

Hydroponics Growing System Setup Guide



Remarks: Only the machine is included, not the water storage tank.

Thank you for purchasing this zone product. We've created these easy-to-follow instructions to ensure you spend your time enjoying the product instead of putting it together. But, if you need more information than what is provided here, please visit zoneveledighting.com, search the item number and refer to the Guides & Documents tab on the product's page.

TROUBLESHOOTING

PROBLEM	POSSIBLE CAUSE	CORRECTIVE ACTION
1. System does not turn on.	1. The power is not connected. 2. Did not press power button (⏻).	1. Check the power connection. 2. Press power first, then press mode.
1. Fertilizer issues	1. Will not fertilize.	1. Find the Installation Overview, Step 4 on the manual.
1. Seeds	1. Not included.	1. Purchase additional seeds.
1. Long Beep sound.	1. No water or not enough water in water tank.	1. Add water & nutrient in water tank.
1. WIFI issues	1. Weak WiFi signal. 2. Not 2.4GHz WIFI.	1. Near to wifi router or connect to mobile phone hotspot. 2. Double check wifi name and password is correct and make sure your wifi is 2.4GHz.
1. No storage tank	1. Not included.	1. Buy additional storage tanks.

CARE AND MAINTENANCE

Using a soft cloth, clean the fixture using a mild, non-abrasive glass cleaner. DO NOT use solvents. DO NOT use cleaners containing abrasive agents. NEVER spray liquid cleaner directly onto the light or LED.

WARRANTY

This product is guaranteed against failure due to factory defects in materials or workmanship for one (1) years from the date of purchase. This warranty is non-transferable and applies only to the original owner. Proof of purchase is required for repair or replacement. This warranty does not cover normal wear of parts or damage resulting from any misuse of the product. Misuse of the product includes, but is not limited to: washing the product, using in extreme weather conditions, opening the product, or trying to remodel the product. Important: this warranty is only valid if the product has been purchased through an authorized reseller.

SAFETY INFORMATION

Please read and understand this entire manual before attempting to assemble, operate or install the product.
Lee y comprenda completamente este manual antes de intentar ensamblar, usar o instalar el producto.

WARNING: DO NOT look directly at LED light sources.

WARNING: Do not overfeed the plants with solid fertilizers. Do not freeze. Do not expose to light.

WARNING: Keep solid fertilizers out of the reach of children to avoid accidental ingestion.

PREPARATION

Before beginning assembly of product, make sure all parts are present. Compare parts with package contents list and hardware contents list. If any part is missing or damaged, do not attempt to assemble the product.

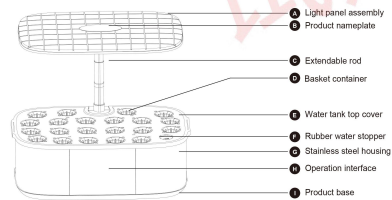
SAFETY INFORMATION

WARNING

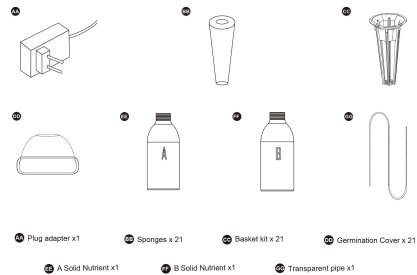
- Suitable for indoor use only.
- Do not look directly at LED light sources.
- The LED modules used in this fixture are not serviceable.
- The product is hazardous prior to shipping. Do not use if product is cracked, broken or missing parts.
- Suitable for use in operating environments ranging between 41°F to 104°F (5°C to 40°C). Lifetime of this product may be reduced with prolonged exposure to extreme temperatures.
- Do not anchor cord with staples, nails, or similar objects to avoid puncture and damage to the cord.
- Do not cover this product as the covering may cause the lights to overheat or ignite.
- Do not use if there is any damage to the light or cord insulation. Inspect periodically.
- Do not install the lighting near flammable liquids.
- Do not install on the ground.

QUICK REFERENCE GUIDE

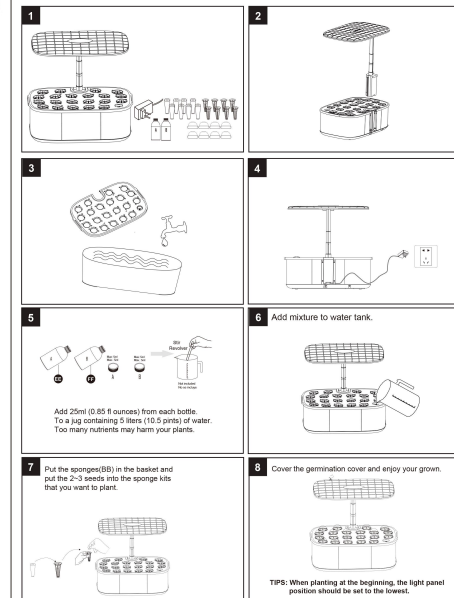
PACKAGE CONTENTS



HARDWARE CONTENTS



NORMAL MODE OPERATION STEPS



QUICK REFERENCE GUIDE

QUICK REFERENCE GUIDE

AUTOMATIC MODE OPERATION STEPS

1. Assemble the device.
2. Connect the power cord to the device.
3. Fill each bottle with 100ML of pure water. Shake well.
4. Rotate to open the cover. Pour the diluted liquid solution into the plant food storage tank in equal proportions. (For example: A 50ML and B 50ML. Pour them separately into the tank.)
5. Connect the pipe to device and water storage tank. Tip: Please ensure that the water in the container is sufficient. To prevent the growth of algae and the risk of damage to machine parts.
6. Short press is the switch between the working mode of the circulating pump and the quiet mode. Press and hold for 3 seconds to turn on Automatic water filling function, add water from the water storage tank into the machine water tank up to the MAX position, then automatically shut down. Then will filling the plant food automatic for growing.
7. Put the sponges(BB) in the basket and put the 2-3 seeds into the sponge kits that you want to plant.
8. Cover the germination cover and enjoy your grown. TIPS: When planting at the beginning, the light panel position should be set to the lowest.

TIPS: When planting at the beginning, the light panel position should be set to the lowest.

QUICK REFERENCE GUIDE

OPERATION INTERFACE INTRODUCTION

- Power button
- Short press is the light switch button for planting mode (vegetable, flower and fruit mode); long press for 3 seconds is the brightness adjustment mode of the plant light. The plant light has 9 brightness levels and can be increased or decreased by the up and down arrow button.
- Short press is the switch between the working mode of the circulating pump and the quiet mode. Press and hold for 3 seconds to turn on Automatic water filling function, add water from the water storage tank into the machine water tank up to the MAX position, then automatically shut down.
- In normal mode, switch the temperature display to Fahrenheit mode. In system parameter setting mode, it is a downward adjustment function.
- Short press to enter the system parameter setting mode, it will cycle in the time, planting days, automatic light on and off time. Long press for 3 seconds to enter the WIFI discoverable mode, search for nearby mobile phones that can be linked, etc.
- In normal mode, switch the temperature display to Celsius mode. In system parameter setting mode, it is an upward adjustment function.
- Network WIFI logo
- Display the current time. When it is connected to the Internet, the time will be synchronized with the mobile phone time; When it is not connected to the Internet, it can be set through the system parameters.
- Display the number of planting days. In normal working condition, it will increase by 1 day every 24 hours. If data is lost due to external reasons, it can be set through system parameters.
- The current ambient temperature of the machine location
- The storage capacity mark in the nutrient solution storage box in the machine, fasting means tank
- The current plant light mode of the machine
- The current working mode of the circulating water pump of the machine
- The water level indicator of the machine's water tank, which is divided into three levels: low, medium and high; When the machine automatically adds water, it will dynamically display the water-adding progress.
- Display the current brightness of the plant light, which is divided into 8 levels of brightness.
- The time for the plant light to automatically turn on every day, the default is 7:00. It can be set through system parameters and humanized settings.
- The time for the plant light to automatically turn off every day, the default is 23:00. It can be set through system parameters and humanized settings. When the machine is in the sleep mode of the plant light, this character will flash as a prompt to toggle the key to work, the plant light will flash once, and then return to the normal light-off state.

QUICK REFERENCE GUIDE

APP/WI-FI OPERATION

- How to find and install Smart Life app
 - You can scan the QR code or APP STORE for installing "Smart Life" APP to mobile device.
 - Long press "Pump" button for 3 seconds, the device will make a long sound and come to scan mode for network, the indicator line will flash for 3 mins. (See Step 11 (2.13))
 - Open the "Smart Life" app and follow the guidelines to setup the network.

APP/WI-FI OPERATION

- Long press "SETUP" button for 3 seconds, the device will make a long sound and come to "scan mode" for network, the indicator line will flash for 3 mins.

APP/WI-FI OPERATION

- Open the "Smart Life" app and follow the guidelines to setup the network manually. Choose "Smart Home Appliances" and then choose the "Plant Grover (WIFI)".

QUICK REFERENCE GUIDE

APP/WI-FI OPERATION

- Open the Smart Life app and follow the guidelines to setup the network automatically.

APP/WI-FI OPERATION

- Function introduction

- Smart garden's name
- Smart garden's photo
- Missing nutrition indicator: icons will flash when needed to refill.
- Current temperature of device
- ON/OFF switch
- Total grow days (recorded automatically)
- Plant mode switch button, both are 16h on/8h off (Refer to Manual Operation 9)
- Brightness adjustable
- Pump mode switch button: Operating:30 min on/30 min off (Do not disturb) 7h off (Please refer to section 9)
- Automatic replenishment mode/Close automatic functions
- Light start time (Set up by user and will Light finish time) (see different lighting cycle)
- Cycle ON/OFF time for lighting, Automatically calculated according to the setting time