

Indoor LED Hydroponic System User Manual

Indoor LED Hydroponic Growing System with 3 LED light modes, let your plants grow soil free in the water and nutrient all around the year from the comfort of indoors!

User Warning

1. Please be careful when plugging in your unit into an electrical outlet. Children should not mess with the plug unless supervised and accompanied by an adult.
2. Do not attempt to unplug the unit if your hands are not dry.
3. The operation of the unit requires the presence of 2.5L water and 24V DC power supply (to the product), make sure no electric part is directly exposed to water. If any water is spilled or scattered over any electric part, thoroughly dry all cables and any electricity-related parts before attempting to reassemble.

Maintenance Information

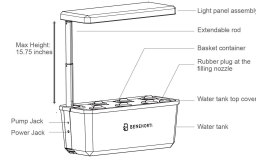
1. You will hear a long "beep" when the power is on. It indicates the unit is powered and has performed a self-inspection. Please make sure there is enough water in the tank before connected to power.
2. As your garden grows, the water in the reservoir will be depleted at gradually faster rates. When the water has run out a buzzer inside the machine will sound a long beep to notify you. At this time, please fill a proper amount of water and nutrient solution into the water tank (Add 5ml A, 6 5ml B nutrient solution for every 1L of water). Once the water has reached its fill level, the beeping will stop.
3. It is recommended that you clean your water pump monthly.
4. Obsessively changing the light mode frequently can cause damage to these or any LED light!
5. The max height of the lamp tube is 15.75 inches, when considering what will go into your garden consider what height the plant will grow to.

Packaged Supplies

- 6 x Organic Grow Sponges
- 1 x AC Adapter
- 6 x Medium/Lids for Grow Medium Baskets
- 6 x Grow Medium Baskets
- 1 x User Manual & Warranty Card
- 1 x Hydroponic Garden with LED Light Hood
- 2 x Nutrient Concentrates (A & B Solid Nutrient Particles)

01

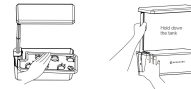
Parts of the planting machine



Notice: Please ensure that the plants you plan on growing can fit within the light hood height of 15.75!

Assembly Instructions

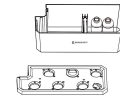
1. Open the box and remove the contents. To install the light hood, remove the growing tray and push the rod to insert. As shown in the figure below, pull the light hood upwards to extend it while using your other hand to hold the water basin.



step 1: take out the cover of tank;
step 2: hold the water tank and push up the holder part.

02

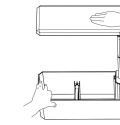
2. Remove the remaining contents from the water tank.



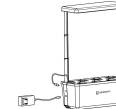
3. It is recommended that you hand wash the water tank with soap and water before plugging the system in.



4. After cleaning, you can reinstall the light hood.



5. Following the diagram below, plug the AC adapter into the unit as well as attach the light hood power supply.



03

Planting Instructions

1. Amongst the remaining items you should find two bottles labeled "Nutrient A" and "Nutrient B". Using distilled or purified water fill both of the bottles, measure the lids and shake the bottles to mix the solid nutrients in with the water.



The cap on these bottles measure in increments of 5ml, the ratio of nutrient to water is 5ml of both nutrient "A" and "B" to 1L of water. Make sure that you stir the nutrients into the water to combine them!



Note:
The system has a shelf life of two years if they haven't been opened and are stored in ambient temperatures.

2. The Treecan Hydroponic system holds 2.5 L of water, do not fill the system beyond that! For best growing results check your water level frequently and top it off.



Please add water under 2.5L.

04

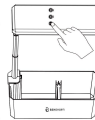
3. It is recommended that you soak your grow sponges in water for up to an hour before placing seeds in them. After soaking place 2-3 seeds in each into the provided grow sponges. These grow sponges can then be placed into the grow medium baskets which in turn can be inserted into the hydroponic system.



Button Interactions

- Normal Mode:** This button will run the system in Normal Mode. In Veg mode the water pump will start one minute after the unit is turned on whereas it will run for 30 minutes on and 30 minutes off.
- Normal Mode:** The LED will run on a 14-hour on and 10-hour off cycle from whenever you start your garden.

- Enjoy Mode:** This button will run the system in Enjoy Mode, pressing it will render an audible beep to confirm your selection has been confirmed. The LED light cycle will change for 12 hours on and 12 hours off.



- Grow Mode:** This button will run the system in Grow Mode, pressing it will render an audible beep to confirm your selection has been confirmed. The LED light cycle will run for 16 hours on and 8 hours off. You can also hold and press this button for five seconds to silence the water pump from running for twelve hours.

05

LED Light Mode Switching

1. The system has an internal clock that will start when the system is powered on. As stated earlier, when the system is started that is when any given light cycle will commence. At initial power-on the system will default to veg mode. If you use one of the buttons to change the mode while the system is on the internal clock will adjust to the new setting by adding or subtracting operating hours.
2. In veg mode you can press the button and hold it for three seconds to set the light to turn off for ten hours. After ten hours the lights will turn back on and resume the cycle and proceed to turn off the light at the same time you pressed the button the night before.

Specifications



Input: 24 V rms 0.65 A
Rated Voltage: 24 V
Rated Power: 15 W
Noise: <40 dB
Temperature: 59°F- 86°F
Timing: 14h-on-and-10h-off-cycle
12h-on-and-12h-off-cycle
16h-on-and-8h-off-cycle
Colour: White/Black
Size: 13.2* 9.3 in
Weight: 2.75 lbs

06

The process of how to plant the Basil, Mint, Tomato, Pepper, Dill, Parsley, Coriander, Rosemary

	LED Light Distance from Plants	Temperature	Nutrient Solution
Germination stage	2-4 inches		
Growth stage/harvest	6-9 inches	59°F- 86°F	1L water + 5ml A and 6ml B nutrient solution
Ornamental stage	5-8 inches		

Notes:

- It is advised that you clean the water pump once a month. Remove the water pump and pull off the back cover, rinse it out and reinsert.
- Add 5ml of Nutrient "A" and "B" for each liter of water.
- By default, the water pump runs for 30 minutes on and 30 minutes off.

07

FAQs

1. How do I clean the water pump?
 - a. Power off the system.
 - b. Remove the light hood and grow medium tray to access the inside of the reservoir.
 - c. Take out the sponge in front of the water pump and rinse it with water, do not use any tools as this can affect the nutrient balance!
 - d. Install the sponge back in front of the water pump and reassemble the system.
2. Why is my water pump making noise?
 - a. Noise coming from the water pump indicates some type of blockage. Turn off your unit and attempt to clean the water pump.
3. Can grow sponges be reused?
 - a. Grow sponges can technically be reused, but it is not advised. As they are composed of organic material the grow sponges tend to break down after the plant has started growing.
4. Is it possible to transplant a plant from a hydroponic system to soil?
 - a. Yes, it is possible with caution. Plants from hydroponic systems are used to constant indoor temperatures, to transfer outside you will need to transfer the grow medium sponge into soil and allow it rest in indirect sunlight for a few days before taking it outside.

08