

Smart Garden Setup Guide



SPECIFICATION

Power Input: AC 110-240V Rated Power: 36W
Power Output: DC 24V Size: 15.83 x 7.24 x 9.84 inches

INCLUDED IN PACKAGE



Notice: Please choose suitable seeds which can grow under the light panel (19.5 inches high)



1. Plug adaptor
2. Sponges x 12
3. Container Kit x 12
4. A Solid Nutrient
5. B Solid Nutrient

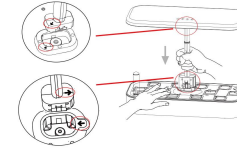
EASY SET UP

To Get Your Smart Garden Up and Growing

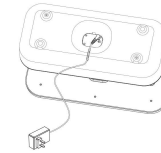
1. Take the machine out of the box. Remove the water tank cover and take the components out.



2. As shown in the picture below, pull out the extendable rod. (Note: lift the extendable rod with one hand while holding the water tank down.)



3. Before adding water to the tank, please connect the power adaptor to the DC jack.



4. Put the water and plant food into the tank, then install the water indicator and cover.



HOW TO RAISE AND LOWER THE LED LIGHTS



Push up to raise hood



Push down to lower light hood

TIPS: When planting new seeds, please set the light hood to the lowest possible position.

PLANTING YOUR SMART GARDEN

Step 1. Make Plant Food Solution (2 Methods)

<p>1 Fill the bottle of plant food A and plant food B with water. Keep shaking both bottles until the plant food have completely dissolved. Each 5ml of mixed plant food solution A and B should be combined with 1 Litre water.</p>	<p>2 Use the cap of the plant food as a measure, pour a cap of plant food A into a jug and dissolve with 5ml of water. Then add the mixed plant food solution into 1 Litre of water and stir until completely dissolved. Repeat the step with plant food B.</p>
---	--

(NOTE: the unopened plant food can be stored for 2 years in a cool dry place. If you used plant method 1 to make plant solution, the dissolved plant food can be preserved for 5 months.)

Step 2. Add Water into the Water Tank

Remove the rubber seal at the bottom right of the water tank lid and pour the mixed plant food solution into the water tank.

(NOTE: Do not exceed the MAX line under the rubber seal.)

Step 3.

Insert the plant pods into the plant containers, put your seeds into the plant pods and then place into the planting port of the water tank lid.



(NOTE: For better results please soak the seeds for 1 hour before putting into the plant pods. Make sure the plant is placed inside the plant pod not on the surface of the pod.)

Step 4. Plug in

Plug power cord in and turn on.

CONTROL PANEL SETTINGS

	After you plug in your Smart Garden, there will be a long beep sound and the power will flash slowly. Press the Power button and all the LED lights will turn on and the machine will enter the vegetable growing mode automatically.
	When you press the vegetable button, the red, blue and white LED lights will turn on and the indicator of this button will stay on throughout the duration. The automatic timer works on a 24-hour cycle. When choosing the vegetable mode, the Smart Garden will stay on for 16 hours, entering sleep mode for 8 hours and continue this cycle the next day.
	When you press the flower button, the red and white LED lights will turn on and the indicator of this button will stay on throughout the duration. When you choose the flower mode, the Smart Garden will stay on for 16 hours, entering sleep mode for 8 hours and continue this cycle the next day.
	After pressing the power button, the pump button indicator will be on at the same time. The pump will automatically enter the working cycle of 30 minutes on and 30 minutes off. If you press the pump button once, the indicator will flash and immediately enter a 12-hour sleeping mode. After the sleeping mode is complete, the pump will enter the working cycle of 30 minutes on and 30 minutes off again.

Note:

1. When the power adaptor connects to the power, the system will make a long beep sound, indicating that the system has powered on normally and self-check is complete.
2. After several days of using your Smart Garden, the water level in the tank will decrease. When the water levels do not meet the requirements of your plants, the float of the water-level mark will point to "Min", this means you need to add the right amount of water.
3. This Smart Garden is equipped with an indicator. When it is set to a specific mode the button indicator will stay on. When entering sleeping mode, the button indicator will flash.

ATTENTION:

<p>1 Please clean the water pump at least once a month. (Take off the water tank lid, remove cotton, then wash)</p>	<p>2 When you want to remove water from the tank, please pull out the rubber plug under the bottom of the tank. Please remember to put the rubber plug back after the water is drained.</p>
--	--

FAQ

1. Why do only a few of the plants grow and once grown, they quickly wither?
 - a. The seeds used make a difference. For best results, purchase high quality seeds and avoid purchasing seeds that are not suitable for your Smart Garden.
 - b. Ensure you are using the correct amount of nutrient solution to water.
 - c. Check the LED light distance from the plants and check the temperature is appropriate for your plants (check user manual).
2. Can sponges be reused?

We do not recommend doing so as the sponge will not be as effective after first use.
3. Does it kill the plant to remove the sponge (transplant)?

Normally, it would not. However, we recommend waiting until the plant is vigorous to improve survival rates.
4. Why is the LED light not turning on?

Push or reinsert the rod down into the bottom until you hear a "beep" sound and then press the power button.
5. How to clean the water pump?
 - Step 1. Turn the power off.
 - Step 2. Remove the extendable rod and the top cover of the water tank.
 - Step 3. Take out the sponges in front of the water pump and rinse it with water. Any washing liquid will harm the nutrition balance. (If very dirty, please rinse the water pump together).
 - Step 4. Put together and reassemble the machine.