

L'IL BOOGER BUSTER QUICK START GUIDE



How to Bust the Booger



0 - 6 Months



6+ Months



- **Make sure the nozzle is clean and the waste tank empty.**

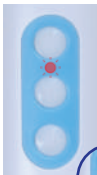
- **Choose a suitable nozzle.**

- Press the power button to switch the L'il Booger Buster on. The LED indicator lights **Green** to indicate low power setting.

- To increase the suction power level, press the "Suction Level" button and the L'il Booger Buster will change to High Power and the LED indicator light will change to **Blue**. Press the power button again and the power returns to the Low power setting, the indicator LED will Change to **Green**.

- Press the LED button to cycle through the different LED light colours. Press LED button again to stop cycling through the LED lights.

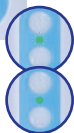
Charging L'il Booger Buster



- When the L'il Booger Buster Nasal Aspirator power is low, the LED indicator light will flash **RED** twice and then the unit will switch off.

- Please plug the supplied USB cable into the charging port and use a 5V power adapter (1A recommended).

- While the L'il Booger Buster is charging, the LED indicator light flashes **Green** and no other function will be operational.



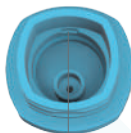
Cleaning L'il Booger Buster

- When using the Medscan L'il Booger, please make sure the waste tank does not overflow.

- Once the waste tank is filled, please remove the nozzle and the tank from the main unit and clean thoroughly. Wipe the main unit with a dry cloth.

- The nozzles and the tank may be washed with warm water and mild detergent. These parts are also dishwasher safe.

Installing the tank



- Align the alignment socket with alignment tab and press down firmly until the tank is securely fastened and securely sitting in place.



1300 736 330

www.medscan.com.au

Visit our YouTube channel for our latest easy to follow instructional videos. Simply search for Medscan on YouTube and subscribe to our channel for the latest products and instruction videos.

You can also scan the QR code for instant access.