



Canada Office

25 Sheppard Ave W, Suite 300  
Toronto, ON M2N 6S6 Canada

Tel: +1 (416) 907 7395

Korea Office

22 Gyeongsu-daero 1140beon-gil, Manan-gu,  
Anyang-si, Gyeonggi-do, 13914, Republic of Korea

Tel: +82 10 2717 8462 Email: [info@fitterest.us](mailto:info@fitterest.us)



Follow us

[f](#) [@](#) [@fitterestofficial](#)



## The technology for "FIT TO LIFESTYLE"

Comfortable walking shoes mean healthy feet and freedom to explore.  
This ultimately makes our lifestyle and that of everyone around us richer and more passionate.

WOMEN  
FTR23WSSWH202







MEN FTR23MSSNV104  
WOMEN FTR23WSSWFR02







WOMEN  
FTR23WSSGR208





MEN FTR23MSSN104  
WOMEN FTR23WSSGR208/FTR23WSSWH202





# **Fitterest**

Over 30 years manufacturing experience of global shoes brands

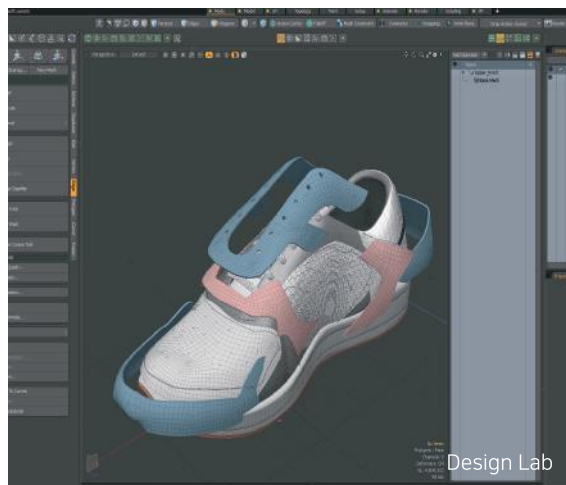
The 30 years of time and experience invested in becoming an expert in our field is one of our brand's greatest assets.

As the world's leading shoe manufacturer, FITTEREST has a wealth of experience, skill and talent in shoe craftsmanship.

By combining and optimizing these best experiences and technologies, the long-standing aspiration and desire to develop and present the highest quality shoe products that fit the spirit of "Fit to Lifestyle" led to the birth of the FITTEREST brand.

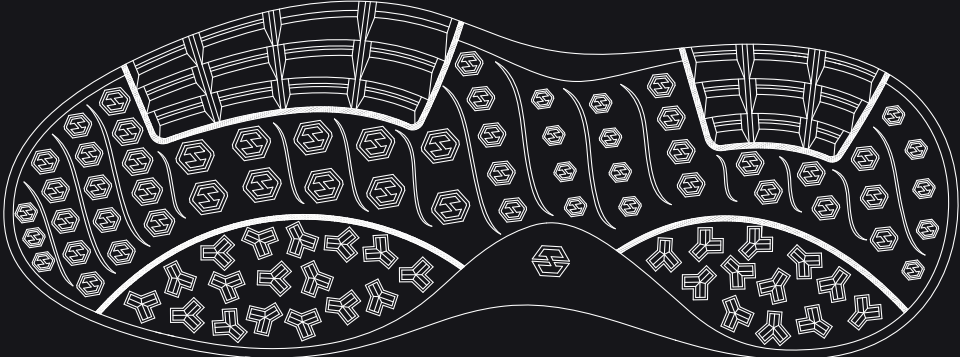


FITTEREST operates three LABs to develop the most comfortable shoes for our feet that best suit our lifestyle.

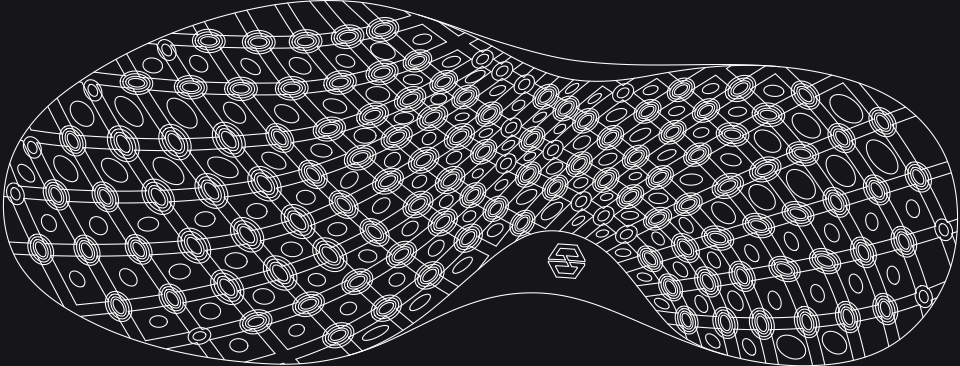


# TECHNOLOGY MATTERS

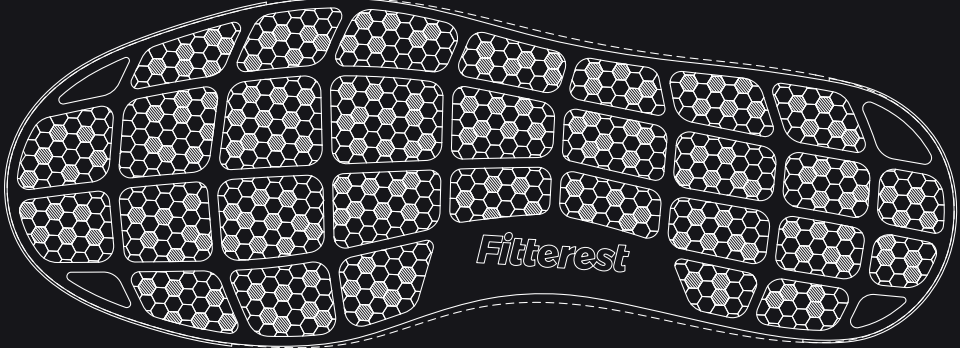
The outsole technology is the key for the golf performance and comfortable walk



MANTIS-CLOUD



SPIDER-WAVE



HONEYCOMB-GROUND

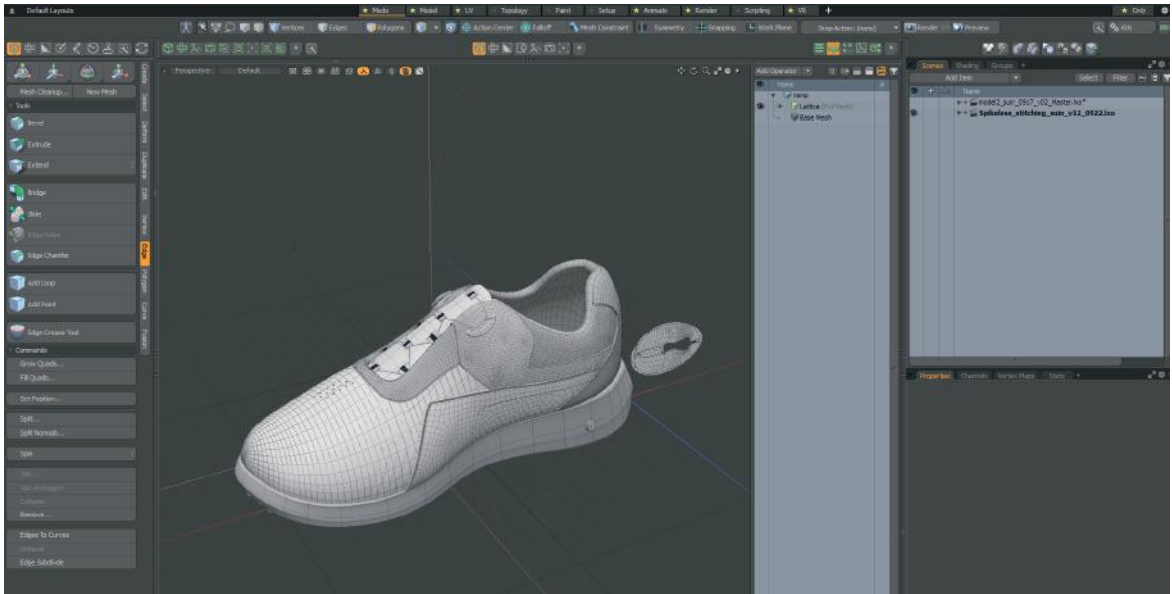


# ECO-FRIENDLY MATTERS

It uses natural scrap cowhide as the main raw material to recycle waste resources and certifies that the entire process of collection, production and distribution of raw materials is managed in accordance with the 'Global Recycled Standard'.

From day one, we've always sought to replace petroleum-based synthetic materials with natural alternatives whenever we can. When we haven't found suitable alternatives, derived from the world's first carbon negative green EVA—, we use in the first place to create lighter products, so we're working to redesign packaging and eliminate manufacturing waste.





# 3D DESIGN WORKS

We constantly research the designs that best suit the lifestyles and sports of international customers. Now we dramatically upgraded our capabilities and speed of shoe design with 3D design technologies.





WOMEN  
FTR23WSSWH202



# THE ULTIMATE SHOE TECHNOLOGY MANTIS-CLOUD

It has a bump that prevents sway, and has the strongest grip among the series, and is a slightly thicker outsole. In particular, the air cushion function provides excellent traction, and the high cushioning provides a comfortable and refreshing fit. The bottom of the shoe has the transparent printing of the fittestest brand logo.



### Air Releasing

Through different protrusions, SWAY prevention and air circulation during rounding make the inside of the foot comfortable due to the device.



### Air-on midsole-EPR material

You can experience the stability when swinging.



# THE ULTIMATE SHOE TECHNOLOGY SPIDER WAVE

The circular protrusions on the outsole spread out like a wave of spider web to improve grip while allowing for easy movement. It can be worn in any situation, including daily sporting and leisure activities and on the golf course, as easily and comfortably as regular sneakers.

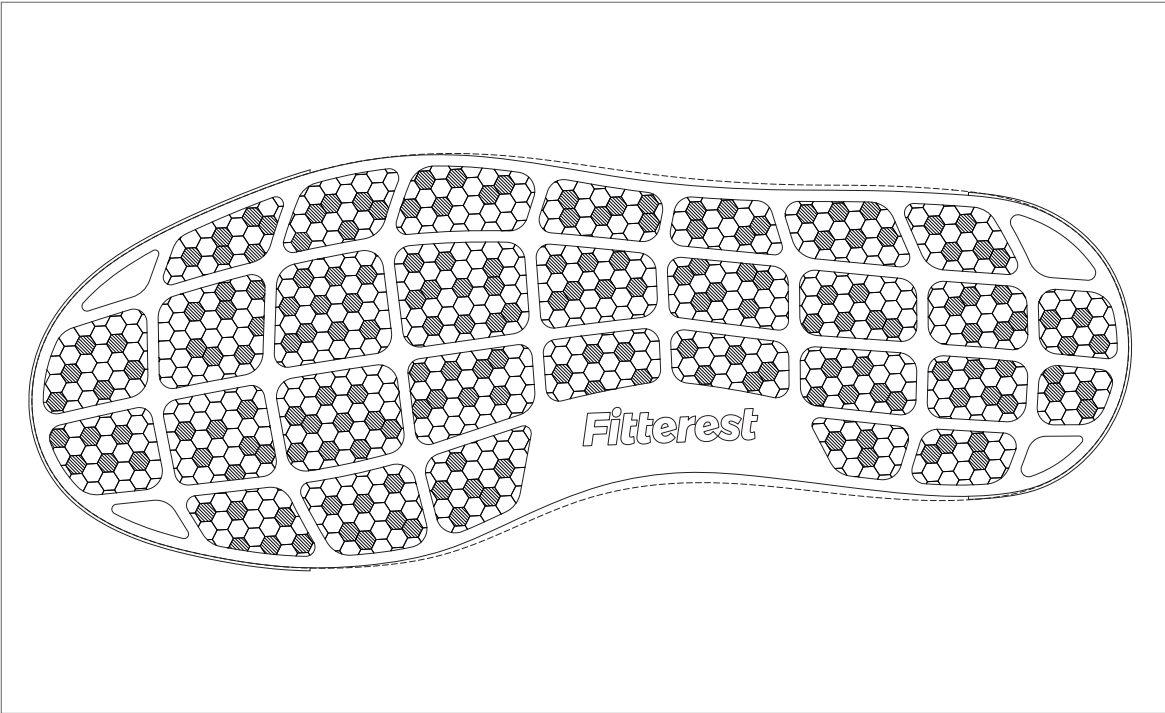


**Ergonomically designed outsole**

Excellent grip provides a stable swing

# THE ULTIMATE SHOE TECHNOLOGY HONEYCOMB GROUND

Bottom studs with hexagonal, angled honeycomb shapes provide consistent anti-slip traction in any direction.



**COMING SOON,  
2024 COLLECTION**



# THE ECO-FRIENDLY MATTERS SHOE SNEAKERS

Our daily life becomes more enjoyable when our footsteps are comfortable and light. This comfort eventually changes not only our life but also the people around us, making the life of all of us passionate.



**Eco-friendly Product**  
Using recycled leather



**Light and comfortable**  
Easy to walk.

MEN FTR23MSSNV104  
WOMEN FTR23WSSGR208/FTR23WSSWH202





PRODUCTION LINEUP  
**SPIDER WAVE**



**[Unisex] Multi**  
Size: 7.5~12.5(US) for men  
6~8.5(US) for women



**[Unisex] White**  
Size: 7.5~12.5(US) for men  
6~8.5(US) for women



**[Women] Sky Blue/Pink**  
Size: 6~8.5(US)



**[Women] Black/White**  
Size: 6~8.5(US)



**[Women] Black**  
Size: 6~8.5(US)



**[Women] White**  
Size: 6~8.5(US)



**[Women] Yellow**  
Size: 6~8.5(US)



**[Women] Pink**  
Size: 6~8(US)



**[Women] Silver**  
Size: 6~8(US)





[Women] Sky Blue  
Size: 6~8.5(US)



[Women] Pink  
Size: 6~8.5(US)



[Women] White/Green  
Size: 6~8.5(US)



[Men] Jamaica  
Size: 7~12.5(US)



[Men] Navy/Sky Blue  
Size: 7~12.5(US)



[Men] White/Green  
Size: 7~12.5(US)



[Men] White/Blue  
Size: 7~12.5(US)



[Men] Black  
Size: 7~12.5(US)



[Men] Navy  
Size: 7~12.5(US)



[Men] Silver  
Size: 7~12.5(US)

# PRODUCTION LINEUP MANTIS-CLOUD



[Women] Dial Type - White/Silver  
Size: 6~8.5 (US)



[Women] Lace Type - White/Navy  
Size: 6~8.5(US)



[Men] Dial Type - Black/Red  
Size: 7.5~12.5(US)



[Men] Dial Type - White/Navy  
Size: 7.5~12.5(US)



[Men] Lace Type - White/Silver  
Size: 7.5~12.5(US)

# SNEAKERS



[Unisex] Black  
Size: 7~9.5(US) for men  
6~8(US) for women



[Unisex] White  
Size: 7~9.5(US) for men  
6~8(US) for women

# SHOE ACCESSORIES OTHER

GOLF CAP | Color: Black,White,Green



GOLF GLOVES | Color: Black/White, Blue/Yellow, Green, Beige  
Blue/Pink, White









WOMEN  
FTR23WSSWH202

