



Fitterest

Email: info@fitterest.us



Follow us
f @ fitterestofficial





Fitterest

Over 30 years manufacturing experience of global shoes brands

The 30 years of time and experience invested in becoming an expert in our field is one of our brand's greatest assets.

As the world's leading shoe manufacturer, FITTEREST has a wealth of experience, skill and talent in shoe craftsmanship.

By combining and optimizing these best experiences and technologies, the long-standing aspiration and desire to develop and present the highest quality shoe products that fit the spirit of "New sports casual, Enjoy new!" led to the birth of the FITTEREST brand.

FITTEREST operates three LABs to develop the most comfortable shoes for our feet that best suit our lifestyle.

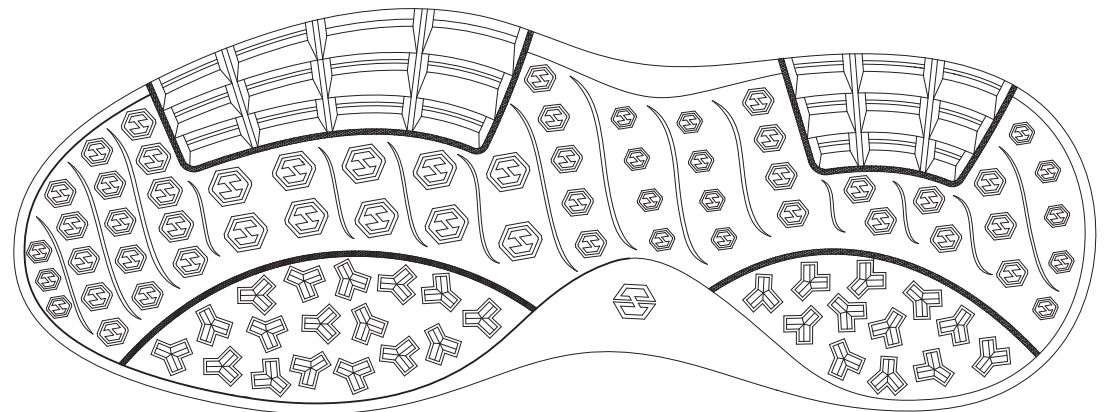
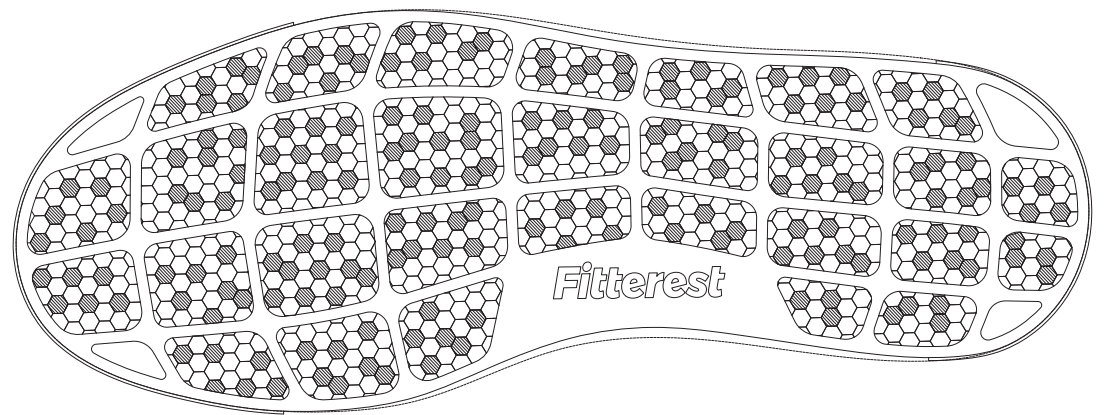
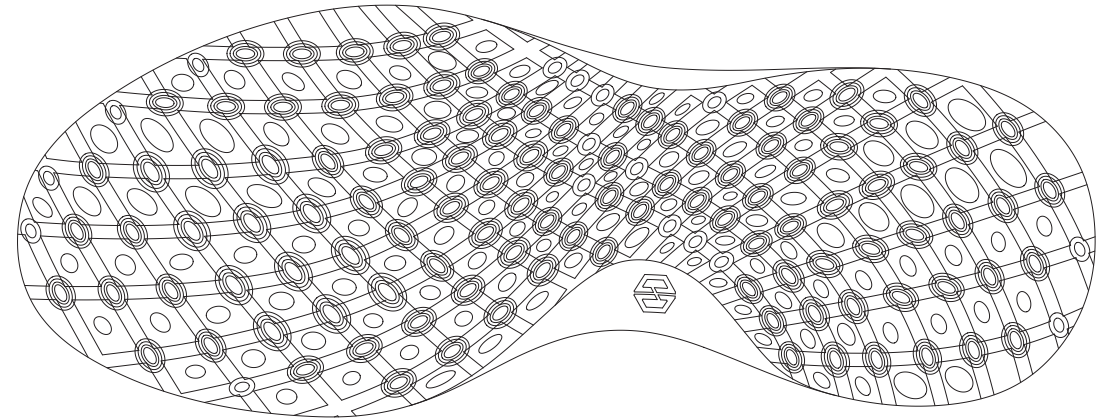


3D DESIGN WORKS

We constantly research the designs that best suit the lifestyles and sports. Now we dramatically upgrad our capabilities and speed of shoe design with 3D design technologies.

TECHNOLOGY MATTERS

The outsole technology is the key for the golf performance and comfortable walk



SPIDER WAVE

The circular protrusions on the outsole spread out like a wave of spider web to improve grip while allowing for easy movement. It can be worn in any situation, including daily sporting and leisure activities and on the golf course, as easily and comfortably as regular sneakers.

THE ULTIMATE SHOE TECHNOLOGY 01



Ergonomically designed outsole
Excellent grip provides a stable swing



Style Comfort Functionality

Embrace a multiverse lifestyle where comfort, style, and functionality coexist.



HONEYCOMB GROUND

Honeycomb Ground outsole, features a hexagonal honeycomb shape with more than 400 protrusions in three variations, providing consistent grip in any direction. They are arranged to evenly distribute weight on the field during a swing and also to offer durability and comfort for everyday use, with a design that allows for casual wear.

02



Ergonomically designed outsole
Excellent grip provides a stable swing



Stitching construction method
The application of stitching construction methods in handmade shoes ensures the robustness and durability of the combination of the upper and outsole.

 Fitterest



NEW SPORTS CASUAL, ENJOY NEW!

WE AIM TO BRING TOGETHER SPORTS AND CASUAL CONCEPTS THROUGH DISMANTLING AND REIMAGINING CREATING A CONNECTION WITH THOSE WHO JOIN US



**NEW SPORTS CASUAL,
ENJOY NEW!**

03

MANTIS-CLOUD

It has a bump that prevents sway, and has the strongest grip among the series, and is a slightly thicker outsole. In particular, it provides excellent traction, and the high cushioning provides a comfortable and refreshing fit. The bottom of the shoe has the transparent printing of the fitterest brand logo.



Air Releasing

Through different protrusions, sway prevention and air circulation during playing golf make the inside of the foot comfortable due to the device.



Air-on midsole-EPR material

You can experience the stability when swinging.

MEN FTRNV2201
WOMEN FTRSL2206



WOMEN FTRWH2216



04

SNEAKERS

Our daily life becomes more enjoyable when our footsteps are comfortable and light. This comfort eventually changes not only our life but also the people around us, making the life of all of us passionate.



Eco-friendly Product
Using recycled leather



Light and comfortable
Easy to walk

PRODUCTION LINEUP
SPIDER WAVE



[Women] SB210
 Size: 6~8.5(US)



[Unisex] MT101/MT201
 Size: 7.5~12.5(US) for men
 6~8.5(US) for women



[Unisex] WH102/WH202
 Size: 7.5~12.5(US) for men
 6~8.5(US) for women



[Women] PN203
 Size: 6~8.5(US)



[Women] PN209
 Size: 6~8.5(US)



[Women] GR208
 Size: 6~8.5(US)



[Men] JM103
 Size: 6~8.5(US)



[Women] BN204
 Size: 6~8.5(US)



[Women] BK205
 Size: 6~8.5(US)



[Women] WH206
 Size: 6~8.5(US)



[Men] NV104
 Size: 7~12.5(US)



[Men] GR105
 Size: 7~12.5(US)



[Men] BL106
 Size: 7~12.5(US)



[Women] YL207
 Size: 6~8.5(US)



[Women] PN2207
 Size: 6~8(US)



[Women] PN2208
 Size: 6~8(US)



[Men] BK107
 Size: 7~12.5(US)



[Men] NV2202
 Size: 7~12.5(US)



[Men] SL2203
 Size: 7~12.5(US)

PRODUCTION LINEUP

HONEYCOMB GROUND



[Unisex] M401/W410
Size: 7~13(US) for men
6~10(US) for women



[Unisex] M402/W411
Size: 7~13(US) for men
6~10(US) for women



[Unisex] M403/W412
Size: 7~13(US) for men
6~10(US) for women



[Unisex] M404/W413
Size: 7~13(US) for men
6~10(US) for women



[Women] W407
Size: 6~10(US)



[Women] W408
Size: 6~10(US)



[Women] W409
Size: 6~10(US)



[Men] M405
Size: 7~13(US)



[Men] M406
Size: 7~13(US)

MANTIS-CLOUD



[Women] SL2206
Size: 6~8.5 (US)



[Men] NV2201
Size: 7.5~12.5(US)



[Men] BK100
Size: 7.5~12.5(US)

SNEAKERS



[Unisex] BK2212/BK2217
Size: 7~9.5(US) for men
6~8(US) for women



[Unisex] WH2211/WH2216
Size: 7~9.5(US) for men
6~8(US) for women

Men's Shoe Size

US	UK	Europe	KR/JP (cm)
7.0	6.0	40.0	250
7.5	6.5	40.5	255
8.0	7.0	41.0	260
8.5	7.5	42.0	265
9.0	8.0	42.5	270
9.5	8.5	43.0	275
10.0	9.0	44.0	280
10.5	9.5	44.5	285
11.0	10.0	45.0	290
11.5	10.5	45.5	295
12.0	11.0	46.0	300
12.5	11.5	47.0	305
13.0	12.0	47.5	310

Women's Shoe Size

US	UK	Europe	KR/JP (cm)
6.0	3.5	36.5	230
6.5	4.0	37.0	235
7.0	4.5	37.5	240
7.5	5.0	38.0	245
8.0	5.5	38.5	250
8.5	6.0	39.0	255
9.0	6.5	39.5	260
9.5	7.0	40.0	265
10.0	7.5	40.5	270

Accessories

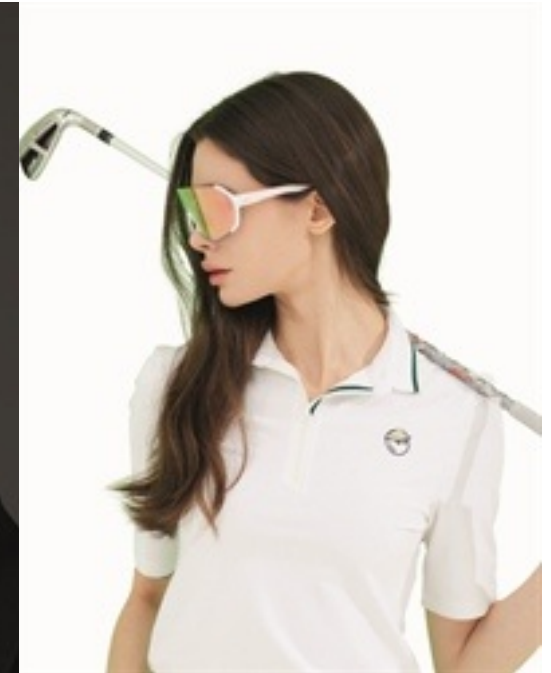
SUNGLASSES



GOLF GLOVES



SOCKS



Fitterest x WTD

