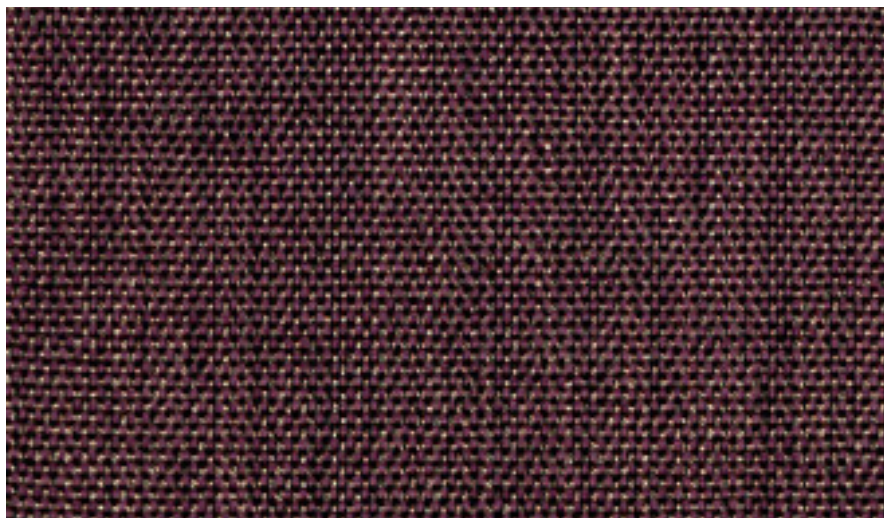


SPECTACULAR™

RePel™ Finish



Color: Eggplant

General Specifications

Composition:	100% Polyester
Backing:	Acrylic
Total Weight:	11.35 oz. / yd.
Width:	54"
Abrasion:	200,000 DR
Finish:	RePel™
Roll Size:	50 Yards
Colorways:	42
Flammability:	
CA117 13	
NFPA-260	
UFAC Class 1	

Available NFPA 701 | Drapery

Indigo



Periwinkle



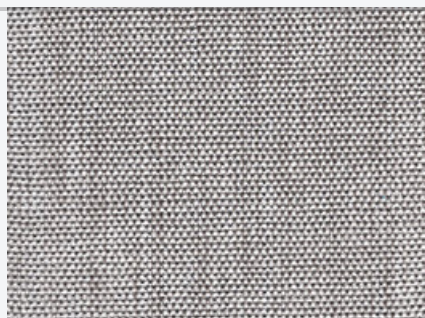
Onyx



Silvercast



Greystone



Silver Linen



SPECTACULAR™

RePel™ Finish

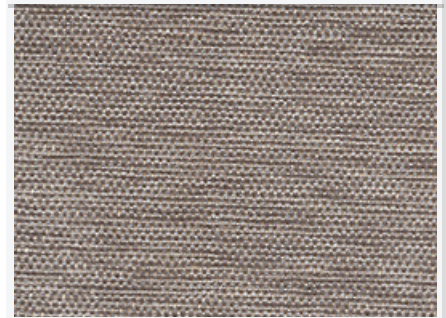
Iron



Aura



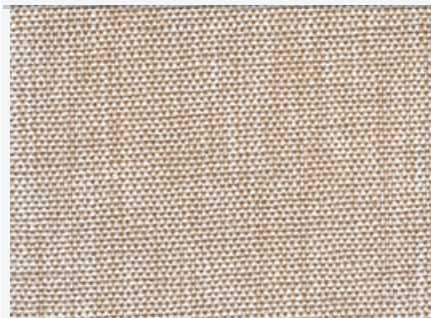
Taupe



Ecru



Vanilla



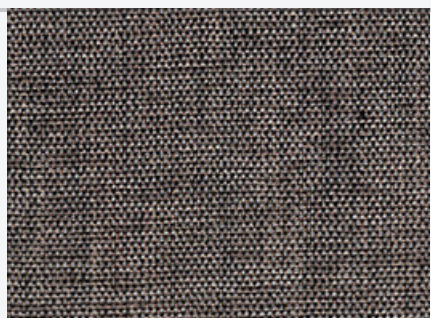
Chalk



Ash



Midnight



Dark Shadow



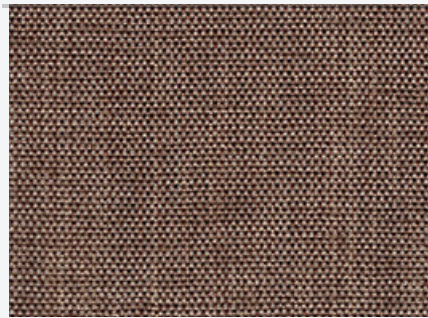
SPECTACULAR™

RePel™ Finish

Latte



Mocha



Element



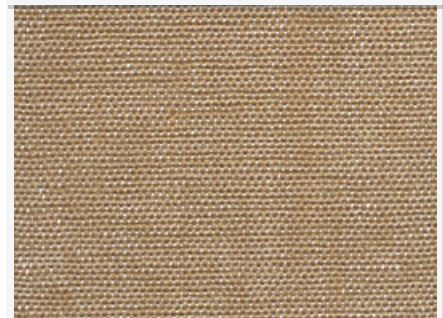
Twine



Tan



Lt. Gold



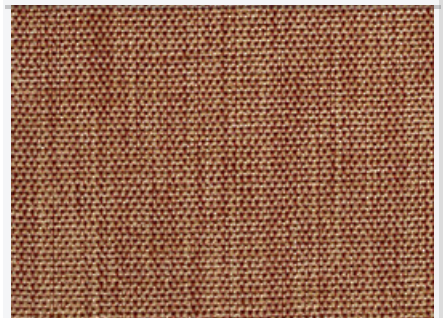
Field



Gilded



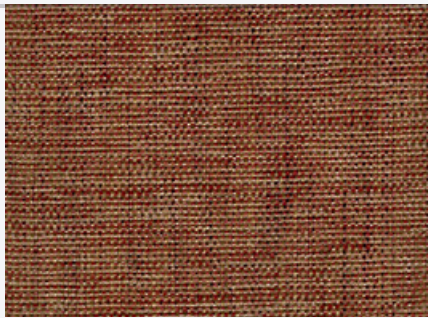
Harvest Moon



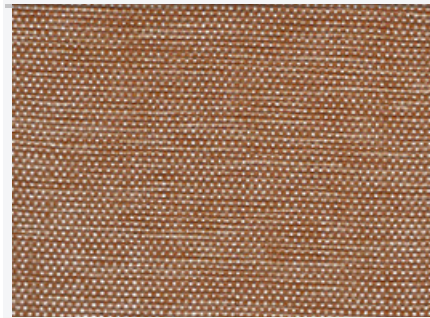
SPECTACULAR™

RePel™ Finish

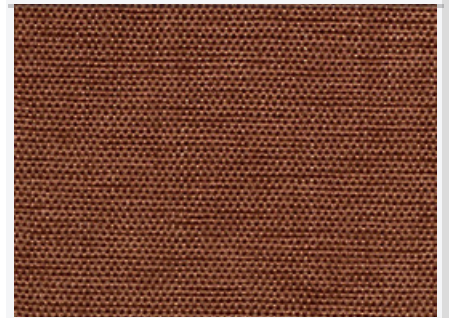
Rusty



Apricot



Copper



Bronze



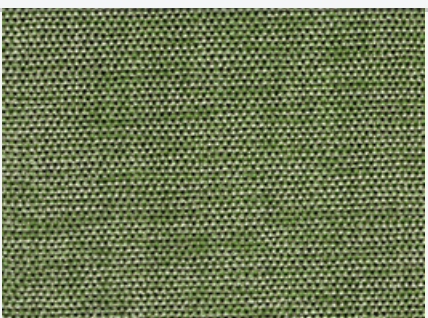
Olive



Celery



Brass



Verdant



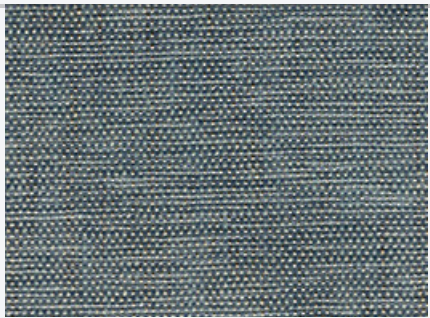
Mint



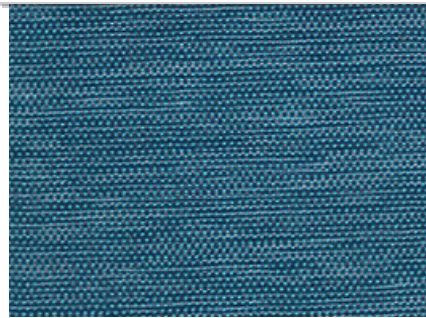
SPECTACULAR™

RePel™ Finish

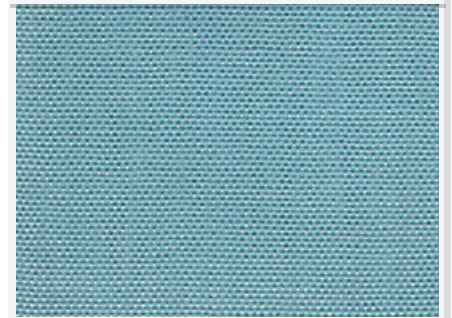
Blush



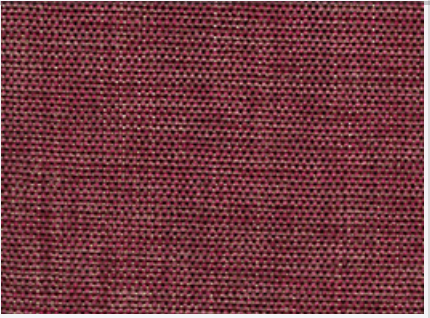
Turquoise



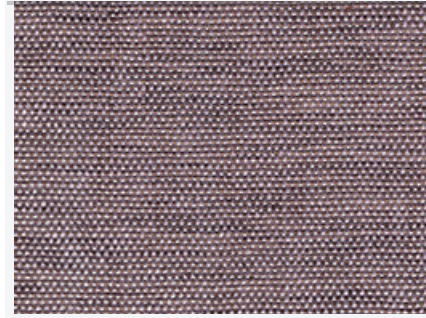
Aqua



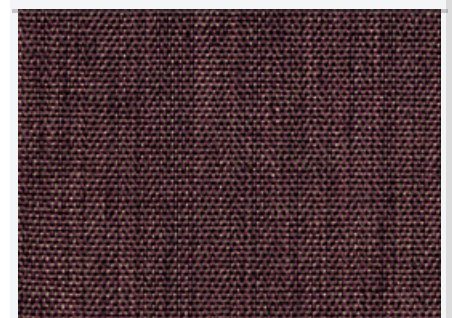
Cranberry



Lilac



Eggplant



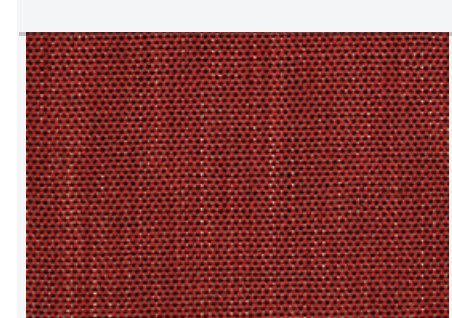
Pumpkin



Sunset



Chili



SPECTACULAR™

RePel™ Finish

Specifications:**General**

Composition:

100% Polyester

Acrylic Backing

Weight:

11.35 oz. / yd.

Width:

54" / 137 Centimeters

Repeat:

NA

Roll Size:

50 Yards

Colors:

42 Colors

Use / Application

Upholstery & Drapery

Performance

Abrasion:

200,000+ DR [Wyzenbeek #10 Cotton Duck]

Finish:

Soil/Stain Resistance: **RePel™**

UV Colorfastness to Light:

60 Hours | Grade 4

Breaking Strength: Warp 350.3 – Fill 385.4

ASTM D751-06

Seam Strength: Warp 70.5 – Fill 71.2

ASTM D751-06

Flammability

F/R Rating:

- CAL-117-2013 Section 1
- NFPA 260
- UFAC Class 1
- **NFPA 701 - Drapery**

Performance

Abrasion:

200,000+ DR [Wyzenbeek #10 Cotton Duck]

UV Colorfastness to Light:

60 Hours | Grade 4

Eco-Friendly:

Spectacular does not pose any exposure risks associated with the chemicals in Prop 65.

- Phthalate Free
- Lead and Heavy Metal Free
- BPA Free, TRIS Free and Formaldehyde Free

Maintenance & Cleaning

Clean with mild soap & water and a lint-free cloth for standard cleaning. Do not use a harsh scrub brush and Do Not use alcohol based cleaners. Rinse after washing with clean clear water and a soft lint-free cloth.

*See gmf website for fabric cleaning & care instructions.