

CONTENDER

RePel™ Finish

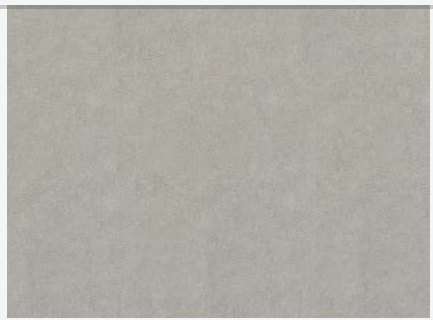


General Specifications

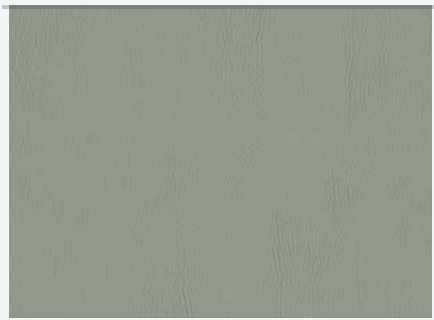
Composition: 100% Vinyl [PVC]
 Backing: 100% Polyester
 Total Weight: 33.00 oz. / yd
 Width: 54"
 Abrasion: **1,500,000 DR**
 Finish: **RePel™**
 Roll Size: 40 Yards
 Colorways: 21
Flammability: Bleach Cleanable
 CA117 13 Antimicrobial
 NFPA-260 Antibacterial
 UFAC Class 1 Mildew Resistant
 IMO FTP 2010 - Sec. 8

Contender Color: Gunmetal

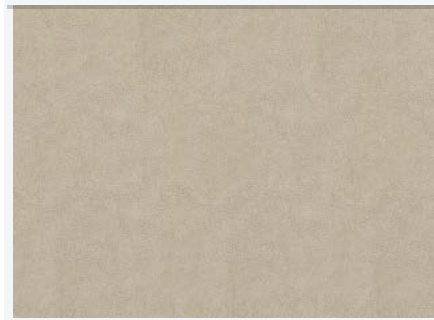
Gray Owl



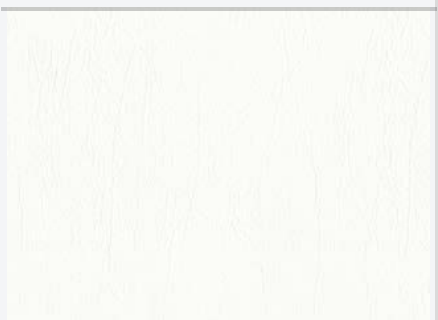
Battleship



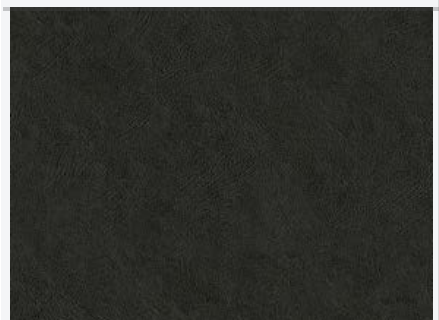
Artic



Vanilla



Gunmetal



Midnight



CONTENDER

RePel™ Finish

Coffee Bean



Mocha



Fudge



Mushroom



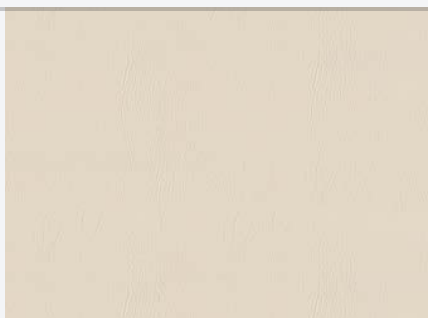
Taupe



Cement



Off-White



Steel



Charcoal



CONTENDER

RePel™ Finish

Icicle



Royal Blue



Lagoon



Avocado



Garnet



Squash



CONTENDER

RePel™ Finish

Contender is Suitable for Indoor & Outdoor Use, 1,500 Hours UV

Specifications

Composition:

100% Vinyl [PVC]

100% Polyester Backing

Weight:

33.0 oz. / PLY

Width:

54" / 123 Centimeters

Repeat:

NA

Roll Size:

40 Yards

Colors:

21 Colors

Performance

Abrasion:

1,500,000+ DR [Wyzenbeek #10 Cotton Duck]

UV Colorfastness to Light:

1,500 Hours | AATCC 16.3 Grade 4.0

Crocking:

Dry = Class 5, Wet = Class 5 AATCC 8-2007

Breaking Strength: ASTM D751-06, Procedure A,

CFAA 17-2013 -

Weft 94 lbs. X Warp 101 lbs.

Soil / Stain Resistance:



RePel performance finish for Healthcare

Flammability

F/R Rating:

- CAL-117-2013 Section 1
- NFPA 260
- UFAC Class 1
- IMO FTP Code 2010 - Sec. 8

Health Performance

- Bleach Cleanable
- Anti-Microbial
- Anti-Bacterial
- Mildew Resistance
- Stain Resistance

Eco-Friendly:

- Phthalate Free
- No FR Additives
- No Harmful Chemicals

Maintenance & Cleaning

Clean with mild soap & water and a lint-free cloth for standard cleaning. Do not use a harsh scrub brush and Do Not use alcohol based cleaners. Rinse after washing with clean clear water and a soft lint-free cloth.

Bleach Cleanable [10 (water) :1 (Bleach)] Ratio

When cleaning with a Ratio of 10:1 Water and Bleach, clean with a soft lint-free cloth. Do not use a harsh scrub brush and rinse after washing with clean clear water and a soft lint-free cloth.



Isopropyl Alcohol and Water Ratio of 1:1

For Cleaning of Ball-point Pen and Sharpe on Fabulous, Method 2, A Ratio of 1:1 water and Isopropyl can be used to clean the affected area.. Use a soft absorbent lint-free cloth for cleaning, rinse with fresh water and dry with a separate soft dry lint-free cloth.

*See gmf website for fabric cleaning & care instructions

Contender when used with proper components may be compatible with CA-133

CONTENDER

RePel™ Finish

Contender is Suitable for Interior & Exterior Use

Contender is engineered for performance with a luxurious look and smooth and supple hand. Contender provides enhanced staining protection with™our RePel™ performance finish and resistance of wear with abrasion of **1,500,000 DR**. Anti-bacterial, anti-mildew, and Bleach Cleanable add to the enhanced performance for properties with high traffic activity. Contender has a **UV rating of 1,500 Hours** making it a superior upholstery for indoor and outdoor usage.

RePel™ ensures most common stains can effectively be cleaned with mild soap and water. For tougher stains, a ratio of 1:10 bleach and water, 1:1 water, and isopropyl alcohol can be used. A comprehensive list of brand cleaners is provided below. It is suggested that any cleaning product and/or method first be tested for effectiveness in an inconspicuous area.

Approved Cleaners by Brand

- | | |
|------------------------|-------------------------------|
| Virox 5 | Accel Five |
| Oxiver Plus | Accel Prevention |
| Oxiver TB | Accel Prevention Wipes |
| Oxiver TB Wipes | Oasis 146 |

For all cleaning methods, clean with a soft absorptive lint-free cloth for cleaning. Rinse with fresh water to remove residue and dry thoroughly with a separate soft dry lint-free cloth.

- Method 1 - Mild soap and water
- Method 2 - Ratio of 1:1 water and isopropyl alcohol.
- Method 3 - Ratio of 1:10 bleach and water or one of the approved cleaners listed



	Bodily Fluids	Coffee	Creamer	Essential Oils	Hot Sauce	Ink	Cosmetics	Lotion	Mustard	Oil Based Condiments	Sharpie	Soda	Tea
Method 1			X	X			X	X		X		X	X
Method 2		X			X	X			X		X		
Method 3	X												