

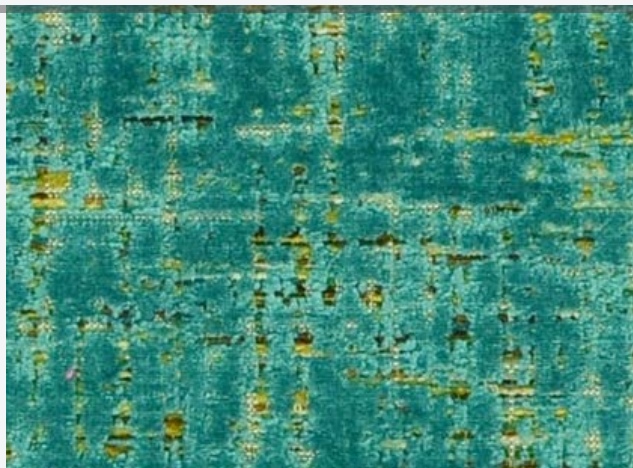
Molten

alta™ finish

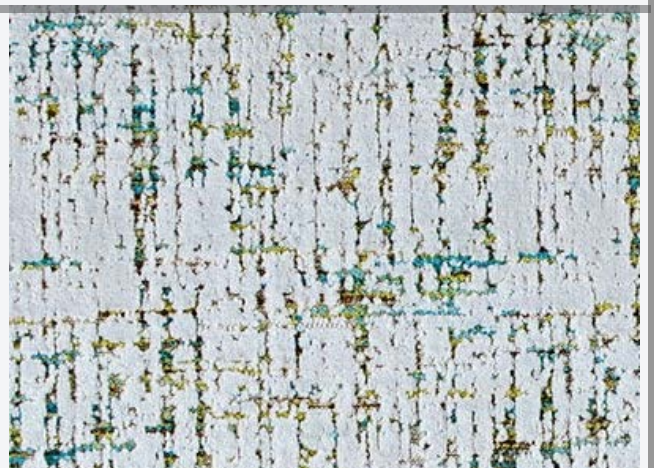
Java



Teal



Maize



gmffabrics™

Casino
Upholstery
Back of Chair

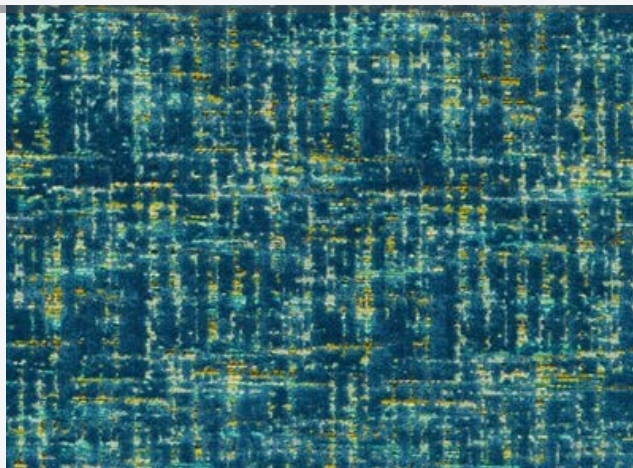
Molten

alta™ finish

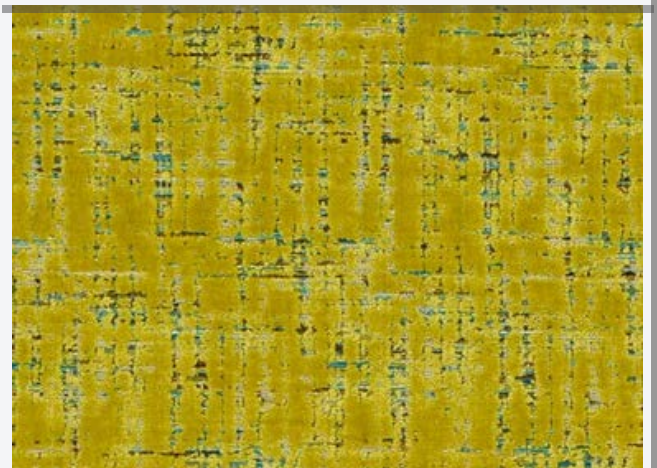
Noir



Bright Blue



Sunflower



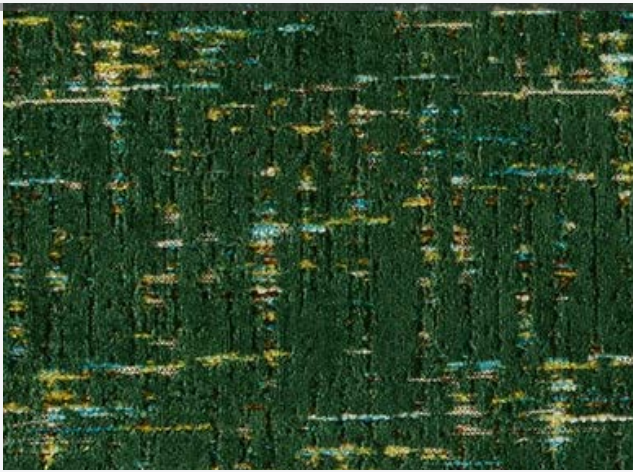
gmffabrics™

Casino
Upholstery
Back of Chair

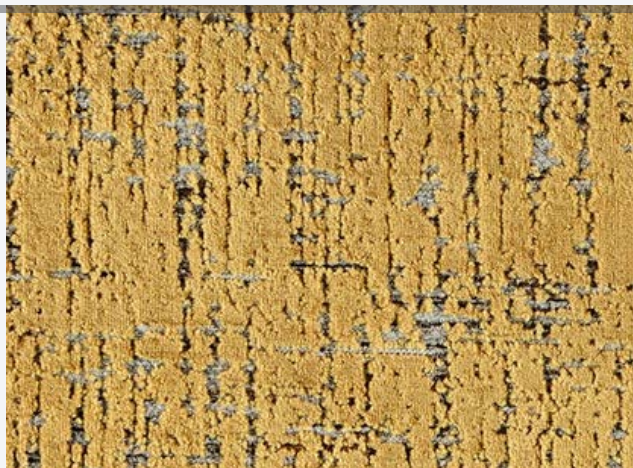
Molten

alta™ finish

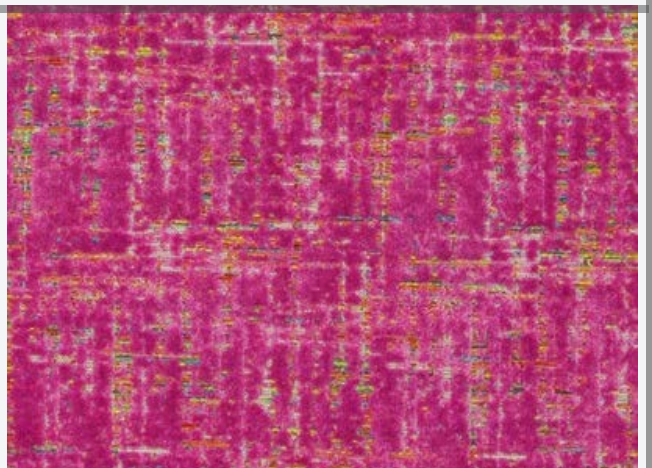
Evergreen



Bullion



Flush

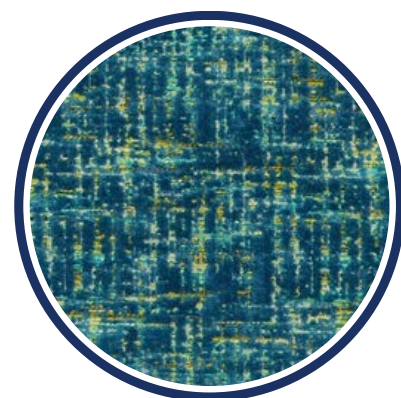


Molten

alta™ finish

Specifications:

Pattern:	Molten
Content:	54% Polyester, 32% Viscose, 14% Cotton
Backing:	Alta Acrylic
Finish:	alta™
Abrasion:	38,000 DR [Wyzenbeek]
Width:	54'/55"
Repeat:	NA
Colors:	9
UV:	Rate 5 After 40 Hours
Pilling:	Class 4.5
Breaking Strength:	WARP 280.0 FILL 178.0 LBF
Slippage:	WARP 94.0 FILL 86.0 LBF
Tear Strength:	WARP 39.3 FILL 31.2 LBF
Flammability:	CA-117 2013, NFPA 260 UFAC Class 1
Cleaning:	See alta™ Cleaning instructions at gmffabrics.com for detailed cleaning instructions.



Molten



alta™ performance finish for [hospitality](#)