

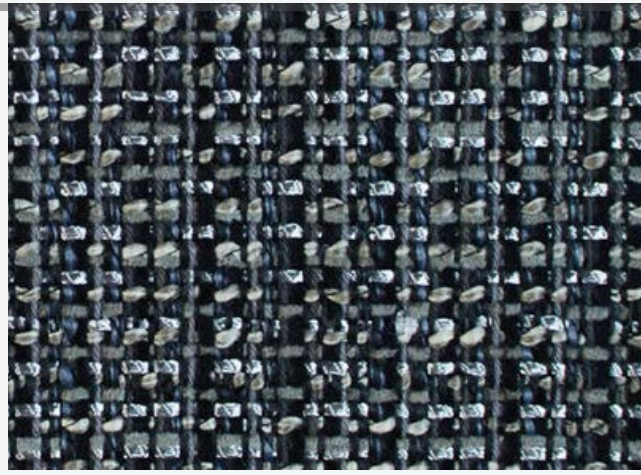
gmffabrics™

Casino  
Upholstery  
*Back of Chair*

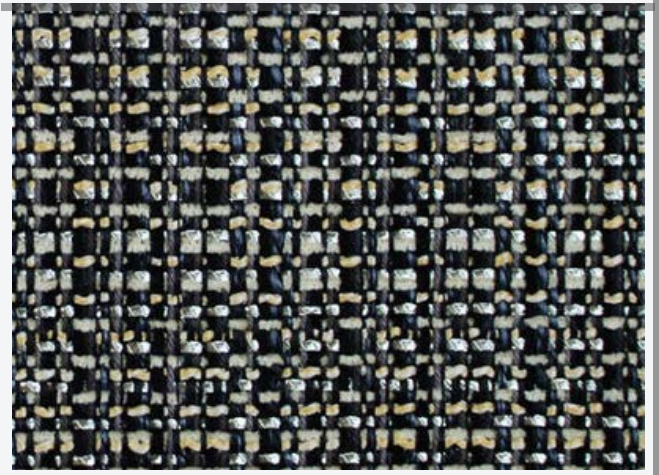
Composition

alta™ finish

Carbon



Black Knight



Ore



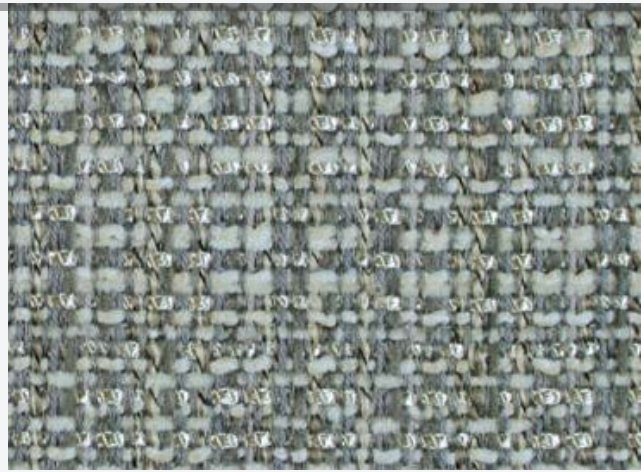
Seamist



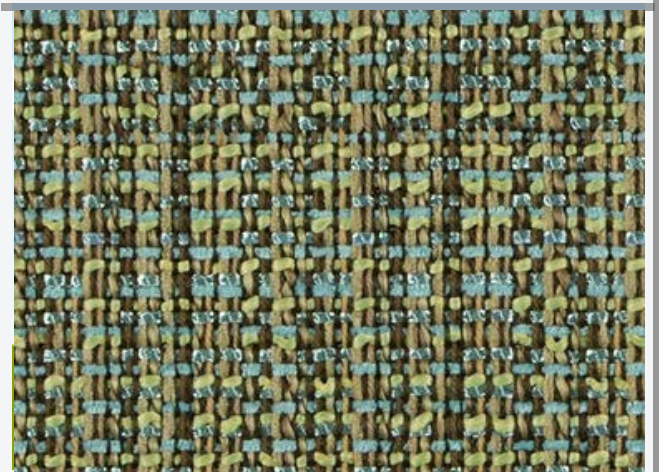
Composition

alta™ finish

Element



Multi



Bronze



Salt Lake



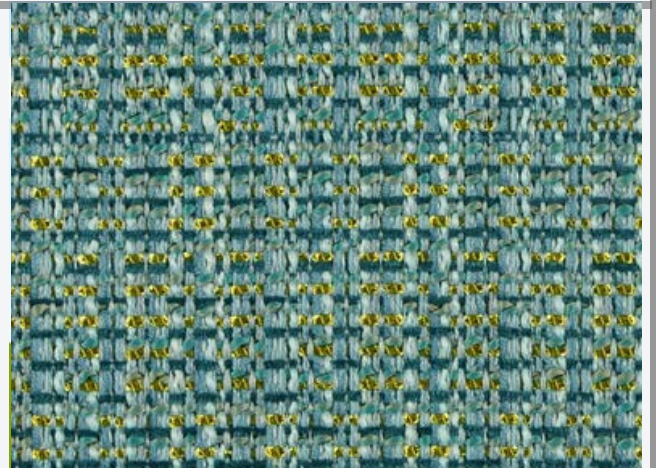
Composition

alta™ finish

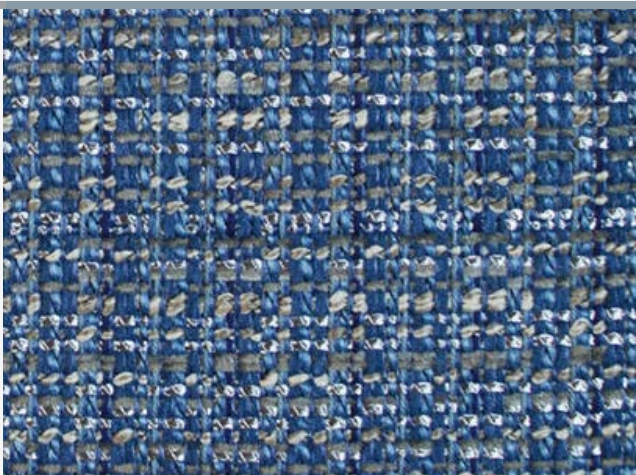
Aquamarine



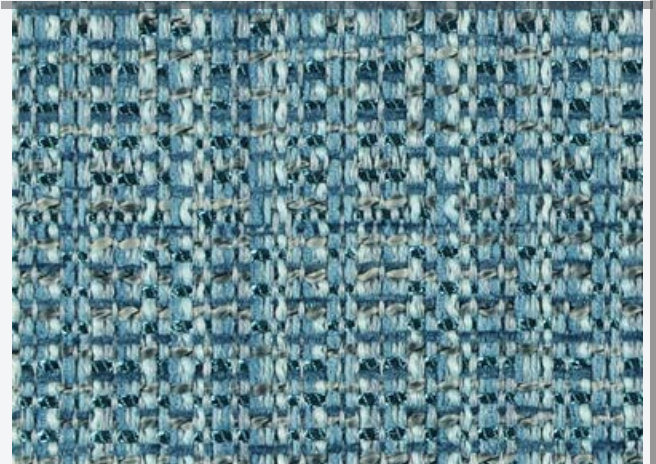
Teal



Cadet



Powder Cake



gmffabrics™

Casino  
Upholstery  
*Back of Chair*

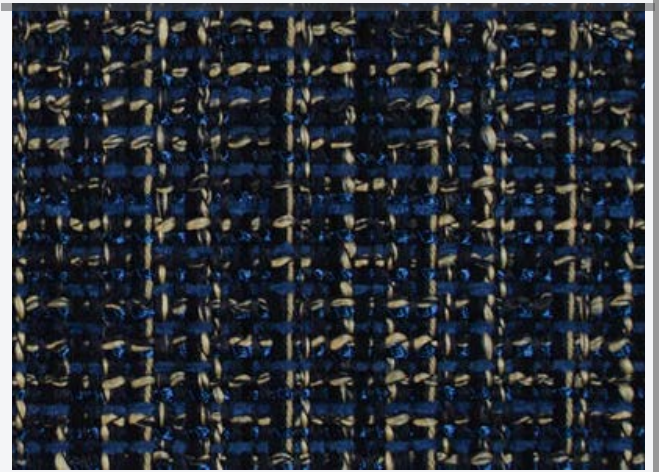
Composition

alta™ finish

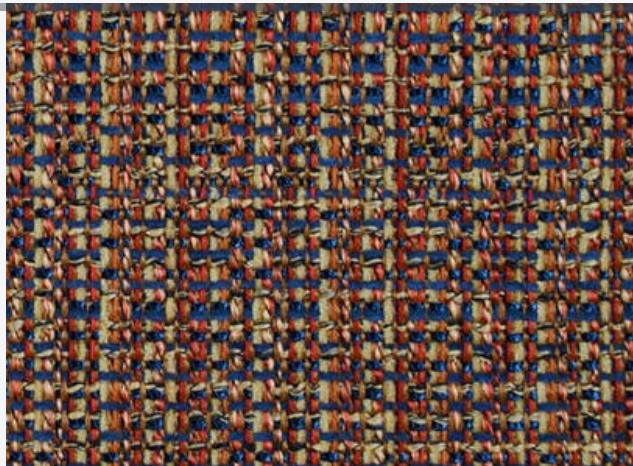
Taupe



Baltic



Hot Mess



Confetti



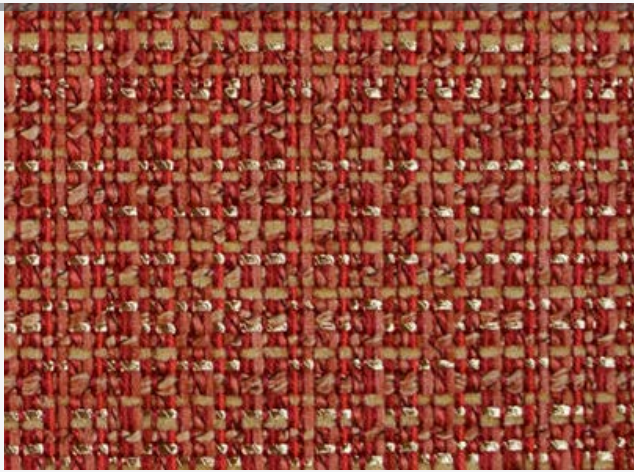
gmffabrics™

Casino  
Upholstery  
*Back of Chair*

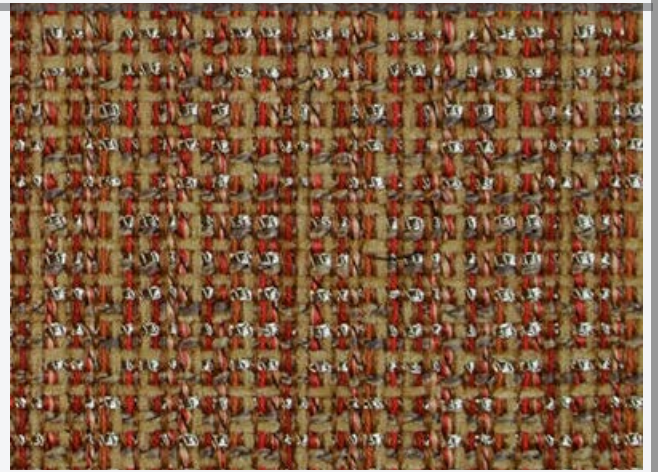
Composition

alta™ finish

Radish



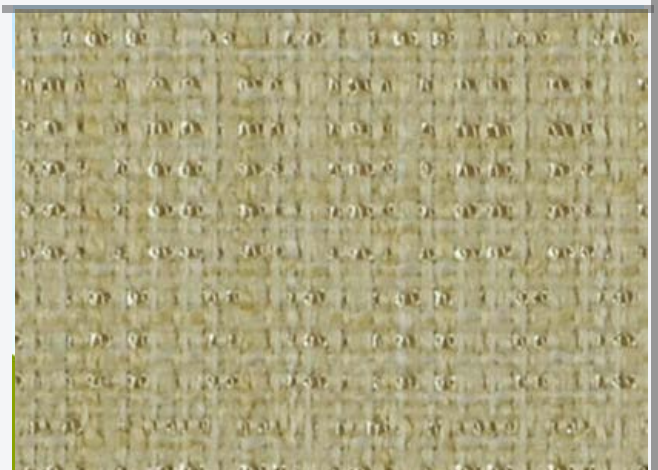
Sunstone



Goldie



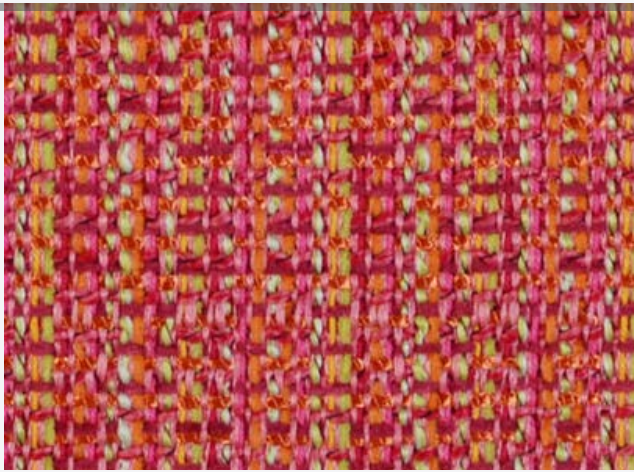
Off White



Composition

alta™ finish

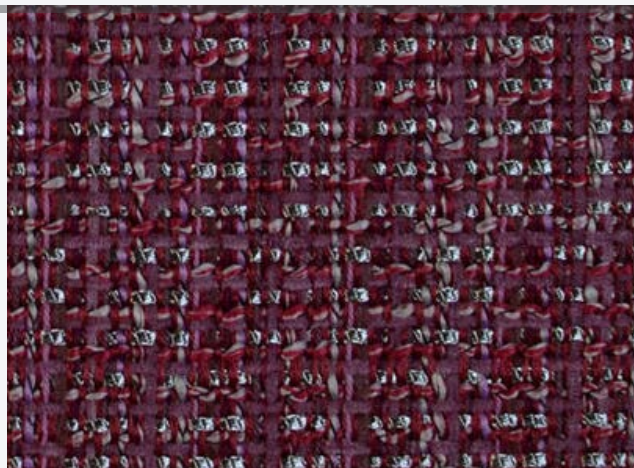
Caicos



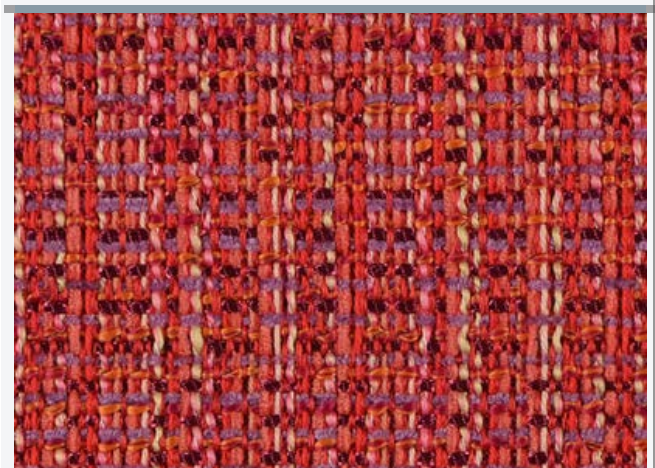
Tangerine



Purple Haze



Rhubarb



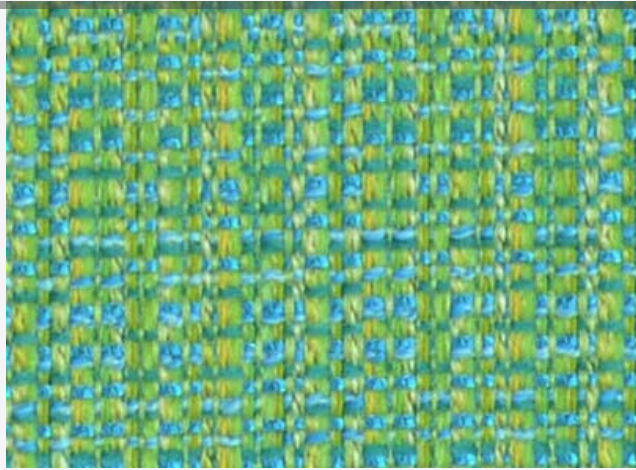
gmffabrics™

Casino  
Upholstery  
*Back of Chair*

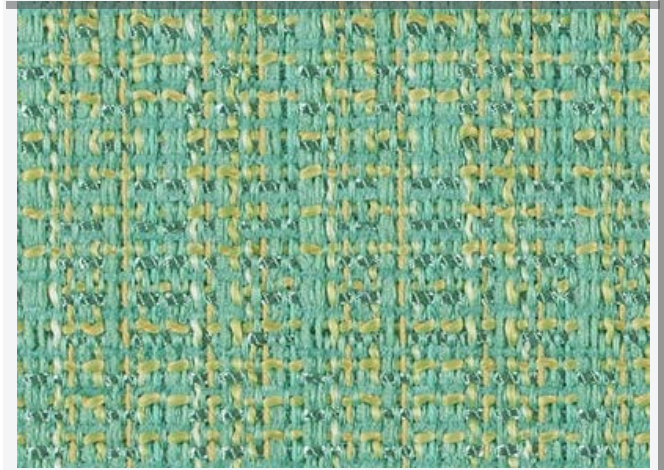
Composition

alta™ finish

Turks



Meadow



Sky



Ocean



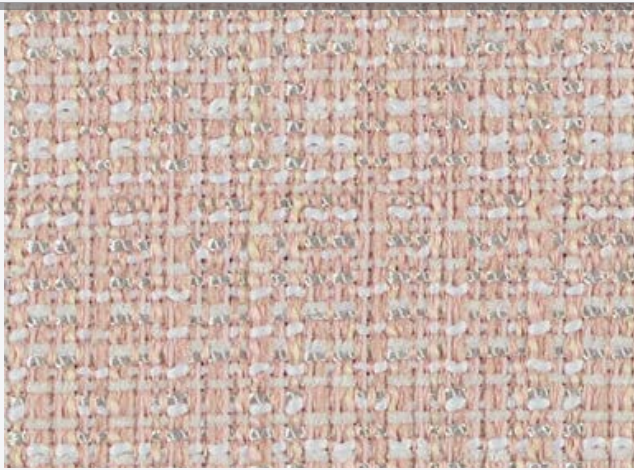
gmffabrics™

Casino  
Upholstery  
*Back of Chair*

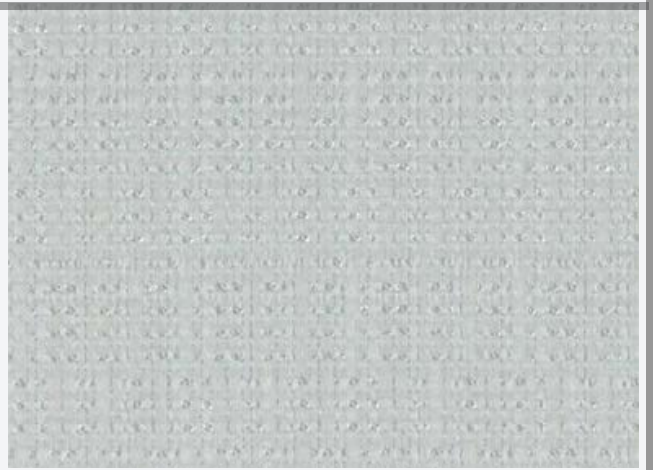
Composition

alta™ finish

Rose



Pure White



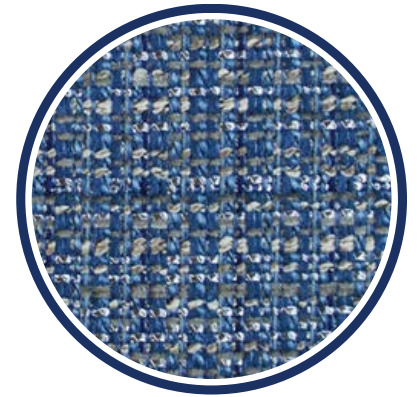


# Composition

# alta™ finish

Specifications:

Pattern:	<b>Composition</b>
Content:	49% Polyester, 24% Cotton, 23% Acrylic, 4% Rayon
Backing:	Polyester Blend
Finish:	<b>alta™</b>
Abrasion:	50,000 DR [Wyzenbeek]
Width:	54"/55"
Repeat:	4.25" V
Colors:	30
UV:	Rate 3.5 After 40 Hours
Pilling:	Class 5
Breaking Strength:	WARP 487 FILL 289 LBF
Slippage:	WARP 93.7 FILL 28.1 LBF
Tear Strength:	WARP 60.2 FILL 36.4 LBF
Flammability:	CA-117 2013, NFPA 260 UFAC Class 1



*Composition*

Cleaning: **See alta™ Cleaning instructions at [gmffabrics.com](http://gmffabrics.com) for detailed cleaning instructions.**



alta™ performance finish for [hospitality](#)