

Questyle
Audio Engineering

QP₂®

USER'S MANUAL

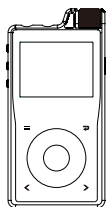
www.questyleaudio.com

Contents

Getting Started	02
• QP2R Overview	03
• Power Management	05
• Charge QP2R Battery	05
• Insert/Remove Micro SD Card	06
• Update Firmware	06
• Connect QP2R to Computer	06
• Transfer Music Files	07
• Play Music Files	07
How to Use QP2R	08
• Native Playback of Music Files	08
• Main Menu Description	08
• Icons in Status Bar	09
• Operation Instructions	09
• Settings	10
QP2R USB DAC	13
• QP2R USB DAC Feature	13
• Instructions	14
• PC System Requirements	14
• USB DAC Driver Installation	16
• DSD Setup on JRiver Media Center	18
• Foobar Setup	21
• Setup on Mac OS X	26
Specifications	27
Miscellaneous	28

Thank you for buying Questyle Audio QP2R High-res Portable Audio Player.
Read this User Manual to find out how to use QP2R.

Getting Started



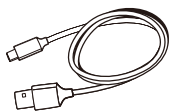
QP2R®



Cloth bag



QP2R Quick Start Guide



USB type C
cable



Optical cable
connector



Silicone disc for
the steering wheel

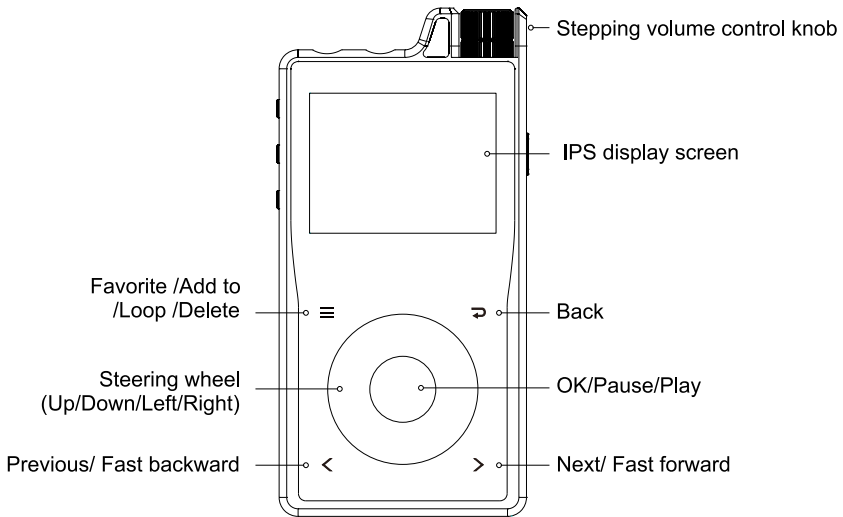


Silicone patch
for the OK button

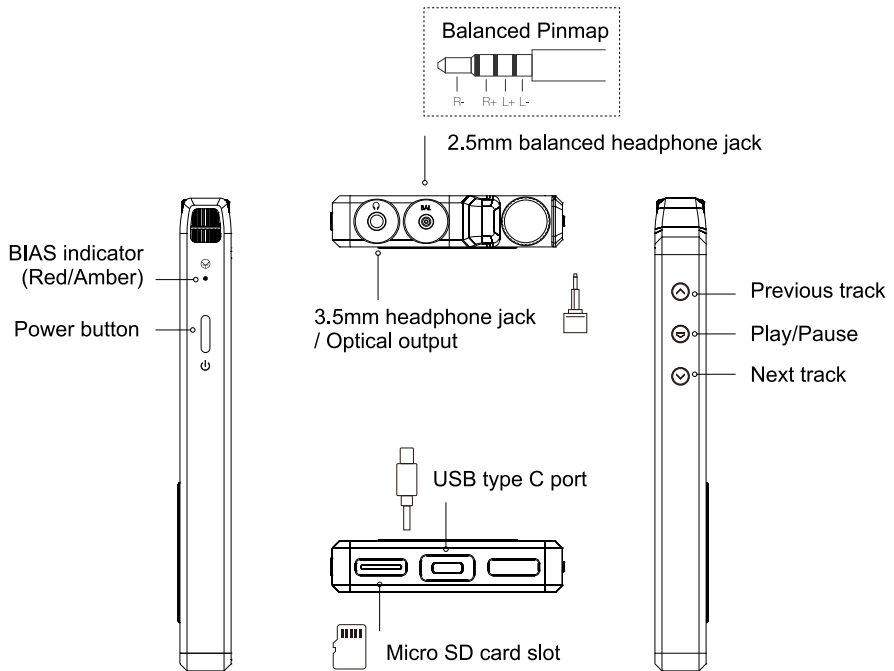
In the Box:

QP2R	1pc
Cloth bag	1pc
QP2R Quick Start Guide	1pc
USB type C cable	1pc
Optical cable connector	1pc
Silicone disc for the steering wheel	1pc
Silicone patch for the OK button	1pc

QP2R Overview



- ① Stepping volume control knob: rotate the knob to adjust volume. You can go to “Settings”-“Volume lock” and toggle it “On” to make the volume control inactive while the screen is off.
- ② Favorites/Loop/Add to/Delete button: with a song playing, click this button to add the song to Favorites/Playlists, or to Loop/Delete it.
- ③ Back button: click it to move to the previous menu. (Press and hold it to go back to the main menu.)
- ④ Steering wheel: scroll the wheel to move up, down, left or right.
- ⑤ OK/Pause/Play button: click it to confirm selections or to play/pause a song, or to wake the screen.(Press and hold it to disconnect QP2R from the USB connection to your computer.)
- ⑥ Previous/Fast backward button: click it to move to the previous track, or to the left/up selections. Press and hold it to go backward fast.
- ⑦ Next/Fast forward button: click it to move to next track, or to the right/down selections. Press and hold it to go forward fast.



⑧ 3.5mm headphone jack/Optical output jack: it is used to plug in a 3.5mm headphone, or to output optical signals while QP2R is connected to other devices.(You can use the included optical cable connector.)

⑨ 2.5mm balanced headphone jack: it is used to plug in a 2.5mm balanced headphone. (Refer to the Balanced Pinmap to get detailed specifications for headphones.)

⑩ Micro SD card slot: it is used to insert in a micro SD card (Max. 200G).

⑪ USB type C port: it is used to connect QP2R to your computer, or to charge QP2R battery. Please use the included USB type C cable.

⑫ BIAS indicator: it shows the “Standard” BIAS indicated by orange light, and the “High” BIAS by red light.

⑬ Power button: press this button to turn on/off the screen, press and hold the button to turn on/off QP2R.

Power Management

1) Turn on/off QP2R

press and hold the Power button  to turn on/off QP2R.

2) Turn on/off the screen

- ① When the screen is on, press the Power button to turn it off.
- ② When the screen is off, press the Power button to turn it on.

3) Reset

If QP2R fails to work unexpectedly, you can press and hold the Power button for 10 seconds to force QP2R to shutdown, then restart QP2R.

Charge QP2R Battery

Connect QP2R to an adapter or a computer with the included USB type C cable and charge QP2R battery.

- QP2R battery will be fully charged in about 4 hours via a 5V/2A adapter. It will take a little longer to be fully charged via a computer.
- QP2R can work while charging, which will extend the charging time.

NOTE:

① The USB type C port for charging and data transfer follows the USB 2.0 communication protocol. Fast charging is not allowed. Do not connect QP2R to a fast charger, otherwise, the failure caused by fast charging will not be covered in free warranty.

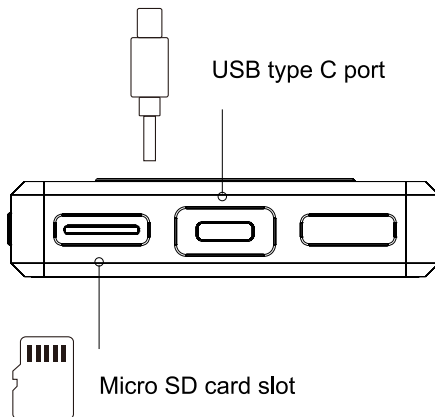
② Do not use any other USB cable except the included USB cable.

Insert/Remove Micro SD Card

Insert your micro SD card into the card slot with its face down. Remove the inserted card by pressing it. (As shown in the picture.)

NOTE

- ① Insert your micro SD card very gently to avoid damage.
- ② Do not remove the micro SD card while it is in use, otherwise it may result in corrupting/deleting data or failure, even damage to the micro SD card.
- ③ If the the micro SD card can't be recognized or if it is malfunctioning, please format the SD card before using it. The FAT32 format is recommended.



Update Firmware

- 1) Copy file "DAP003GL.upt" to your micro SD card and insert it into the card slot.
- 2) Start QP2R and select "Settings" - "Update firmware" - "Begin".
- 3) After update, the display will show "Update is finished".

Connect QP2R to Computer

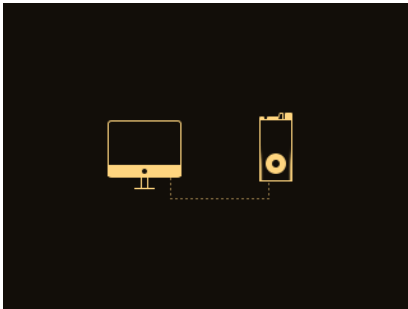
Connect QP2R to your computer with the included USB type C cable.

Transfer Music Files

Connect QP2R to your computer via the included USB type C cable, and you will see a computer-QP2R connection (as shown below) on the QP2R screen. Meanwhile, there will be a new removable storage device named QP2R shown on your computer, and you can transfer music files to the QP2R. If the connection isn't shown on the QP2R screen, please go to "Settings"->"USB "->"Memory".

NOTE

In the computer-QP2R connection, you can press the OK button of QP2R to disconnect the USB connection.



Play Music Files

1. Turn on QP2R and go to "Playlists".
2. Select any music file on the lists and play it.

How to Use QP2R

Native Playback of Music Files

QP2R can play music files on Internal memory and micro SD card. It supports 3.5mm headphone single-ended out, 2.5mm headphone balanced out, line out, optical and S/PDIF out.

NOTE:

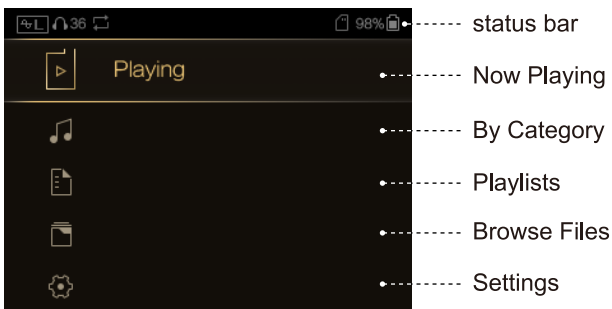
- ① With headphone single-ended out, headphone balanced out or line out, QP2R supports the native playback of audio files sampling at PCM 32kHz-384kHz and DSD64-DSD256.
- ② With optical or S/PDIF out, QP2R supports the native playback of audio files sampling at PCM 32kHz-PCM384kHz (PCM384 will be converted to PCM192), files of DSD64-DSD128 will be converted to PCM88.2kHz. Files of DSD256 will not be supported in this case.

Main Menu Description

Select language when you start QP2R for the first time, then view the main menu items including “Playing”, “Category”, “Playlists”, “Browse files” and “Settings”.

NOTE:

When you select “Playing” but without a music file playing now, it will navigate to the sub categories under “Category”. When you select “Category” for the first time, you need to update the library.



Icons in Status Bar

 : Gain: (L: low gain, M: middle gain, H: high gain)

 : Volume


 : Battery

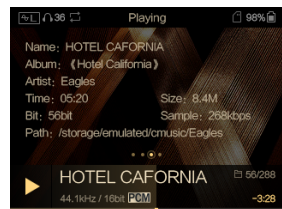
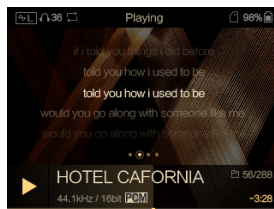
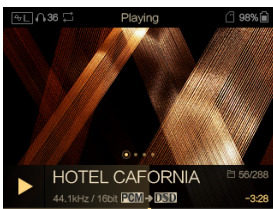
 : Micro SD card

 : Play mode: Order/Single/Loop/Shuffle

Operation Instructions

1) Playing: when you see the Playing screen, you can scroll the steering wheel to view “Playing”, “Lyrics” and “Song information”.

Click  and you will see icons for Favorites/Loop/Add to/Delete, then you can add the playing song to “Favorites”, or set the play mode, or “Delete” it.



2) Category: you can play music files by the category of Track, Album, Artist, Genre, or DSD. Select a category and navigate to a music file and then press the OK button to play it.

3) Playlists: you can create new playlists according to your preference, and all the playlists can be viewed in “Playlists”. (Fig.1 , Fig.2)

NOTE:

the name for a new playlist is to be selected only in the existing name lists of the system.

4) Browse files: you can browse music files loaded in Internal memory and micro SD card.

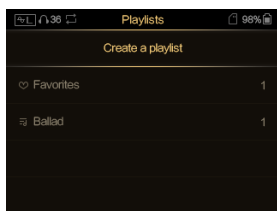


Fig.1

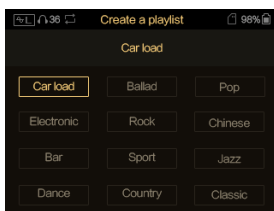


Fig.2

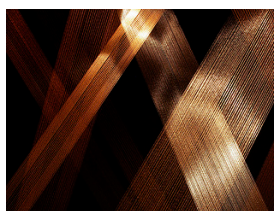


Fig.3

Settings

you can select it and press the OK button to view system settings.

Regular : you can add or remove the regular setting items in the menu as shown in the picture below.

For a selected item, “-” is to remove it from the +Regular items, and “+” is to show it.

Language: select your language when you start QP2R for the first time. Languages support Chinese Simplified, Chinese Traditional, English, German, Japanese and Russian.

Cover: if the Playing song doesn't have a cover, the following picture will be shown as its cover instead. You can also choose a cover for the Playing song from Cover selections.(See Fig.3)

Font size: select it to set the font size of system settings and the main menu.

Gain: select it to set the gain to “High” (H), “Middle”(M) or “Low”(L) for analog output.

BIAS: select it to set the bias current (Standard/High) for output stage of the analog amplification circuit. When you set it to “Standard”, the BIAS indicator on the right side of QP2R is orange, when you set it to “High”, the BIAS indicator is red, and the system power consumption will increase under the High BIAS setting.

DSD Gain: select it to set the gain compensation for DSD analog output (0dB-6dB).

EQ: select it to set “EQ1”, “EQ2” or disable the EQ feature.

Balance: select it to balance the analog output of left and right channels.

Docking analog out volume: select it to set the volume for Docking analog out to “Max” or “Adj”. When you set it to “Max”, the Docking analog out volume is not adjustable.

Docking output: select it to set the Docking output to “Digital” or “Analog”.

USB: select it to set QP2R to “DAC” or “Memory” mode. When you set it to “DAC”, QP2R will be used as an external sound card while connecting to your computer. When you set it to “Memory”, QP2R will be used as a removable hard drive.

Sleep time: select it to set the sleep auto off time for QP2R, choices are “0”, “10min”, “20min”, “30min”, “40min”, “50min”, “60min”. You can set it to “0” to disable this feature.

Update library: select it to set the way of updating library to “Manual” or “Auto”. When you select the “Category” for the first time, it is necessary to update the library.

Play mode: select it to set the play mode, choices are “Order”, “Single”, “Loop” and “Shuffle”.

Breakpoint play: select it to choose where to pick up if the QP2R is turned off and back on again. If you set it to “Tack”, it will begin with the last track played when QP2R is off and back on again. If you set it to “Position”, it will begin with the

playback from where you stopped at the last track when QP2R is off and back on again. You can set it to “Close” to disable this feature.

Power on volume: select it to set the power on volume to “Memory” or “Custom”. If “Memory” is selected, the power on volume will remain the same as the volume of the last setting when QP2R is off. If “Custom” is selected, the power on volume will be fixed as you have set.

Custom power on volume: once “Power on volume”- “Custom” is selected, you can select this setting to have QP2R always start at a fixed volume chosen from “0” to “60”.

Volume direction: select it to set the direction of volume up/down to “Left max” or “Right max”.

Volume lock: select it to set the volume lock to “On” or “Off”. When you set the “Volume lock”-“On”, the volume control is inactive while the screen is off. When you set the “Volume lock”- “Off”, the volume is adjustable while the screen is off. This setting will not affect the adjustable volume while the screen is on.

Backlight brightness: select it to set the screen brightness from “1” up to “5”.

Backlight time: select it to set the backlight time to “10S”, “30S”, “60S”, “90S” or “Always on”.

Vibration: select it to set the vibration to “Low”, “Medium”, or “High”.

Auto shut down: select it to set the auto shut down to “On” or “Off”. When you set it to “On”, QP2R will self power off when there is 5 minutes of inactivity. You can set it to “Off” to disable this feature.

Format: select it to format the Internal memory of QP2R or micro SD card.

Reset: select it to restore QP2R to factory defaults.

Update firmware: select it to update the firmware of QP2R according to “Help” information.

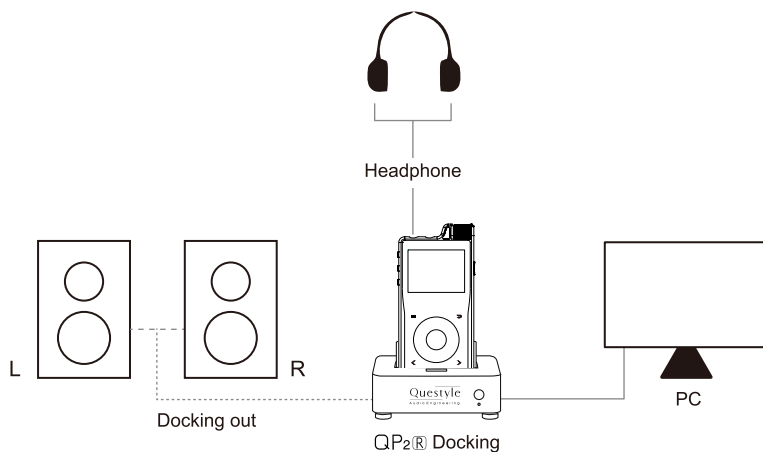
About: select it to view Model, Firmware version, Internal memory and micro SD card memory.

QP2R USB DAC

QP2R supports headphone and line outputs, as well as Optical and S/PDIF outputs. (When QP2R is used as a DAC for digital output, DSD files sampling at DSD256 in your computer is processed only in DoP mode other than Native mode.) You can press the OK button to disconnect QP2R from the USB connection to your computer and then go back to the main menu.

QP2R USB DAC Feature

What's new with Questyle QP2R High-res Portable Audio Player is the feature of USB DAC, namely, QP2R will be used as a DAC/Headphone Amp when it is connected to your computer via a USB cable. Music files in your computer will be delivered to QP2R for D/A converting, then to QP2R's headphone output, which will get you much better sounding.



Instructions

1. Start QP2R and select “Settings” - “USB ” - “DAC”.
2. Connect QP2R to your computer via the included USB cable, then the QP2R display will show “USB DAC” (as shown below).



3. If your computer is Windows OS, you have to install the USB DAC driver first. (Please refer to the USB DAC Driver Installation.) If your computer is a version later than the Mac OS 10.5.7, there is no need to install the USB DAC driver.
4. Play music files in your computer. (It's better to play DSD files with a professional audio player.)

PC System Requirements

1) Operating System

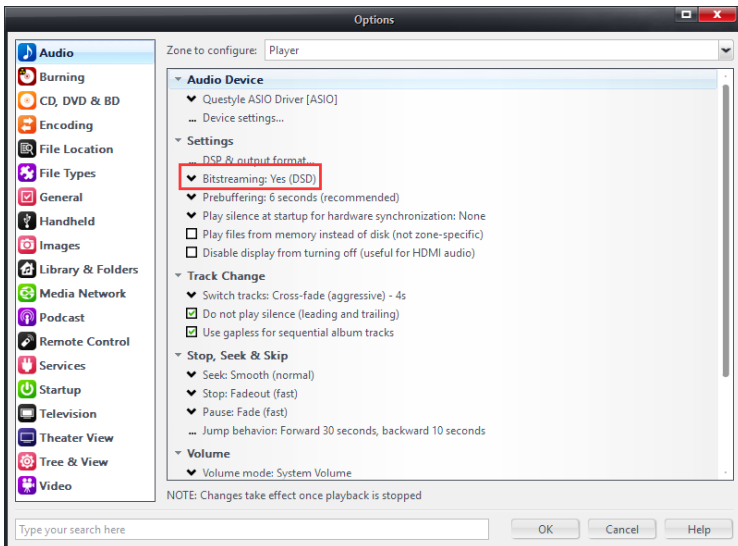
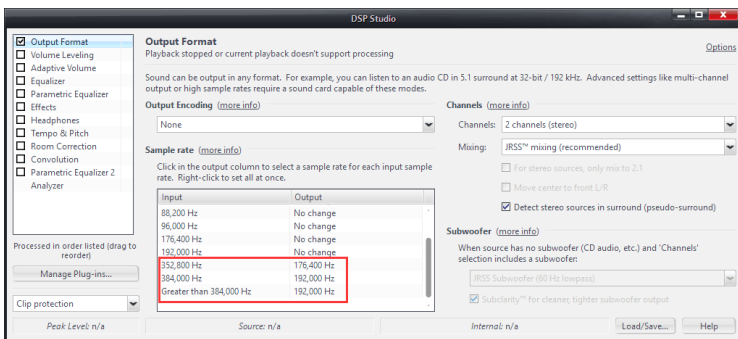
QP2R's driver and hardware support Win XP/Vista/Win7/Win8/Win8.1. For Mac OS, versions later than the Mac OS 10.5.7 are well matched without installing any driver.

2) Media Player

QP2R is not limited to any special media player. Any PC compatible player (including video players) is well matched.

3) File Format

There are some limitations on files supported by QP2R USB DAC. It supports audio files sampling at PCM 32kHz-192kHz.(Files within this sample range will be directly output to USB without SRC on PC.) Files sampling at PCM384 or higher will be converted over SRC to that of lower sample rate (PCM192kHz) before they are played. QP2R USB DAC supports DSD files of Native DSD64 and DSD128. Files of DSD256 will be converted to PCM before they are played. Take JRiver as an example to show the QP2R USB DAC Setup.

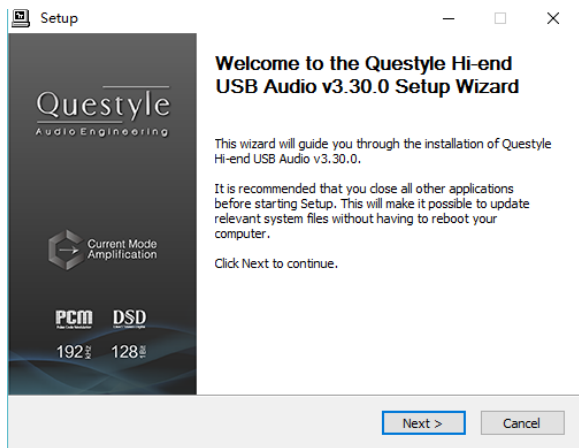


USB DAC Driver Installation

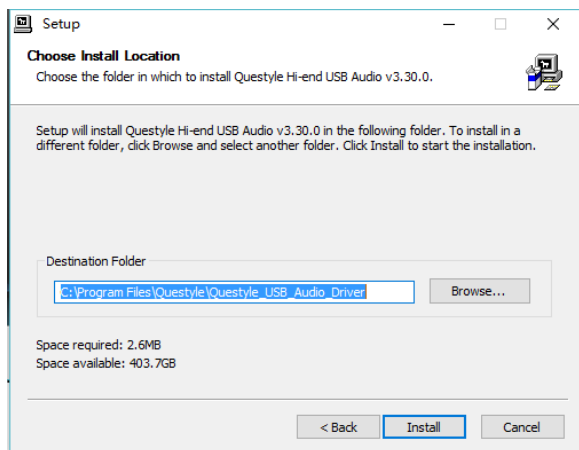
QP2R can be recognized by your computer after installing the QP2R USB DAC Driver on Windows OS. We take Win7 64bit operating system for an example to show the Driver installation.

- 1) Visit Questyle Audio website (www.questyleaudio.com) , click “Download” - “Driver” and select  QP2R USB DAC Driver.zip .
- 2) Double click “Setup.exe”.
- 3) Follow the steps below:

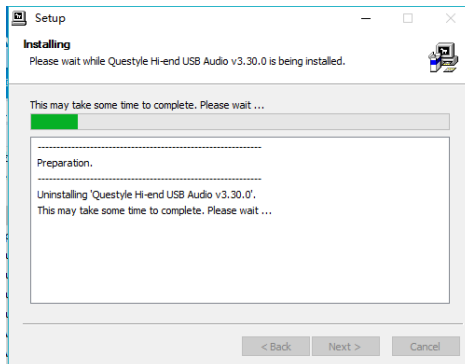
Click “Next”



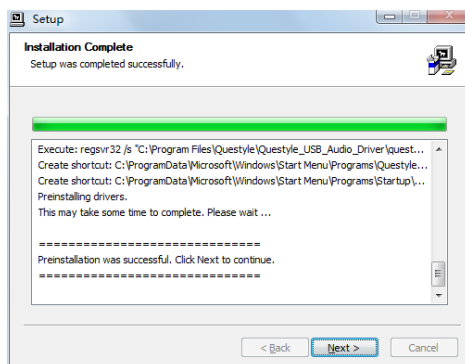
Click “Install”
(Default install location is C drive)



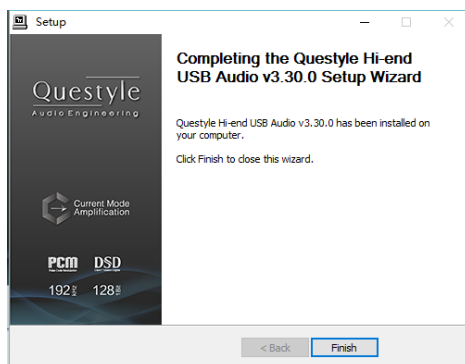
Installation will take 3 or 5 minutes



Installation is completed, click "Next"



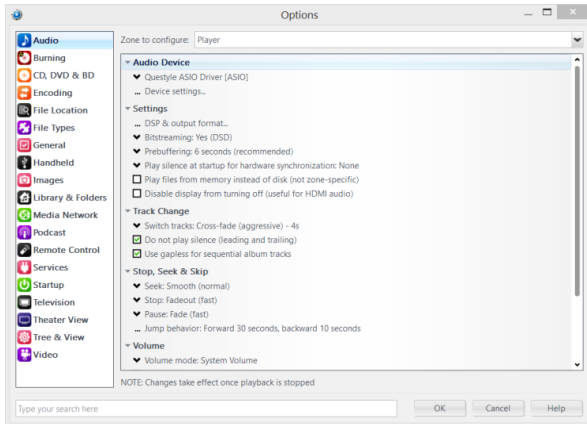
Click "Finish" to exit the installation



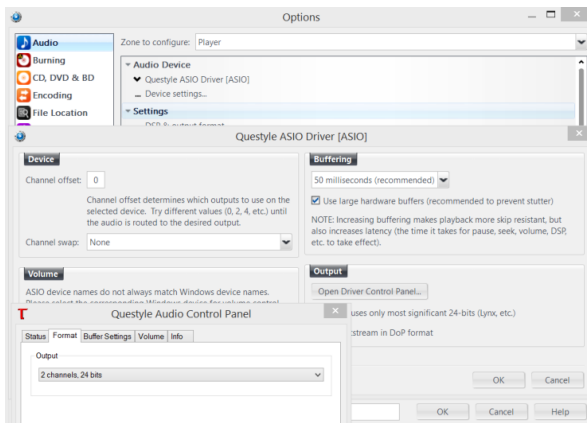
- 4) Restart your computer and the QP2R Driver installation is done.
- 5) Installation on Win XP, Vista is similar to the above.

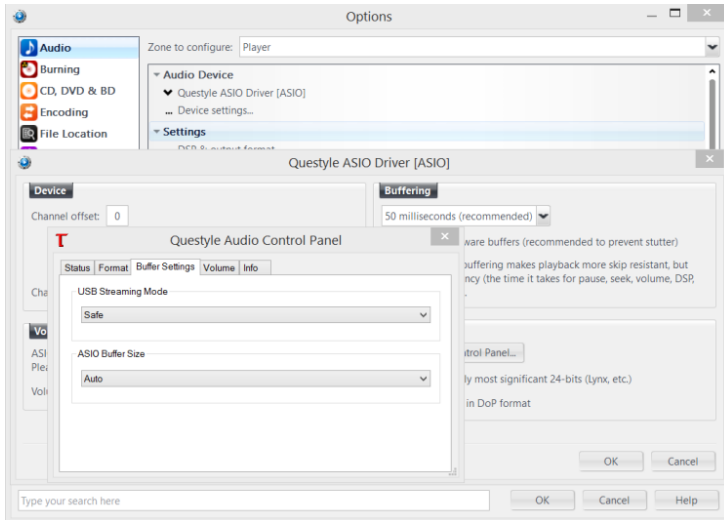
DSD Setup on JRiver Media Center

- 1) Open JRiver Media Center, click “Tools” and then select “Options”.
- 2) Select “Questyle ASIO Driver[ASIO]” under “Audio Device”.

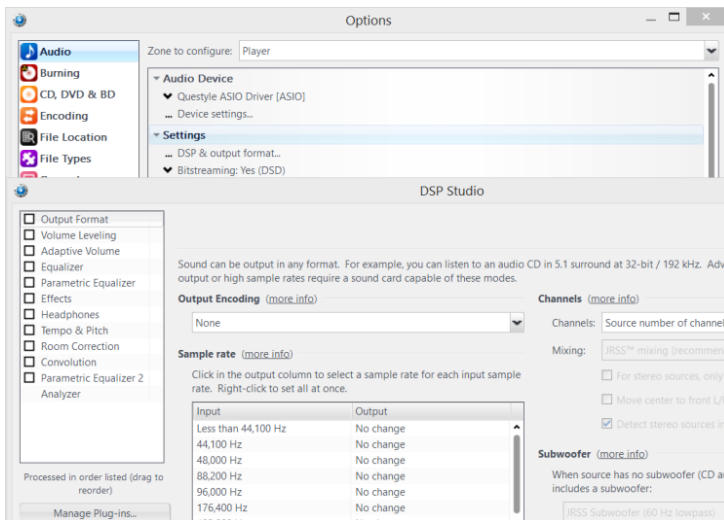


- 3) Select “Settings” under “Audio Device”, and click “Open Driver Control Panel” under the ASIO, then select “Format”- “2Channels,24Bits”, select “Buffer Settings”- “Safe”, “Auto”, then close and click “OK”.

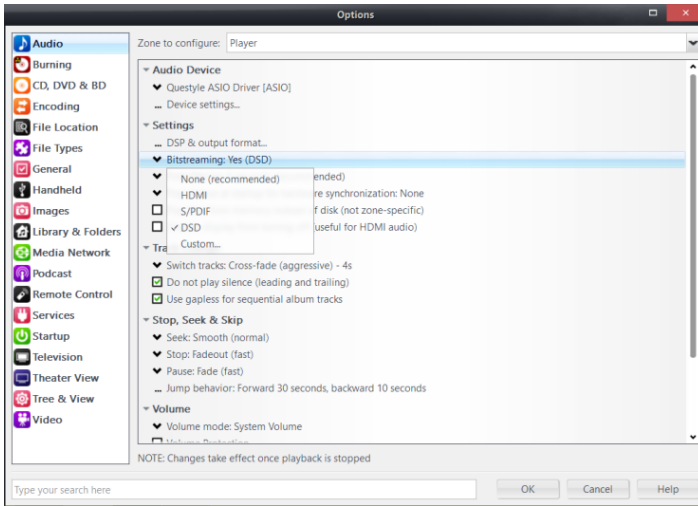




4) Click “DSP & output format” under “Settings”. Make sure nothing on the left row is ticked. (To wit: without any processing to DSD data, ensuring original sound.)

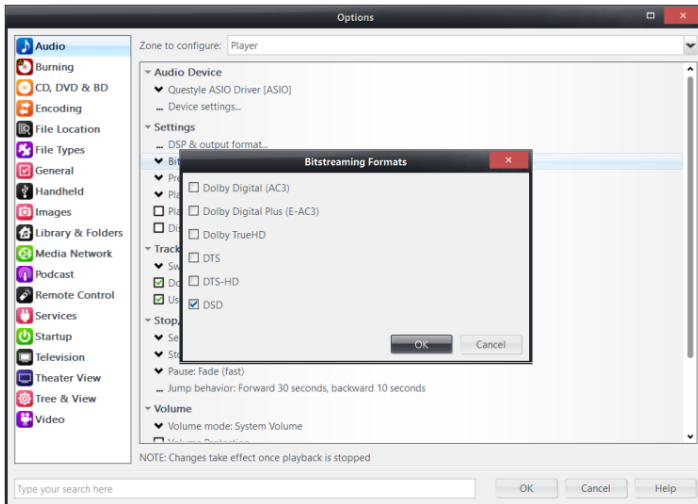


5) Select “Custom” under “Bitstreaming: Yes (DSD)”.



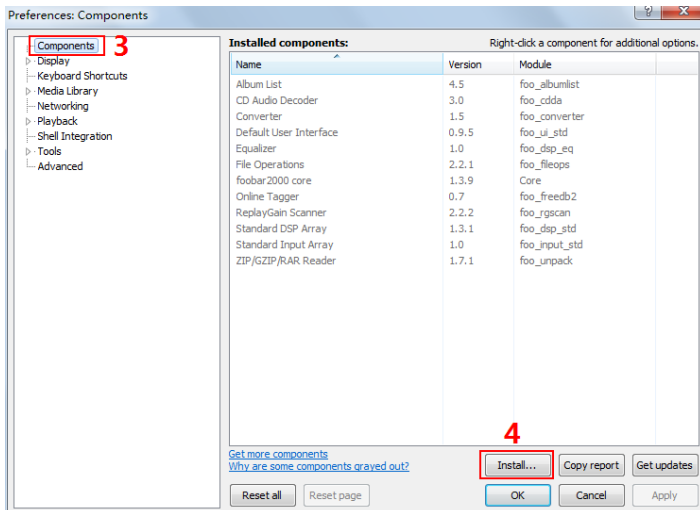
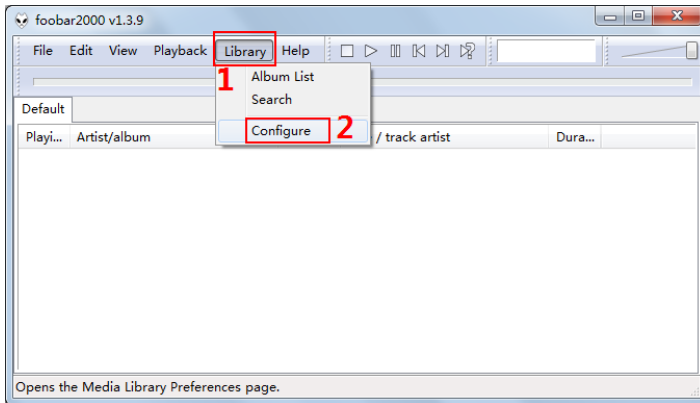
6) Tick “DSD” and then click “OK”.

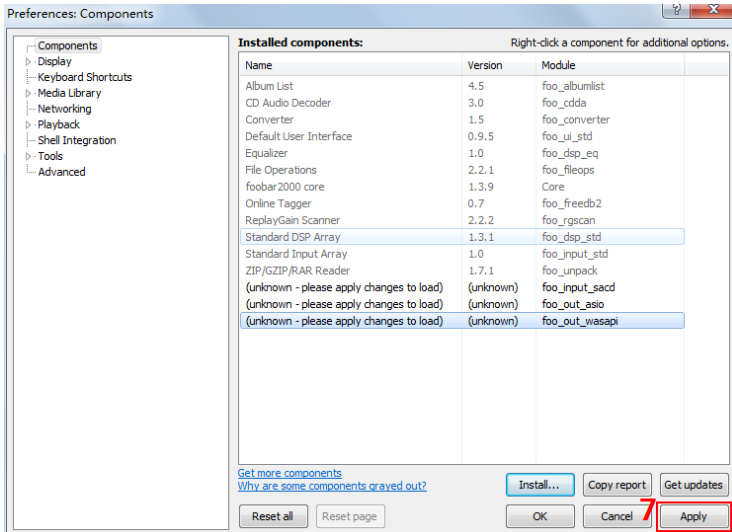
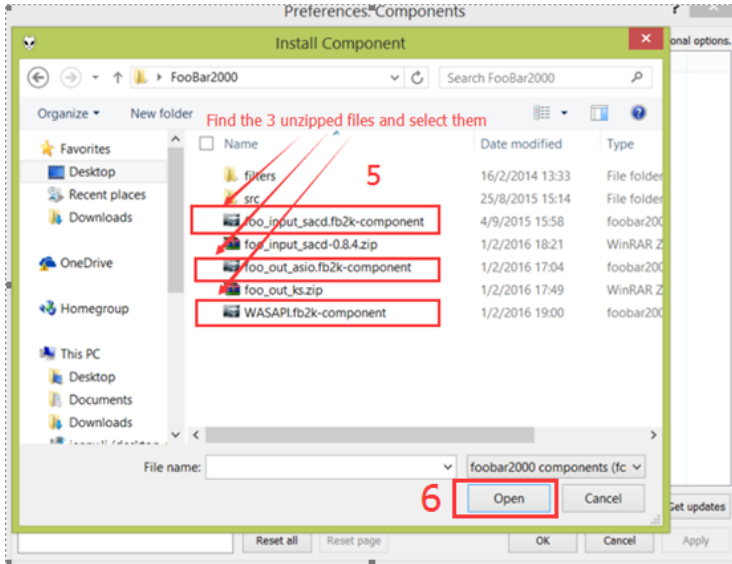
Save and exit. The setup is completed.

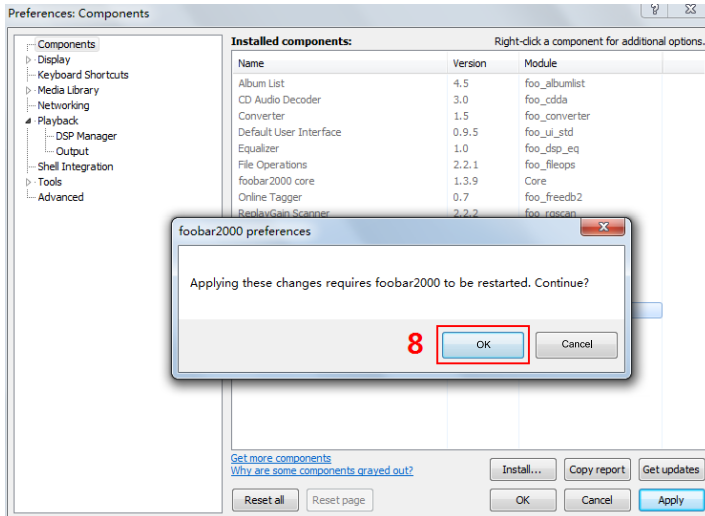


Foobar Setup

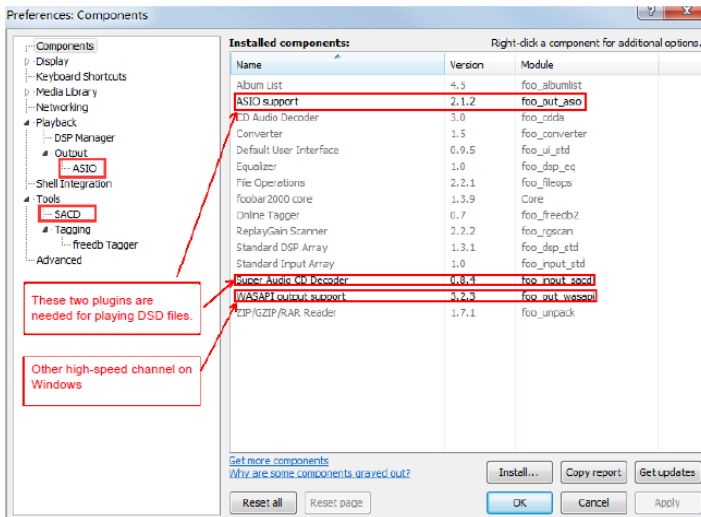
- 1, Install Foobar2000
- 2, Install Plugins
- 1) Install plugins according to the following steps highlighted from 1 to 8.






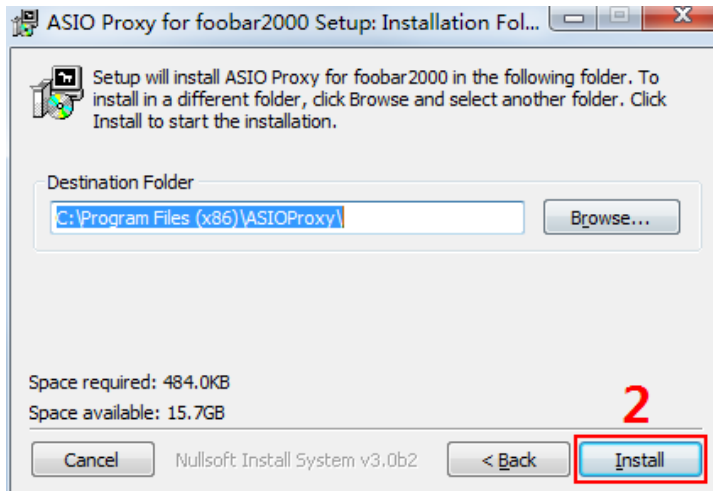
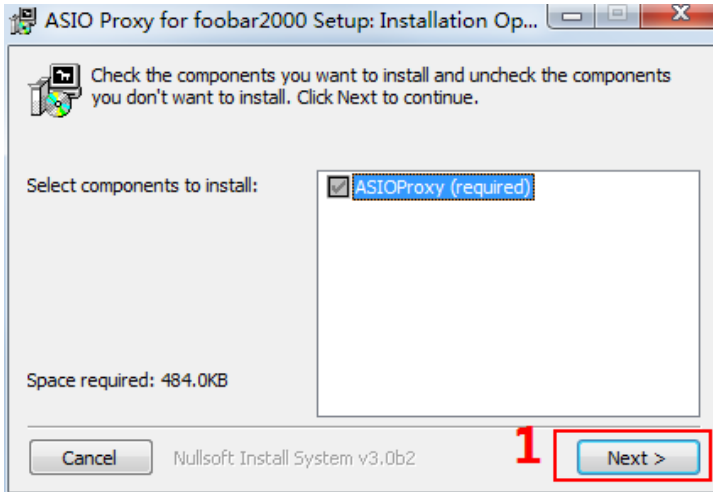


2) Restart Foobar2000 and go to the install location to confirm that the three plugins highlighted in the following figure are installed successfully. If so, you will see two more options (ASIO and SACD) on the left of the interface. (as shown in the figure below)

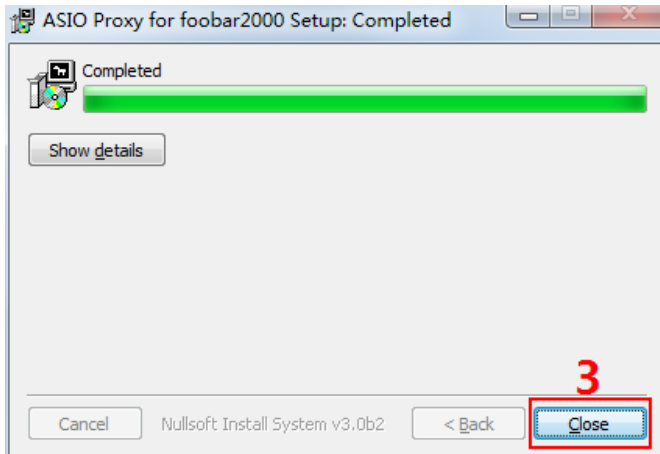


3) Install ASIO driver:

double click  ASIOProxyInstall-0.8.3.exe in the unzipped folder and then finish the installation according to the following steps highlighted from 1 to 3.

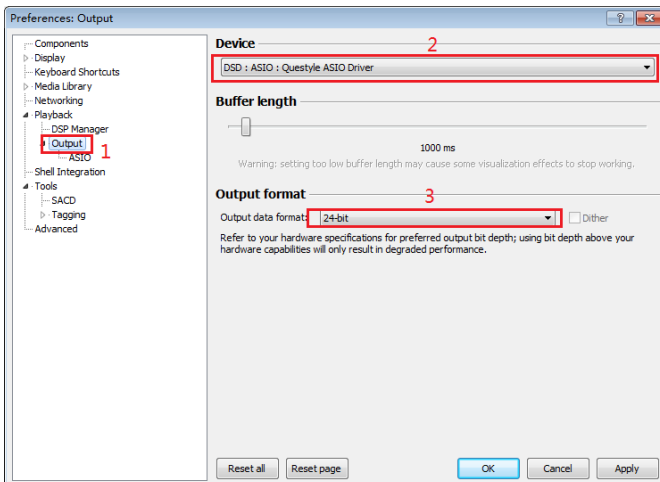


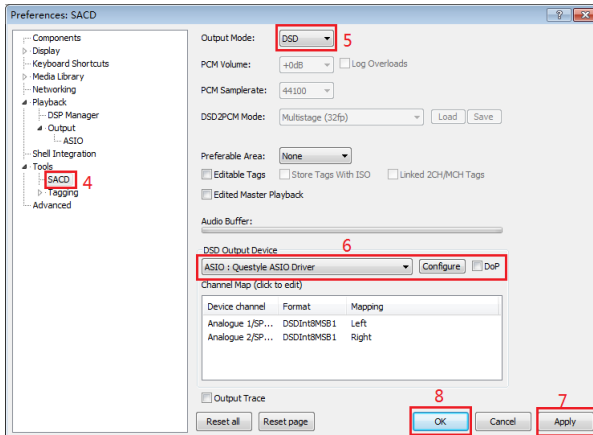
If you come to this step, you have completed all the preparations.



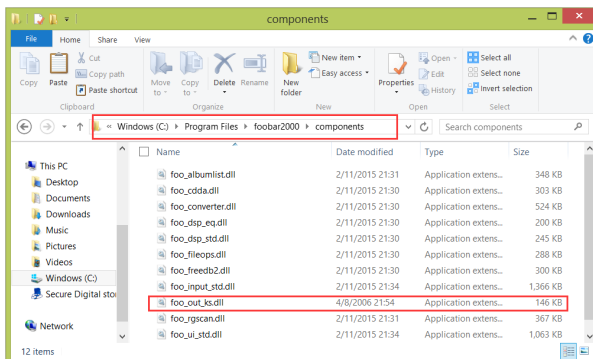
3, Software Settings

1) Connect QP2R to your computer with the included USB cable and power it on. Finish software settings according to the following steps highlighted from 1 to 8. Close and restart the software, then Foobar2000 is ready for playing PCM and DSD files.





2) Install plugins for Core Audio Stream channel: copy the “ foo_out_ks.dll” (highlighted in the figure below) to “components” under installation directory. Then restart the Foobar2000 and it is ready for playing music files.



Setup on Mac OS X

For Mac OS X, no special drivers are needed for later versions of Mac OS 10.5.7. Connect QP2R to your Mac via the included USB cable, go to “ Preferences”- “Sound” on your Mac, and make sure QP2R is selected as the default output device (as shown below). When you see the following interface, the QP2R USB DAC is ready to work.

Specifications

Patented fully discrete/full-balanced/Current Mode AMP

Pure Class A BIAS control system

Audio Formats Supported	WAV, FLAC, WMA, MP3, OGG,APE(Normal/High/Fast), AAC, ALAC, AIFF, DFF, DSF
Sample Rate	PCM : 32kHz - 384kHz (16/24/32Bit) DSD Native: DSD64(1Bit 2.8MHz), DSD128(1Bit 5.6MHz), DSD256(1Bit 11.2MHz)
DAC	AKM AK4490 DAC chip
Outputs	Headphone out(3.5mm)/Optical out(3.5mm) /Balanced out(2.5mm)
Output Level	Unbalanced 1.8 Vrms / Balanced 3.6 Vrms
Output Power	Unbalanced RL=32 Ω , Pout=38mW; RL=300 Ω , Pout=9mW Balanced RL=32 Ω , Pout=70mW; RL=300 Ω , Pout=38mW
Frequency Response	± 0.1 dB (20Hz-20kHz)
S/N	100dB @ 1kHz, Unbalanced / 102dB @ 1kHz, Balanced
THD+N	0.0006% @1kHz, Unbalanced / 0.0005% @1kHz, Balanced
Output Impedance	0.1 Ω
Charging&Data Transfer	TYPE-C , 5V / 2A(PC & MAC)
PC OS Requirements	Windows XP / Windows 7&8(32/64bit) / Mac OS X 10.7 or later
Memory	Internal: 64GB; External: micro SD card (Max. 200GB) x1
Battery	3,100mAh 3.7V Li-Polymer battery, 10 hours of battery life
Display	IPS 2.4 inch (Sharp LCD)
Operating System	Linux
Body Material	CNC machining aluminum, available in Gold/Space Gray
Dimension	65[W] x 134[H] x 14.5[D] (mm)

Miscellaneous

Cautions

1. There is a built-in battery in your QP2R, please keep it from long-time exposure to sunlight, fire or overheated environment.
2. If you need to replace the QP2R battery, please contact your dealer. Do not disassemble QP2R or replace the battery by yourself.
3. If your QP2R fails to work, please contact your dealer. Do not disassemble QP2R by yourself.
4. When QP2R is working with 2.5mm full balanced out under the High BIAS setting, the power consumption of its Current Mode Amplifier (working in pure Class A status) is 4 times as big as that under the Standard BIAS setting. Under this circumstance, it is normal that QP2R chassis will be a little bit hot, but the temperature will keep below 45°C. To avoid the chassis being too hot, it is not recommended to have QP2R work in the High BIAS mode while charging. In addition, if QP2R continuously works for 2 hours or longer, please take it out from the embraced case or cloth bag, or other packed materials to avoid the chassis being too hot.

Tips and Troubleshooting

My QP2R battery is slow to charge.

Please use a DC 5V/2A adapter to charge the battery fast.

My QP2R is system halted, how to reset the system?

Press and hold the power button for at least 10 seconds and let go, then press and hold it again for 4 seconds until QP2R restarts.

My QP2R USB DAC Driver can't be installed.

Make sure the "Settings"- "USB" is set to "DAC" before installing the QP2R USB DAC Driver, then connect QP2R to your computer and install the driver.

Patent Information

Questyle Audio Technology Ltd. has obtained the patent on Current Mode Amplification. Patent No.: PCT/CN2014/075775

Disclaimer

- Manufacturers, importers and distributors shall not be liable for the damage (including accidental and intentional damage) caused by improper use or operation of the product.
- We shall not provide guarantee for data loss caused by using the product.
- Update on product accessories, firmware and user manual, etc. are subject to change without prior notice.

