



# Title Plan - LT 587128

---

**Survey Number** LT 587128  
**Surveyor Reference** 41793 - The Clearing - Stages 1 & 2  
**Surveyor** Christopher Paul Hopper  
**Survey Firm** Davis Ogilvie & Partners Ltd (Christchurch)  
**Surveyor Declaration** I Christopher Paul Hopper, being a licensed cadastral surveyor, certify that--  
(a) this dataset provided by me and its related survey are accurate, correct and in accordance with the Cadastral Survey Act 2002 and Cadastral Survey Rules 2021; and  
(b) the survey was undertaken by me or under my personal direction.  
Declared on 22 Nov 2023 09:33 AM

---

## Survey Details

**Dataset Description** LOTS 1 - 123, 600, 601, 1000, 1001, 3000 - 3003 & 4000 BEING A SUBDIVISION OF LOT 3 DP 559093  
**Status** Approved as to Survey  
**Land District** Canterbury  
**Submitted Date** 22/11/2023  
**Survey Class** Class A  
**Survey Approval Date** 22/11/2023  
**Deposit Date**

---

## Territorial Authorities

Hurunui District

---

## Comprised In

RT 983584

---

## Created Parcels

Parcels	Parcel Intent	Area	RT Reference
Area AA Deposited Plan 587128	Covenant - Land		
Area AB Deposited Plan 587128	Covenant - Land		
Area AC Deposited Plan 587128	Covenant - Land		
Area AD Deposited Plan 587128	Covenant - Land		
Area AE Deposited Plan 587128	Covenant - Land		
Area AK Deposited Plan 587128	Covenant - Land		
Area AF Deposited Plan 587128	Covenant - Land		
Area AG Deposited Plan 587128	Covenant - Land		
Area AH Deposited Plan 587128	Covenant - Land		
Area AI Deposited Plan 587128	Covenant - Land		
Area AJ Deposited Plan 587128	Covenant - Land		
Area AL Deposited Plan 587128	Covenant - Land		
Area AM Deposited Plan 587128	Covenant - Land		
Area AN Deposited Plan 587128	Covenant - Land		
Area AO Deposited Plan 587128	Covenant - Land		
Area AP Deposited Plan 587128	Covenant - Land		
Area AQ Deposited Plan 587128	Covenant - Land		
Area AR Deposited Plan 587128	Covenant - Land		
Area AS Deposited Plan 587128	Covenant - Land		
Area AT Deposited Plan 587128	Covenant - Land		

# Title Plan - LT 587128

---

## Created Parcels

Parcels	Parcel Intent	Area	RT Reference
Area AU Deposited Plan 587128	Covenant - Land		
Area AV Deposited Plan 587128	Covenant - Land		
Area AW Deposited Plan 587128	Covenant - Land		
Area AX Deposited Plan 587128	Covenant - Land		
Area AY Deposited Plan 587128	Covenant - Land		
Area AZ Deposited Plan 587128	Covenant - Land		
Area BA Deposited Plan 587128	Covenant - Land		
Area BB Deposited Plan 587128	Covenant - Land		
Area BC Deposited Plan 587128	Covenant - Land		
Area BD Deposited Plan 587128	Covenant - Land		
Area BE Deposited Plan 587128	Covenant - Land		
Area BF Deposited Plan 587128	Covenant - Land		
Area BG Deposited Plan 587128	Covenant - Land		
Area BH Deposited Plan 587128	Covenant - Land		
Area BI Deposited Plan 587128	Covenant - Land		
Area BJ Deposited Plan 587128	Covenant - Land		
Area BK Deposited Plan 587128	Covenant - Land		
Area BL Deposited Plan 587128	Covenant - Land		
Area BM Deposited Plan 587128	Covenant - Land		
Area BN Deposited Plan 587128	Covenant - Land		
Area BO Deposited Plan 587128	Covenant - Land		
Area BP Deposited Plan 587128	Covenant - Land		
Area BQ Deposited Plan 587128	Covenant - Land		
Area BR Deposited Plan 587128	Covenant - Land		
Area BS Deposited Plan 587128	Covenant - Land		
Area BT Deposited Plan 587128	Covenant - Land		
Area BU Deposited Plan 587128	Covenant - Land		
Area BV Deposited Plan 587128	Covenant - Land		
Area BW Deposited Plan 587128	Covenant - Land		
Area BX Deposited Plan 587128	Covenant - Land		
Area BY Deposited Plan 587128	Covenant - Land		
Area BZ Deposited Plan 587128	Covenant - Land		
Area CA Deposited Plan 587128	Covenant - Land		
Area CB Deposited Plan 587128	Covenant - Land		
Area CC Deposited Plan 587128	Covenant - Land		
Area CD Deposited Plan 587128	Covenant - Land		
Area CE Deposited Plan 587128	Covenant - Land		
Area CF Deposited Plan 587128	Covenant - Land		
Area CG Deposited Plan 587128	Covenant - Land		
Area CH Deposited Plan 587128	Covenant - Land		
Area CI Deposited Plan 587128	Covenant - Land		
Area CJ Deposited Plan 587128	Covenant - Land		
Area CK Deposited Plan 587128	Covenant - Land		
Area CL Deposited Plan 587128	Covenant - Land		

# Title Plan - LT 587128

---

## Created Parcels

Parcels	Parcel Intent	Area	RT Reference
Area CM Deposited Plan 587128	Covenant - Land		
Area CN Deposited Plan 587128	Covenant - Land		
Area CO Deposited Plan 587128	Covenant - Land		
Area CP Deposited Plan 587128	Covenant - Land		
Area CQ Deposited Plan 587128	Covenant - Land		
Area CR Deposited Plan 587128	Covenant - Land		
Area CS Deposited Plan 587128	Covenant - Land		
Area CT Deposited Plan 587128	Covenant - Land		
Area CU Deposited Plan 587128	Covenant - Land		
Area CV Deposited Plan 587128	Covenant - Land		
Area CW Deposited Plan 587128	Covenant - Land		
Area CX Deposited Plan 587128	Covenant - Land		
Area CY Deposited Plan 587128	Covenant - Land		
Area CZ Deposited Plan 587128	Covenant - Land		
Area DA Deposited Plan 587128	Covenant - Land		
Area DB Deposited Plan 587128	Covenant - Land		
Area DC Deposited Plan 587128	Covenant - Land		
Area DD Deposited Plan 587128	Covenant - Land		
Area DE Deposited Plan 587128	Covenant - Land		
Area DF Deposited Plan 587128	Covenant - Land		
Area DG Deposited Plan 587128	Covenant - Land		
Area DH Deposited Plan 587128	Covenant - Land		
Area DI Deposited Plan 587128	Covenant - Land		
Area DJ Deposited Plan 587128	Covenant - Land		
Area DK Deposited Plan 587128	Covenant - Land		
Area DL Deposited Plan 587128	Covenant - Land		
Area DM Deposited Plan 587128	Covenant - Land		
Area DN Deposited Plan 587128	Covenant - Land		
Area DO Deposited Plan 587128	Covenant - Land		
Area DP Deposited Plan 587128	Covenant - Land		
Area DQ Deposited Plan 587128	Covenant - Land		
Area DR Deposited Plan 587128	Covenant - Land		
Area DS Deposited Plan 587128	Covenant - Land		
Area DT Deposited Plan 587128	Covenant - Land		
Area DU Deposited Plan 587128	Covenant - Land		
Area DV Deposited Plan 587128	Covenant - Land		
Area DW Deposited Plan 587128	Covenant - Land		
Area DX Deposited Plan 587128	Covenant - Land		
Area DY Deposited Plan 587128	Covenant - Land		
Area DZ Deposited Plan 587128	Covenant - Land		
Lot 1 Deposited Plan 587128	Fee Simple Title	0.1293 Ha	1112897
Lot 2 Deposited Plan 587128	Fee Simple Title	0.0720 Ha	1112898
Lot 3 Deposited Plan 587128	Fee Simple Title	0.0742 Ha	1112899
Lot 4 Deposited Plan 587128	Fee Simple Title	0.1305 Ha	1112900

# Title Plan - LT 587128

---

## Created Parcels

Parcels	Parcel Intent	Area	RT Reference
Lot 5 Deposited Plan 587128	Fee Simple Title	0.1295 Ha	1112901
Lot 6 Deposited Plan 587128	Fee Simple Title	0.1303 Ha	1112902
Lot 7 Deposited Plan 587128	Fee Simple Title	0.1372 Ha	1112903
Lot 8 Deposited Plan 587128	Fee Simple Title	0.0709 Ha	1112904
Lot 9 Deposited Plan 587128	Fee Simple Title	0.0700 Ha	1112905
Lot 10 Deposited Plan 587128	Fee Simple Title	0.0700 Ha	1112906
Lot 11 Deposited Plan 587128	Fee Simple Title	0.1102 Ha	1112907
Lot 12 Deposited Plan 587128	Fee Simple Title	0.0699 Ha	1112908
Lot 13 Deposited Plan 587128	Fee Simple Title	0.0699 Ha	1112909
Lot 14 Deposited Plan 587128	Fee Simple Title	0.0699 Ha	1112910
Lot 15 Deposited Plan 587128	Fee Simple Title	0.0699 Ha	1112911
Lot 16 Deposited Plan 587128	Fee Simple Title	0.1146 Ha	1112912
Lot 17 Deposited Plan 587128	Fee Simple Title	0.1107 Ha	1112913
Area EA Deposited Plan 587128	Covenant - Land		
Area EB Deposited Plan 587128	Covenant - Land		
Area EC Deposited Plan 587128	Covenant - Land		
Area ED Deposited Plan 587128	Covenant - Land		
Area EE Deposited Plan 587128	Covenant - Land		
Area EF Deposited Plan 587128	Covenant - Land		
Area EG Deposited Plan 587128	Covenant - Land		
Area EH Deposited Plan 587128	Covenant - Land		
Area EI Deposited Plan 587128	Covenant - Land		
Area EJ Deposited Plan 587128	Covenant - Land		
Area EK Deposited Plan 587128	Covenant - Land		
Area EL Deposited Plan 587128	Covenant - Land		
Area EM Deposited Plan 587128	Covenant - Land		
Lot 18 Deposited Plan 587128	Fee Simple Title	0.1099 Ha	1112914
Lot 19 Deposited Plan 587128	Fee Simple Title	0.1101 Ha	1112915
Lot 20 Deposited Plan 587128	Fee Simple Title	0.1100 Ha	1112916
Lot 21 Deposited Plan 587128	Fee Simple Title	0.1099 Ha	1112917
Lot 22 Deposited Plan 587128	Fee Simple Title	0.1099 Ha	1112918
Lot 23 Deposited Plan 587128	Fee Simple Title	0.0701 Ha	1112919
Lot 24 Deposited Plan 587128	Fee Simple Title	0.0700 Ha	1112920
Lot 25 Deposited Plan 587128	Fee Simple Title	0.1187 Ha	1112921
Lot 26 Deposited Plan 587128	Fee Simple Title	0.1196 Ha	1112922
Lot 27 Deposited Plan 587128	Fee Simple Title	0.0783 Ha	1112923
Lot 28 Deposited Plan 587128	Fee Simple Title	0.0947 Ha	1112924
Lot 29 Deposited Plan 587128	Fee Simple Title	0.1197 Ha	1112925
Lot 30 Deposited Plan 587128	Fee Simple Title	0.1114 Ha	1112926
Area EN Deposited Plan 587128	Covenant - Land		
Area EO Deposited Plan 587128	Covenant - Land		
Area EP Deposited Plan 587128	Covenant - Land		
Area EQ Deposited Plan 587128	Covenant - Land		
Area ER Deposited Plan 587128	Covenant - Land		

# Title Plan - LT 587128

---

## Created Parcels

Parcels	Parcel Intent	Area	RT Reference
Lot 31 Deposited Plan 587128	Fee Simple Title	0.1126 Ha	1112927
Lot 32 Deposited Plan 587128	Fee Simple Title	0.0716 Ha	1112928
Lot 33 Deposited Plan 587128	Fee Simple Title	0.0719 Ha	1112929
Lot 34 Deposited Plan 587128	Fee Simple Title	0.0703 Ha	1112930
Lot 35 Deposited Plan 587128	Fee Simple Title	0.0699 Ha	1112931
Lot 36 Deposited Plan 587128	Fee Simple Title	0.0421 Ha	1112932
Lot 37 Deposited Plan 587128	Fee Simple Title	0.0464 Ha	1112933
Lot 38 Deposited Plan 587128	Fee Simple Title	0.0710 Ha	1112934
Lot 39 Deposited Plan 587128	Fee Simple Title	0.0700 Ha	1112935
Lot 40 Deposited Plan 587128	Fee Simple Title	0.0700 Ha	1112936
Area ES Deposited Plan 587128	Covenant - Land		
Lot 41 Deposited Plan 587128	Fee Simple Title	0.0700 Ha	1112937
Lot 42 Deposited Plan 587128	Fee Simple Title	0.0411 Ha	1112938
Lot 43 Deposited Plan 587128	Fee Simple Title	0.0410 Ha	1112939
Lot 44 Deposited Plan 587128	Fee Simple Title	0.0410 Ha	1112940
Lot 45 Deposited Plan 587128	Fee Simple Title	0.0410 Ha	1112941
Lot 46 Deposited Plan 587128	Fee Simple Title	0.0412 Ha	1112942
Lot 47 Deposited Plan 587128	Fee Simple Title	0.0436 Ha	1112943
Lot 48 Deposited Plan 587128	Fee Simple Title	0.0446 Ha	1112944
Lot 49 Deposited Plan 587128	Fee Simple Title	0.0425 Ha	1112945
Lot 50 Deposited Plan 587128	Fee Simple Title	0.0400 Ha	1112946
Lot 51 Deposited Plan 587128	Fee Simple Title	0.0407 Ha	1112947
Lot 52 Deposited Plan 587128	Fee Simple Title	0.0401 Ha	1112948
Lot 53 Deposited Plan 587128	Fee Simple Title	0.0401 Ha	1112949
Lot 54 Deposited Plan 587128	Fee Simple Title	0.0401 Ha	1112950
Lot 55 Deposited Plan 587128	Fee Simple Title	0.0424 Ha	1112951
Lot 56 Deposited Plan 587128	Fee Simple Title	0.0474 Ha	1112952
Lot 57 Deposited Plan 587128	Fee Simple Title	0.0471 Ha	1112953
Lot 58 Deposited Plan 587128	Fee Simple Title	0.0701 Ha	1112954
Lot 59 Deposited Plan 587128	Fee Simple Title	0.0701 Ha	1112955
Lot 60 Deposited Plan 587128	Fee Simple Title	0.0703 Ha	1112956
Lot 61 Deposited Plan 587128	Fee Simple Title	0.0700 Ha	1112957
Lot 62 Deposited Plan 587128	Fee Simple Title	0.0700 Ha	1112958
Lot 63 Deposited Plan 587128	Fee Simple Title	0.0701 Ha	1112959
Lot 64 Deposited Plan 587128	Fee Simple Title	0.0523 Ha	1112960
Lot 65 Deposited Plan 587128	Fee Simple Title	0.0529 Ha	1112961
Lot 66 Deposited Plan 587128	Fee Simple Title	0.1277 Ha	1112962
Lot 67 Deposited Plan 587128	Fee Simple Title	0.1186 Ha	1112963
Lot 68 Deposited Plan 587128	Fee Simple Title	0.0725 Ha	1112964
Lot 69 Deposited Plan 587128	Fee Simple Title	0.0765 Ha	1112965
Lot 70 Deposited Plan 587128	Fee Simple Title	0.0740 Ha	1112966
Lot 71 Deposited Plan 587128	Fee Simple Title	0.1217 Ha	1112967
Lot 72 Deposited Plan 587128	Fee Simple Title	0.1189 Ha	1112968
Lot 73 Deposited Plan 587128	Fee Simple Title	0.0439 Ha	1112969

# Title Plan - LT 587128

---

## Created Parcels

Parcels	Parcel Intent	Area	RT Reference
Lot 74 Deposited Plan 587128	Fee Simple Title	0.0430 Ha	1112970
Lot 75 Deposited Plan 587128	Fee Simple Title	0.0407 Ha	1112971
Lot 76 Deposited Plan 587128	Fee Simple Title	0.0711 Ha	1112972
Lot 77 Deposited Plan 587128	Fee Simple Title	0.0706 Ha	1112973
Lot 78 Deposited Plan 587128	Fee Simple Title	0.0707 Ha	1112974
Lot 79 Deposited Plan 587128	Fee Simple Title	0.0700 Ha	1112975
Lot 80 Deposited Plan 587128	Fee Simple Title	0.1238 Ha	1112976
Lot 81 Deposited Plan 587128	Fee Simple Title	0.1100 Ha	1112977
Lot 82 Deposited Plan 587128	Fee Simple Title	0.1125 Ha	1112978
Lot 83 Deposited Plan 587128	Fee Simple Title	0.0716 Ha	1112979
Lot 84 Deposited Plan 587128	Fee Simple Title	0.0703 Ha	1112980
Lot 85 Deposited Plan 587128	Fee Simple Title	0.0755 Ha	1112981
Lot 86 Deposited Plan 587128	Fee Simple Title	0.0581 Ha	1112982
Lot 87 Deposited Plan 587128	Fee Simple Title	0.0472 Ha	1112983
Lot 88 Deposited Plan 587128	Fee Simple Title	0.0499 Ha	1112984
Lot 89 Deposited Plan 587128	Fee Simple Title	0.0524 Ha	1112985
Lot 90 Deposited Plan 587128	Fee Simple Title	0.0705 Ha	1112986
Lot 91 Deposited Plan 587128	Fee Simple Title	0.0700 Ha	1112987
Lot 92 Deposited Plan 587128	Fee Simple Title	0.0731 Ha	1112988
Lot 93 Deposited Plan 587128	Fee Simple Title	0.0702 Ha	1112989
Lot 94 Deposited Plan 587128	Fee Simple Title	0.0704 Ha	1112990
Lot 95 Deposited Plan 587128	Fee Simple Title	0.0703 Ha	1112991
Lot 96 Deposited Plan 587128	Fee Simple Title	0.0708 Ha	1112992
Lot 97 Deposited Plan 587128	Fee Simple Title	0.0702 Ha	1112993
Lot 98 Deposited Plan 587128	Fee Simple Title	0.0800 Ha	1112994
Lot 99 Deposited Plan 587128	Fee Simple Title	0.0598 Ha	1112995
Lot 100 Deposited Plan 587128	Fee Simple Title	0.0400 Ha	1112996
Lot 101 Deposited Plan 587128	Fee Simple Title	0.0471 Ha	1112997
Lot 102 Deposited Plan 587128	Fee Simple Title	0.0460 Ha	1112998
Lot 103 Deposited Plan 587128	Fee Simple Title	0.0500 Ha	1112999
Lot 104 Deposited Plan 587128	Fee Simple Title	0.0747 Ha	1113000
Lot 105 Deposited Plan 587128	Fee Simple Title	0.0706 Ha	1113001
Lot 106 Deposited Plan 587128	Fee Simple Title	0.0701 Ha	1113002
Lot 107 Deposited Plan 587128	Fee Simple Title	0.0517 Ha	1113003
Lot 108 Deposited Plan 587128	Fee Simple Title	0.0535 Ha	1113004
Lot 109 Deposited Plan 587128	Fee Simple Title	0.0535 Ha	1113005
Lot 110 Deposited Plan 587128	Fee Simple Title	0.0535 Ha	1113006
Lot 111 Deposited Plan 587128	Fee Simple Title	0.0535 Ha	1113007
Lot 112 Deposited Plan 587128	Fee Simple Title	0.0530 Ha	1113008
Lot 113 Deposited Plan 587128	Fee Simple Title	0.1169 Ha	1113009
Lot 114 Deposited Plan 587128	Fee Simple Title	0.1177 Ha	1113010
Lot 115 Deposited Plan 587128	Fee Simple Title	0.1103 Ha	1113011
Lot 116 Deposited Plan 587128	Fee Simple Title	0.1100 Ha	1113012
Lot 117 Deposited Plan 587128	Fee Simple Title	0.1101 Ha	1113013

# Title Plan - LT 587128

---

## Created Parcels

Parcels	Parcel Intent	Area	RT Reference
Lot 118 Deposited Plan 587128	Fee Simple Title	0.1164 Ha	1113014
Lot 119 Deposited Plan 587128	Fee Simple Title	0.0728 Ha	1113015
Lot 120 Deposited Plan 587128	Fee Simple Title	0.0463 Ha	1113016
Lot 121 Deposited Plan 587128	Fee Simple Title	0.0453 Ha	1113017
Lot 122 Deposited Plan 587128	Fee Simple Title	0.0452 Ha	1113018
Lot 123 Deposited Plan 587128	Fee Simple Title	0.0700 Ha	1113019
Lot 600 Deposited Plan 587128	Fee Simple Title	0.0766 Ha	Multiple
Lot 601 Deposited Plan 587128	Fee Simple Title	0.0565 Ha	Multiple
Lot 1000 Deposited Plan 587128	Vesting on Deposit for Road	1.2659 Ha	
Lot 1001 Deposited Plan 587128	Vesting on Deposit for Road	0.7667 Ha	
Lot 3000 Deposited Plan 587128	Vesting on Deposit for Local Purpose Reserve	0.0488 Ha	
Lot 3001 Deposited Plan 587128	Vesting on Deposit for Local Purpose Reserve	1.3222 Ha	
Lot 3002 Deposited Plan 587128	Vesting on Deposit for Local Purpose Reserve	0.0714 Ha	
Lot 3003 Deposited Plan 587128	Vesting on Deposit for Local Purpose Reserve	0.0351 Ha	
Lot 4000 Deposited Plan 587128	Fee Simple Title	4.8648 Ha	1113020
Area A Deposited Plan 587128	Easement		
Area B Deposited Plan 587128	Easement		
Area C Deposited Plan 587128	Easement		
Area D Deposited Plan 587128	Easement		
Area E Deposited Plan 587128	Easement		
Area F Deposited Plan 587128	Easement		
Area G Deposited Plan 587128	Easement		
Area H Deposited Plan 587128	Easement		
Area I Deposited Plan 587128	Easement		
Area J Deposited Plan 587128	Easement		
Area K Deposited Plan 587128	Easement		
Area L Deposited Plan 587128	Easement		
Area M Deposited Plan 587128	Easement		
Area N Deposited Plan 587128	Easement		
Area O Deposited Plan 587128	Easement		
Area P Deposited Plan 587128	Covenant - Land		
Area Q Deposited Plan 587128	Covenant - Land		
Area R Deposited Plan 587128	Easement		
Area S Deposited Plan 587128	Easement		
Area Z Deposited Plan 587128	Easement		
Area T Deposited Plan 587128	Covenant - Land		
Area U Deposited Plan 587128	Covenant - Land		
Area V Deposited Plan 587128	Covenant - Land		



# Title Plan - LT 587128

---

## Created Parcels

Parcels	Parcel Intent	Area	RT Reference
Area W Deposited Plan 587128	Covenant - Land		
Area X Deposited Plan 587128	Covenant - Land		
Area Y Deposited Plan 587128	Covenant - Land		
<b>Total Area</b>		<hr/> 17.7095 Ha	



**DAVIS OGILVIE & PARTNERS LIMITED**  
 Level 1, 24 Moorhouse Avenue, Addington  
 PO Box 589, Christchurch 8140  
 0800 999 333 03 366 1653 hello@do.nz  
 Offices in Christchurch, Timaru, Nelson & Greymouth. [www.do.nz](http://www.do.nz)



**DP 587128**

<b>Memorandum of Easements</b>			
<b>Purpose</b>	<b>Shown</b>	<b>Burdened Land</b>	<b>Benefited Land</b>
RIGHT OF WAY, RIGHT TO DRAIN SEWAGE & WATER, RIGHT TO CONVEY WATER, ELECTRICITY & TELECOMMUNICATIONS.	A	Lot 25	Lot 26
	B	Lot 26	Lot 25
	C	Lot 66	Lot 67
	D	Lot 67	Lot 66
	E	Lot 71	Lot 72
	F	Lot 72	Lot 71
	G	Lot 98	Lot 99
	H	Lot 99	Lot 98
	I	Lot 113	Lot 114
	J	Lot 114	Lot 113
	K	Lot 600	Lot 29 - 34
	L	Lot 601	Lot 80 - 83
RIGHT OF WAY	M	Lot 118	Lot 119
RIGHT TO DRAIN WATER	N	Lot 76	Lot 72
	O	Lot 80	
RIGHT TO DRAIN SEWAGE	Z	Lot 64	Lot 1 DP 490410

<b>Memorandum of Easements in Gross</b>			
<b>Purpose</b>	<b>Shown</b>	<b>Burdened Land</b>	<b>Grantee</b>
RIGHT TO DRAIN SEWAGE	K	Lot 600	HURUNUI DISTRICT COUNCIL
	L	Lot 601	
RIGHT TO DRAIN WATER	N	Lot 76	
	O	Lot 80	
RIGHT TO DRAIN SEWAGE	R	Lot 4000	
RIGHT OF WAY	K	Lot 600	
RIGHT TO CONVEY TELECOMMUNICATIONS IN GROSS	A	Lot 25	CHORUS NEW ZEALAND LIMITED
	B	Lot 26	
	C	Lot 66	
	D	Lot 67	
	E	Lot 71	
	F	Lot 72	
	G	Lot 98	
	H	Lot 99	
	I	Lot 113	
	J	Lot 114	
	K	Lot 600	
	L	Lot 601	
	S	Lot 3000	

<b>Memorandum of Easements in Gross</b>			
<b>Purpose</b>	<b>Shown</b>	<b>Burdened Land</b>	<b>Grantee</b>
RIGHT TO CONVEY ELECTRICITY IN GROSS	K	Lot 600	MAIN POWER NEW ZEALAND LIMITED
	L	Lot 601	
	S	Lot 3000	

**Amalgamation Condition:**

That Lot 600 DP 587128 (Legal Access) be held as six undivided one-sixth shares by the owners of Lots 29, 30, 31, 32, 33, and 34 DP 587128 hereon as tenants in common in the said shares and that individual Records of Title issued in accordance therewith.

That Lot 601 DP 587128 (Legal Access) be held as four undivided one-quarter shares by the owners of Lots 80, 81, 82, and 83 DP 587128 as tenants in common in the said shares and that individual Records of Title issued in accordance therewith.

LINZ Reference is **1766703**

**Notes:**

Existing Easement by EI 10311979.2, shown on DP 559093 as ZA is to be cancelled.

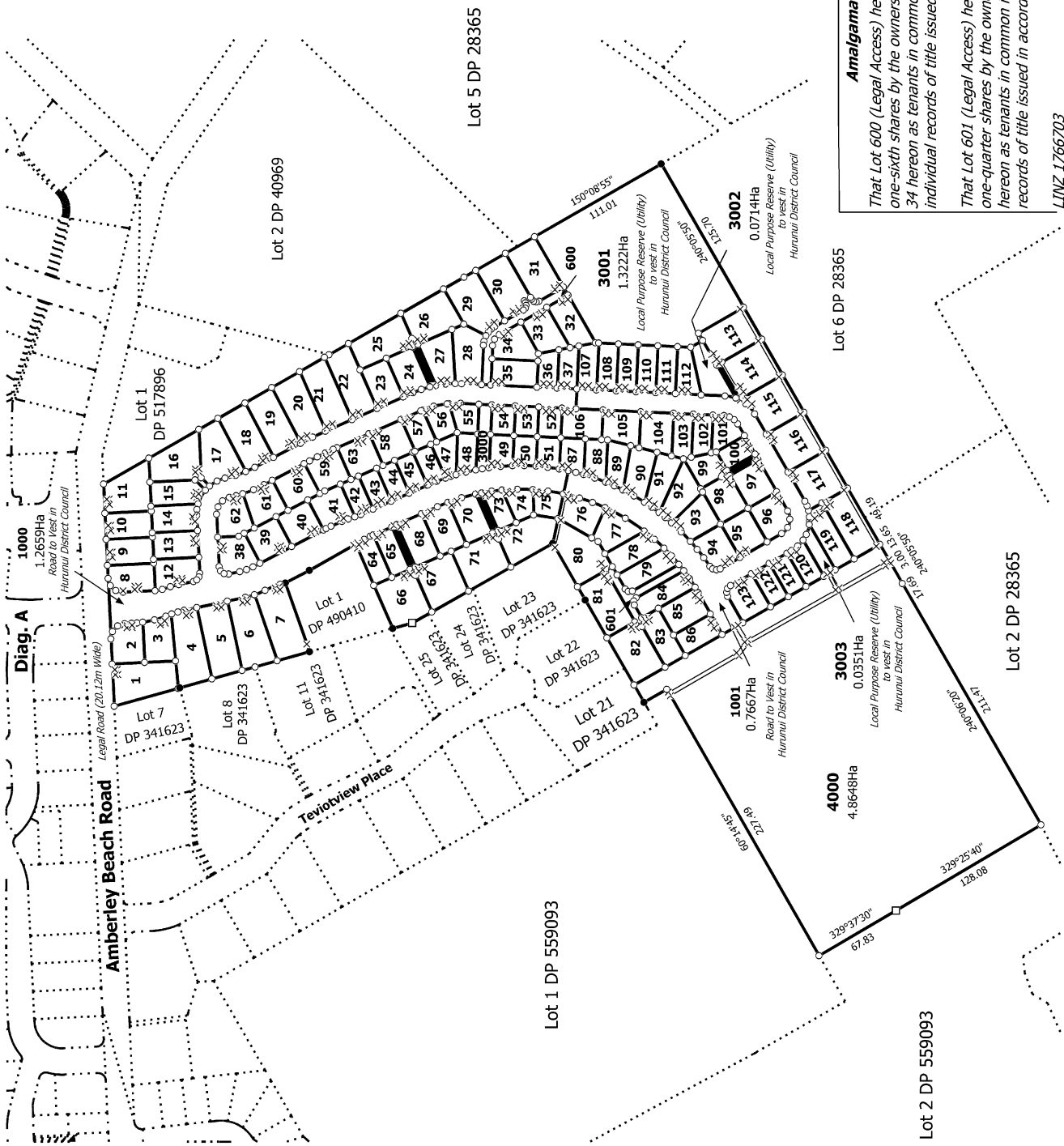
Existing Easement by EI 10311979.2, shown on DP 559093 as ZB is to be cancelled.

Existing Easement by EI 10311979.2, shown on DP 559093 as ZC is to be cancelled and area Z created.

Existing easement in gross by T.386795.1 shown on DP 559093 as C is to be cancelled.

Areas P & Q, AA – ES are private Land Covenant areas.

Areas T – Y are Consent Notice Areas.



**Amalgamation Conditions**

That Lot 600 (Legal Access) hereon be held as six undivided one-sixth shares by the owners of Lots 29, 30, 31, 32, 33, and 34 hereon as tenants in common in the said shares and that individual records of title issued in accordance therewith.

That Lot 601 (Legal Access) hereon be held as four undivided one-quarter shares by the owners of Lots 80, 81, 82, and 83 hereon as tenants in common in the said shares and that individual records of title issued in accordance therewith.

LJNZ 1766703

Land District: Canterbury

**Digitally Generated Plan**

Generated on: 22/11/2023 2:57pm Page 12 of 33

Surveyor: Christopher Paul Hopper

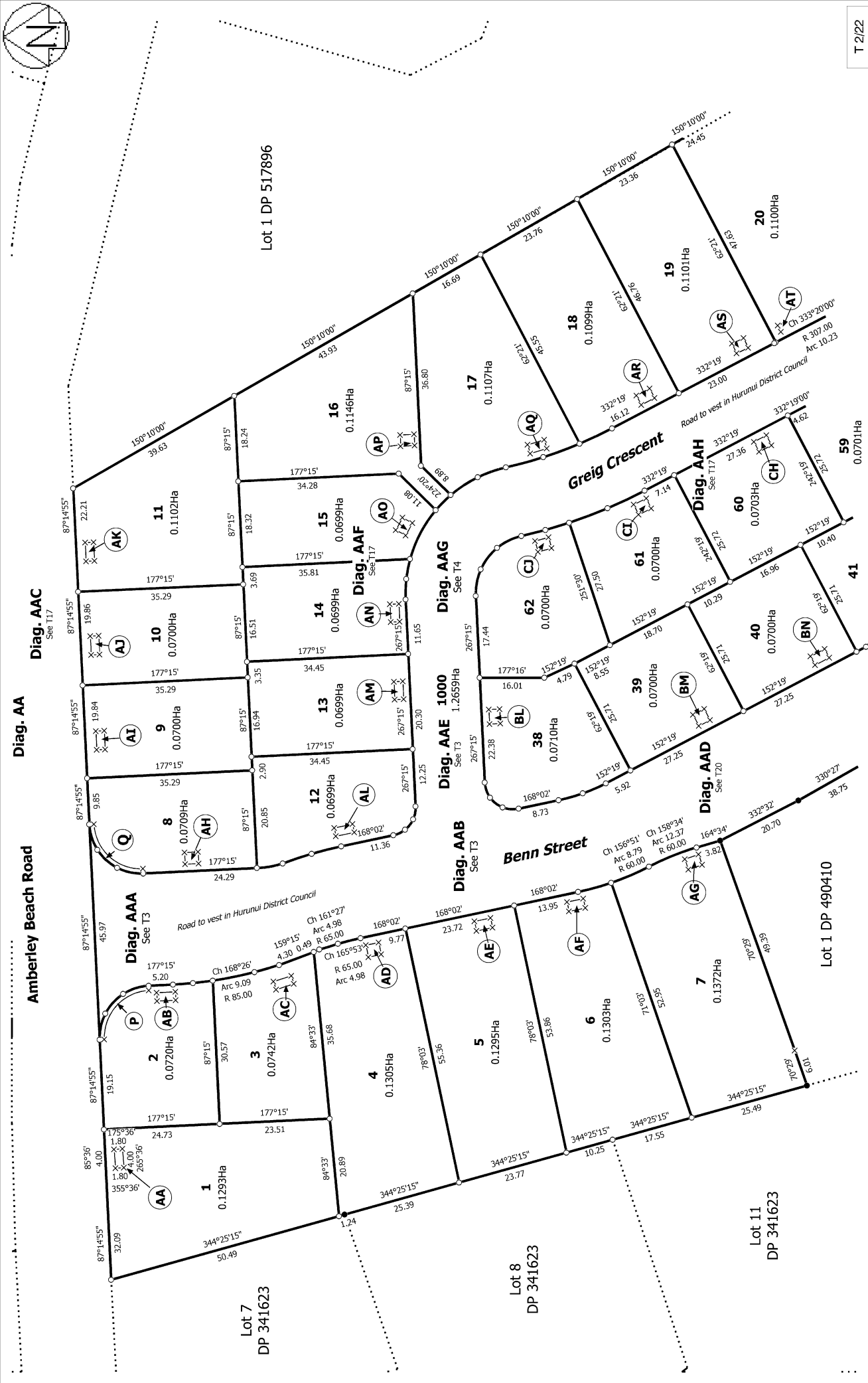
Firm: Davis Ogilvie & Partners Ltd (Christchurch)

**Title Plan**

LT 587128

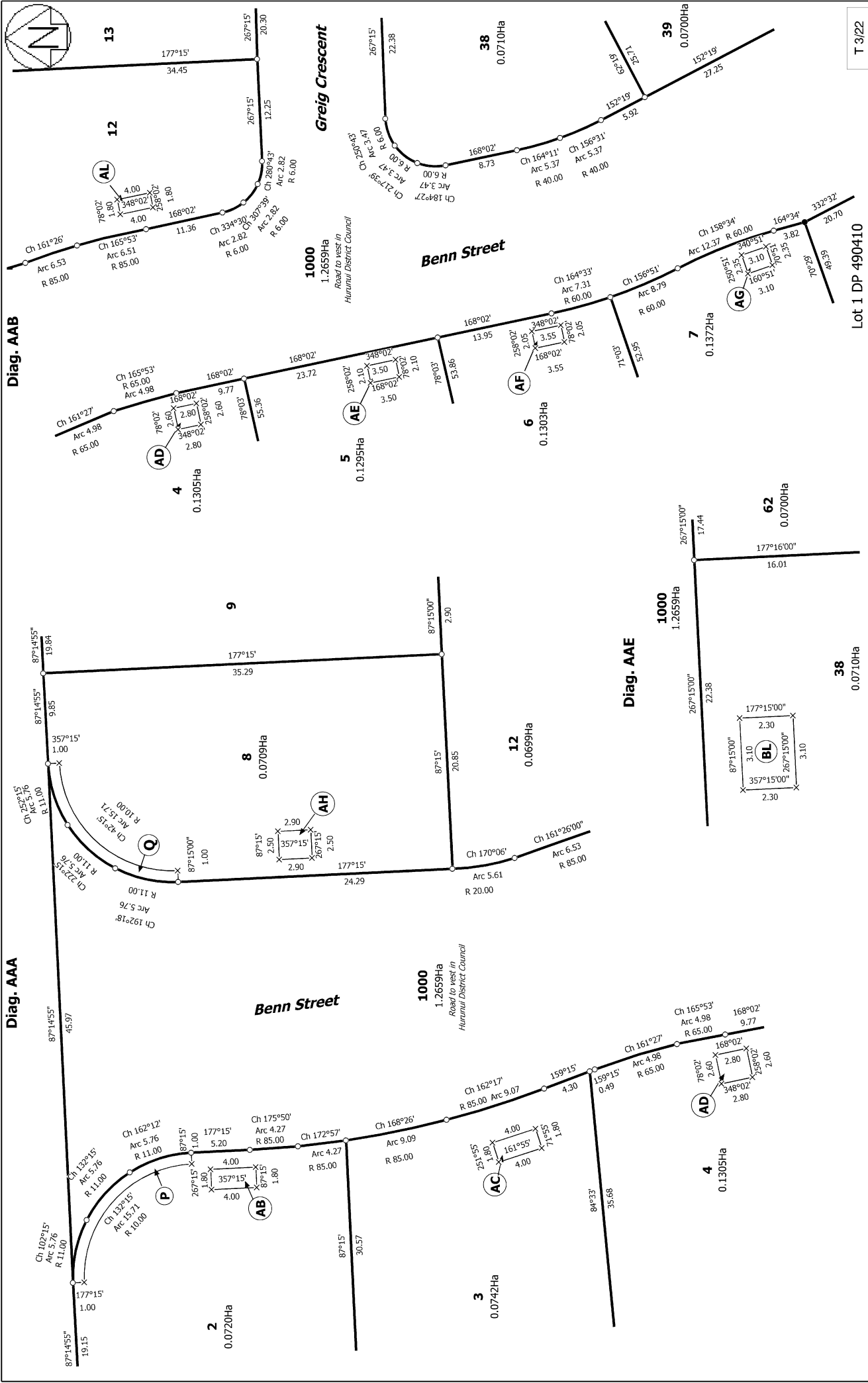
Approved on: 22/11/2023

LOTS 1 - 123, 600, 601, 1000, 1001, 3000 - 3003 & 4000 BEING A SUBDIVISION OF LOT 3 DP 559093



T 2/22

<p>Land District: Canterbury</p> <p><b>Digitally Generated Plan</b></p> <p>Generated on: 22/11/2023 2:57pm Page 13 of 33</p>	<p><b>LOTS 1 - 123, 600, 601, 1000, 1001, 3000 - 3003 &amp; 4000 BEING A SUBDIVISION OF LOT 3 DP 559093</b></p>	<p>Surveyor: Christopher Paul Hopper</p> <p>Firm: Davis Ogilvie &amp; Partners Ltd (Christcl)</p>	<p><b>Title Plan</b></p> <p><b>LT 587128</b></p> <p>Approved on: 22/11/2023</p>
--	---	---	---



T 3/22

Lot 1 DP 490410

Land District: Canterbury

LOTS 1 - 123, 600, 601, 1000, 1001, 3000 - 3003 & 4000 BEING A  
SUBDIVISION OF LOT 3 DP 559093

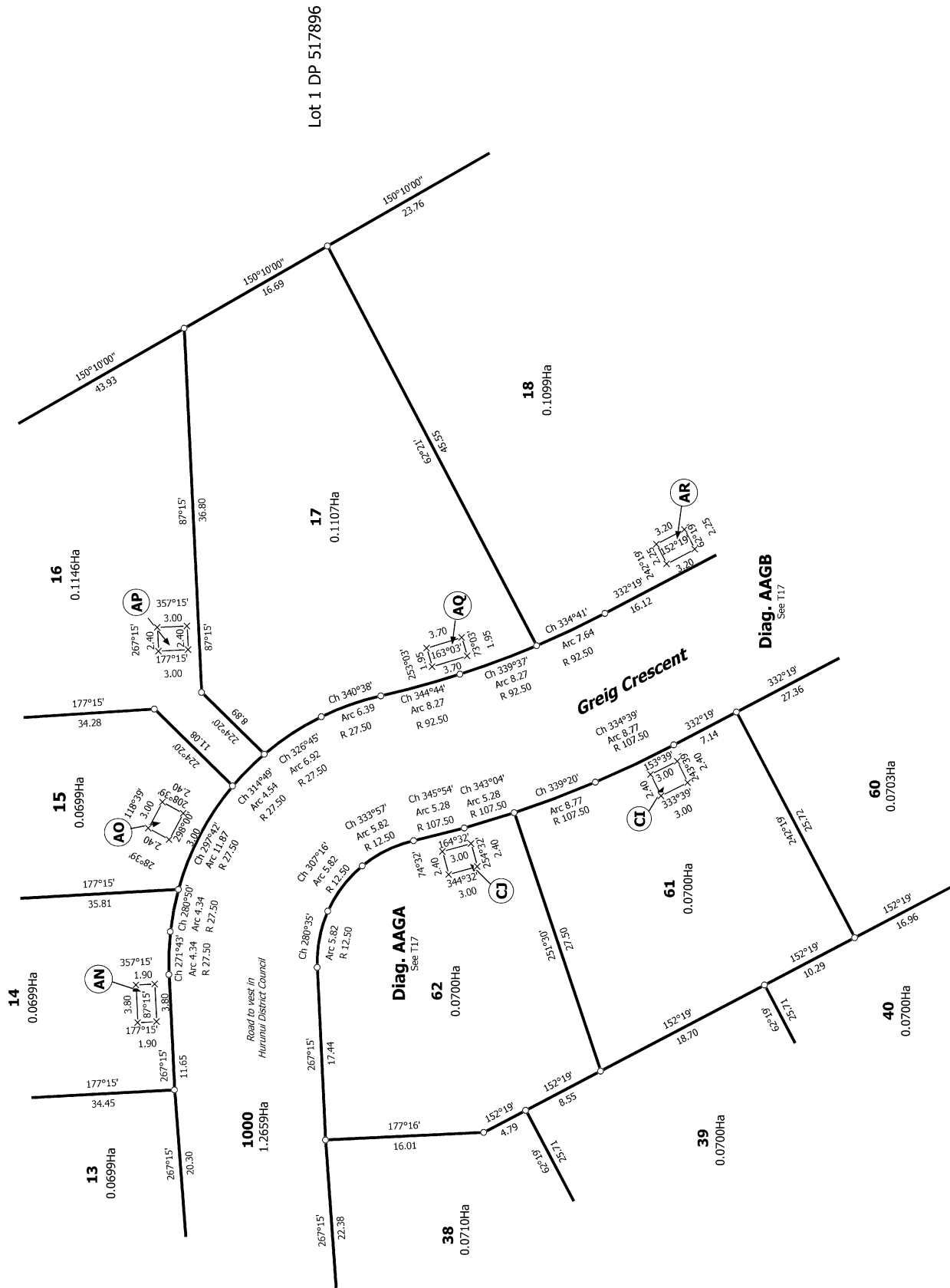
Surveyor: Christopher Paul Hopper  
Firm: Davis Ogilvie & Partners Ltd (Christcl)

Title Plan  
LT 587128  
Approved on: 22/11/2023

Digitally Generated Plan  
Generated on: 22/11/2023 2:57pm Page 14 of 33



Diag. AAG



T 4/22

Land District: Canterbury

Digitally Generated Plan

Generated on: 22/11/2023 2:57pm Page 15 of 33

LOTS 1 - 123, 600, 601, 1000, 1001, 3000 - 3003 & 4000 BEING A SUBDIVISION OF LOT 3 DP 559093

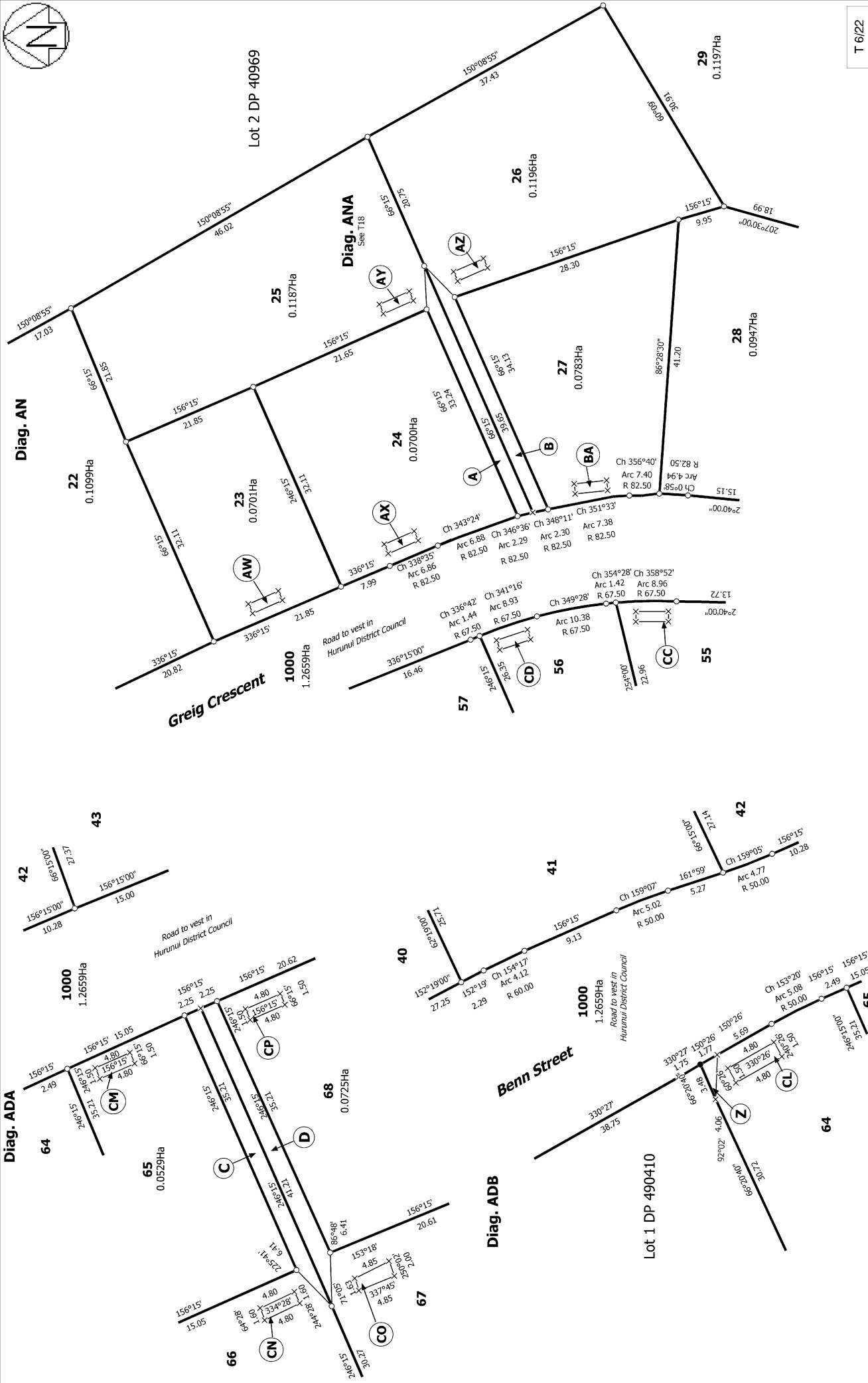
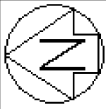
Surveyor: Christopher Paul Hopper  
Firm: Davis Ogilvie & Partners Ltd (Christcl)

Title Plan  
LT 587128  
Approved on: 22/11/2023



T 5/22	Title Plan LT 587128 Approved on: 22/11/2023
Surveyor: Christopher Paul Hopper Firm: Davis Ogilvie & Partners Ltd (Christchurch)	LOTS 1 - 123, 600, 601, 1000, 1001, 3000 - 3003 & 4000 BEING A SUBDIVISION OF LOT 3 DP 559093
Land District: Canterbury	Digitally Generated Plan Generated on: 22/11/2023 2:57pm Page 16 of 33





T 6/22

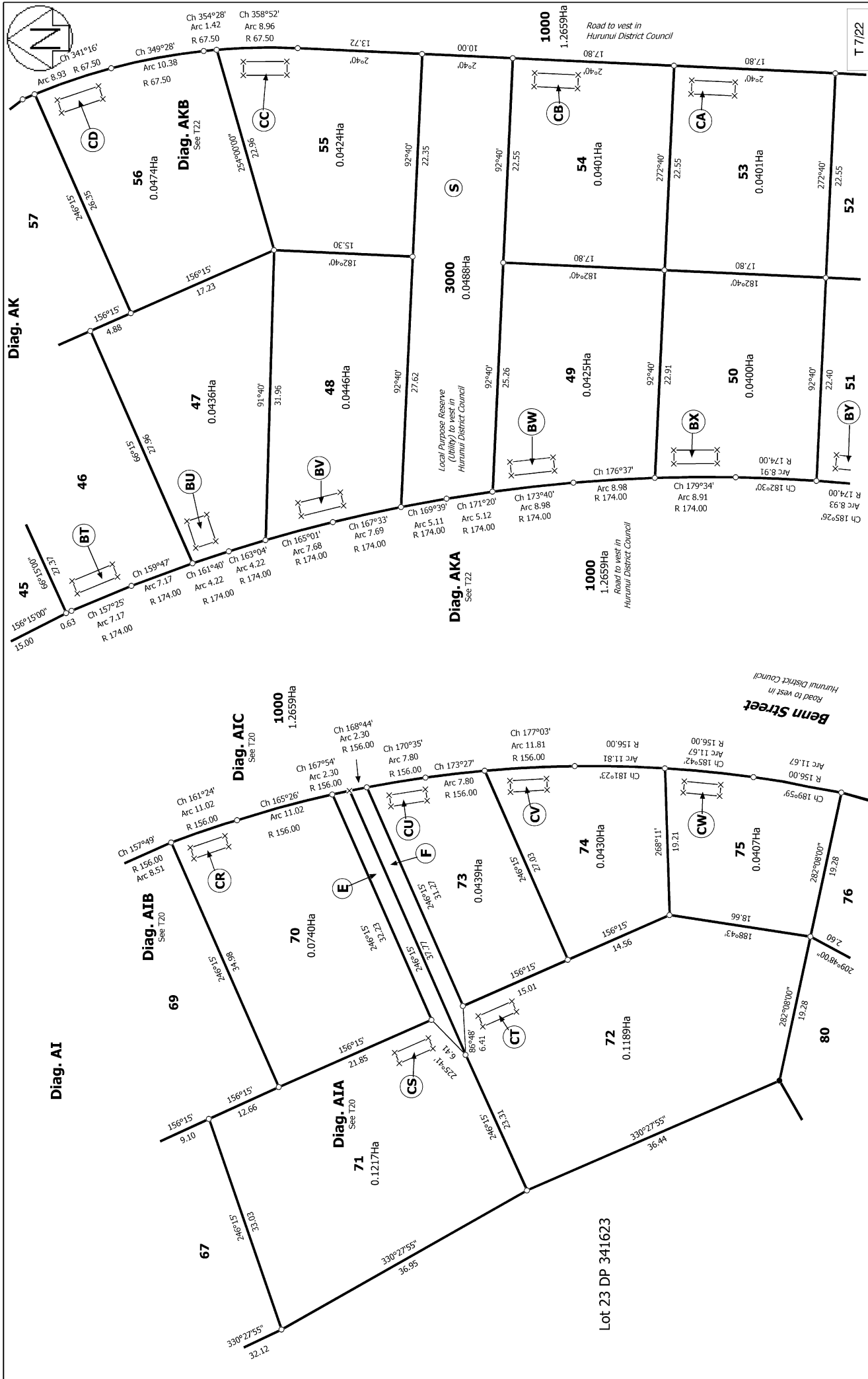
Land District: Canterbury

**Digitally Generated Plan**  
 Generated on: 22/11/2023 2:57pm Page: 17 of 33

Surveyor: Christopher Paul Hopper  
 Firm: Davis Ogilvie & Partners Ltd (Christchurch)

**LOTS 1 - 123, 600, 601, 1000, 1001, 3000 - 3003 & 4000 BEING A SUBDIVISION OF LOT 3 DP 559093**

**Title Plan**  
 LT 587128  
 Approved on: 22/11/2023



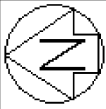
Land District: Canterbury

**Digitally Generated Plan**  
Generated on: 22/11/2023 2:57pm Page 18 of 33

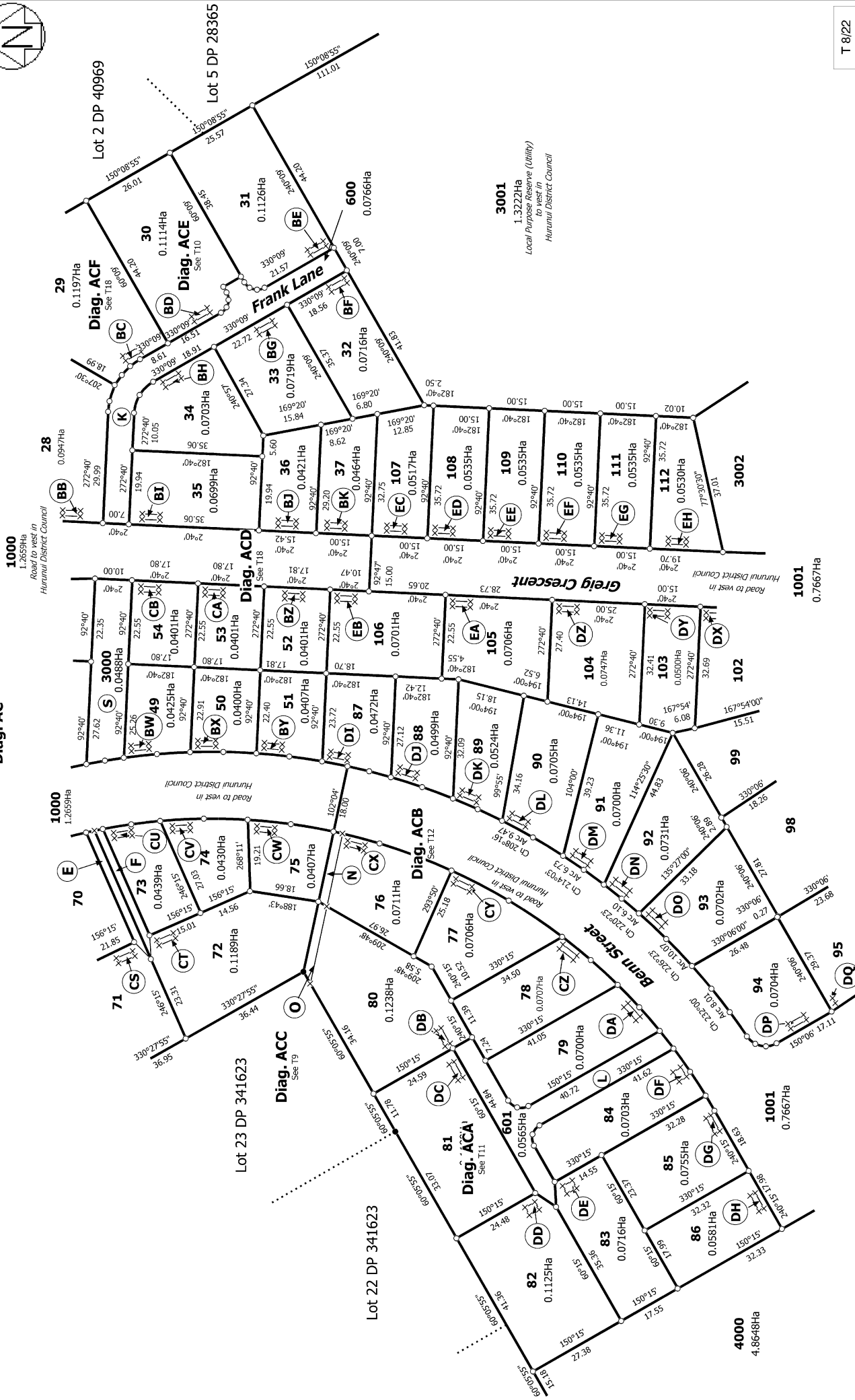
**LOTS 1 - 123, 600, 601, 1000, 1001, 3000 - 3003 & 4000 BEING A SUBDIVISION OF LOT 3 DP 559093**

Surveyor: Christopher Paul Hopper  
Firm: Davis Ogilvie & Partners Ltd (Christchurch)

**Title Plan**  
**LT 587128**  
Approved on: 22/11/2023



Diag. AC



**3001**  
1.3222Ha  
Local Purpose Reserve (Utility)  
to vest in  
Hurunui District Council

T 8/22

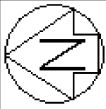
Land District: Canterbury

**Digitally Generated Plan**  
Generated on: 22/11/2023 2:57pm Page 19 of 33

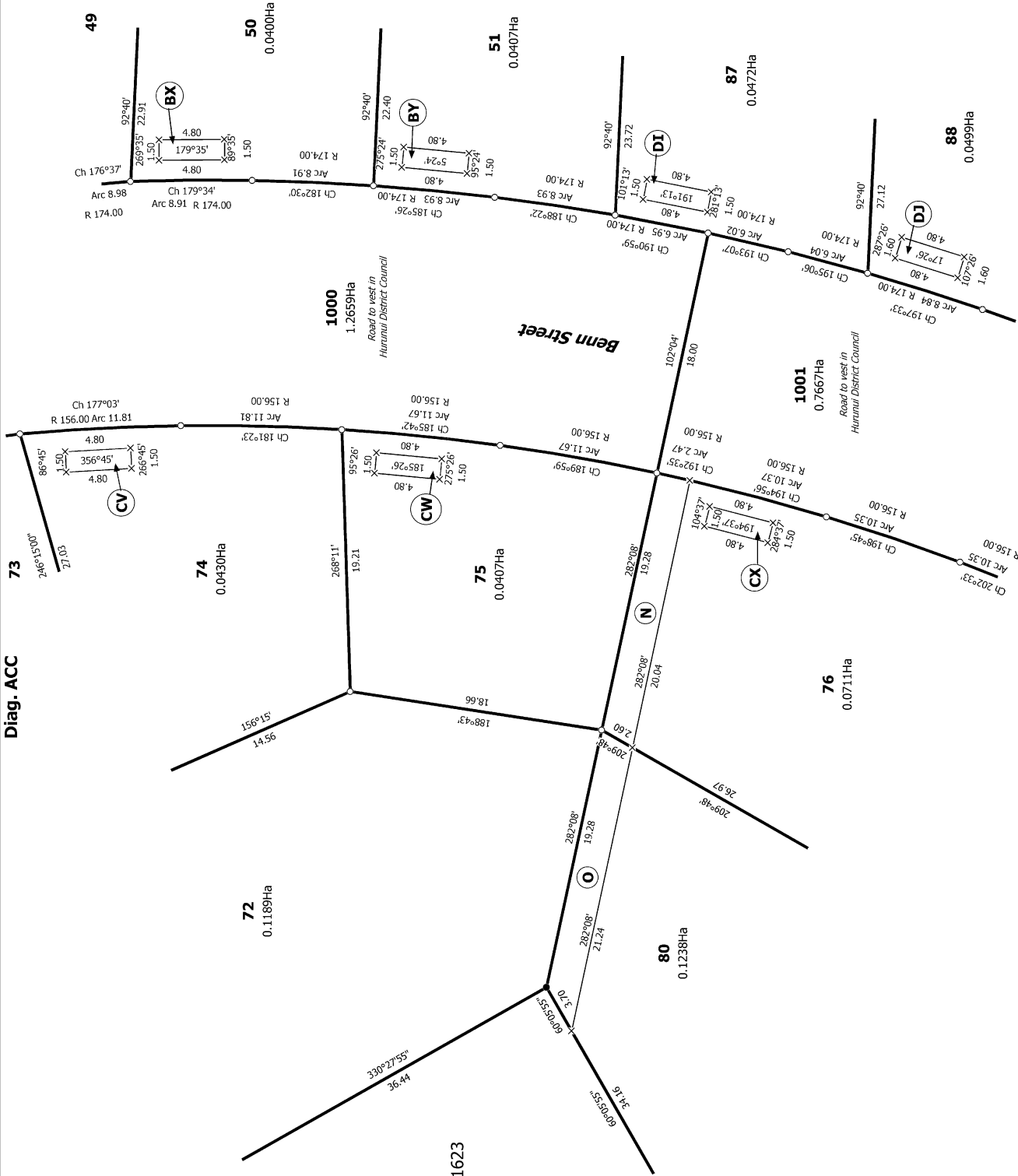
**LOTS 1 - 123, 600, 601, 1000, 1001, 3000 - 3003 & 4000 BEING A  
SUBDIVISION OF LOT 3 DP 559093**

Surveyor: Christopher Paul Hopper  
Firm: Davis Ogilvie & Partners Ltd (Christchurch)

**Title Plan**  
LT 587128  
Approved on: 22/11/2023



Diag. ACC



T 9/22

Land District: Canterbury

**Digitally Generated Plan**

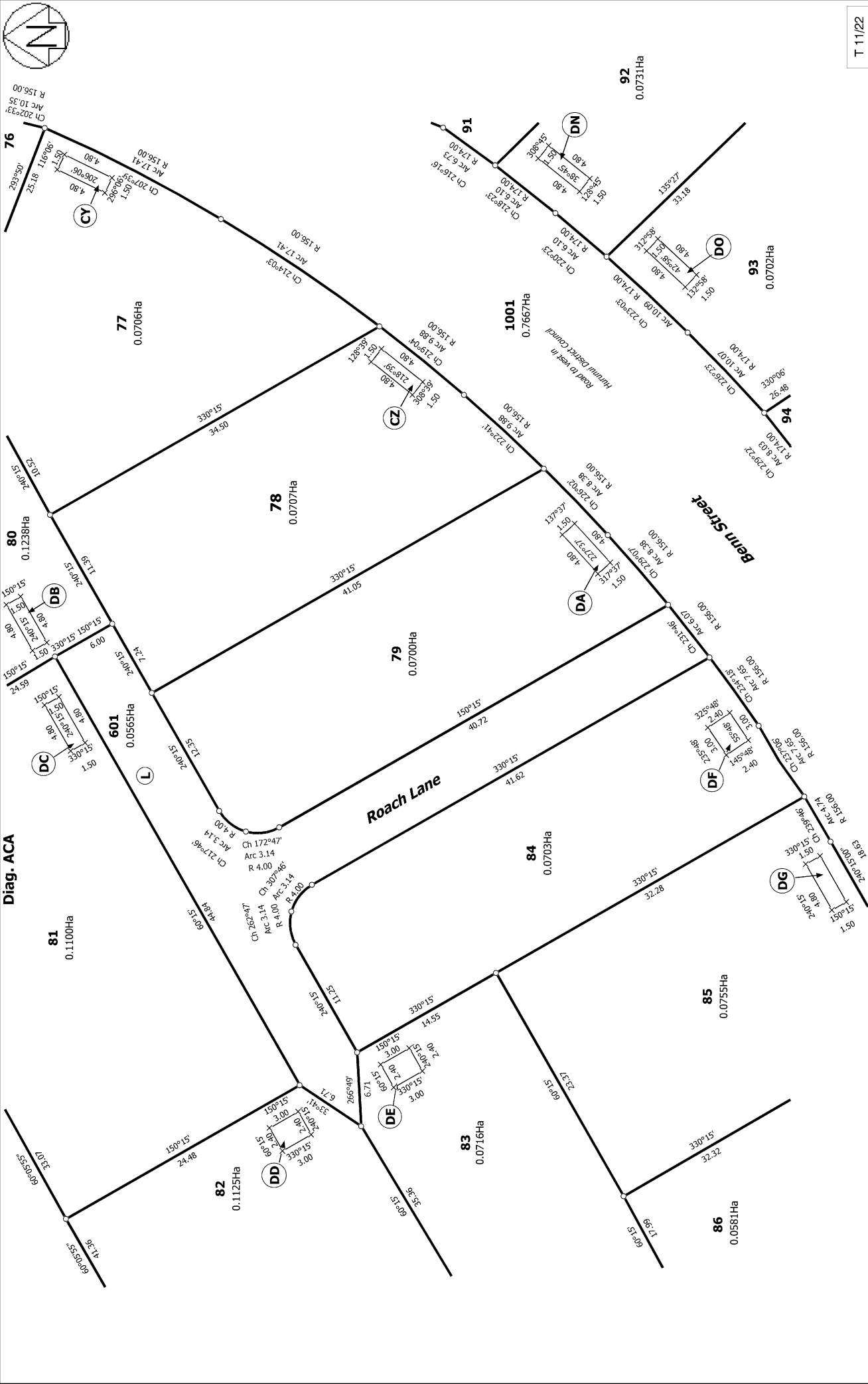
Generated on: 22/11/2023 2:57pm Page 20 of 33

**LOTS 1 - 123, 600, 601, 1000, 1001, 3000 - 3003 & 4000 BEING A  
SUBDIVISION OF LOT 3 DP 559093**

Surveyor: Christopher Paul Hopper  
Firm: Davis Ogilvie & Partners Ltd (Christchurch)

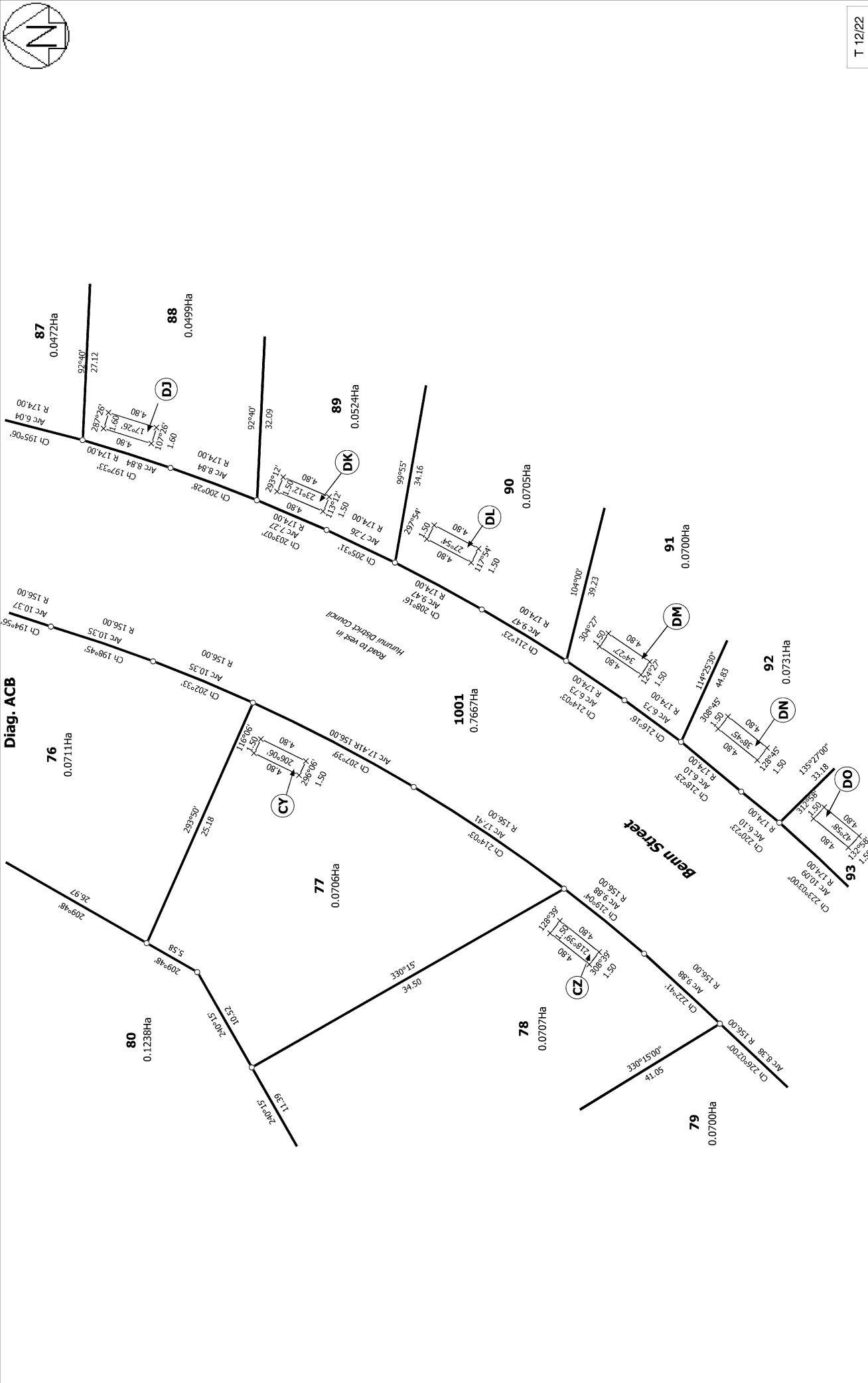
**Title Plan  
LT 587128  
Approved on: 22/11/2023**





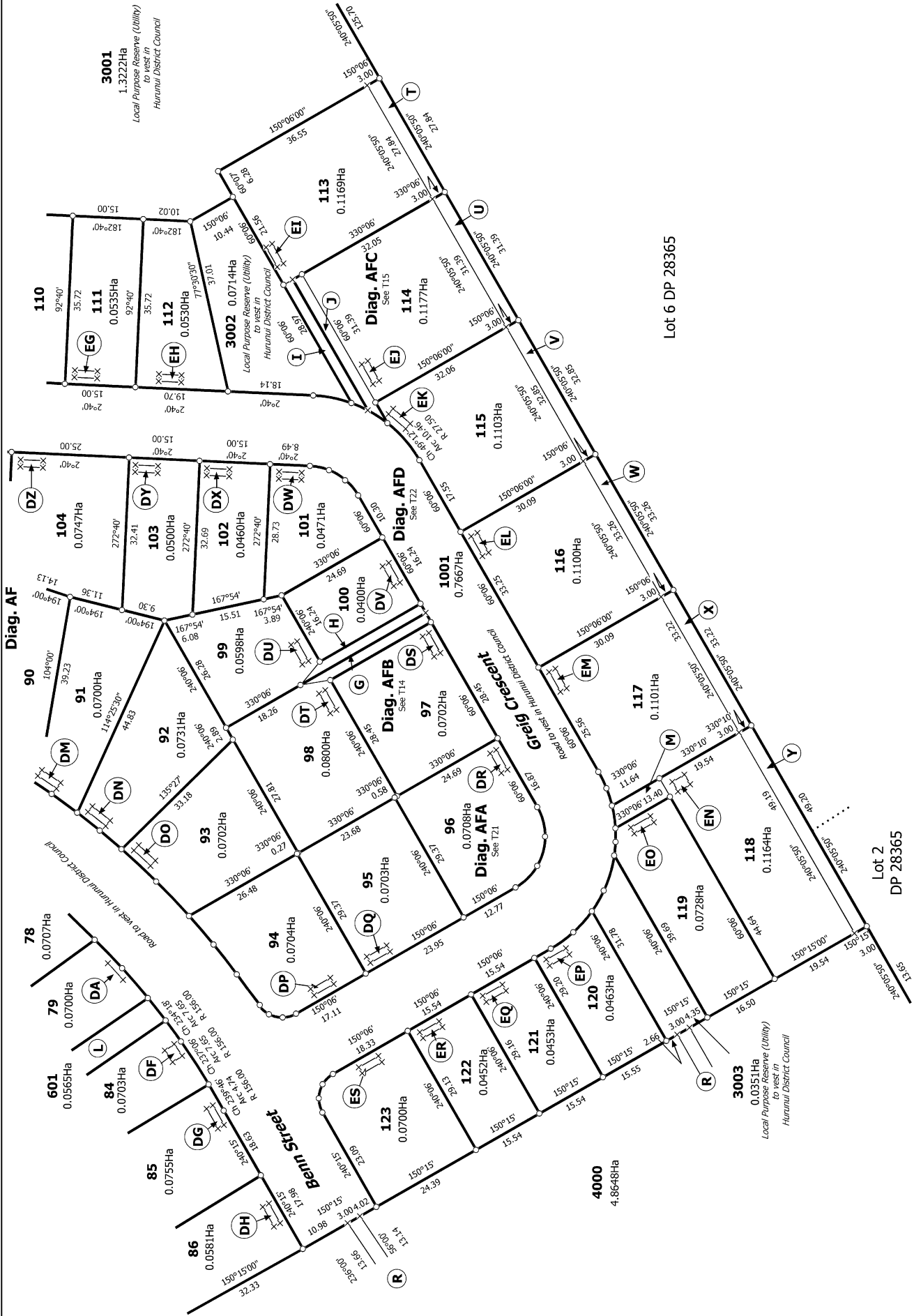
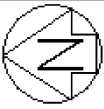
T 11/22

<p>Land District: Canterbury</p> <p><b>Digitally Generated Plan</b></p> <p>Generated on: 22/11/2023 2:57pm Page 22 of 33</p>	<p><b>LOTS 1 - 123, 600, 601, 1000, 1001, 3000 - 3003 &amp; 4000 BEING A SUBDIVISION OF LOT 3 DP 559093</b></p>	<p>Surveyor: Christopher Paul Hopper</p> <p>Firm: Davis Ogilvie &amp; Partners Ltd (Christcl)</p>	<p><b>Title Plan</b></p> <p><b>LT 587128</b></p> <p>Approved on: 22/11/2023</p>
--	---	---	---



T 12/22

<p>Land District: Canterbury</p>	<p>Surveyor: Christopher Paul Hopper Firm: Davis Ogilvie &amp; Partners Ltd (Christchurch)</p>	<p>Title Plan LT 587128 Approved on: 22/11/2023</p>
<p>LOTS 1 - 123, 600, 601, 1000, 1001, 3000 &amp; 4000 BEING A SUBDIVISION OF LOT 3 DP 559093</p>		
<p>Digitally Generated Plan Generated on: 22/11/2023 2:57pm Page 23 of 33</p>		



T 13/22

<p>Land District: Canterbury</p> <p><b>Digitally Generated Plan</b></p> <p>Generated on: 22/11/2023 2:57pm Page 24 of 33</p>	<p>Surveyor: Christopher Paul Hopper</p> <p>Firm: Davis Ogilvie &amp; Partners Ltd (Christchurch)</p>	<p><b>Title Plan</b></p> <p>LT 587128</p> <p>Approved on: 22/11/2023</p>
--	---	--

**LOTS 1 - 123, 600, 601, 1000, 1001, 3000 - 3003 & 4000 BEING A SUBDIVISION OF LOT 3 DP 559093**

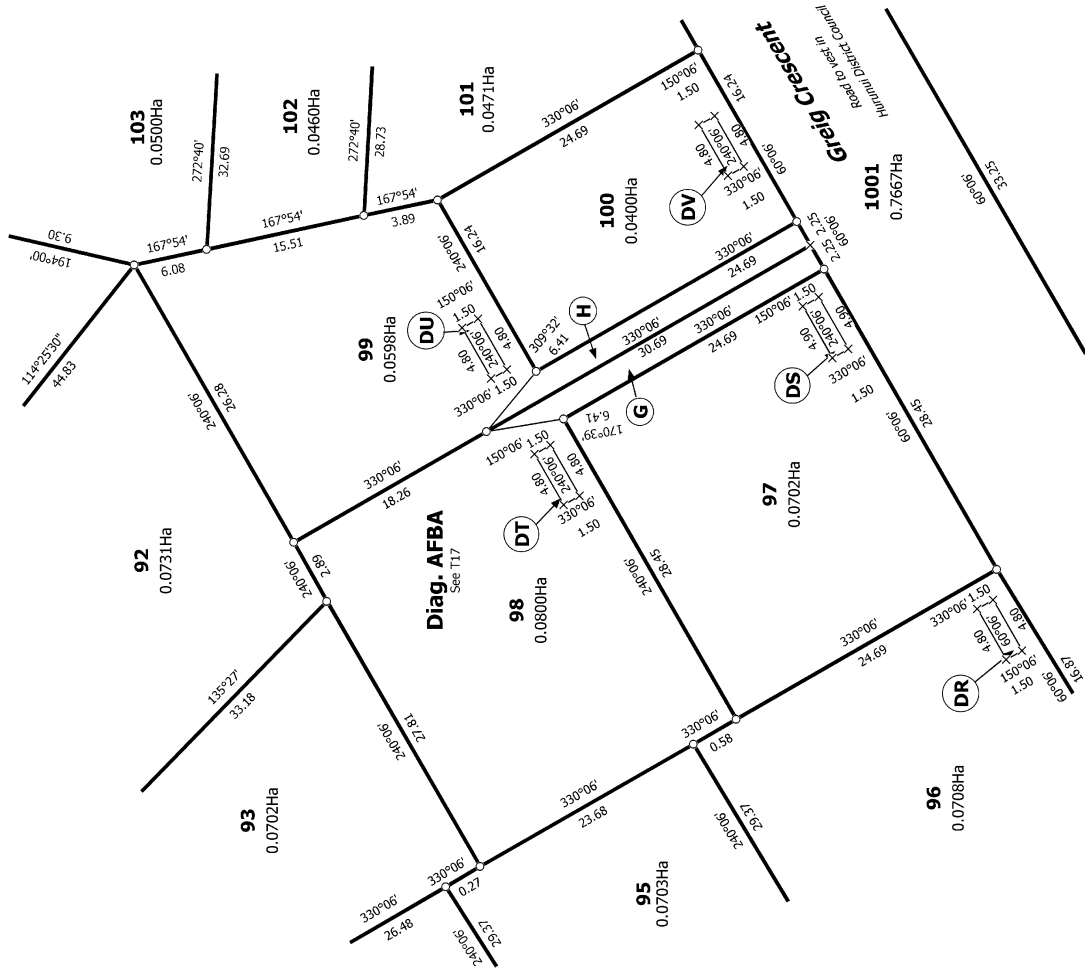
Lot 2  
DP 28365

Lot 6 DP 28365

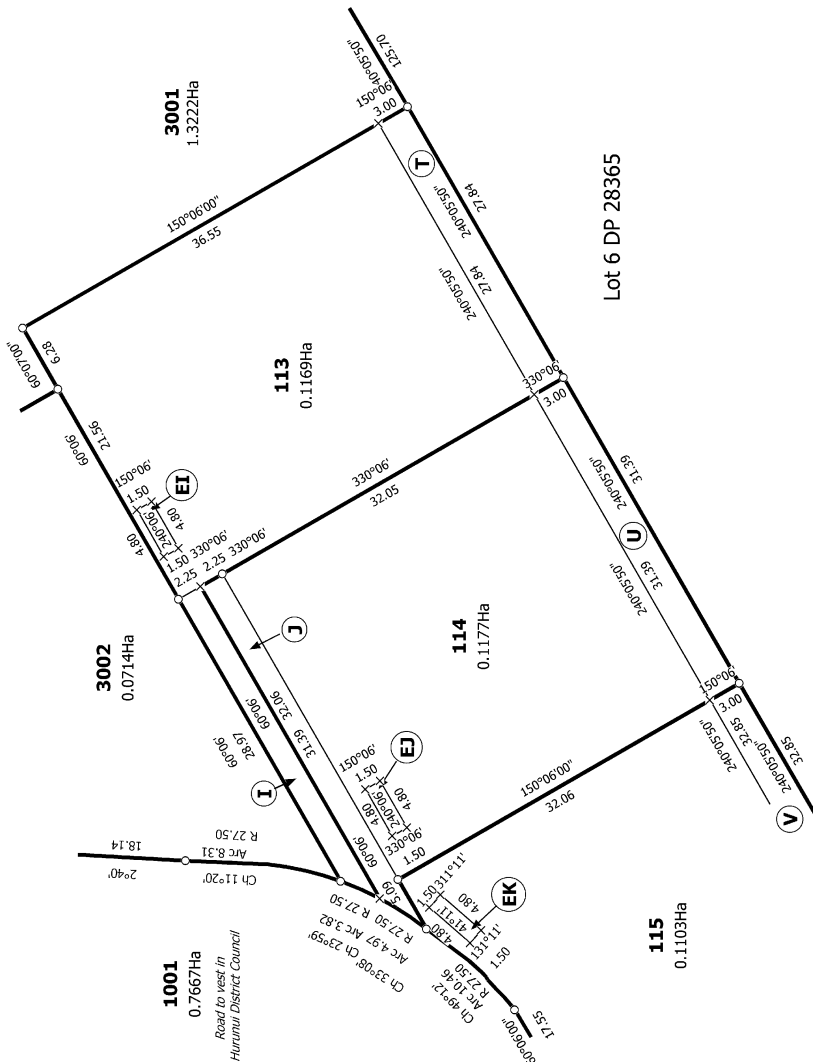




Diag. AFB



Diag. AO



T 14/22

Land District: Canterbury

Digitally Generated Plan

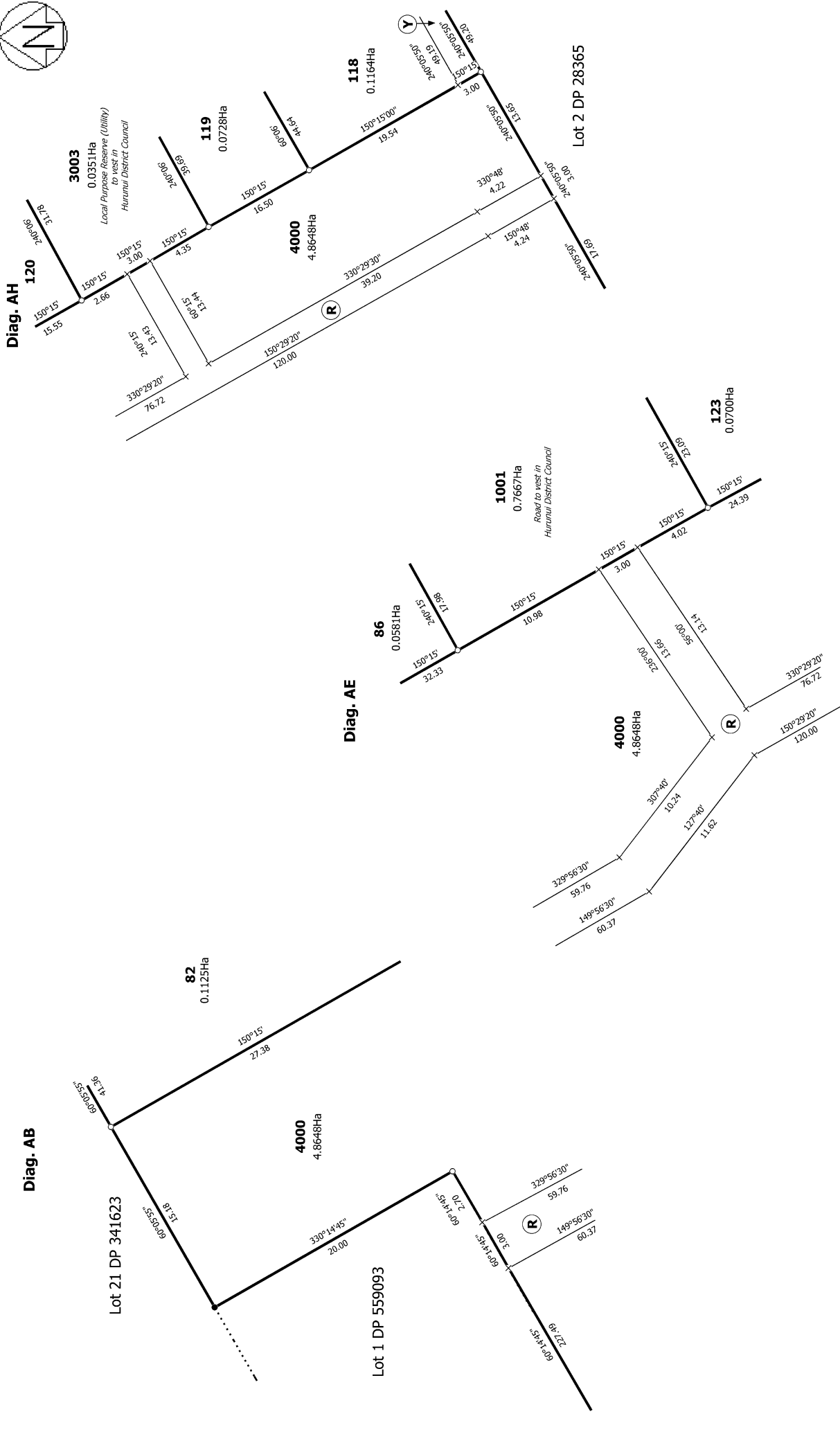
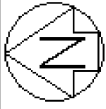
Generated on: 22/11/2023 2:57pm Page 25 of 33

LOTS 1 - 123, 600, 601, 1000, 1001, 3000 - 3003 & 4000 BEING A SUBDIVISION OF LOT 3 DP 559093

Surveyor: Christopher Paul Hopper  
Firm: Davis Ogilvie & Partners Ltd (Christcl)

Title Plan  
LT 587128  
Approved on: 22/11/2023





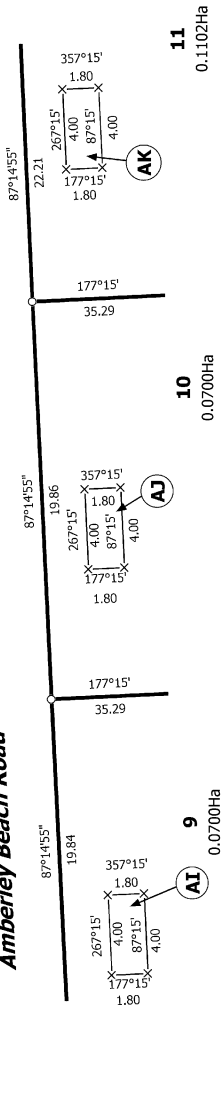
T 16/22

<p>Land District: Canterbury</p> <p><b>Digitally Generated Plan</b></p> <p>Generated on: 22/11/2023 2:57pm Page 27 of 33</p>	<p>LOTS 1 - 123, 600, 601, 1000, 1001, 3000 - 3003 &amp; 4000 BEING A SUBDIVISION OF LOT 3 DP 559093</p>	<p>Surveyor: Christopher Paul Hopper</p> <p>Firm: Davis Ogilvie &amp; Partners Ltd (Christchurch)</p>	<p><b>Title Plan</b></p> <p>LT 587128</p> <p>Approved on: 22/11/2023</p>
--	--	---	--

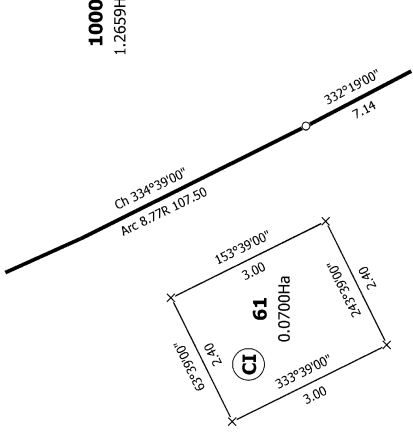


**Amberley Beach Road**

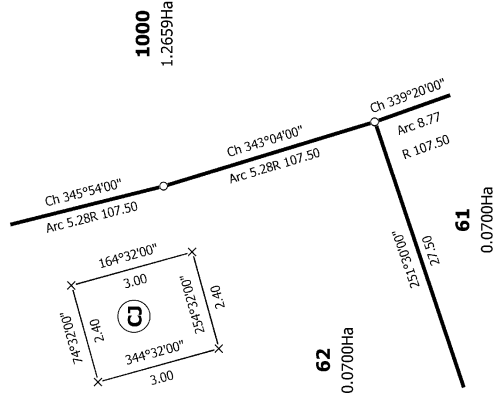
**Diag. AAC**



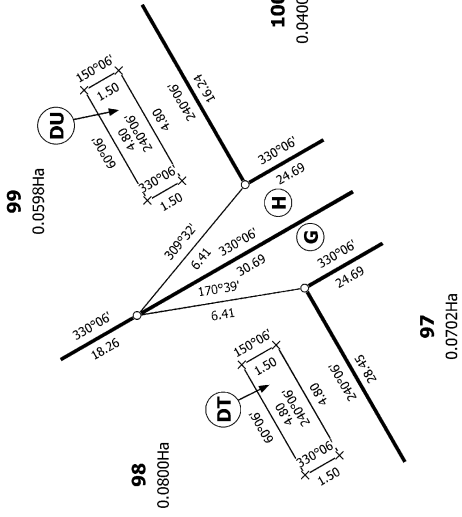
**Diag. AAGB**



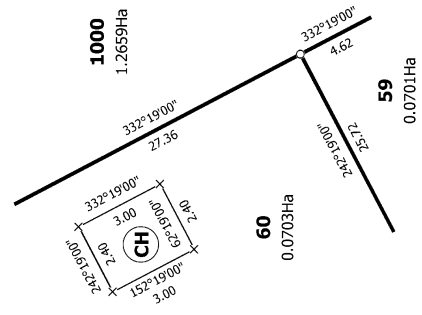
**Diag. AAGA**



**Diag. AFBA**



**Diag. AAH**



T 17/22

Land District: Canterbury

LOTS 1 - 123, 600, 601, 1000, 1001, 3000 - 3003 & 4000 BEING A

Title Plan  
LT 587128  
Approved on: 22/11/2023

Surveyor: Christopher Paul Hopper  
Firm: Davis Ogilvie & Partners Ltd (Christcl)

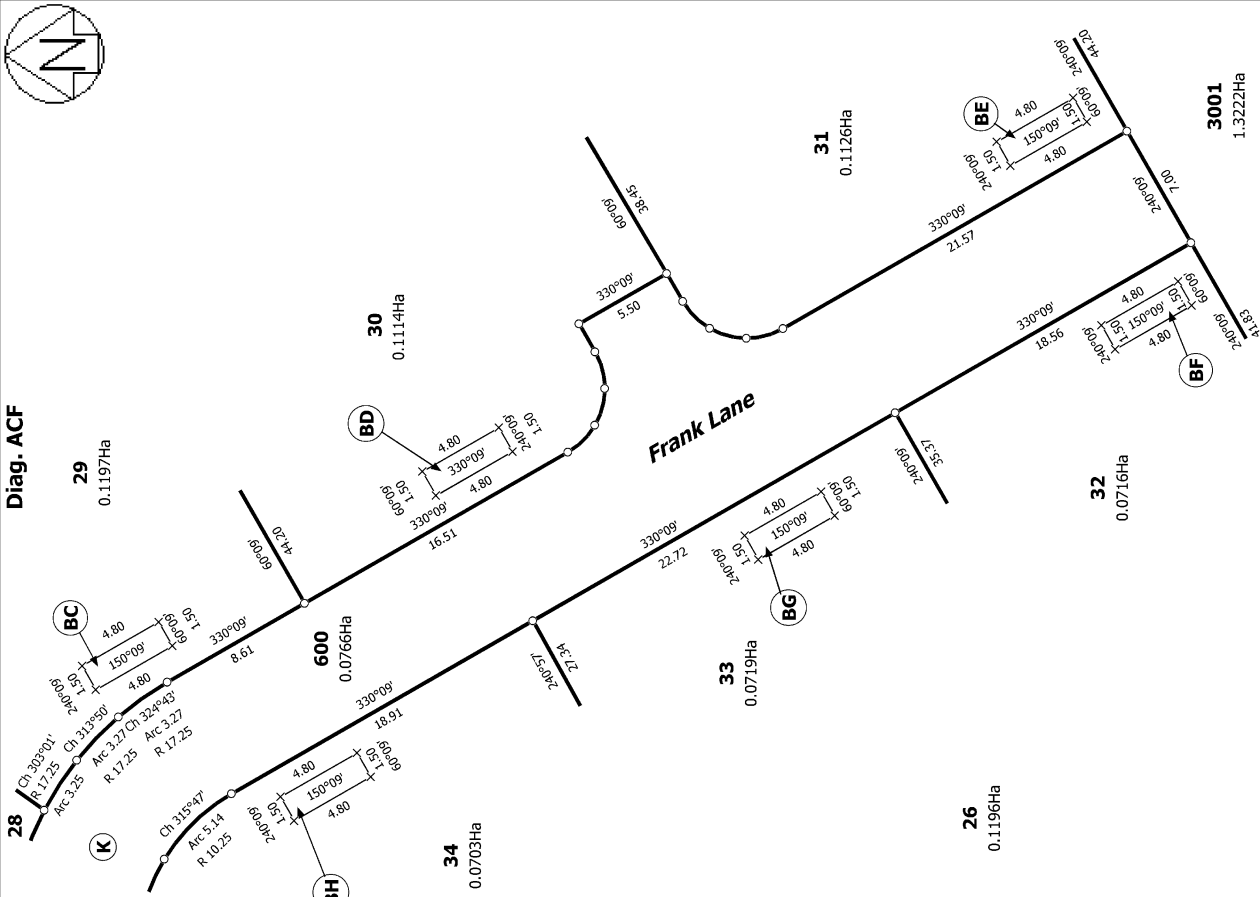
SUBDIVISION OF LOT 3 DP 559093

Digitally Generated Plan

Generated on: 22/11/2023 2:57pm Page 26 of 33

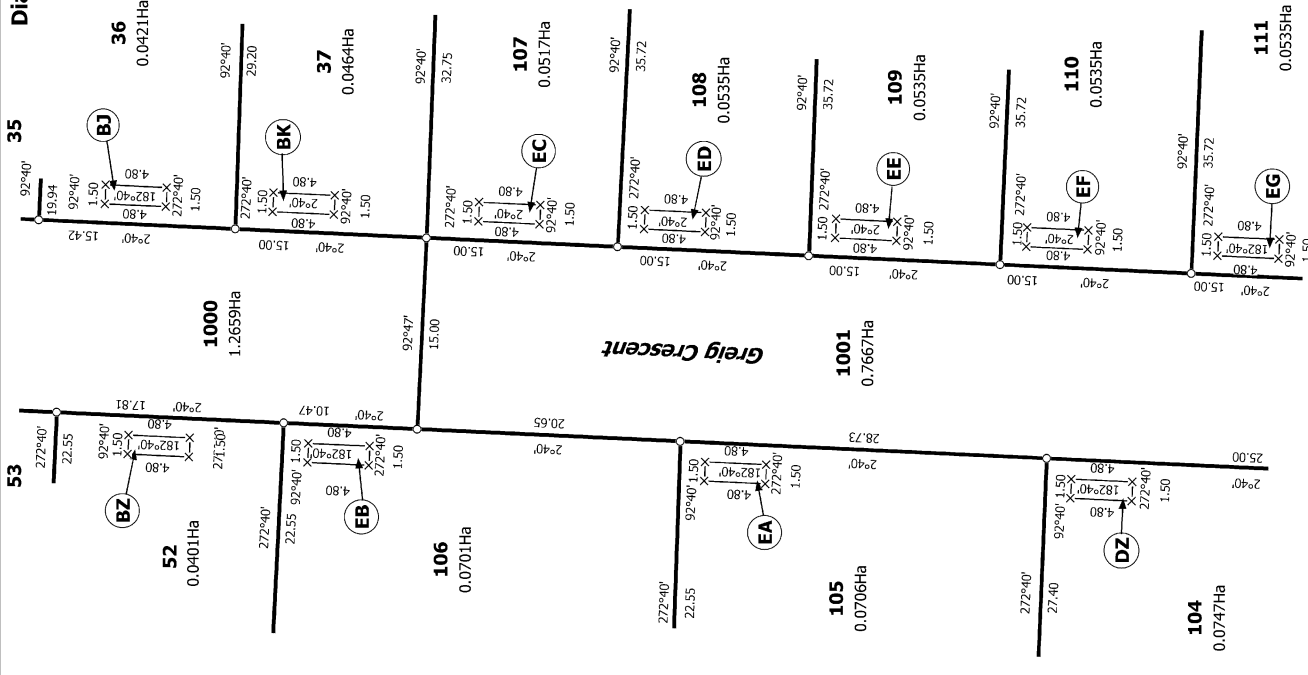


Diag. ACF



T 18/22

Diag. ACD



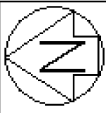
Title Plan  
 LT 587128  
 Approved on: 22/11/2023

Surveyor: Christopher Paul Hopper  
 Firm: Davis Ogilvie & Partners Ltd (Christcl)

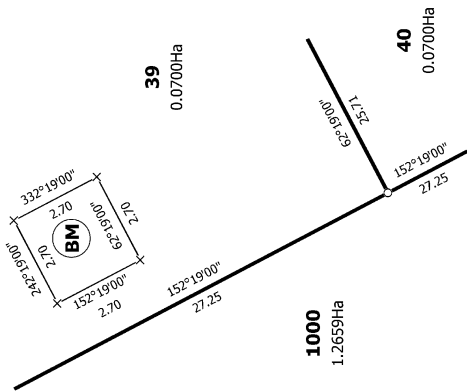
LOTS 1 - 123, 600, 601, 1000, 1001, 3000 - 3003 & 4000 BEING A  
 SUBDIVISION OF LOT 3 DP 559093

Land District: Canterbury  
 Digitally Generated Plan  
 Generated on: 22/11/2023 2:57pm Page 29 of 33

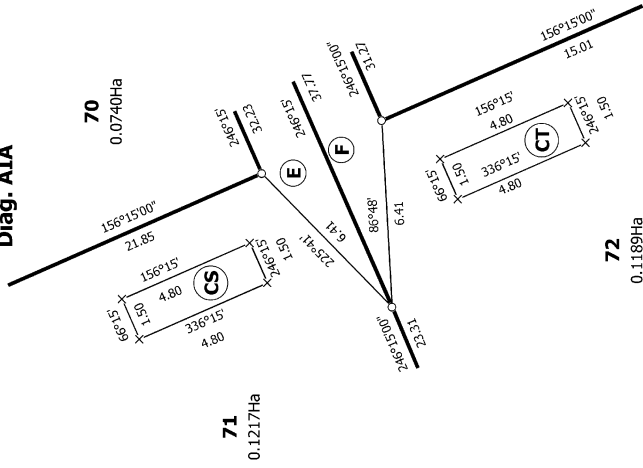




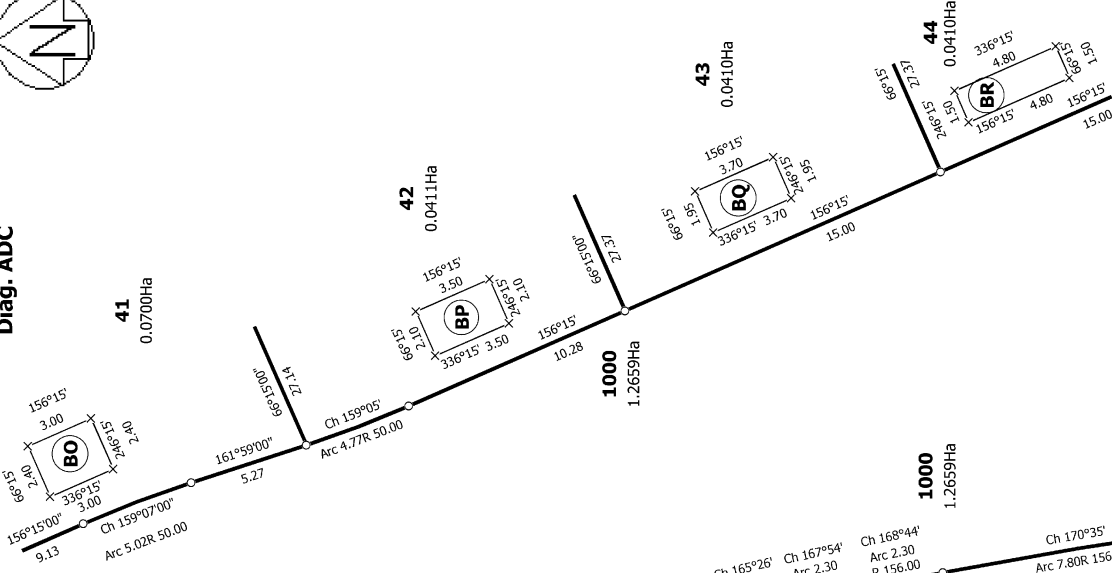
Diag. AAD



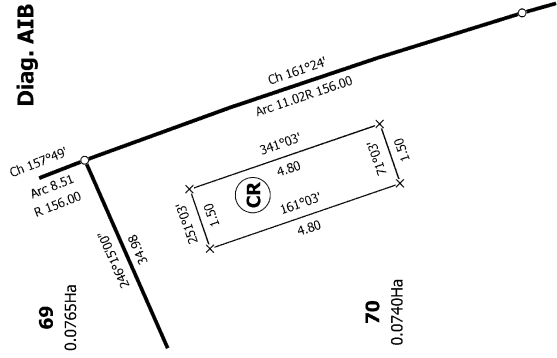
Diag. AIA



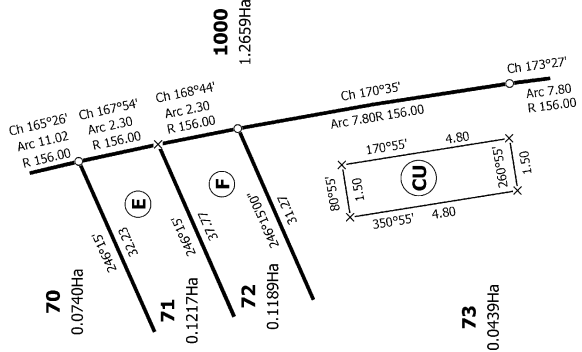
Diag. ADC



Diag. AIB



Diag. AIC



T 20/22

Land District: Canterbury

Digitally Generated Plan

Generated on: 22/11/2023 2:57pm Page 31 of 33

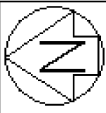
LOTS 1 - 123, 600, 601, 1000, 1001, 3000 - 3003 & 4000 BEING A  
SUBDIVISION OF LOT 3 DP 559093

Surveyor: Christopher Paul Hopper  
Firm: Davis Ogilvie & Partners Ltd (Christch)

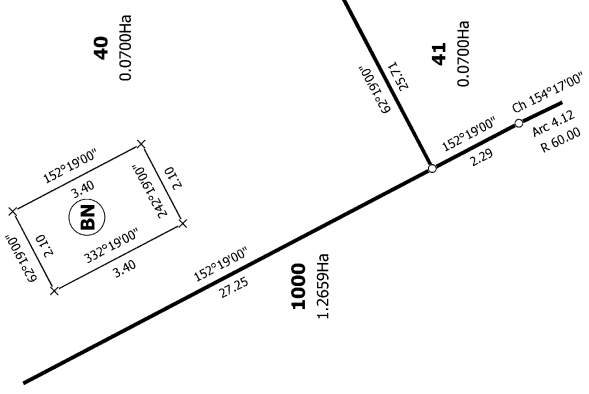
Title Plan  
LT 587128  
Approved on: 22/11/2023



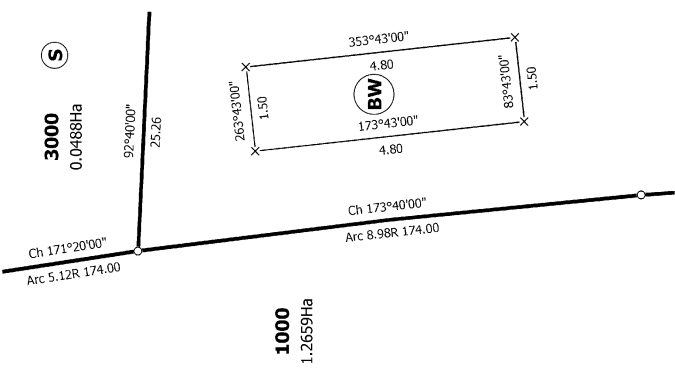




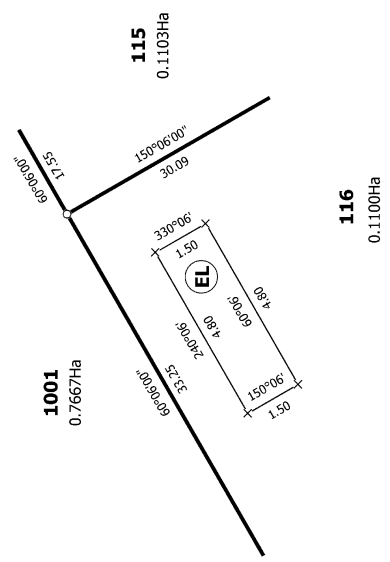
Diag. AJ



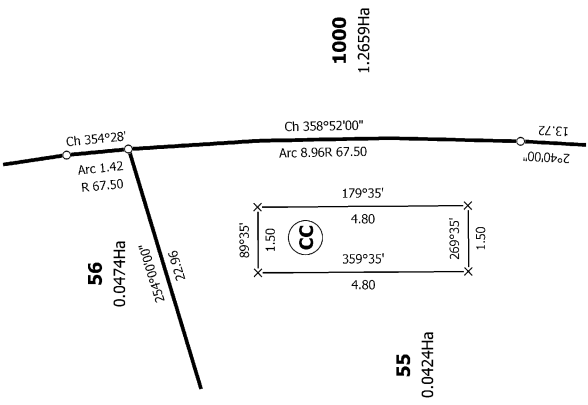
Diag. AKA



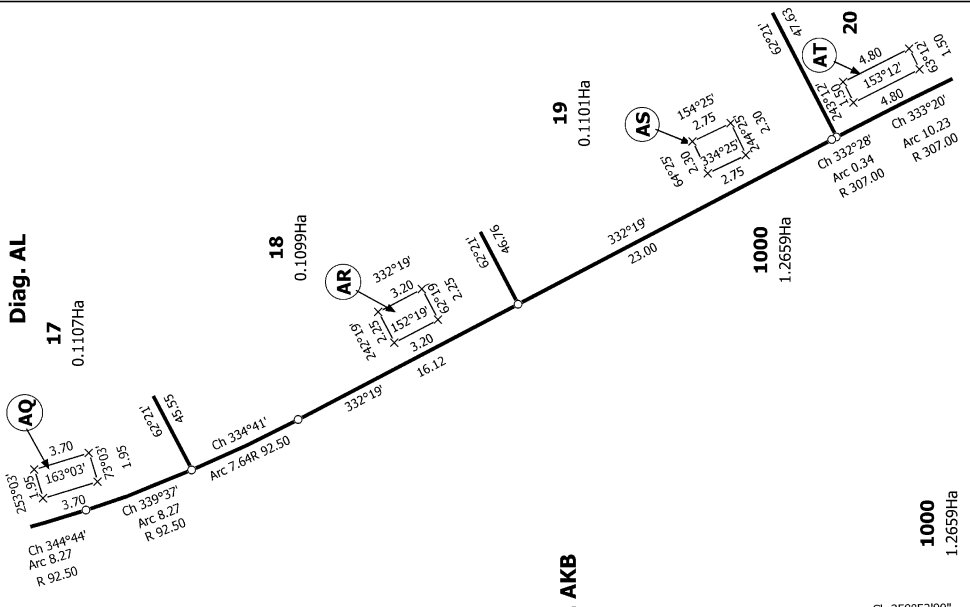
Diag. AFD



Diag. AKB



Diag. AL



T 22/22

Land District: Canterbury

Digitally Generated Plan

Generated on: 22/11/2023 2:57pm Page 33 of 33

LOTS 1 - 123, 600, 601, 1000, 1001, 3000 - 3003 & 4000 BEING A

SUBDIVISION OF LOT 3 DP 559093

Surveyor: Christopher Paul Hopper  
Firm: Davis Ogilvie & Partners Ltd (Christchurch)

Title Plan  
LT 587128  
Approved on: 22/11/2023