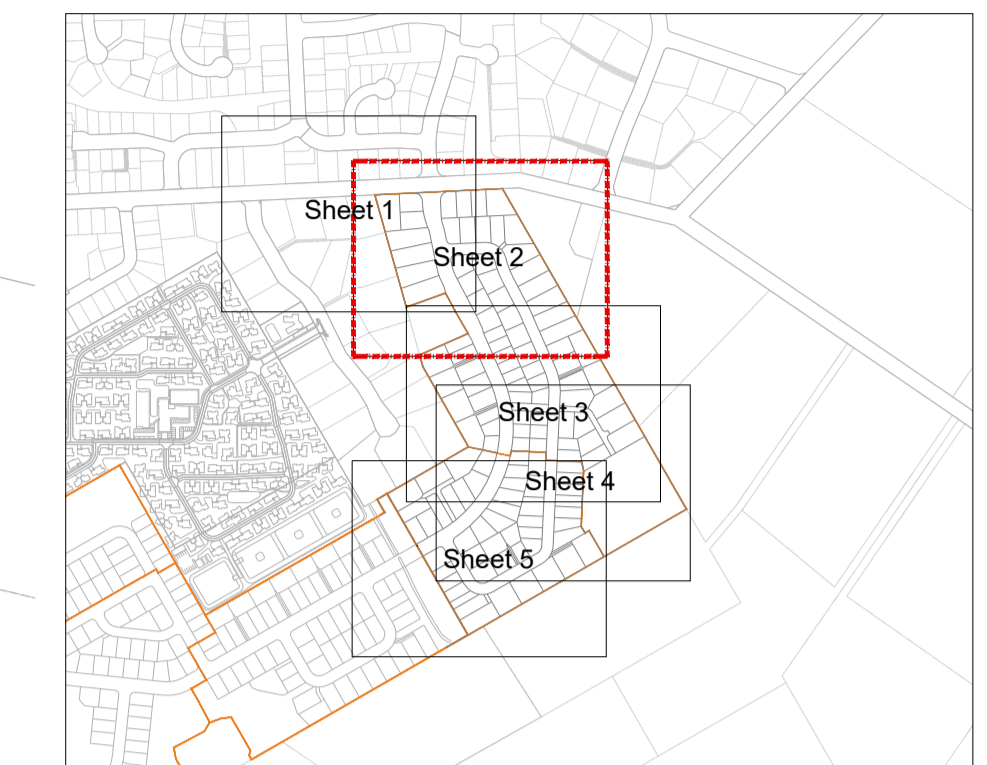


Rev.	Date	Reason	Approved
A1	04/08/23	224 - Asbuilts	BVB

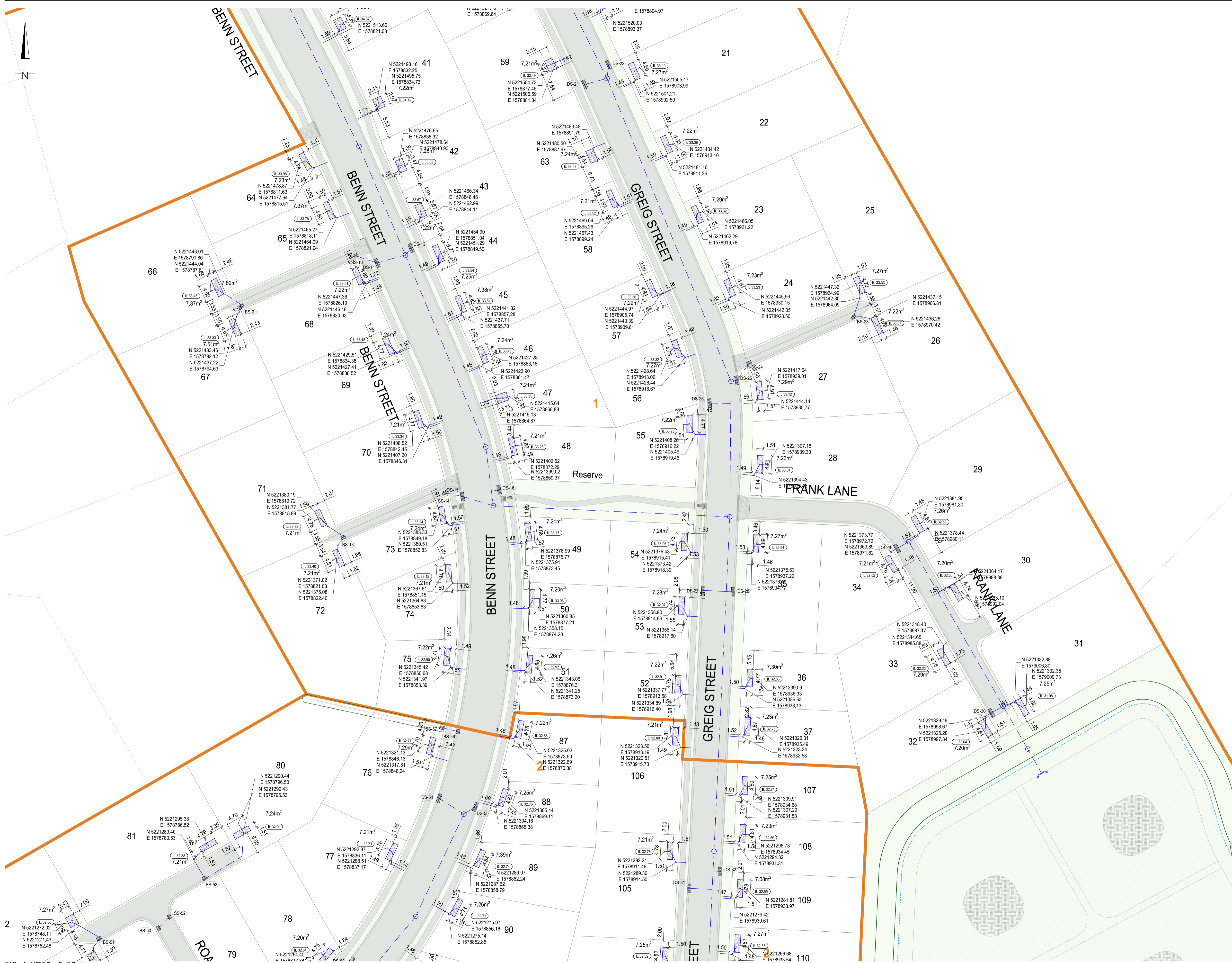
AS BUILT



LEGEND:

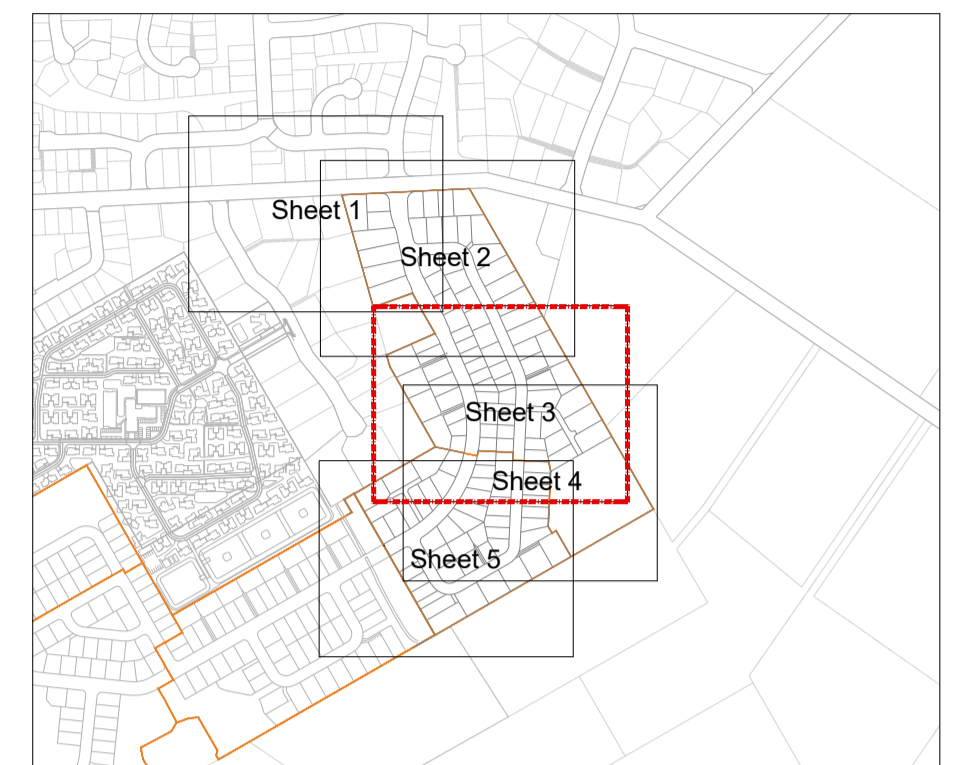
- Stage Boundary
- Proposed sewer pipe with diameter, material and gradient shown.
- Existing sewer pipe.
- Proposed sewer manhole with diameter, cover level and invert level shown.
- Existing sewer manhole
- Proposed stormwater pipe with diameter, material and gradient shown.
- Existing stormwater pipe.
- Proposed stormwater manhole with diameter, cover level and invert level shown.
- Existing stormwater manhole.
- SS-03 Proposed single sump.
- DS-03 Proposed double sump.
- BS-03 Proposed bubble up sump.
- Proposed Soakpit and overflow chamber to kerb adapter.

Coordinates are in terms of NZTM 2000.
 Heights are in terms of Lyttelton Vertical Datum 1937 (January 2018).
 Benchmark: AFNP (UA 98) RL 40.9236.



Rev.	Date	Reason	Approved
A1	04/08/23	224 - Asbuilts	BVB

AS BUILT



LEGEND:

- Stage Boundary
- Proposed sewer pipe with diameter, material and gradient shown.
- Existing sewer pipe.
- Proposed sewer manhole with diameter, cover level and invert level shown.
- Existing sewer manhole
- Proposed stormwater pipe with diameter, material and gradient shown.
- Existing stormwater pipe.
- Proposed stormwater manhole with diameter, cover level and invert level shown.
- Existing stormwater manhole.
- SS-03 Proposed single sump.
- DS-03 Proposed double sump.
- BS-03 Proposed bubble up sump.
- Proposed Soakpit and overflow chamber to kerb adapter.

Coordinates are in terms of NZTM 2000.
 Heights are in terms of Lyttleton Vertical Datum 1937 (January 2018).
 Benchmark: AFNP (UA) RN 40.9296.

CAD ref: 41793.DwgSet3.Drainage

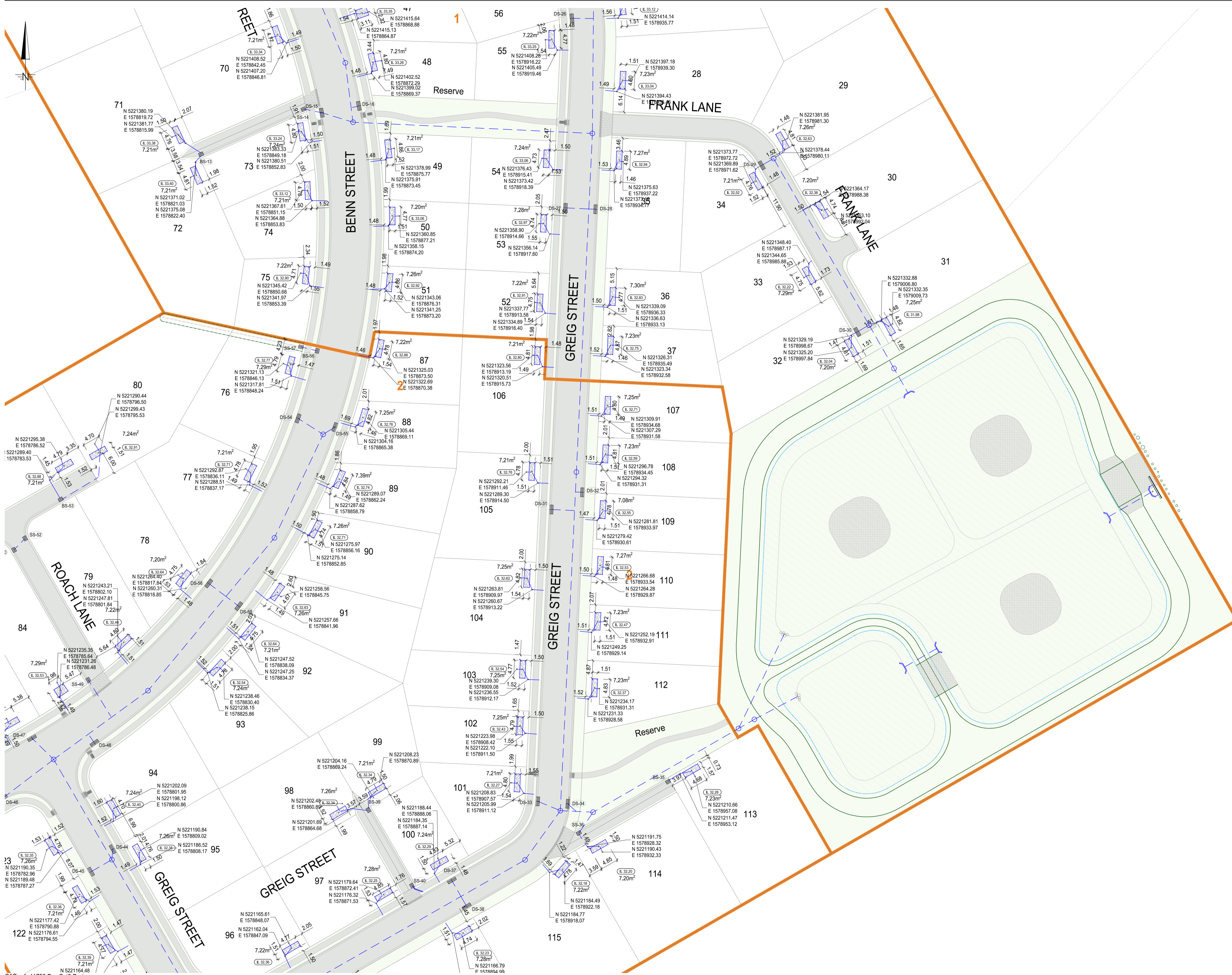
do DAVIS OGILVIE
 ENGINEERS / SURVEYORS / PLANNERS

Davis Ogilvie & Partners Limited
 Level 1, 24 Moorhouse Avenue, Addington, Christchurch 8140
 Office 0800 999 333 Email hello@do.nz
www.do.nz

**THE CLEARING - AMBERLEY BEACH ROAD, AMBERLEY
 SUBDIVISION**

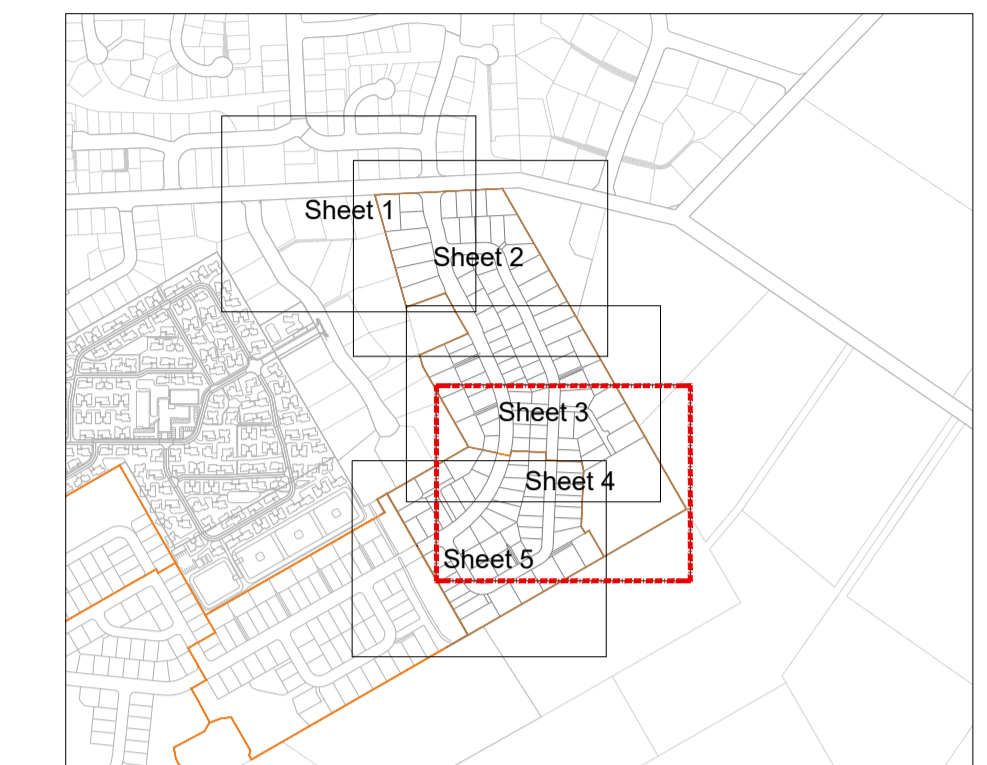
**224 - ASBUILTS - STAGES 1 & 2
 SOAKPIT AS-BUILTS - SHEET 2/4**

Design	Drawn	QA Check	Dwg No.
JW	SM	BVB	AB21
Scale @ A1	Date	Job No.	Rev.
1:500	08/23	41793	A



Rev.	Date	Reason	Approved
A1	04/08/23	224 - Asbuilts	BVB

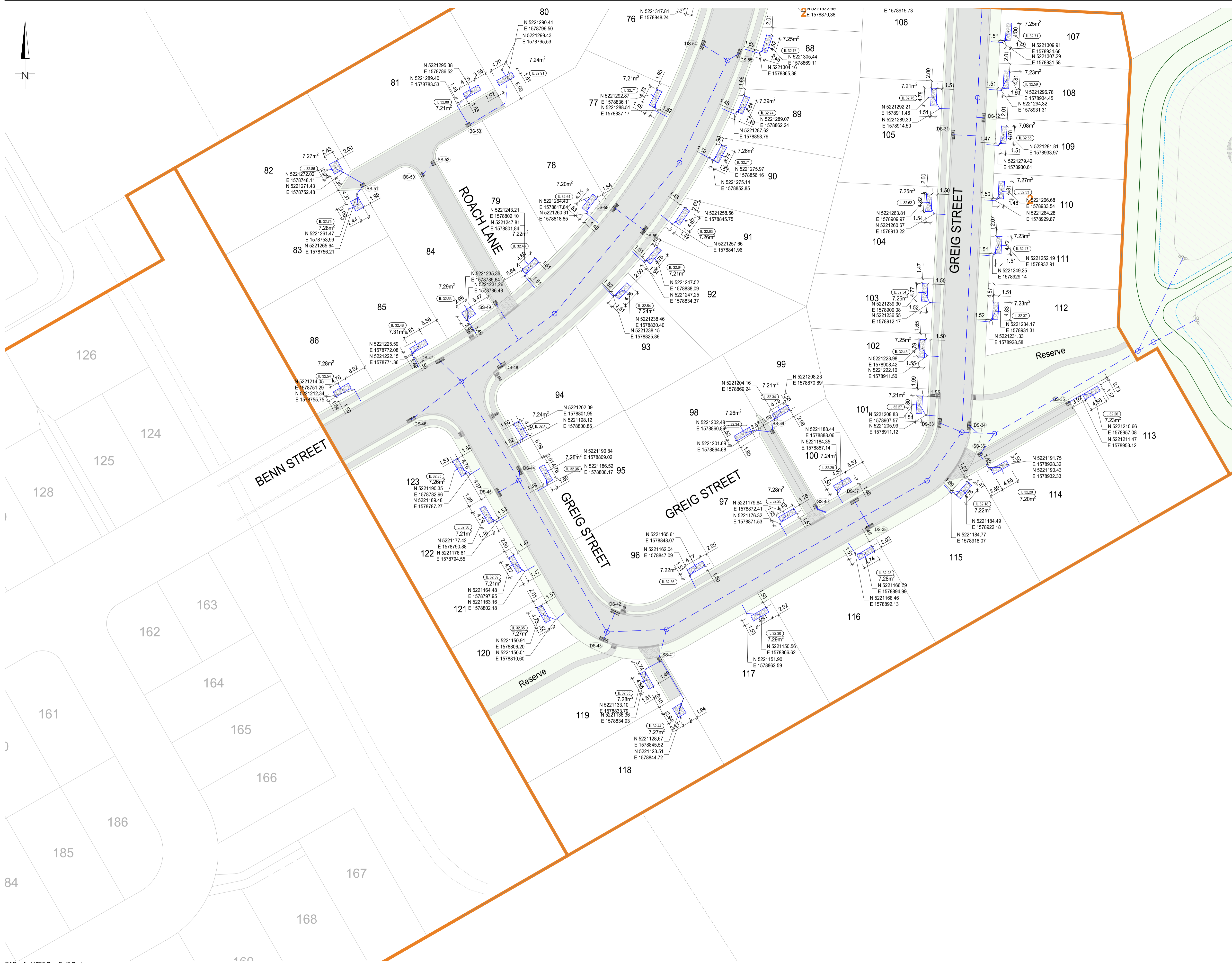
AS BUILT



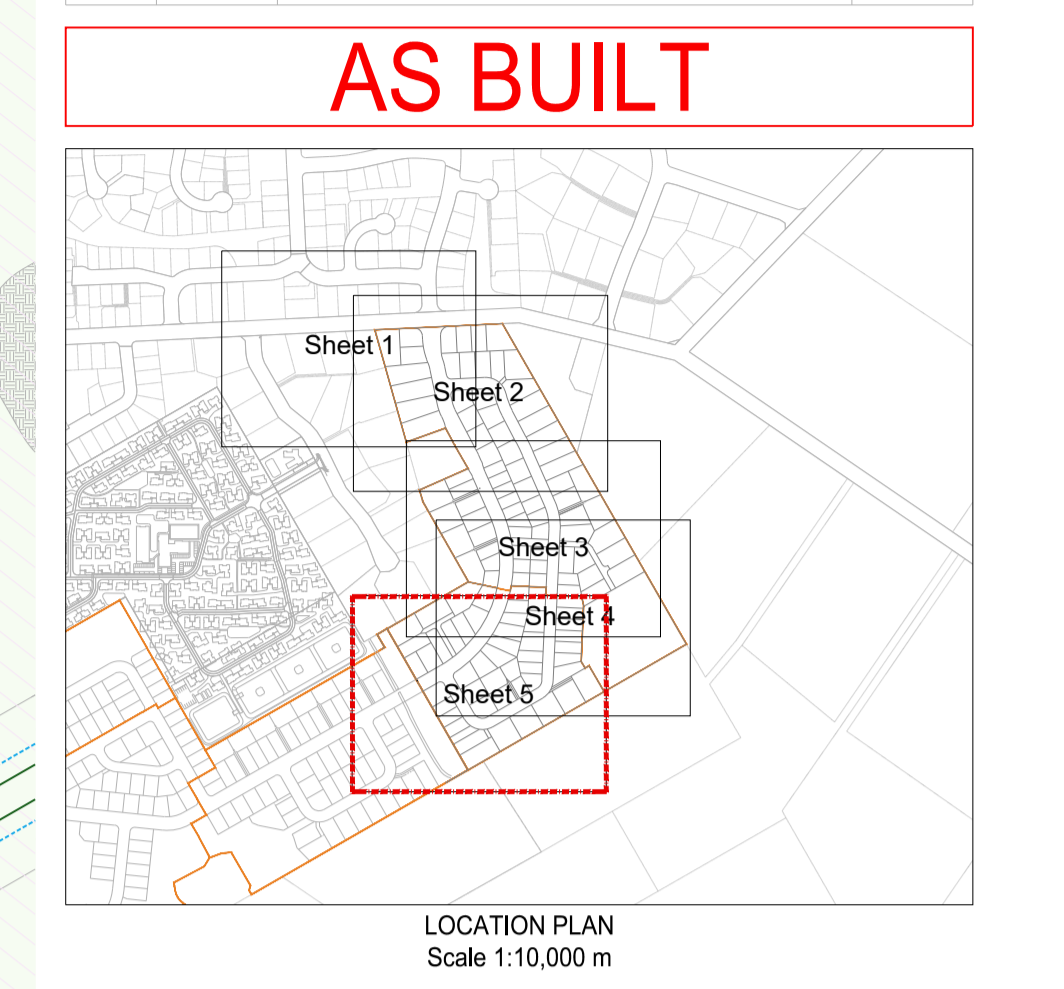
LEGEND:

- Stage Boundary
- Proposed sewer pipe with diameter, material and gradient shown.
- Existing sewer pipe.
- Proposed sewer manhole with diameter, cover level and invert level shown.
- Existing sewer manhole
- Proposed stormwater pipe with diameter, material and gradient shown.
- Existing stormwater pipe.
- Proposed stormwater manhole with diameter, cover level and invert level shown.
- Existing stormwater manhole.
- SS-03 Proposed single sump.
- DS-03 Proposed double sump.
- BS-03 Proposed bubble up sump.
- Proposed Soakpit and overflow chamber to kerb adapter.

Coordinates are in terms of NZTM 2000.
Heights are in terms of Lyttelton Vertical Datum 1937 (January 2018).
Benchmark: AFNP (UA 98) RL 40.9296.



Rev.	Date	Reason	Approved
A1	04/08/23	224 - ASbuilts	BVB



LEGEND:

- Stage Boundary
- Proposed sewer pipe with diameter, material and gradient shown.
- Existing sewer pipe.
- Proposed sewer manhole with diameter, cover level and invert level shown.
- Existing sewer manhole
- Proposed stormwater pipe with diameter, material and gradient shown.
- Existing stormwater pipe.
- Proposed stormwater manhole with diameter, cover level and invert level shown.
- Existing stormwater manhole.
- SS-03 Proposed single sump.
- DS-03 Proposed double sump.
- BS-03 Proposed bubble up sump.
- L 32.30 Proposed Soakpit and overflow chamber to kerb adapter.

Coordinates are in terms of NZTM 2000.
 Heights are in terms of Lyttelton Vertical Datum 1937 (January 2018).
 Benchmark: AFNP (JA 98) RL 40.9296.