

Step 1. Put Batteries (12V 23A/L1028) into the remote control - long press yellow button on remote control, if you see red light is on, it means the remote control is functioning.



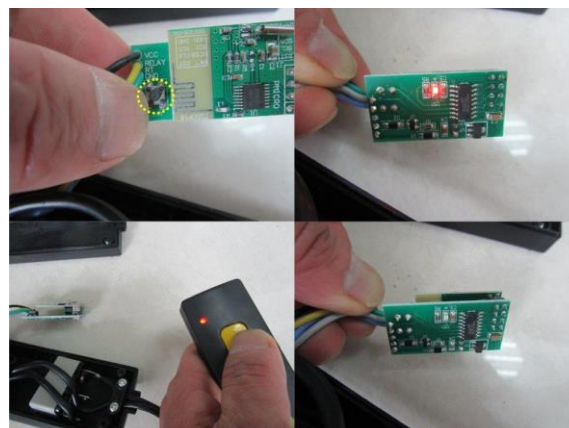
Step 2. Open the black external plastic box and find the circuit board with the receiver.



Step 3. Connect the compressor's red battery clamp to a battery's positive terminal, then connect the compressor's black battery clamp to a battery's negative terminal. Red light on the circuit board will turn on for a short period when the electricity is connected.



Step 4. Short press the pairing button on the circuit board, red light on the back of the circuit board will turn on when the circuit board is ready for pairing. Then short press the yellow button on the remote control, the red light on the back of the circuit board will turn off when the pairing is complete.



Step 5. Carefully put the circuit board back into the external black plastic box and ready to use the remote control function.