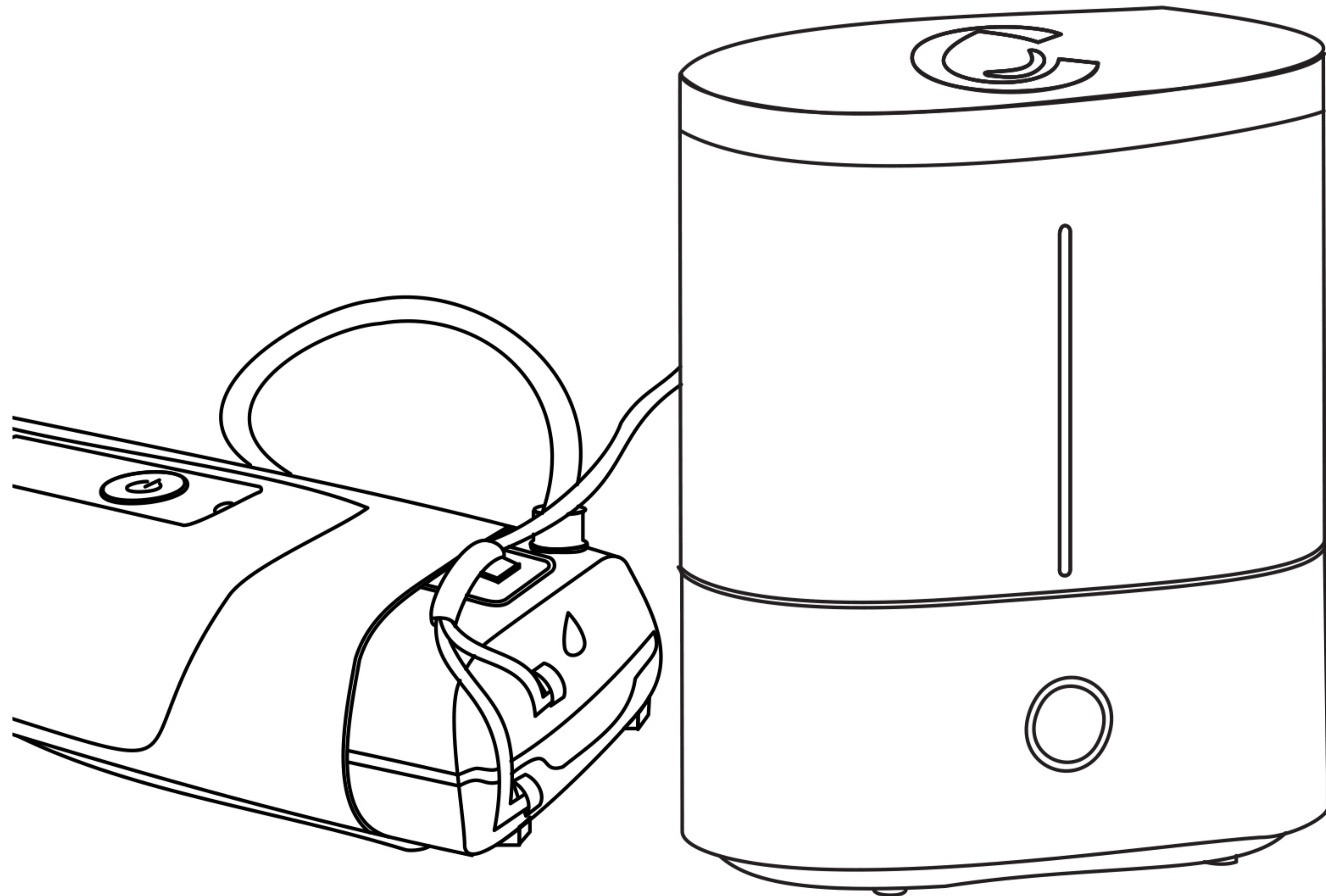


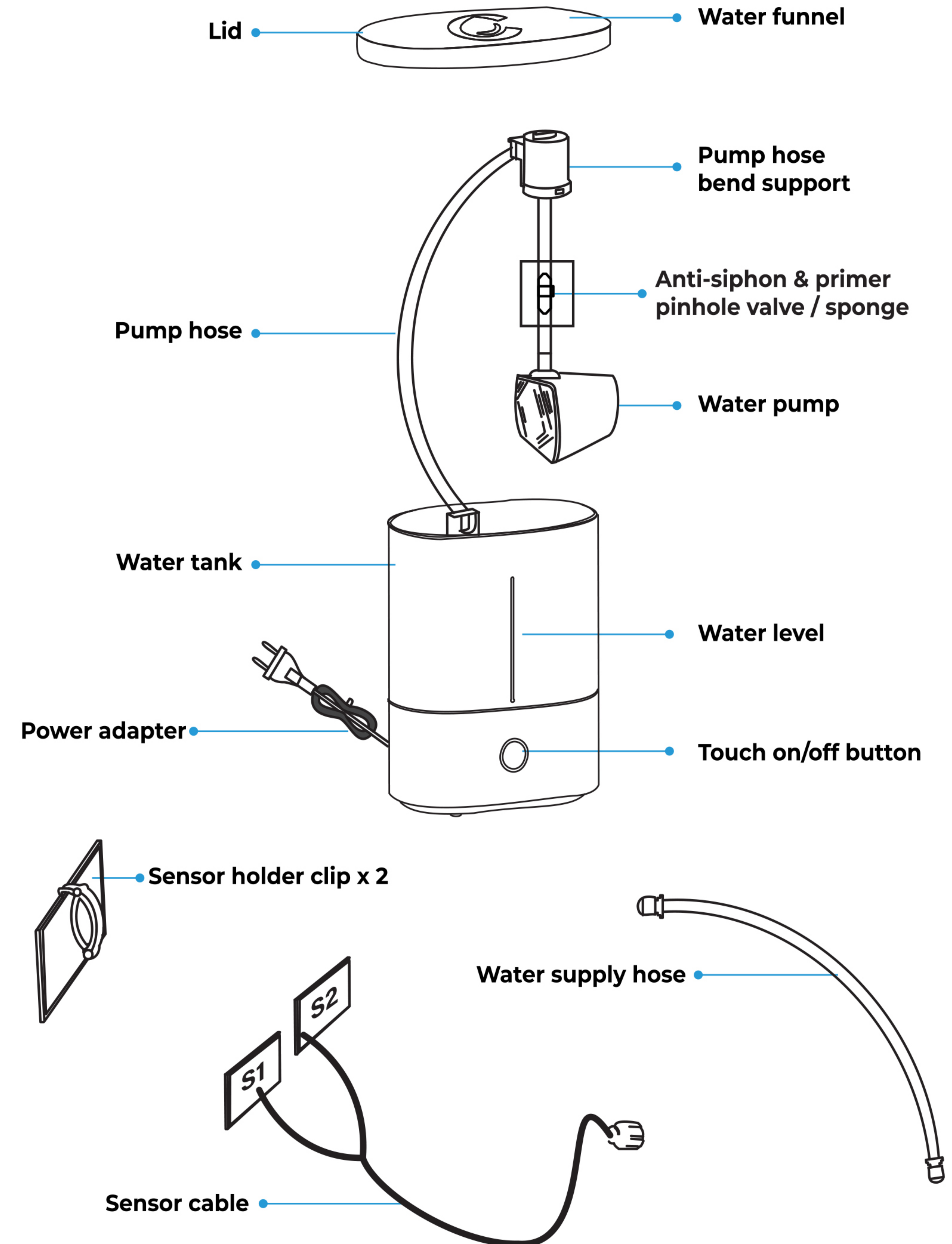


CSpring MK2

Instruction for:
 ResMed Airsense 10
 ResMed Aircurve 10
 ResMed Airsense 11



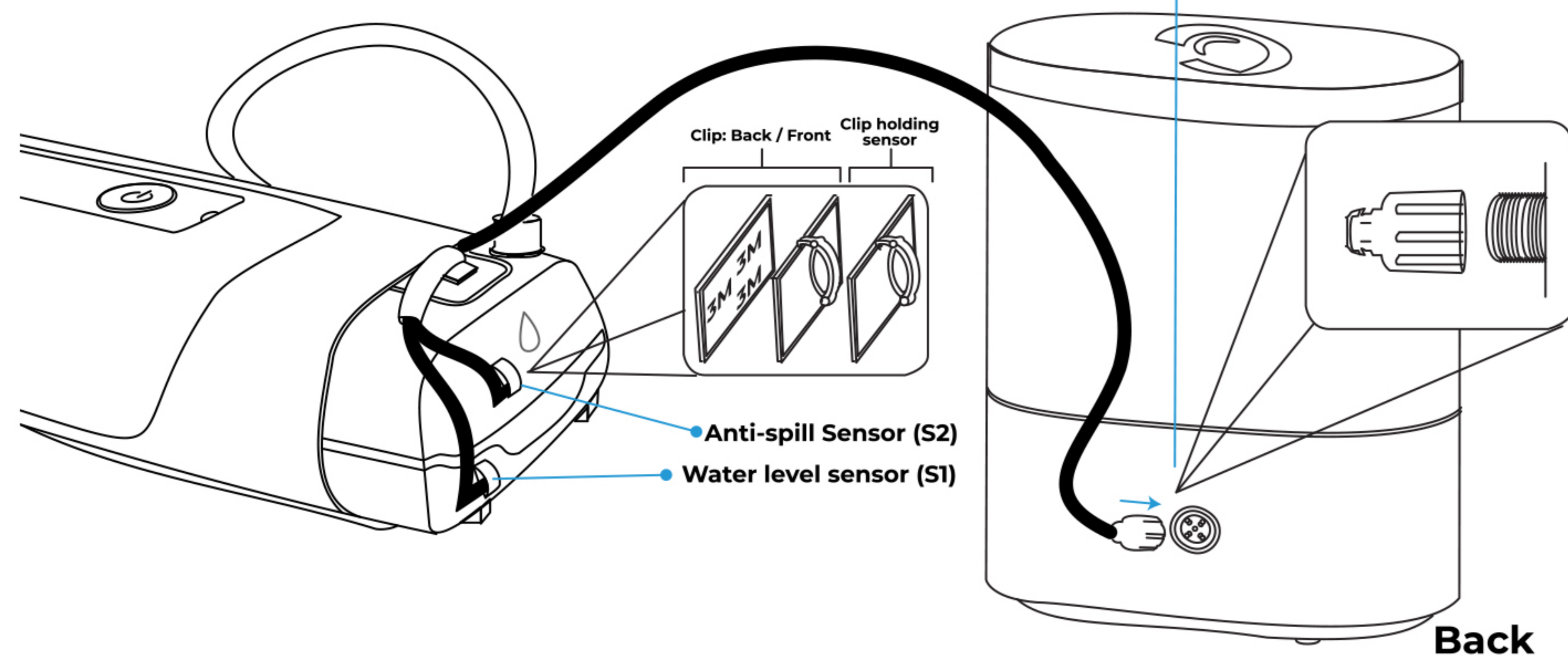
PARTS LIST



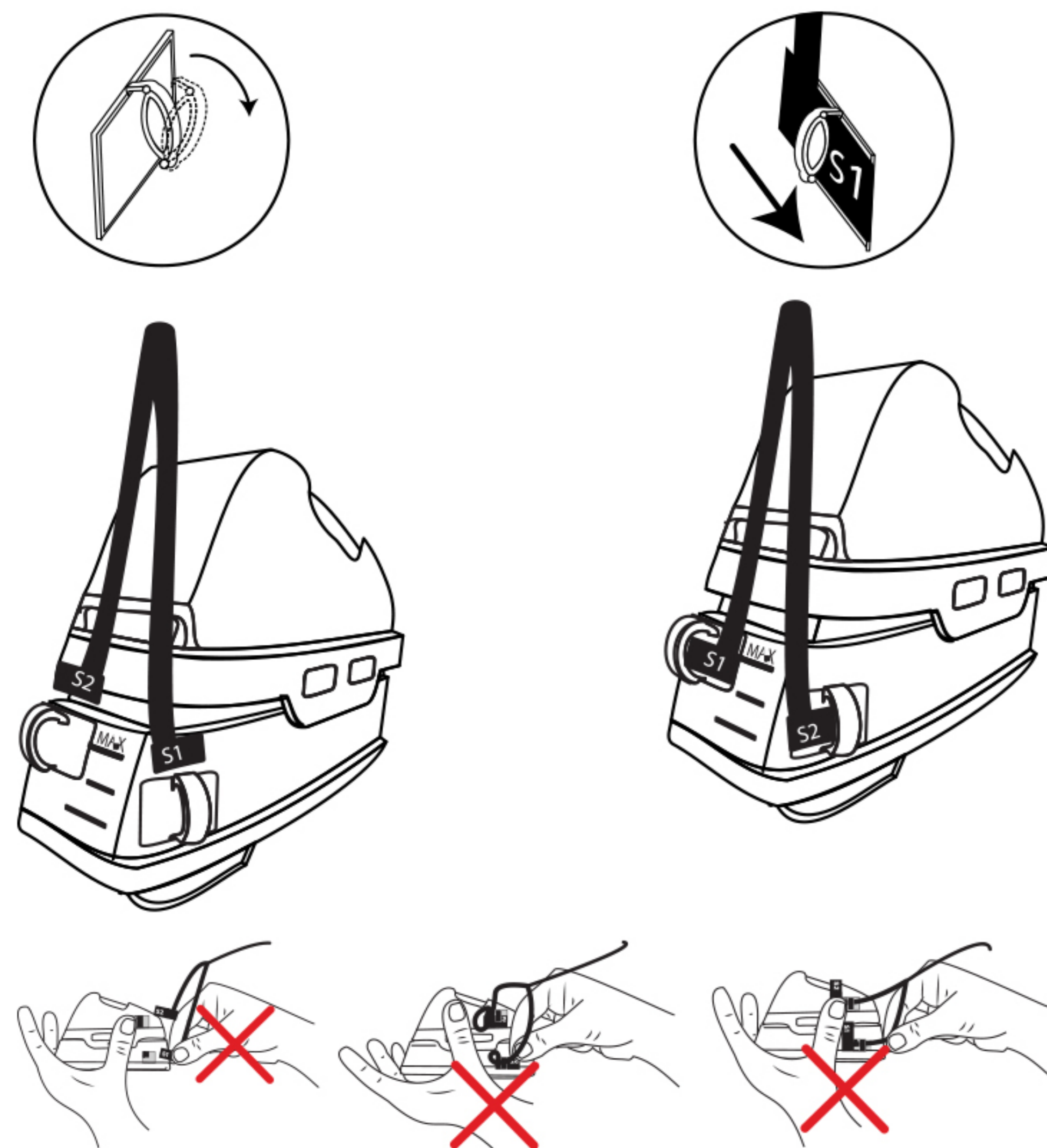
1 Replacing the Water Chamber / Installing the sensors

! Most CSpring devices come with a replacement water chamber and pre-installed sensors.

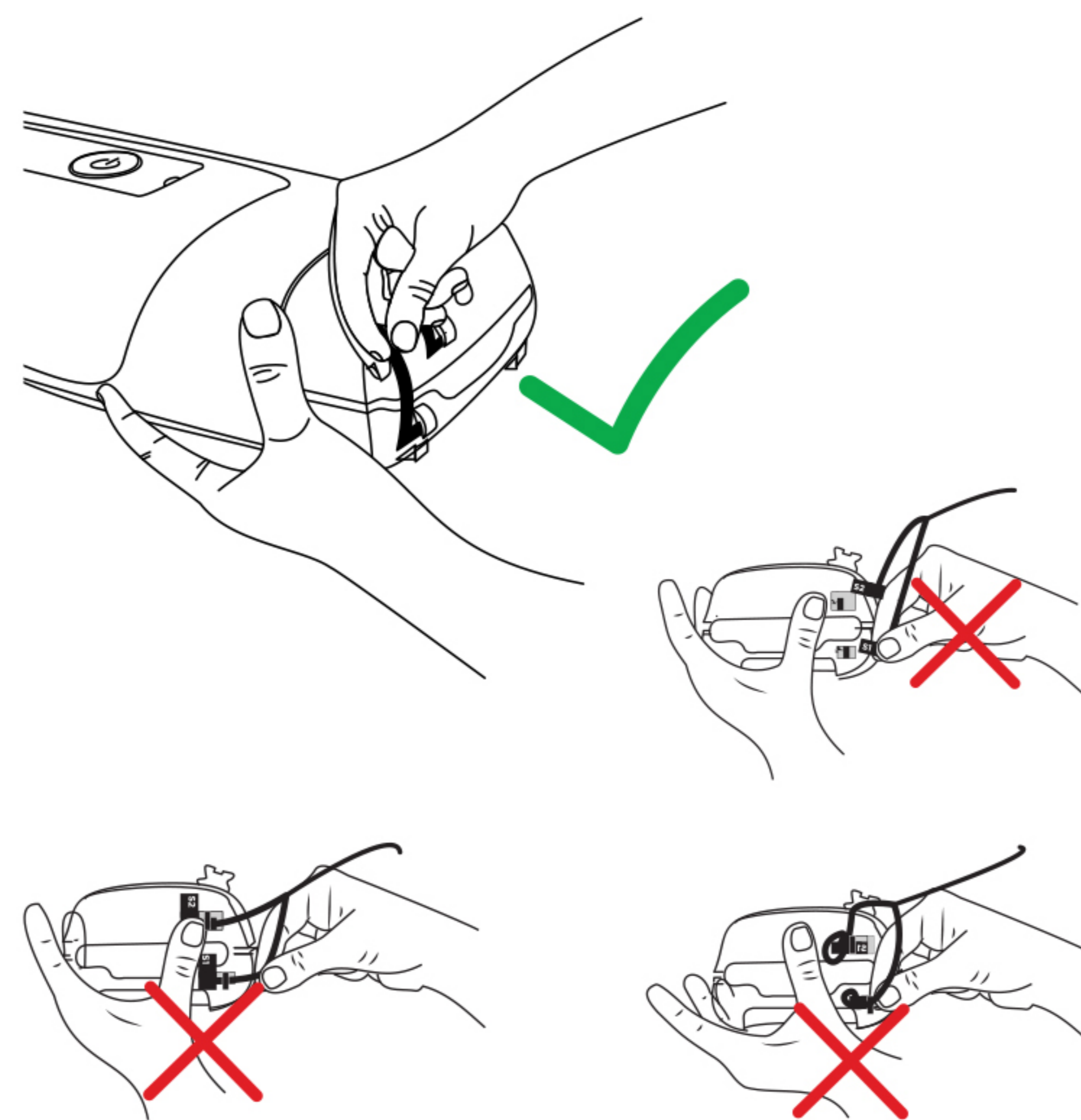
- 1- Replace your CPAP water chamber with the one included with your CSpring one®. (The sensor harness should come attached to the water chamber clips)
- 2- Align the the sensor harness plug into the socket pins, Insert and tighten until it is secure.



Airsense & Aircurve 10

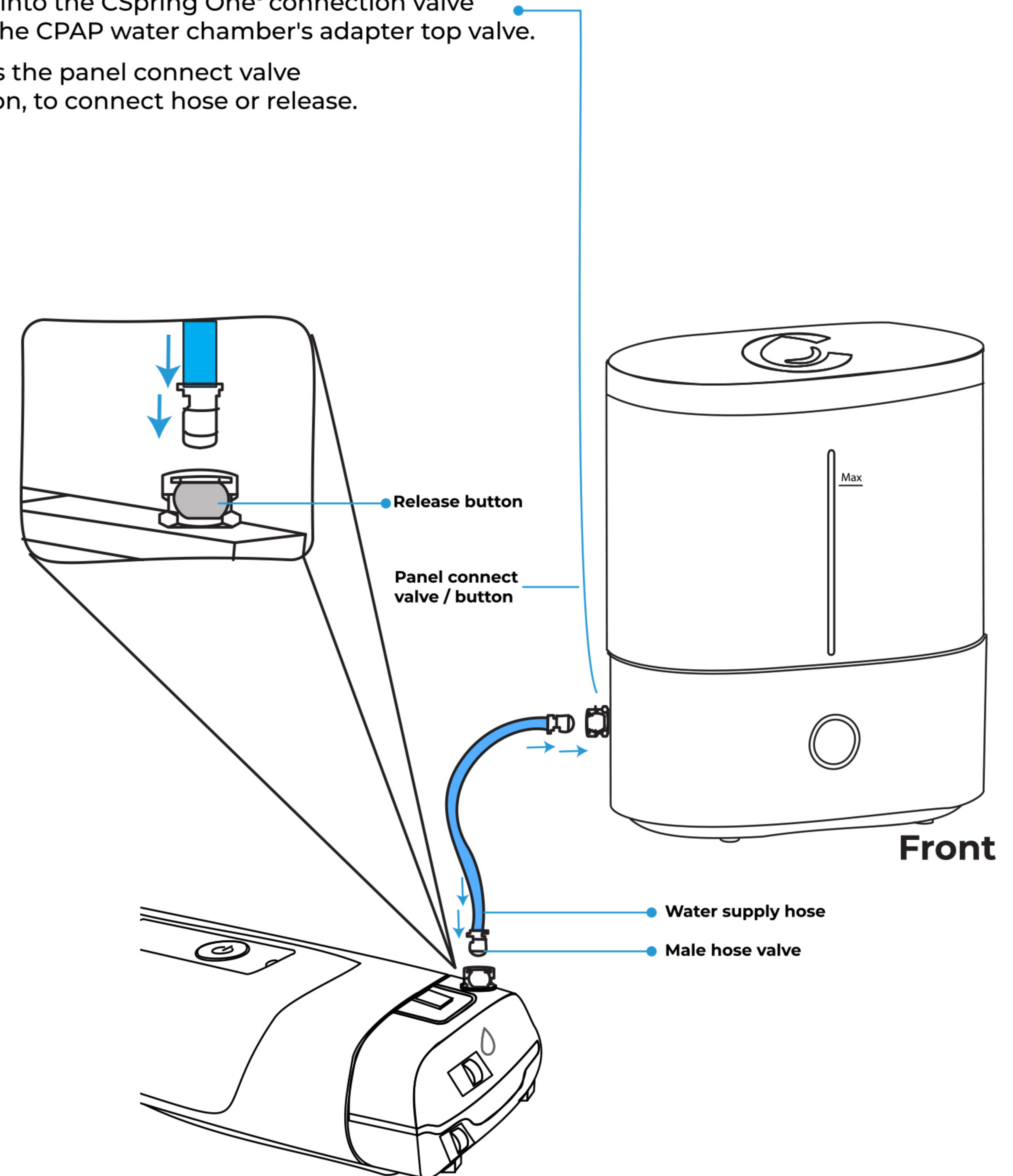


Airsense 11



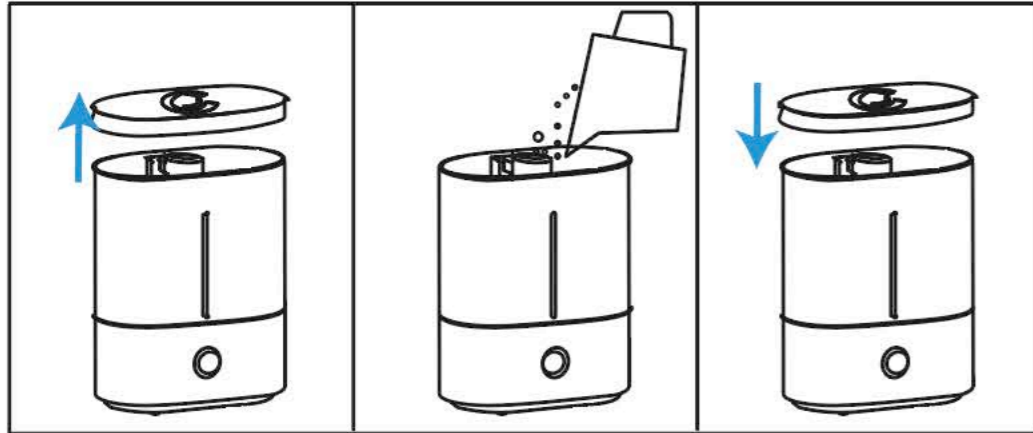
2 Connecting water supply hose

- 1- Connect each end of the water supply hose into the CSpring One® connection valve and the CPAP water chamber's adapter top valve.
- 2- Press the panel connect valve button, to connect hose or release.

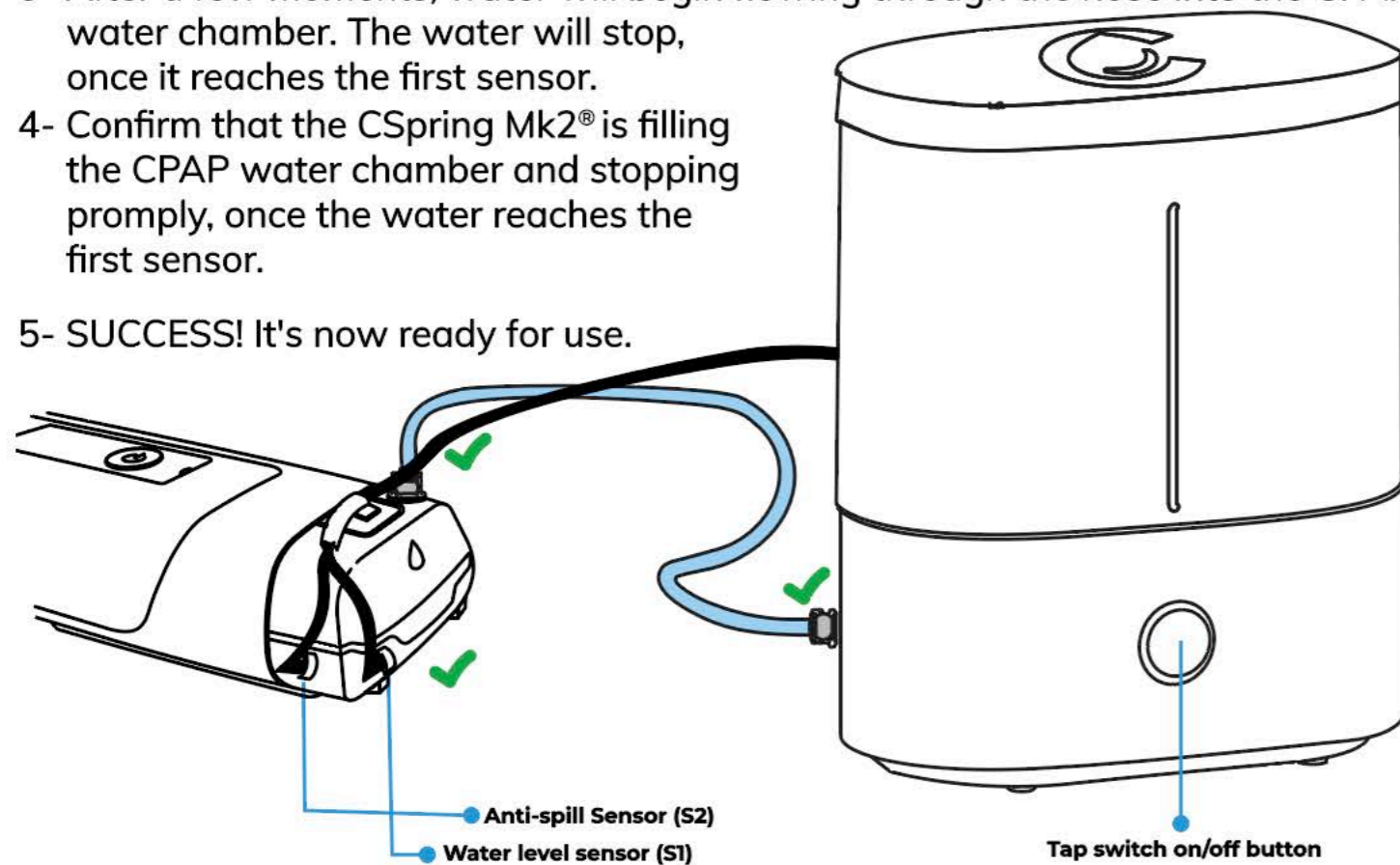


3 How to use

Follow these steps after the CPAP water chamber has been replaced with the one included with your CSpring Mk2 .

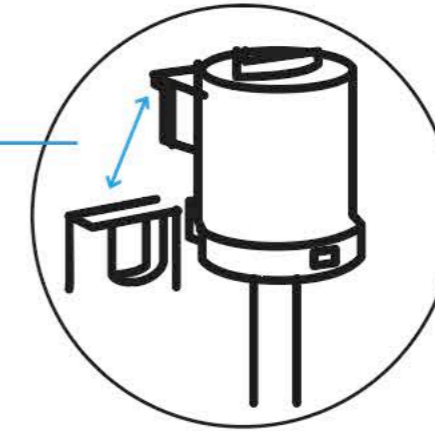


- 1- Take the lid off, initially add 1L of distilled water. The optimal location for testing is next to a sink on a firm surface.
- 2- Press the on/off button once to power on the device. The ambient light will become visible. Tap the on/off button a second time to turn off the ambient light. The device will remain on, with only the UVC light active. The water pump will start automatically.
- 3- After a few moments, water will begin flowing through the hose into the CPAP water chamber. The water will stop, once it reaches the first sensor.
- 4- Confirm that the CSpring Mk2® is filling the CPAP water chamber and stopping promptly, once the water reaches the first sensor.
- 5- SUCCESS! It's now ready for use.

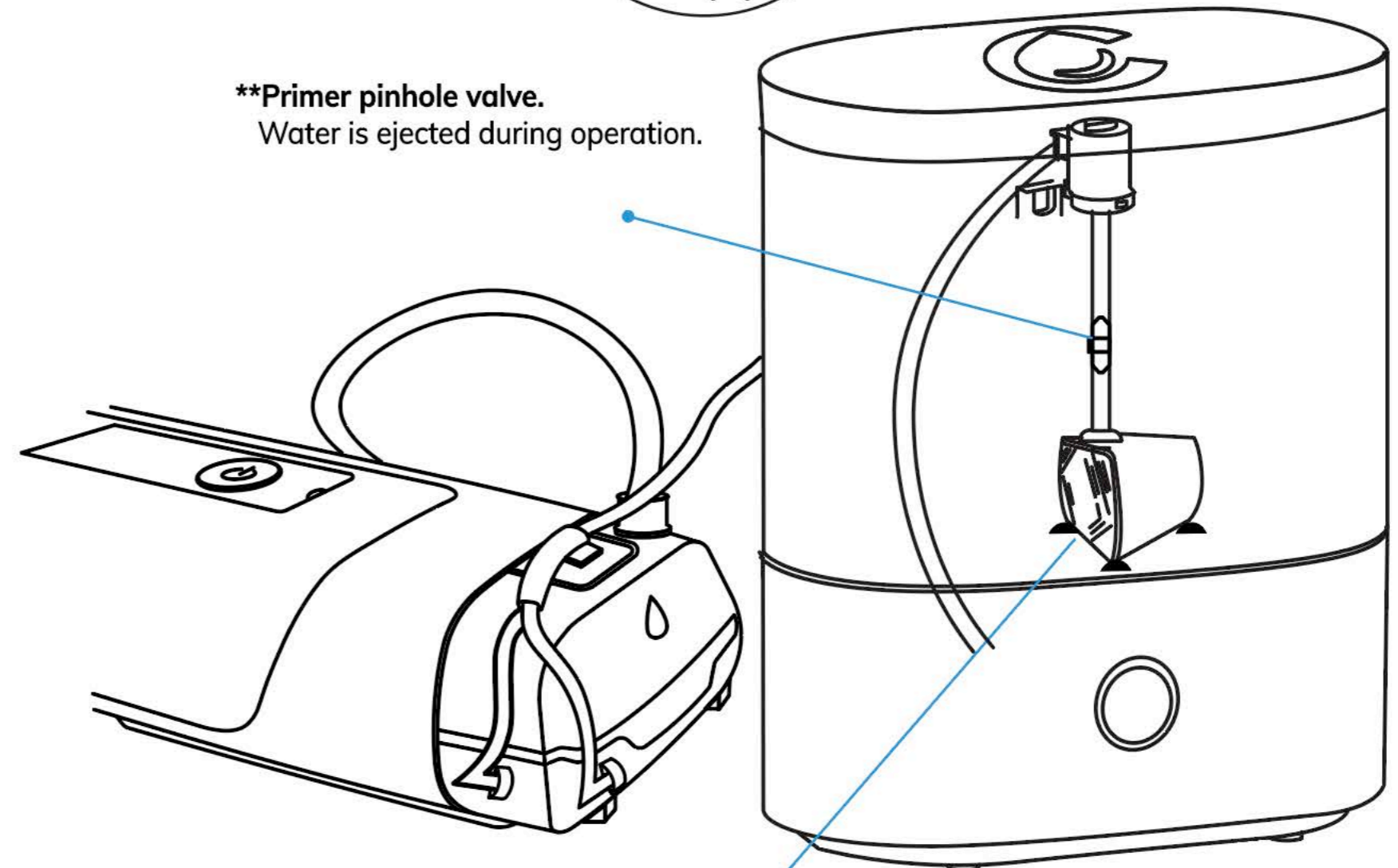


4 Internal pump placement

Bend support part slides into place



**Primer pinhole valve.
Water is ejected during operation.



Place the rubber feet of the pump on the tank floor and press tightly, ensuring they are positioned anywhere but the center hole.



Common Troubleshooting

If you are having problems with your CSpring One, see if one of the solutions below can resolve the problem.

Problem	Solution
CSpring is not powering on.	Make sure that the power adapter is properly connected, both to wall electric receptable and into the CSpring power adaper input.
Water is not coming out from the hose into the water chamber	Verify that both ends of the hose are properly connected into the Cspring and the water chamber intake valve. Make sure that the hose is not bent or kinked.
Water is coming out very slowly	Clean the waterpump filter, verify that the hose is not bent or kinked,
Water spraying our from the hose	This is normal. there is a valve with a pin hoile that allows some water out from the hose to provide proper hose priming.
Noise when first powering on	When the CSpring is turned on for the first time, the pump will make a noise while the hose gets primed with water and gets rid of any air in the line.

If you are still having trouble with your CSpring Device, please contact out support team: Email: support@cspring.us

