

# jumbl®

## Weather-Resistant A-Frame Signboard User Guide

Thank you for purchasing the Jumbl Weather-Resistant A-frame signboard. This User Guide is intended to provide you with guidelines to ensure that operation of this product is safe and does not pose risk to the user. Any use that does not conform to the guidelines described in this User Guide may void the limited warranty. Please read all directions before using the product and retain this guide for reference. This product is intended for household use only. This product is covered by a limited one-year warranty. Coverage is subject to limits and exclusions. See warranty for details. We have designed this sign to be 100% waterproof to provide a layer of protection for your marketing materials.

JUMCHH582B / JUMCHH580B

# jumbl®

CUSTOMER SERVICE:  
info@itsjumbl.com  
866-849-3049

Distributed by:  
CSA Marketing, Inc.  
114 Tived Lane East  
Edison, NJ 08837 USA  
JUMBL is a trademark  
of CSA IP Holdings, LLC  
©2019 All Rights Reserved

CSA Marketing UK LTD  
167 Hermitage Road  
Crusader Industrial Estate  
London  
N4 1LZ  
United Kingdom

www.itsjumbl.com

## Safety Instructions

Please read the following information carefully before using this product to ensure safety

Use this product only for its intended purpose as described in this user guide.



Do not operate this product when parts are missing or broken.



To reduce the risk of injury, do not allow children to play with this product. Close supervision of children is necessary when the product is used near children.



If this product requires service, bring to a qualified professional.



JUMCHH582B / JUMCHH580B

# jumbl®

## Weather-Resistant A-Frame Signboard

### Assembly Instructions

## Features

- Made of sturdy high-density polyethylene material
- Foldable construction for easy storage
- A-frame design and non-slip base ensure stability
- Double-sided; accommodates two signs
- Built-in carrying handle
- Can be filled with water for more stability to withstand strong wind (Figure 4 & 5) JUMCHH580B: 2.6 gal. water capacity; JUMCHH582B: 1.6 gal. water capacity
- 100% weather-resistant PVC covers protect the signs (Figure 6)
- Two or more signboards can be connected by chains (not included) (Figure 7)

jumbl

## Features



jumbl

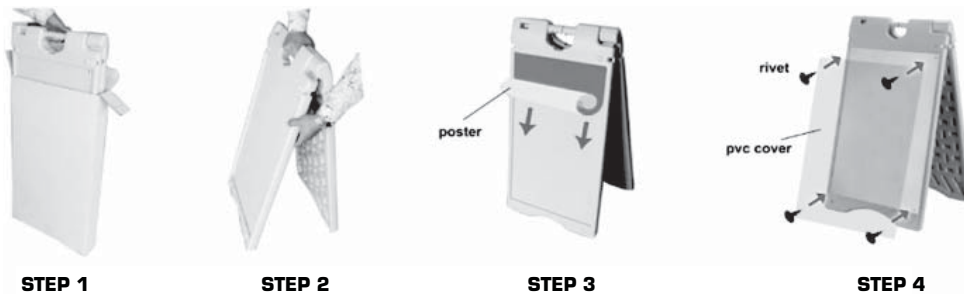
## Set-Up Instructions

Step 1: Remove signboard from package

Step 2: Unfold and place it on the ground / sidewalk

Step 3: Place your poster on panel

Step 4: Position the PVC cover over your poster and attach using the rivets supplied



jumbl

## Specifications

### JUMCHH580B

- Sign face for poster dimensions: 22" x 28" (56 x 72 cm)
- Frame dimensions: 24" x 37.5" (61 x 95 cm)
- Overall dimensions: 24" x 18" x 37.5" (61 x 45.6 x 95 cm)
- Folded dimensions: 24" x 3" x 37.5" (61 x 7.8 x 95 cm)
- Product weight: 12.1 lbs. (5.5 kg)

### JUMCHH582B

- Sign face dimensions: 15.7" x 26" (40 x 66 cm)
- Frame dimensions: 17.7" x 33.6" (45 x 85.4 cm)
- Overall dimensions: 17.7" x 15.6" x 33.6" (45 x 39.6 x 85.4 cm)
- Folded dimensions: 17.7" x 3" x 33.6" (45 x 7.8 x 85.4 cm)
- Product weight: 7.7 lbs. (3.5 kg)

jumbl