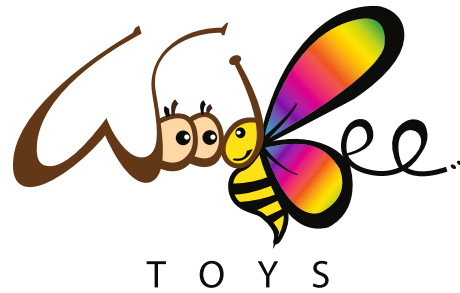


Swings and monkey bar » Wooden swing

Wooden  
Swing



T O Y S

# Assembly Instruction Manual



Children's free play



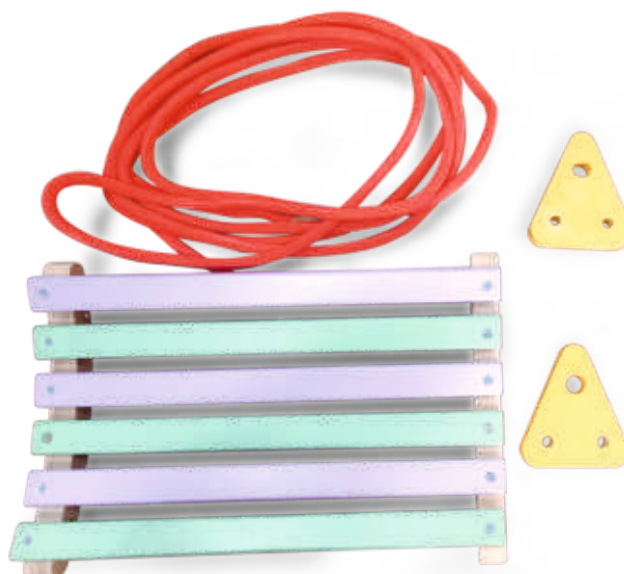
Stimulates spinal control



Promotes balance and independence



Strengthens Gross motor skills

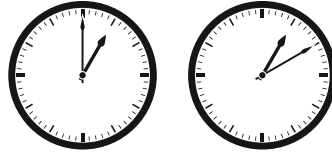


woodbeetoys\_official



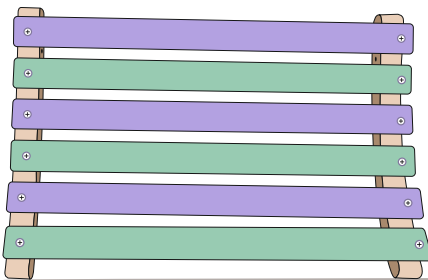
Woodbee Toys

# Wooden swing Assembly Instruction Manual

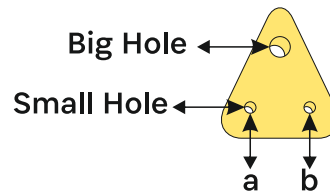


Assembly time : Approx 10 mins.

## List of Items



(a)  
1 No.  
Swing



(b)  
2 Nos.  
Triangle  
Socket



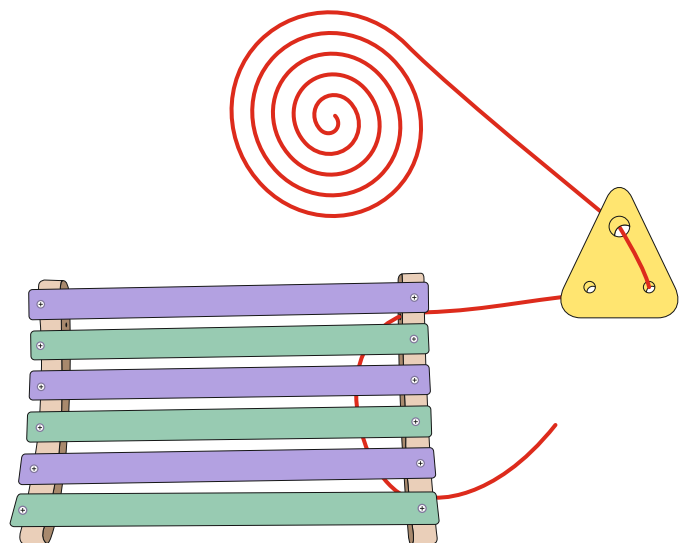
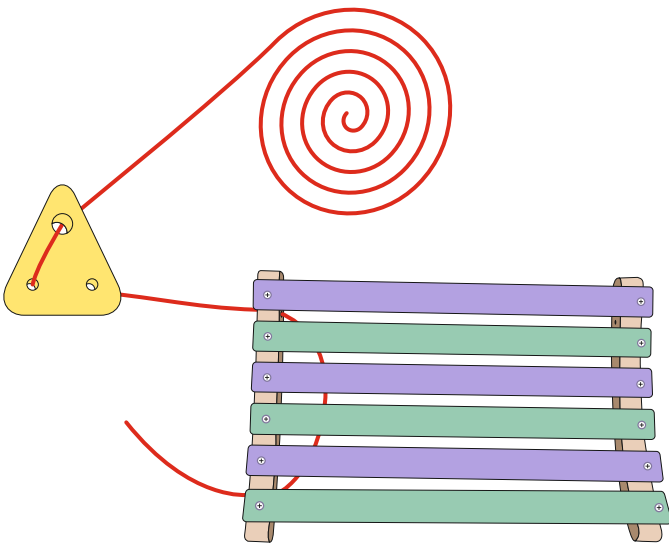
(c)  
15 ft.  
(48.75 mtrs.)  
Rope

### Note :

- b) Please ensure availability of all materials listed before starting assembly.

### Step 1

- (I) Insert the rope to top big hole of the triangle socket and pullout opposite side to insert down to small hole (a) and pull outside.
- (ii) Insert the rope to right side top hole of the swing and pull it out and insert it in right side bottom hole and take outside. (same as both side of swing)



## Step 2

- (I) After completing the step 1 and use the rope to insert it to the small hole (b) belong to triangle socket and pull it opposite side.
- (ii) insert the rope in between the rope already fixed in step 1 and make a corner knot to tighten it. (make the same as other side too)

