

Assembly Instruction Manual



Horse Frame
1 No.



Handle rod
1 No.



Foot rod
1 No.

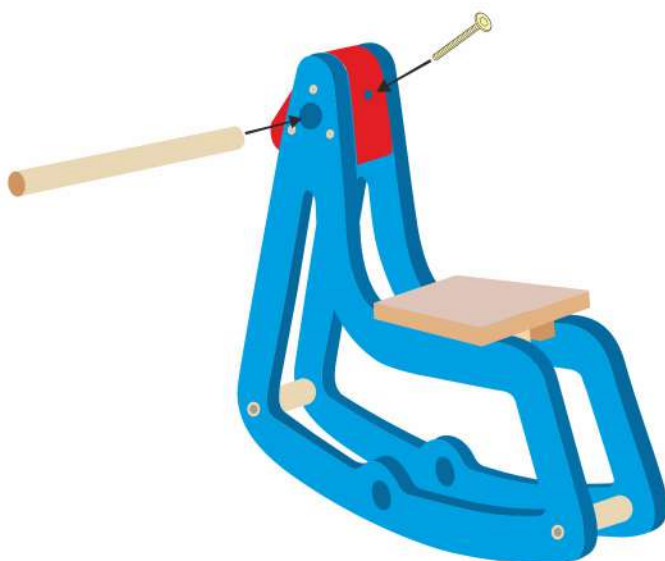


Screw
3 Nos.

Please ensure availability of all materials listed before starting assembly.

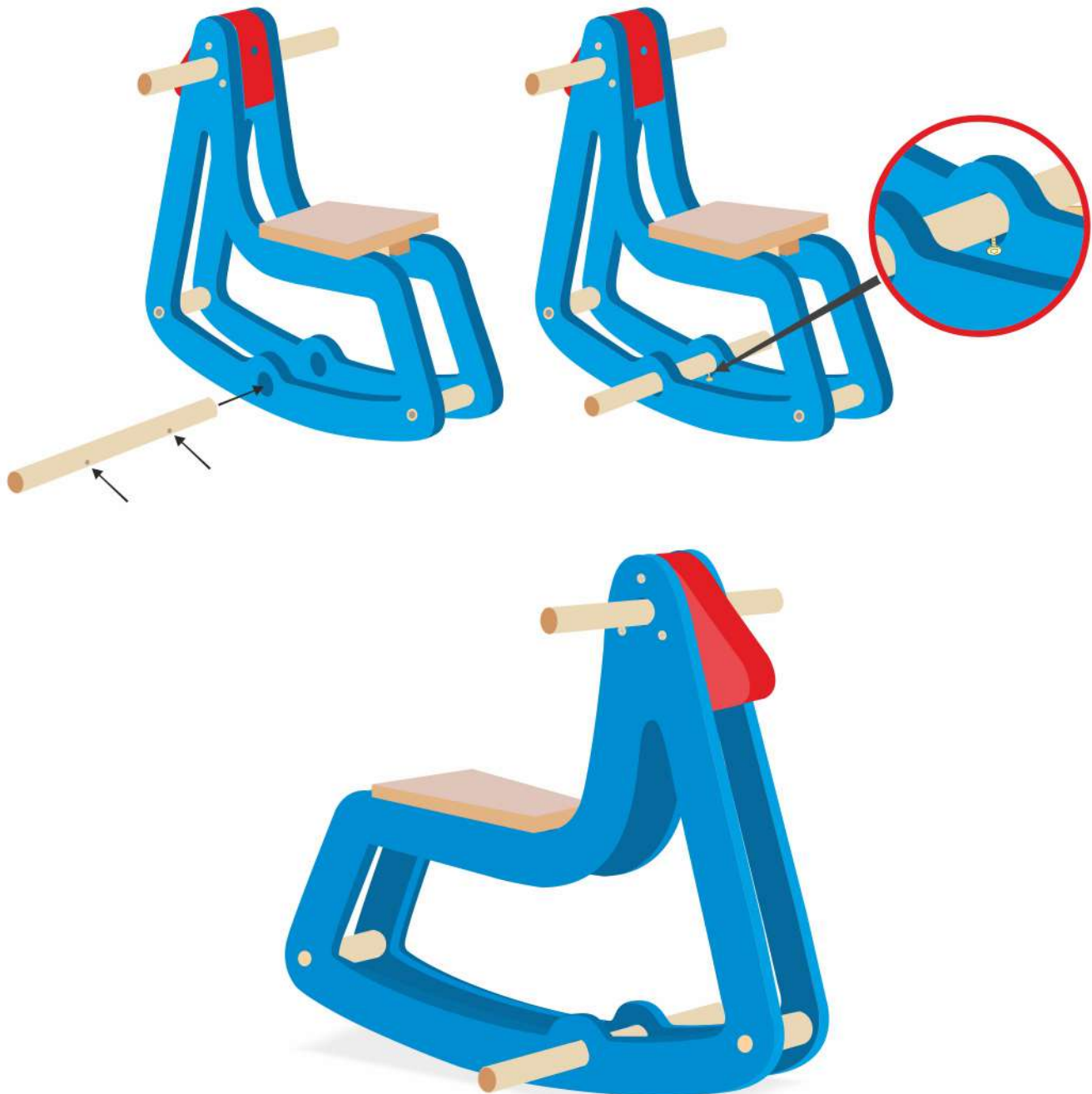
Step 1

Insert the handle (wooden rod) inside the red colour horse head.
Screw the wooden rod from the ball of the red head using the screw provided.



Step 2

Insert the footrest (wooden rod) at the bottom of the stallion rocker frame.
The stopper screws has to be screwed on the inside of the horse
as shown in the figure.



**CAUTION NOTE: CHECK THE SCREWS TIGHTNESS BEFORE EVERY USE.
ENSURE THE RODS ARE NOT ROTATING**

Now Ready to Play...

"Parental supervision
necessary at all times"

