

TRACKER

SAFE

**OWNER USE
AND
CARE MANUAL**

MODEL:

TOPS-01C

Tracker Safe LLC
6317 NE 63rd Street
Vancouver, WA 98661
(360) 213-0363
www.TrackerSafe.com

TABLE OF CONTENTS

What's Included with Your Safe.....	Page 2
Safe Identification.....	Page 3
Opening your Safe for the First Time.....	Page 4-5
Operating the Keypad.....	Page 6
Programing Your Code/Changing Your Code.....	Page 7
Locking the Safe.....	Page 8
Sound ON / OFF.....	Page 8
Tampering Lockout Period.....	Page 8
Low Battery Warning.....	Page 8
Changing the Batteries.....	Page 8
Elastic Straps and Interior Pocket.....	Page 8
Security Cable and Carrying Cable.....	Page 9
Warranty.....	Page 10
Warranty Registration Form.....	Page 11

WHAT'S INCLUDED WITH YOUR SAFE

(Qty 1) Cable

(Qty 1) Carry Cable

(Qty 2) Keys

(Qty 1) Pocket

(Qty 2) Elastic Straps

Fill this out for future reference.

(Do not store manual in the safe)

Serial Number:

Key Number: *(if applicable)*

Combination:

Original Receipt: *(Attach Here)*

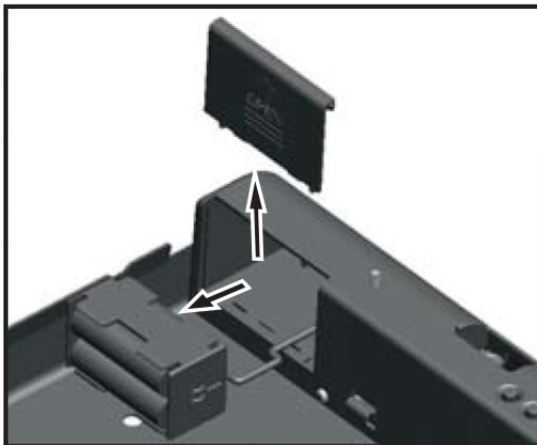
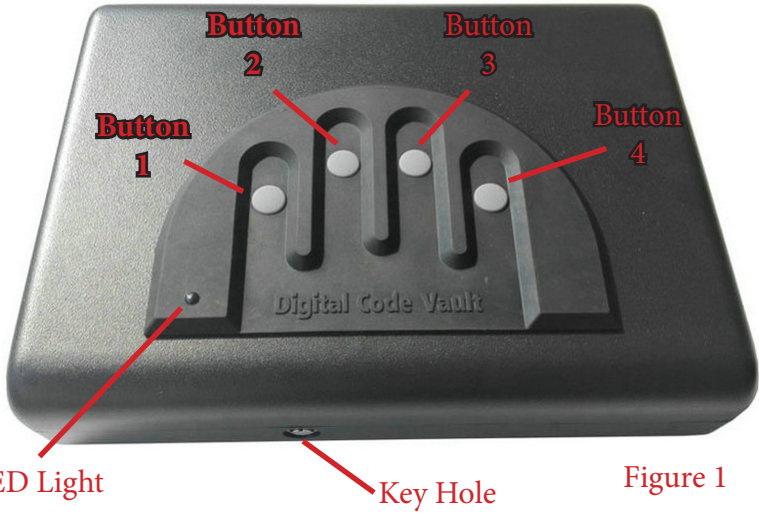
Tracker Safe LLC
6317 NE 63rd Street
Vancouver, WA 98661
(360) 213-0363
www.TrackerSafe.com

OPENING YOUR SAFE FOR THE FIRST TIME

- 1) Locate the supplied keys from the packaging and set the safe on a flat surface.
- 2) Insert the key into the lock and turn the key clockwise (to the right) until you hear a click (about a quarter turn).
(See Figure 1 & Figure 2 on page 5)
- 3) Remove the key by turning it counter-clockwise (to the left).
- 4) Once the key is removed, you may lift the lid completely open.
- 5) The battery compartment is located inside the safe on the right. Gently slide the cover cover up and remove it from the interior.
(See Figure 3 on page 5)
- 6) Pull on the ribbon to remove the battery holder. Insert four (4) AA **alkaline** batteries with a “use date” of at least five (5) years in the future. Be mindful of the battery orientation.

(Recommended battery brands: Duracell™, Energizer™, Eveready™)
- 7) Insert the battery holder into the battery compartment.
- 8) Re-install the battery cover and slide it closed.

OPENING YOUR SAFE FOR THE FIRST TIME



OPERATING THE KEYPAD

The buttons are not numbered but for ease of explanation we will assign numbers to the buttons. Starting from left and going to the right, we will label the buttons ONE (1), TWO (2), THREE (3), and FOUR (4). See Figure 4 below.

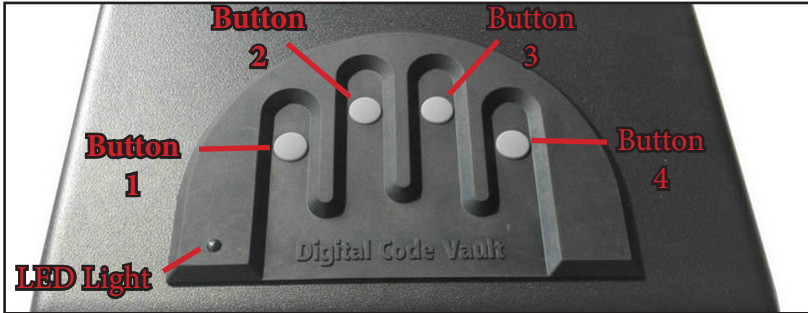


Figure 4

The factory code is 1-2-3-4.

WAKE UP BUTTON PRESS: *Please read!*

The first button you press wakes up the keypad. It does not matter which button you press first. It could be any of the four (4) buttons. After you press and release a button then you may enter the code to open the safe. For example, if I were to open the safe and the code was the factory code, I would press and release “button 1” once to wake up the keypad, then I would press and release “button 1” again, then press and release “button 2”, then press and release “button 3”, and then press and release “button 4”. The safe would then open. You could also use button 2, 3, or 4 for the wake up button press. You should factor this wake up button press into your personal code so that it may become part of the habit of opening your safe.

Valid Entry: *Please read!*

Each time you press and release a button(s) it is called an entry. The safe may have three (3) to six (6) entries for the code.

Multiple Button Entry: *Please read!*

You may use multiple buttons at the same time as a single entry. For example, you may press and release the “button 1” and “button 2” at the same time.

PROGRAMMING YOUR CODE

CHANGING YOUR CODE

Open the safe with the key or the factory code. Make sure batteries are installed. (See page 4 and 5 *Opening Your Safe for the First Time*)

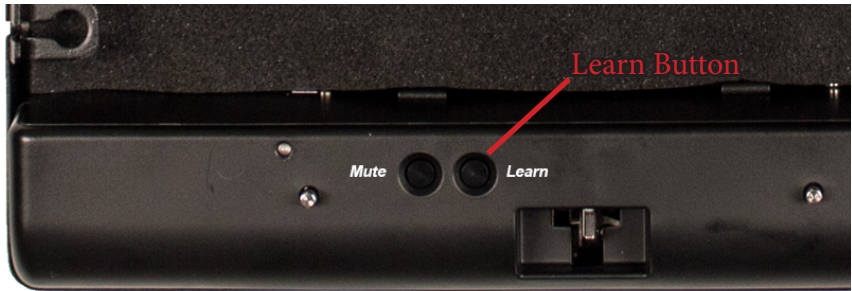


Figure 5

1) Press and Hold the “LEARN” Button for three (3) seconds. The green light will blink twice and there will be two (2) audible “beeps” and the light will turn red. Release the button. (See Figure 5 above)

2) Enter New Code (Three (3) to Six (6) entries).

3) Press and Hold the “LEARN” Button again for three (3) seconds. The red light will flash and you will hear two (2) audible “beeps”. Then release the button.

4) Enter your New Code again to confirm it.

5) Then Press and Hold the “LEARN” Button a third time for three (3) seconds. The light will blink green five (5) times and you will hear five (5) audible “beeps”. This confirms that the new code has been accepted.

If the red light blinks four (4) times with four (4) audible “beeps” then there was an error in changing the code. The old code is still active. Start over at step one (1) again.

LOCKING THE SAFE

- 1) Close the lid and press firmly on the lid. You will hear a “Click”.
- 2) Check to make sure it is locked by lifting up on the lid.

SOUND ON/OFF

Turn Sound OFF: Press and hold the “MUTE” button for FIVE (5) seconds.

Turn Sound ON: Press and hold the “MUTE” button for FIVE (5) seconds.

TAMPERING LOCKOUT PERIOD

Tampering protection: If SIX (6) incorrect codes are attempted in a row, the safe will lock out for a period of FIVE (5) minutes in which no codes may be entered. If a button is pressed during the tampering lock out period the safe will “beep” two (2) times.

LOW BATTERY WARNING

The safe’s red light will flash THREE (3) times and “beep” THREE (3) times when the keypad is operated to indicate a low battery.

CHANGING THE BATTERIES

Please refer to page 4: Opening your safe for the first time.

At least once a year, replace the four (4) AA alkaline batteries with batteries that have a “use date” of at least 5 years in the future. (Recommend: Duracell™, Energizer™, Eveready™)

ELASTIC STRAPS & INTERIOR POCKET

To Remove:

Press down on the metal hoops near the side hooks then pull toward the center of the safe. Do this to both sides.

To Install:

Hook one of the metal hoops under one of the side hooks. Then pull the other metal hoop to the other side hook and push it down and under the hook. Make sure to keep tension on the first hook.

(See Figure 6 on page 9)

SECURITY CABLE & CARRYING CABLE

SECURE YOUR SAFE:

Using the Security Cable: (See Figure 6 & 7 below)

- 1) Wrap the security cable around a secure object.
- 2) Run the end of cable through the loop end of the cable and pull tight.
- 3) Open the safe and place the end of the cable (not the loop) through the left side slot in the back of the safe.
- 4) Close the safe lid and lock the safe.
- 5) Check to make sure the cable is secured by pulling on the safe.



Figure 6

SECURE YOUR SAFE:

Using bolt holes:

The safe has two pre-drilled holes for bolting to an object.
(hardware not included)



Figure 7



Figure 8

CARRYING CABLE:

Using the Carrying Cable:

- 1) Open the safe and insert one end of the cable into one of the eyelets on the left side of the safe by putting the metal cable end through the hole in the safe.
- 2) Repeat this again for the other end of the cable and the other hole on the safe.
- 3) Close the safe lid and lock the safe.
- 4) Check to make sure the cable is secured by pulling on the cable.
(See Figure 8 above)

WARRANTY

LIMITED WARRANTY

Tracker Safe hereby warrants to the original purchaser that each new safe will be free from defects in materials and craftsmanship for one (1) year. This warranty applies only to safes located in the United States and that have been used for Residential use only.

Safe Contents: This warranty only applies to the Tracker Safe itself; the warranty does not extend to the personal property stored in the safe.

Tracker Safe's obligation under this Limited Warranty is contingent upon proper use, installation, and maintenance of the safe and does not apply to the safe or parts that have been misused, neglected, or exposed to unreasonable wear and tear, or exposed to unusual or extreme environments. Modifying or changing the safe in ways that alter or effect the safe's intended operation or use will void this warranty. The decision to repair a safe in purchaser's home, at the factory, or to replace the safe, is solely that of Tracker Safe. If the safe is to be repaired at the factory or replaced, Tracker Safe will pay for the freight back to the factory. The purchaser is responsible for packaging the safe at their own expense. Tracker Safe does not cover any costs to package, remove or install the safe.

To receive support under Tracker Safe's Limited Warranty the purchaser must provide the following:

- 1) Proof of Purchase
- 2) Warranty Registration Form

Warranty Registration Form: The warranty registration form is located in the Tracker Safe Owner Use and Care Manual that came with the safe. To validate this warranty, the original purchaser must fill out the warranty registration form and mail it to Tracker Safe within sixty (60) days of purchase (or register online at trackersafe.com).

The above warranty is given in place of all other warranties and assurances, whether expressed or implied, including warranties to fitness for purpose, quality, or merchantability. Tracker Safe accepts no liability, under any circumstances, for any incidental or consequential damage or loss suffered by anyone, or to any property, as a result of using or being unable to use the safe.

Any claims arising from this limited warranty shall be resolved in the State of Washington and Washington law will apply to any dispute.

**TRACKER SAFE
WARRANTY REGISTRATION FORM**

Please provide us with a copy of your receipt along with this registration form within sixty (60) days from original purchase date. *Or Register online at TrackerSafe.com*

Name: _____

Address: _____

City: _____

State: _____ Zip: _____

Phone: _____

Email: _____

Date of Purchase: _____

Model Number: _____

Safe Serial Number: : _____

Purchased From: _____

Comments:

Mail to:
Tracker Safe LLC
6317 NE 63rd Street
Vancouver, WA 98661