

# **TRACKER**

**SAFE**

**OWNER USE  
AND  
CARE MANUAL**

**MODEL:**

**DDPS-01B**

**Tracker Safe LLC**  
6317 NE 63rd Street  
Vancouver, WA 98661  
(360) 213-0363  
[www.TrackerSafe.com](http://www.TrackerSafe.com)

## TABLE OF CONTENTS

What's Included with Your Safe.....	Page 2
Safe Identification.....	Page 3
Setting Up the Safe.....	Page 4-5
Fingerprint Registration.....	Page 6
Enrolling Administrator Fingerprints.....	Page 7
Enrolling User Fingerprints.....	Page 8
Opening the Safe After Setup.....	Page 8
Locking the Safe.....	Page 8
Trouble Enrolling Fingerprints.....	Page 9
Deleting Fingerprints.....	Page 9
Sound ON / OFF.....	Page 9
Changing the Batteries.....	Page 9
Mounting the Safe.....	Page 10-11
Low Battery Warning.....	Page 12
Warranty.....	Page 12
Warranty Registration Form.....	Page 13

### WHAT'S INCLUDED WITH YOUR SAFE

(Qty 2) Keys

(Qty 1) Mounting Bracket

(Qty 3) Safe-Bracket Screws

(Qty 4) Mounting Bracket Screws

Fill this out for future reference.

*(Do not store manual in the safe)*

Serial Number:

---

Key Number: *(if applicable)*

---

Combination:

---

Original Receipt: *(Attach Here)*

**Tracker Safe LLC**  
6317 NE 63rd Street  
Vancouver, WA 98661  
(360) 213-0363  
[www.TrackerSafe.com](http://www.TrackerSafe.com)

## SETTING UP THE SAFE

### Opening the safe with a key:

- 1) Locate the supplied keys from the packaging and set the safe on a flat surface on its back with the drawer facing up.
- 2) Insert the key into the lock and turn the key clockwise (to the right) until it stops (about a quarter turn). Do Not Force the key to turn. You may damage the key. (See Figure 1)
- 3) With the key inserted and turned, pull gently on the drawer. The drawer will pivot and then stop on the bumper spring.
- 4) Now that you see how the drawer opens, you can remove it to get to the battery compartment. (*the drawer must be removed to access the battery compartment*)



Figure 1

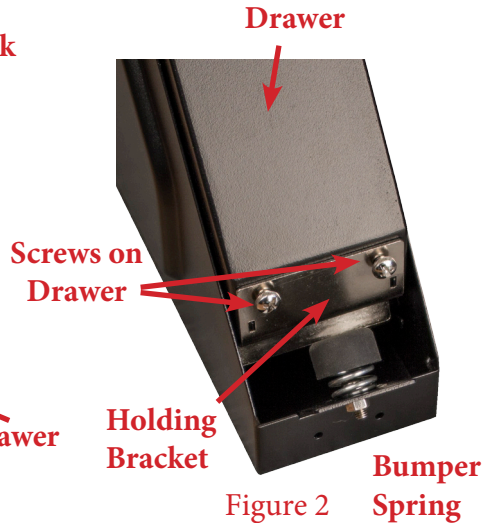


Figure 2

### Removing the Drawer:

- 5) Locate the two (2) screws on the bottom of the drawer and remove them with a phillips head screwdriver. Save screws for re-assembly. (See Figure 2)
- 6) Remove the holding bracket. Set aside.
- 7) Follow steps 2-3 to open the drawer with the key again. Then pull the drawer up and away to remove it and set it aside.

## SETTING UP THE SAFE

8) The battery compartment is located at the top of the safe on the underside. Gently push the cover's clip to the back of the safe and pull the cover down and away. (See Figure 3 below)



Figure 3

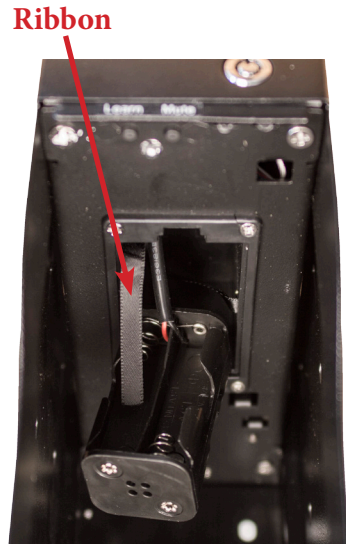


Figure 4

9) Pull on the ribbon to remove the battery holder.  
(See Figure 4 above)

10) Insert four (4) AA **alkaline** batteries with a “use date” of at least five (5) years in the future. Be mindful of the battery orientation.

*(Recommended battery brands: Duracell™, Energizer™, Eveready™)*

10) Insert the battery holder back into the battery compartment.

11) Re-install the battery cover by inserting the cover's tabs in the slots and rotating it place until the clip inserts into it's slot.

12) Re-install the drawer or leave it un-installed to mount the safe. See “Mounting the Safe” on page 10 an 11. You will need to remove the drawer to mount the safe on the mounting bracket.

### !!!!!! WARNING !!!!!

**If you do not register any fingerprints then the safe will open if the “Start” button is pressed.**

### **MAKE SURE YOU REGISTER AT LEAST ONE (1) FINGERPRINT.**

There are TWO (2) types of fingerprint registrations:

- 1) “Administrator” Fingerprints
- 2) “User” Fingerprints

The first TWO (2) fingerprints registered are “Administrator” fingerprints. These “Administrator” fingerprints are required prior to enrolling each “User” fingerprint. “User” fingerprints cannot enroll more “User” fingerprints.

In order to register “User” fingerprints, an “Administrator’s” fingerprint must first be entered.

The safe can hold a total of 120 fingerprint registrations.

**FOR BEST SUCCESS:** After you register your TWO (2) “Administrator” fingerprints, try registering multiple fingerprints with the same finger but register each at different angles on the sensor. For example, register one straight on the sensor then rotate your finger 10-20 degrees and register another fingerprint. Then again rotate 10-20 degrees and register another fingerprint. You may also move you finger further up on the sensor or further back on the sensor and register those locations. The more registrations you do with the same finger but in different orientations the better your success rate will be for entry.

## ENROLLING ADMINISTRATOR FINGERPRINTS

### READ THIS PROCESS COMPLETELY BEFORE STARTING

1) Press and release the “ENROLL” button located on the inside of the safe. You will hear ONE (1) beep and the LED light will begin to flash green. (See Figure 3)

2) Place your finger on the sensor and HOLD for over TWO (2) seconds. You will hear ONE (1) beep and then another TWO (2) quick beeps. The LED light will flash green for a successful enrollment. The LED light will flash red for a failed enrollment and will wait for another attempt.

*NOTE: For better enrollment success, once you place your finger on the sensor, DO NOT MOVE, DO NOT ROTATE, DO NOT SHAKE, DO NOT SLIDE, and DO NOT TWIST your finger. Keep it as steady as possible until the LED light turns off.*

**3) Repeat this process one more time for setting your TWO (2) “Administrator” fingerprints. The “Administrator” fingerprints must first be used before “User” fingerprints can be enrolled.**

See next page for enrolling “User” fingerprints.

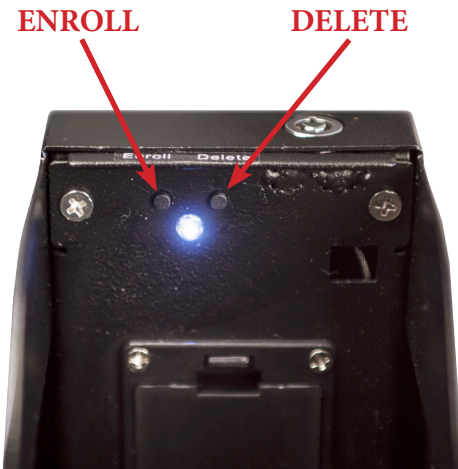


Figure 3 - Underside



Figure 4 - Front of Safe

## ENROLLING USER FINGERPRINTS

### READ THIS PROCESS COMPLETELY BEFORE STARTING

- 1) Press and release the “ENROLL” button located on the inside of the safe. You will hear ONE (1) beep and the LED light will begin to flash green and the sensor will light up indicating the enrollment process has started.
- 2) Place one of the two registered “**Administrator**” fingers on the sensor. You will hear TWO (2) beeps indicating that a “User” fingerprint may now be enrolled.
- 3) Now place the “**User**” finger on the sensor and HOLD for over TWO (2) seconds. You will hear ONE (1) beep and then another TWO (2) quick beeps. The LED light will flash green for a successful enrollment. The LED light will flash red for a failed enrollment and will wait for another attempt.

*NOTE: For better enrollment success, once you place your finger on the sensor, DO NOT MOVE, DO NOT ROTATE, DO NOT SHAKE, DO NOT SLIDE, DO NOT TWIST your finger. Keep it as steady as possible until the LED light turns off.*

Repeat this process for up to ONE HUNDRED AND EIGHTEEN (118) “User” enrollments.

## OPENING THE SAFE AFTER SETUP

- 1) Press and release the start button. The LED light flashes green and beeps once. (See Figure 4 on page 7)
- 2) Place and hold your finger on the sensor. The LED light will flash green two times and will hear two beeps. Then the safe will open.

## LOCKING THE SAFE

- 1) Close the drawer. You will hear a “Click”.
- 2) Check to make sure it is locked by pulling down on the drawer.



## TROUBLE ENROLLING FINGERPRINTS

### **IMPORTANT SUGGESTIONS:**

For better enrollment success, once you place your finger on the sensor, DO NOT MOVE, DO NOT ROTATE, DO NOT SHAKE, DO NOT SLIDE, and DO NOT TWIST your finger. Keep it as steady as possible until the LED light turns off.

- **Finger Location:** Try registering multiple fingerprints with the same finger but register each at different angles on the sensor.
- **Women & Children:** If you are having trouble registering your index finger, try using your thumbs.
- **Dry Fingers:** Try breathing on your fingers before putting them on the scanner. The extra moisture sometimes helps with fingerprint recognition.
- **Age:** Fingerprints get thinner with age and sometimes certain fingerprints do not present enough unique “identifiers” that are required to enroll a user. This is the limiting factor of fingerprint recognition technology to date.

## DELETING FINGERPRINTS

You cannot delete just a single fingerprint. ALL of the fingerprints enrolled will be deleted.

- 1) First, press and hold the “delete” button.
- 2) Then press and release the “start” button.

**Warning: If no fingerprints are enrolled, the safe will open to the press of the start button.**

## SOUND ON/OFF

**Turn Sound OFF:** Press and hold the “DELETE” button for ONE (1) second and then release.

**Turn Sound ON:** Press and hold the “DELETE” button for ONE (1) second and then release.

## CHANGING THE BATTERIES

**Please refer to page 4: Removing the Drawer**

At least once a year, replace the four (4) AA alkaline batteries with batteries that have a “use date” of at least 5 years in the future.  
(Recommended battery brands: Duracell™, Energizer™, Eveready™)

## MOUNTING THE SAFE

### **Mounting the Safe:**

***\*\*ATTENTION\*\*:*** *The safe must be mounted in the vertical position with the bracket attached to the back of the safe or on either side (left or right). The drawer needs gravity to fully release.*

1) Choose a location for the safe and the bracket. Make sure that the safe's drawer has enough clearance to drop open.

2) Fasten the mounting bracket to the desired location using the mounting holes in the bracket. The screws provided are for wood surfaces. (See Figure 5 for hole locations)

*(If you are mounting to a different material then please purchase the appropriate hardware from your local hardware store.)*

3) Remove the drawer from the safe. See page 4 for the process.

4) Insert the two (2) bracket hooks through the safe's two (2) vertically cut holes. The safe should be able to hang on the hooks. (See Figures 5 and 6)

5) Locate the three (3) thumb screw holes inside the safe that line up with the bracket holes.

6) From inside the safe, insert one of the three thumb screws into one of the holes that line up with the bracket holes. Turn until tight making sure that the screw is going into the mounting bracket. Repeat for the other two screws.

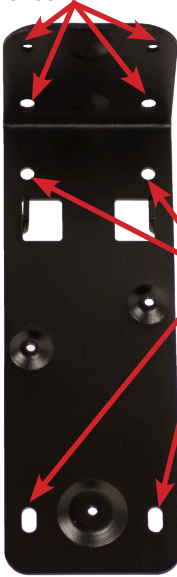
7) Re-install the drawer and the drawer bracket and drawer screws.

8) Test the safe by opening and closing it several times to make sure it is functioning the way you would like.

9) Register additional fingerprints to ensure proper finger placement on the sensor. The mounting location may effect how

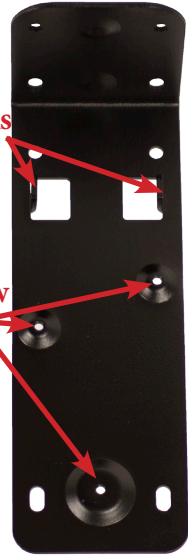
## MOUNTING THE SAFE

Mounting  
Holes



Mounting  
Holes

Hooks



Thumb Screw  
Holes

Figure 5 - Bracket

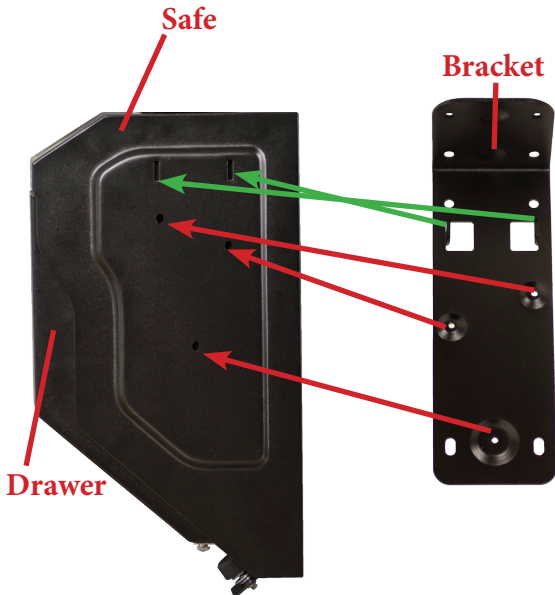


Figure 6 - Safe & Bracket Alignment

## LOW BATTERY WARNING

The safe's red light will flash THREE (3) times and "beep" THREE (3) times when the keypad is operated to indicate a low battery.

## WARRANTY

### LIMITED WARRANTY

Tracker Safe hereby warrants to the original purchaser that each new safe will be free from defects in materials and craftsmanship for one (1) year. This warranty applies only to safes located in the United States and that have been used for Residential use only.

Safe Contents: This warranty only applies to the Tracker Safe itself; the warranty does not extend to the personal property stored in the safe.

Tracker Safe's obligation under this Limited Warranty is contingent upon proper use, installation, and maintenance of the safe and does not apply to the safe or parts that have been misused, neglected, or exposed to unreasonable wear and tear, or exposed to unusual or extreme environments. Modifying or changing the safe in ways that alter or effect the safe's intended operation or use will void this warranty. The decision to repair a safe in purchaser's home, at the factory, or to replace the safe, is solely that of Tracker Safe. If the safe is to be repaired at the factory or replaced, Tracker Safe will pay for the freight back to the factory. The purchaser is responsible for packaging the safe at their own expense. Tracker Safe does not cover any costs to package, remove or install the safe.

To receive support under Tracker Safe's Limited Warranty the purchaser must provide the following:

- 1) Proof of Purchase
- 2) Warranty Registration Form

Warranty Registration Form: The warranty registration form is located in the Tracker Safe Owner Use and Care Manual that came with the safe. To validate this warranty, the original purchaser must fill out the warranty registration form and mail it to Tracker Safe within sixty (60) days of purchase (or register online at [trackersafe.com](http://trackersafe.com)).

The above warranty is given in place of all other warranties and assurances, whether expressed or implied, including warranties to fitness for purpose, quality, or merchantability. Tracker Safe accepts no liability, under any circumstances, for any incidental or consequential damage or loss suffered by anyone, or to any property, as a result of using or being unable to use the safe.

Any claims arising from this limited warranty shall be resolved in the State of Washington and Washington law will apply to any dispute.

**TRACKER SAFE  
WARRANTY REGISTRATION FORM**

Please provide us with a copy of your receipt along with this registration form within sixty (60) days from original purchase date. *Or Register online at [TrackerSafe.com](http://TrackerSafe.com)*

Name: \_\_\_\_\_

Address: \_\_\_\_\_

City: \_\_\_\_\_

State: \_\_\_\_\_ Zip: \_\_\_\_\_

Phone: \_\_\_\_\_

Email: \_\_\_\_\_

Date of Purchase: \_\_\_\_\_

Model Number: \_\_\_\_\_

Safe Serial Number: : \_\_\_\_\_

Purchased From: \_\_\_\_\_

Comments:

---

---

---

Mail to:  
Tracker Safe LLC  
6317 NE 63rd Street  
Vancouver, WA 98661