



K•EYES

DESIGNED IN SAINT TROPEZ' BAY

Reading Glasses Collection
Winter 2024





DESIGN #K39

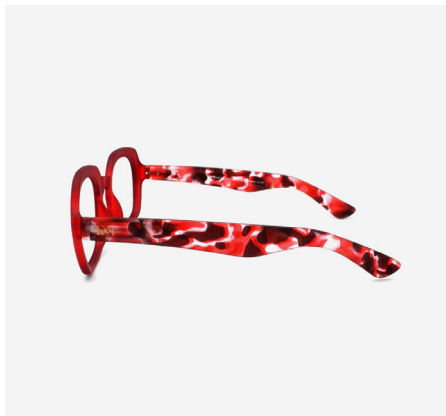
Oversized Round Reading Glasses

The #K39 round reading glass is suitable for medium and wide faces. The frame is thick, either translucent or soft touch, will surprise you with its comfort and lightness.

Ideal for presbyopic women and men with a strong style, this is a quality pair of reading glasses for seeing up close.

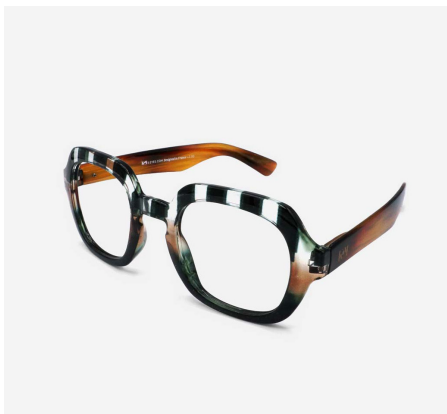
- Round frame
- Flexible arms
- Anti-scratch treatment
- Diopter +1.00 to +3.50

#K39
MONIQUE
Soft touch





#K39
CAROLE



#K39
ISABELLE





#K39
BELLA





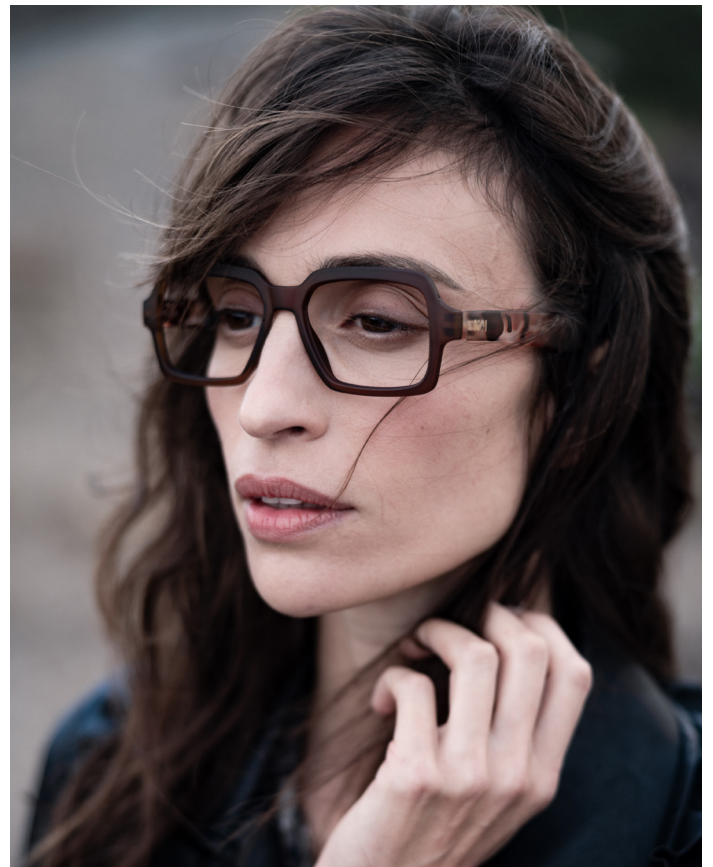
DESIGN #K40

Rectangular Reading Glasses

The #K40 is a rectangular reading glasses ideal for seeing up close and suitable for both presbyopic men and women. Its modern rectangular shape and soft touch for the brown and blue models will surprise you with their comfort and lightness.

- Rectangular frame
- Flexible arms
- Anti-scratch treatment
- Diopter +1.00 to +3.50

#K40
ALAIN
Soft Touch





#K40
GEORGES
Soft Touch



#K40
JOE





**#K40
IVAN**





DESIGN #K41

Oversized Rectangular Reading Glasses

Fall for the new model #K41 of reading glasses for men and women. Its very large rectangular shape which descends on the cheekbones is ideal for square and round faces.

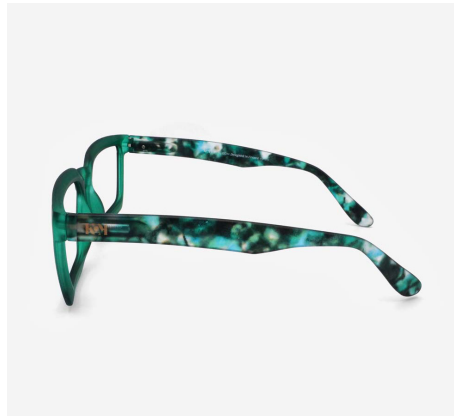
Ultra light and original, these are premium quality reading glasses for seeing up close.

The intense green model has a very soft and comfortable frame.

- Oversized Rectangular frame
- Flexible arms
- Anti-scratch treatment
- Diopter +1.00 to +3.50

#K41

JOAN
Soft Touch





**#K41
WILLY**





#K41
ROBERT





K•EYES

DESIGNED IN SAINT TROPEZ' BAY

www.k-eyes.com

