

DARCHE®

DIRTY DEE +

INSTRUCTION MANUAL



T050801207P

T050801208P

T050801209P

D A R C H E . C O M . A U

INSTRUCTION MANUAL

CONTENTS

- 1 x Dirty Dee + swag
- 1 x Composite swag pole pack (9 sections that make up 3 poles)
- 2 x Trigger lock spreader poles
- 1 x 70mm high-density foam mattress
- 1 x Canvas carry bag
- 11 x Pegs
- 5 x Guy ropes



SCAN TO WATCH
THE VIDEO

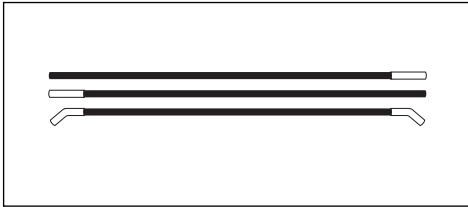
PLEASE NOTE

Prior to first use of the Dirty Dee + swag, it is important to remove the mattress from its compression sleeve and allow it to expand.

Seasoning the swag is not essential but is recommended. For full instructions on seasoning your DARCHE swag, see How to Season Your Swag (page 7).

Step 1

Unroll the swag onto a flat, well-drained area free of sharp objects that may penetrate the swags PVC floor. Each composite pole will be different in length and all correspond to a specific placement on the swag. Refer to the labelling on the poles.

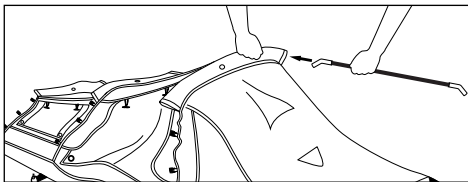


Remove the HEAD pole bundle (3x pole sections) from the pack:

- 2x END section poles (aluminium sleeve on one end of the pole).
- 1 x MIDDLE section pole (angled aluminium sleeves on both ends of the pole)

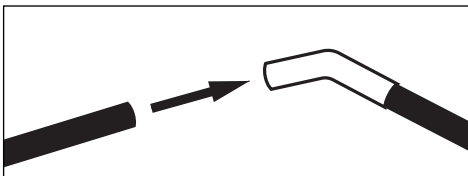
Step 2

Feed the angled middle pole through the sleeve on top of the swag and centre the pole.



Step 3

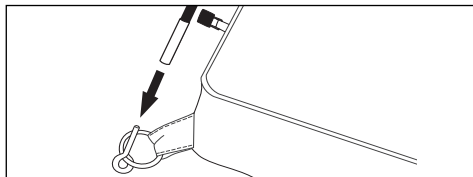
Assemble one END section pole into the MIDDLE section angled pole sleeve.



INSTRUCTION MANUAL

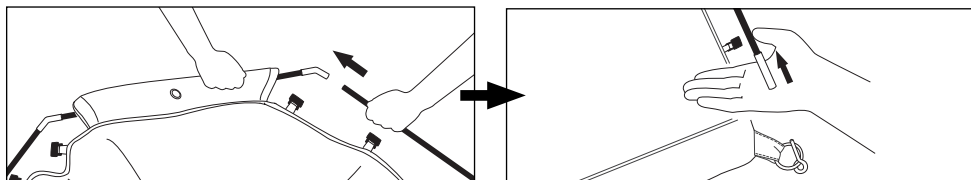
Step 4.

The end of the pole will have the aluminium sleeve to insert the base pin. Insert the first pole end onto the base pin.



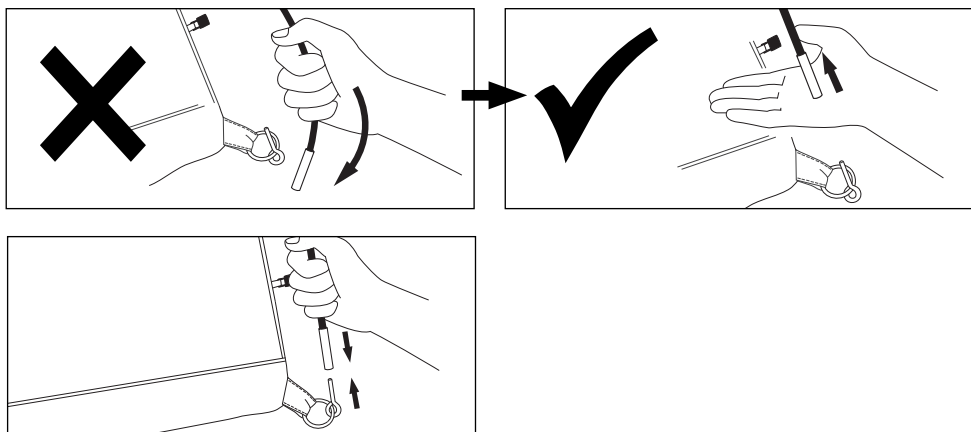
Step 5

Insert the second END pole to the other end of the MIDDLE section angled pole sleeve. Place your palm under the pole end, and push upward until there is a gap between the pole end and the second pin. Insert the second pin.



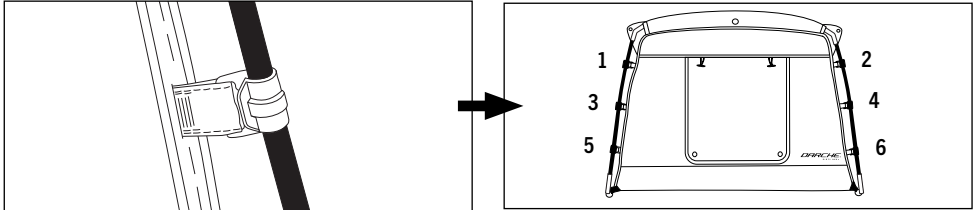
Step 6

Repeat this process for the other CENTRE and FOOT poles.

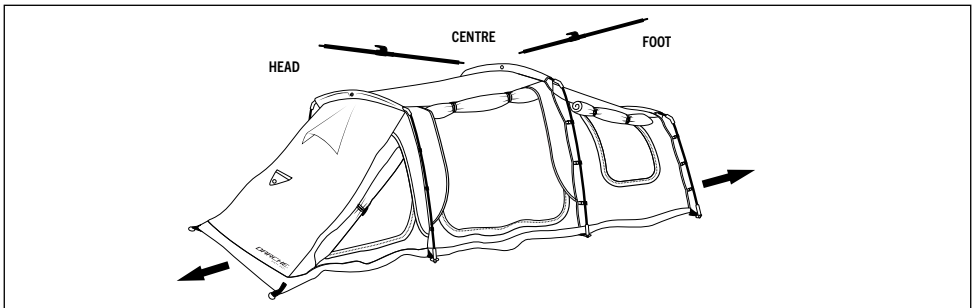


Step 7

Clip the swag to the composite poles one end at a time. A good technique for attaching the clips is to alternate from one side to the other. Top left then top right, second left and then second right and so on.

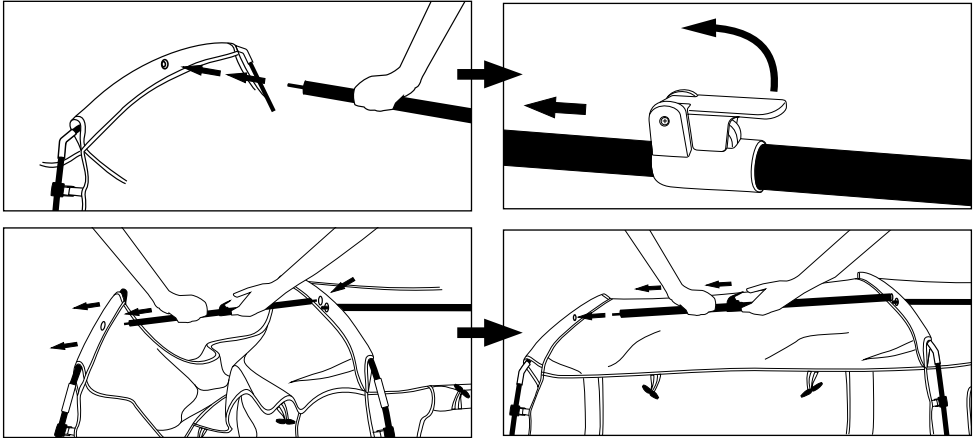


At this point you should have all three composite poles assembled, located in their corresponding positions and have centralised the swag at each point. The clips should all be attached to the composite poles on each side. Stretch out the base of the swag to ease assembly when placing the trigger lock spreader poles.



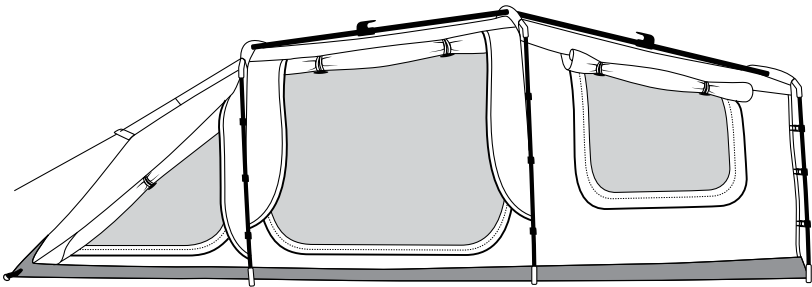
INSTRUCTION MANUAL

Step 8



Insert the trigger lock spreader pole into one of the centre eyelets. Release the trigger to extend the pole and insert into one of the end eyelets. Tension the bar to stretch the swag into shape then lock into position. Repeat this process for the other spreader pole. The guy ropes and pegs can be used if required.

Now your Dirty Dee + swag set up is complete.



PACK DOWN

1. Partially close all the zips, door covers and window flaps, leaving them slightly open will allow for the air to escape while rolling up. Remove pegs and guy ropes if used.
2. Release the trigger of the spreader poles and remove them from the eyelets.
3. Unclip the swag from the composite poles one at a time.
4. Disassemble all of the poles in preparation for step 5 below. Tip: Leave the MIDDLE poles in each sleeve to make things easier for your next trip. Stow the END pole sections in the sleeve along with the MIDDLE pole

5. While the swag is laid out flat, bring any overhanging canvas and ropes into the centre of the swag. Beginning from the Hutch end of the swag, fold the Hutch over onto the main body section then begin rolling up the swag. Roll the swag as tightly as possible to achieve a compact roll. Tip: Using your knees, or two people while rolling, will assist in getting the swag as compact as possible. Just before completing the rolling process, place all the disassembled poles between the fabric and continue the rolling process to the end.
6. Bring the two compression straps together and loop through the double D-rings, do not over tighten the straps.

NOTE

Allow a wet or damp swag and all bedding inside, to dry thoroughly before pack down. If this is not possible, unroll swag as soon as possible. Allow to fully dry out before re-packing and storing.

SPARE PARTS LIST

For a full list of Spare Parts available refer to DARCHE.COM.AU

HOW TO SEASON YOUR DARCHE SWAG

The best way to season your swag is to set up outdoors and completely soak the exterior material of the swag with a hose. Allow the swag to dry completely. Repeat this process 2-3 times. Seasoning the swag will allow the canvas material to swell and will help to fill any stitching holes, providing an additional level of weather protection. Ensure the swag is completely dry before packing away.

CARE & STORAGE INSTRUCTIONS

1. Remove dirt with a soft brush and cold water after use.
2. Do not clean with soap, detergent, petrol, oil or solvents.
3. Ensure swag is completely dry before storing.
4. Do not store directly on concrete floors. A dry shelf in your shed or a cupboard is a perfect spot for your swag when not in use.
5. If spot mould is visible, brush it off with a stiff bristle nylon brush and vacuum the area to get rid of any residual spores.
6. Leaving your swag rolled too tightly for long periods of time may result in the mattress taking a while to bounce back. If it's been a while since your last adventure, open your swag a few days before you leave and allow the mattress to expand. Re-pack your swag and have a great weekend.

MOISTURE/CONDENSATION

Condensation is a natural occurrence in confined areas like swags/tents due to the body releasing more moisture than the canvas can dispose of in cold weather. To minimise the chance of condensation, we recommend slightly opening the window to enable airflow on cold nights.

I N S T R U C T I O N M A N U A L

Designed and tested in Australia for Australian conditions.

A brand by Charles Parsons.

Telephone 1300 367 695 | Email: info@DARCHE.com.au

75 Heyington Avenue, Thomastown VIC 3074, Australia.

DARCHE: LEADERS IN OUTDOOR DESIGN. PROUDLY AUSTRALIAN.

Due to our policy of continual product development,
the specifications, colours and features may vary.

V1-September 2022



D A R C H E . C O M . A U