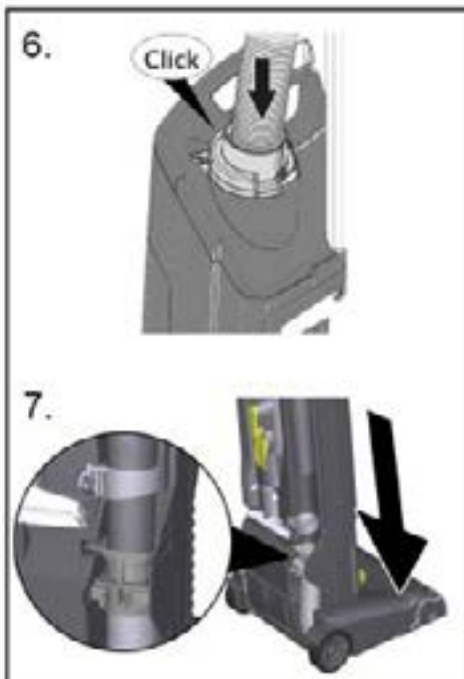


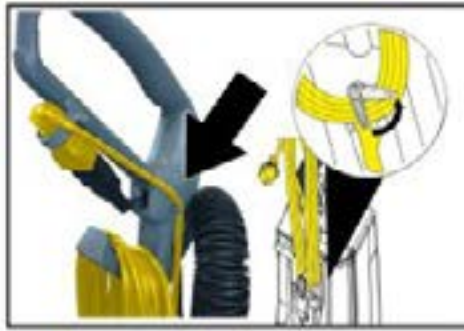
Quick Start Guide CVD Series Vacuums

1. Assembly

1. Flip the handle adjustment lever up (1).
2. Fully insert the metal handle tube into the mounting holes on the back of the unit (2) until it clicks twice.
3. Attach the handle onto the metal handle tube until it clicks in place (3). Ensure that the cable is not jammed or twisted.
4. Pull the completed handle assembly to the first (uppermost) position.
5. Flip the handle adjustment lever down to lock the handle in position (5).



6. Insert the hose into the connection on the top of the unit (6) until it clicks.
7. Place the wand into the lower mounting location on the unit (7).



8. Release the power cable by turning the cable holder.
9. Plug the main power cable into the short cable on the unit.

2. Operating Instructions

1. Unwrap the power cable.
2. Plug the power cable into a wall socket.
3. Turn the unit ON using the switch on the handle.

3. Additional Parts Required

There are no additional parts required for the unit.