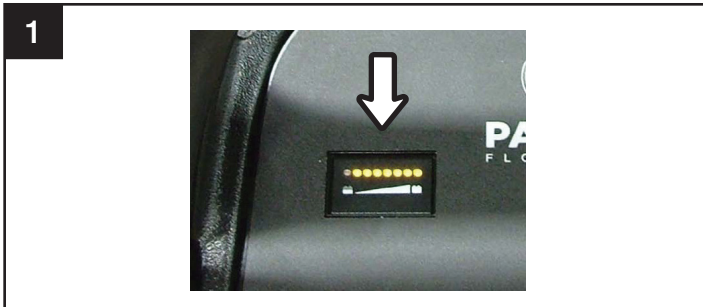


Quick Start Guide

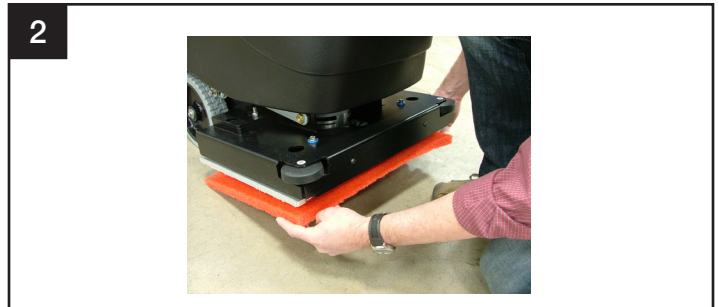
99120ORB



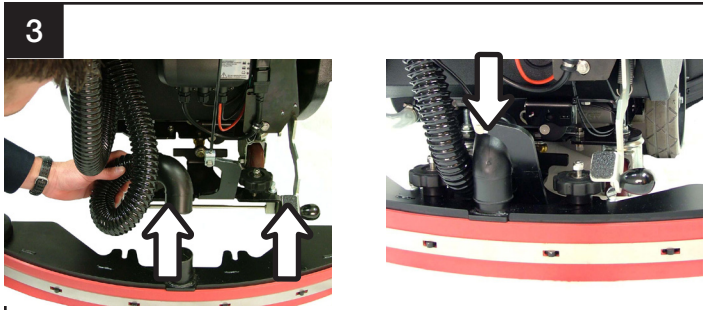
1. Assembly



1
Ensure batteries are fully charged before operating the unit. Refer to the Operations and Maintenance manual for complete charging instructions.

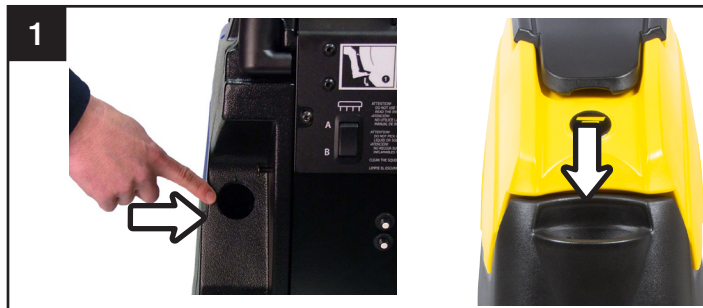


2
To attach the pad, align the front corners of the pad to the front corners of the orbital drive plate and press to attach. Use the foot pedal to lower the scrub deck down onto the pad ensuring alignment from front-to-back and side-to-side.

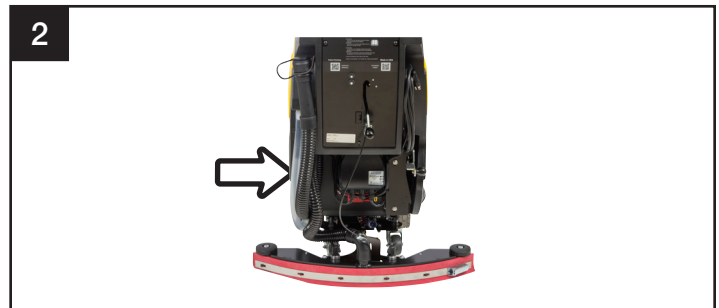


Align the squeegee assembly retention slots with the easy-grip knobs then tighten until secure.
 Attach the recovery hose to the squeegee assembly neck. Make sure to route the loop hose trap between the squeegee assembly neck and the left easy-grip knob.

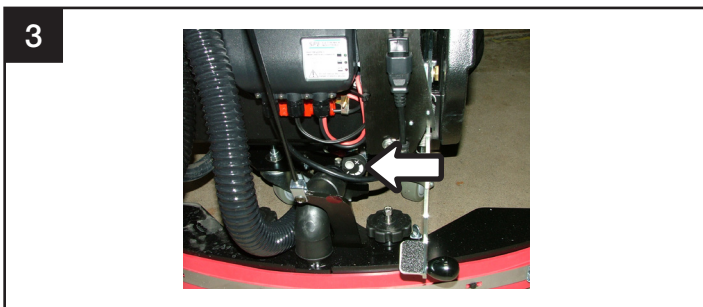
2. Operating Instructions



Water and cleaning detergent can be added to the unit's rear hose fill port, located to the left of the control panel. There is also a front fill port that is able to accept hose or bucket filling. Water temperature should not exceed 120°F (50°C).



The sight gage hose performs double-duty as the solution drain hose as well. You simply slide the hose off the press fitting and lower the hose to a drain or mop sink.



The solution flow rate is adjusted by a control located at the lower rear of the machine.



Turn the key to the ON position. You will see the battery meter on the left side of the upper control panel light up to show the battery charge level.

5



The scrub deck is lowered using the foot pedal at the rear of the unit. Place your foot on the pedal and depress the lever while shifting it to the right. Once clear of the lower notch, lifting your foot will lower the scrub deck into the operating position.

6



To lower the squeegee, lift the squeegee lever and shift it left to clear the notch. Once clear, lower the squeegee into the recovery position. In doing so, the unit's vacuum motor will activate.

7



To begin scrubbing, engage the handle trigger. The trigger activates solution flow, the brush motor and traction drive, if equipped. Speed control is easily thumb adjusted and the reverse can be depressed with your fingers on the back side of the control housing.

3. Additional Parts Required

There are no additional part required.