



TORNADO INDUSTRIES, LLC
3101 WICHITA COURT
FORT WORTH, TX 76140
PHONE: 800-VACUUMS
FAX: 817-551-0719
WWW.TORNADOVAC.COM

Operations Manual
For Commercial Use Only



**TASKFORCE EXTERNAL FILTER 2.25 H.P.
ELECTRIC VACUUM w/ACCESSORIES
MODEL NO: 98995**

NOTES

Within 30 days, to activate the warranty, go to;
<https://tornadovac.com/services/warranty-registration-form.aspx>
For warranty information go to www.tornadovac.com

General Specifications

The Taskforce External Filter Electric Vacuum is a heavy duty wet/dry industrial vacuum. It picks up wet and dry waste simultaneously without the need to change any filters. Heavier waste settles in the drum, while lighter particles are trapped in the external filters. The 2.25 h.p. vacuum motors create tremendous CFM for pick up power. This unit handles a wide variety of waste with ease, ranging from fine powders to heavy-grade viscosity products. The steel carrier protects the T-lite 16 gallon tank and has a basket for attachment storage. Large rear wheels and front 360 degree swivel caster wheels make operation and transportation easy. It accommodates 1.5" and 2" hoses and attachments. Options include a wide variety of 1.5" and 2' hoses and attachments.

Unit Specifications

THE 98995 ASSEMBLY INCLUDES:

- 98904 2.25 h.p. Blower Motor
- 98850 Tank Cover
- 90377 1268 sq. in. Poly Filter
- 98186 Tip and Pour Steel Carrier w/Basket
- 92654 16 Gallon T-Lite tank

ADDITIONAL ATTACHMENTS INCLUDE:

- 90573 Liquid Shut-Off Float w/Suds Pan
- 90684 1.5" x 15' Urethane Hose
- 90682 1.5 x 4' Aluminum Wand
- 90644 1.5" T-Lite Squeegee Tool
- 90642 14" T-Lite Fibre Shoe
- 90414 18" Round Nozzle

AMPS	15
RPM	15,750
HORSEPOWER	2.25
CFM	146 @ 2" hose, 184 @ 3" hose
STATIC WATER LIFT	51"
EXTERNAL FILTER AREA	1268 sq. in.
HORIZONTAL REACH	30 ft.
POWER CORD	50 ft. 14 Ga. 3 Wire
WEIGHT	65 lbs.
Tank Size	16 Gal. T-lite

Features

- Capable of simultaneous wet/dry pickup when using external filter.
- The unit is constructed for recovering water or other solutions without any adjustments. Liquid shutoffs are available.
- Ideal for materials from powder to oily metal chips, grindings, and shavings.
- Recovers fluids from water to medium weight oils.
- External filter collects lighter particles and resists clogging.
- Tank collects heavier waste (approximately 95% of all pickup); light particles collect in external filters.
- Known for high C.F.M. (cubic feet of air per minute) and moderate suction (static water lift).

IMPORTANT SAFETY INSTRUCTIONS

READ AND UNDERSTAND ALL INSTRUCTIONS BEFORE USING THIS UNIT

Read and understand this owner's manual and all labels on the unit before operating. Safety is a combination of common sense, staying alert and knowing how your unit works. Use this unit only as described in this manual. To reduce the risk of personal injury or damage to your unit use only the recommended accessories

For Commercial use,

SAVE THIS MANUAL FOR FUTURE REFERENCE

When using an electrical appliance, basic precautions should always be followed including the following:

WARNING: TO REDUCE THE RISK OF FIRE, ELECTRICAL SHOCK OR INJURY:

- Use only as described in this manual. Use only manufacture's recommended attachments.
- Do not use this unit near flammable liquids, gases, or explosive vapors like gasoline or other fuels, lighter fluids, cleaners, oil-based paints, natural gas, hydrogen, or explosive dusts like coal dust, magnesium dust, grain dust, or gun powder. Sparks inside the motor can ignite flammable vapors or dust.
- Keep the cord away from heated surfaces.
- Do not expose to rain. Store indoors.
- Do not unplug by pulling on cord. To unplug, grasp the plug
- Do not use with damaged cord, plug, or other parts.
- If the unit is not working as it should, has been dropped, damaged, left outdoors, or dropped into water, return it to a service center.
- Do not pull or carry by the cord, use the cord as a handle, close a door on a cord, or pull cord around sharp edges or corners.
- Do not run the unit over the cord.
- Do not handle the plug or the unit with wet hands.
- To reduce the risk of health hazards from vapors or dusts, do not vacuum toxic materials.
- Do not store near hazardous materials.
- Do not use the unit with a torn filter or without the filter installed except when vacuuming liquids as described in the operations section of this manual.
- Do not allow it be used as a toy. Close attention is necessary when used by or near children.
- To reduce the risk of injury from accidental starting, unplug power cord before changing or cleaning filter.
- Do not leave the unit unattended when plugged in. Unplug from wall outlet when not in use and before servicing.
- Turn off the unit before unplugging.
- Do not put any object into ventilation openings. Do not operate with any ventilation openings blocked; keep free of dust, lint, hair or anything that may reduce air flow.
- Keep hair, loose clothing, fingers and all parts of the body way from openings and moving parts.
- To reduce the risk of falls, use extra care when using the unit on stairs.
- Do not pick up hot ashes, coals, toxic, flammable or other hazardous materials.
- Connect to a properly grounded outlet only. See Grounding Instructions.
- Never operate with intake unguarded. Strong suction will pull fingers and/or clothing into blades and other moving parts.
- Always point exhaust port in a safe direction. Air exits at very high velocity.
- Always wear safety glasses when in the vicinity of this unit.
- If unit is hand held, hold firmly when starting. High torque when starting will cause unit to jerk and cause injury and/or damage.

Head Assembly Setup and Operation

ASSEMBLY OF HEAD UNIT AND DRUM

1. Remove all components from package. NOTE: The carrier, tank, and tank cover assembly all come pre-assembled to each other.
2. The blower motor comes already attached to the tank cover. Make sure exhaust nozzle is facing outward. To detach, turn the blower motor counter-clockwise and it will unlock from the tank cover.
3. Attach external filter by installing inlet collar onto exhaust nozzle. Turn collar clockwise to lock. Do not twist filter.
4. Connect the top of the filter to the handle of the carrier.

STARTING/STOPPING MACHINE

1. Plug blower motor power cord into 20 amp wall outlet.
2. Start by turning ON/OFF switch located on blower motor to ON position.
3. Stop by turning ON/OFF switch located on blower motor to OFF position.

OPERATING RULES

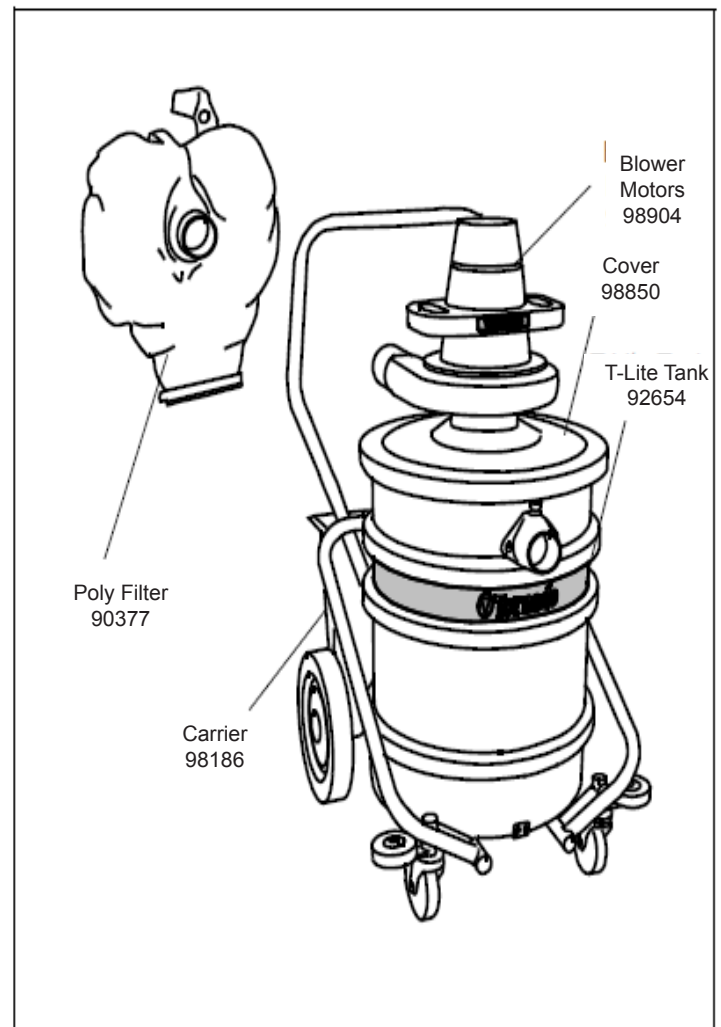
Use 1.5" to 2" I.D. hoses and attachments.

Use to recover water and light weight oils.

Use to recover powders, grindings, and metal shavings.

Use Tornado #94655 Add-A-Tank system when recovering fine dry powders. Grounding and static discharge are required when recovering powders. Use TORNADO brand static conductive hoses (urethane or neoprene), and ground vacuum head and tank assembly to an earth ground.

Extension cords must be heavier than the input cord, with a 50 foot maximum extension cord length.



Troubleshooting Guidelines

<u>Problem</u>	<u>Remedy</u>
1. Machine does not start	Make sure power cord is plugged into working receptacle. Inspect for defective power cord or plug.
2. Machine stops running	Make sure power cord is plugged into working receptacle. Check circuit breaker, inspect for armature brush wear or defective power cord or plug.
3. Machine has no suction	Inspect for clogged hose, clogged motor intake, collapsed hose, defective tank, material too heavy for unit.
4. Blower Motor overheats	Inspect armature brushes for satisfactory length (Refer to Maintenance section), proper motor ventilation, extension cord proper size (12-3 minimum).
5. Machine has poor recovery	<p>Inspect for correct size hose and attachments, poor sealing, defective tank, material too heavy for unit.</p> <p>Inspect external filter. Empty and clean if necessary.</p> <p>Inspect for proper tank cover seal (gasket).</p> <p>Inspect for damage and/or wear to hose and accessories.</p> <p>Inspect locked position of blower motor to tank cover.</p> <p>Inspect locked position of external filter to blower motor.</p> <p>Inspect all seals for wear and/or damage.</p>

Maintenance

MAINTENANCE OF MOTOR UNIT

Refer to Figure No. 2.

Damage to an armature invariably is caused by permitting carbon brushes to become worn to less than 1/4" in length. To prevent this from occurring, inspect brushes after the first 200 hours of operation and frequently thereafter, replacing when necessary. Failure to do so will nullify factory warranty.

HOW TO INSPECT BRUSHES

1. Unplug blower electrical cord from outlet.
2. Remove the two screws (39) located on the top cover (7).
3. Pull back U-clip (coil spring) (30) to release carbon brush (brush card assembly) (31).
4. Remove the two brushes (31) and inspect for length.
5. Replace if necessary.

NOTE: No other maintenance of motor should be attempted during the first year after purchase (refer to warranty). **Any other type of service should be performed by an authorized TORNADO service representative.**

MAINTENANCE OF EXTERNAL FILTER

For maximum operating efficiency and to insure longer wear, remove filter(s) and empty by detaching the bottom clamp after every use.

ALL OTHER MAINTENANCE

Use only three wire extension cords which have three-prong grounding type plug caps and three-pole receptacles that accept units plug. Extension cords must be the equivalent or heavier than the input cord. Replace any damaged cords.

Empty and clean vacuum, filter(s), and attachments after each days use for maximum performance.

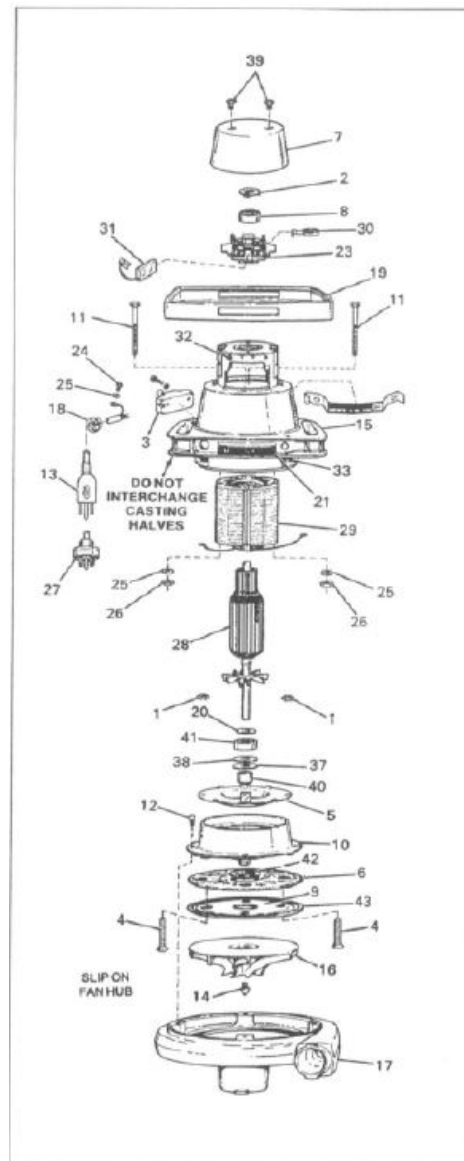


Figure No. 2