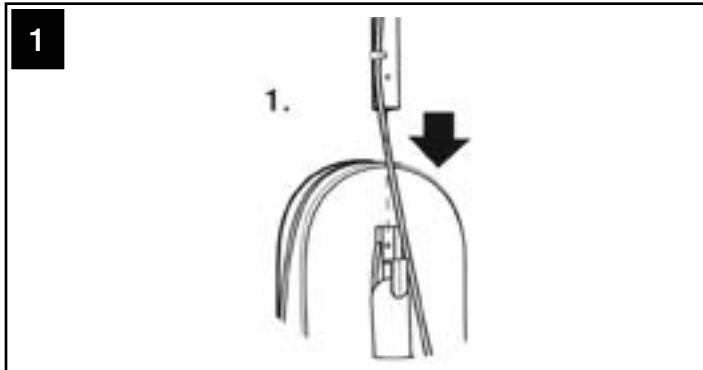


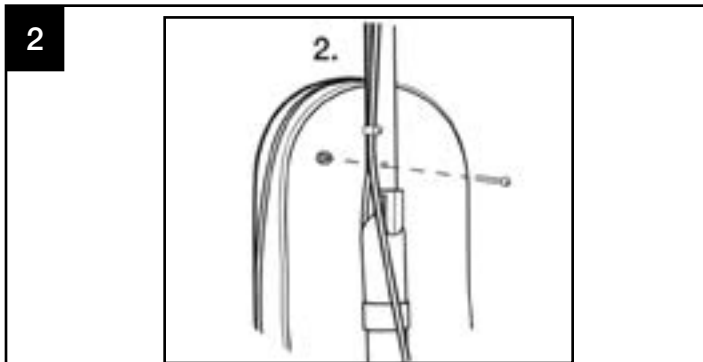
Quick Start Guide CK LW 13/1 97130

1. Assembly

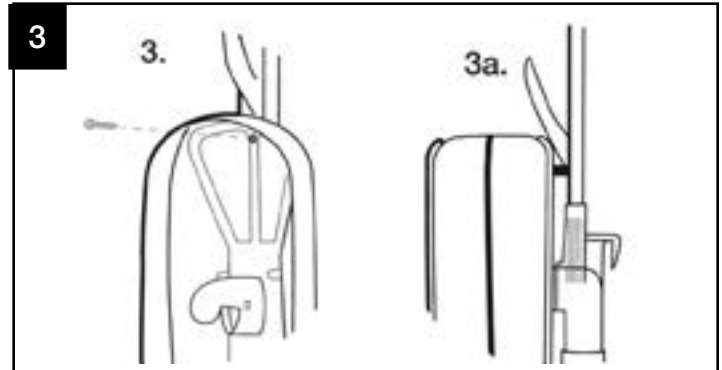
The only tool you will need is a Phillips head screwdriver.



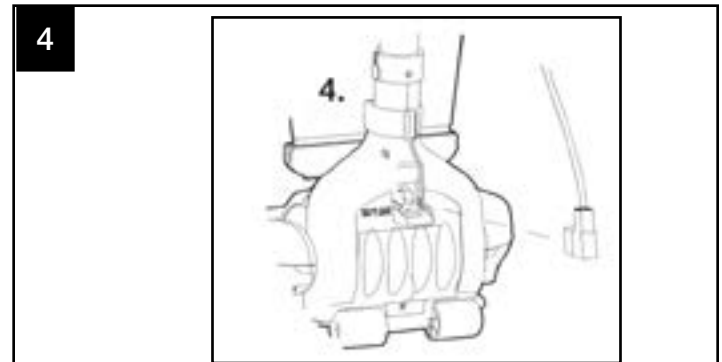
Slide the handle Tube into the Connector, aligning the hole in the Handle Tube with the molded hole at the top of the Connector.



Hold the hex nut in front of the Connector in the hex shaped cavity while inserting the screw with your finger from the back. Tighten the screw while placing your finger over the hex cavity to hold the hex nut in place. After a few turns, tighten further with a Phillips head screwdriver. Do not overtighten.



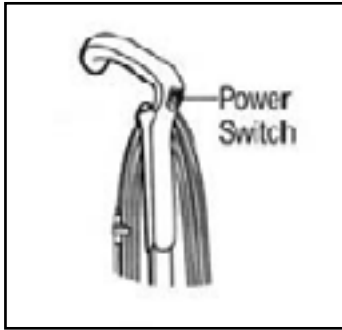
Slide screw through plastic Cord Hook from the inside of Cloth Bag. Align screw with hole in Handle Tube. Tighten screw.



Remove screw from Filter Cover. Remove Filter Cover. Insert the Connector Plug into the back of the unit at the rear of the Powerfoot. Make sure the Connector Plug is fully inserted. Replace Filter Cover. Replace Filter Cover.

2. Operating Instructions

1



The Power Switch is located in the Handle of the unit. Push down (I) to turn ON. Push up (O) to turn OFF.

2



To place the vacuum in position for use, lightly press your foot on the Powerfoot and tip the Handle backwards.

3. Additional Parts Required

There are no additional parts required.