



Crown-Tred™ Printed: Enhance the exterior appearance of your building with our mat that is resistant to inclement weather!

- Durable rubber cleats withstand demanding outdoor environments while preventing debris from traveling into the building
- As a logo mat, this product will reinforce your corporate position and inspire confidence
- Low profile facilitates the opening of doors

CROWN-TRED™ PRINTED APPLICATIONS

For exterior areas with light traffic of up to 125 persons per day. e.g.: Office building, Small retail store, Bank/Postal service, Church, Motel/Inn

FEATURES

- First line of defence: designed for outdoors (UV resistant) and between entrance doors applications
- Excellent color tones and shades with unparalleled detail and clarity
- Durable 1/4" nitrile rubber construction. Oil, grease and chemical resistant
- No minimum quantity, no set-up charge, PMS color match available (surcharge)

Compare Crown-Tred™ Printed to other Crown products:

SCRAPING ABILITY
5/10

WIPING ABILITY
0/10

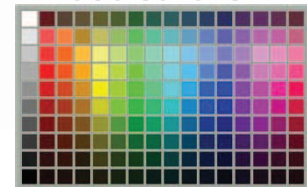
CRUSH RESISTANCE
10/10

BASE COLOR

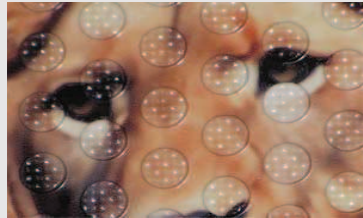




BLACK

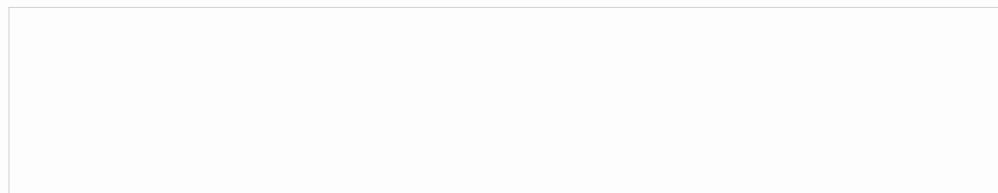
LOGO COLORS



UP TO 150 AVAILABLE COLORS

AVAILABILITY		TECHNICAL DATA	FINISH
STANDARD SIZES 29"x34" (apx. 2½'x3') 34"x54" (apx. 3'x5') 34"x111" (apx. 3'x10') 45"x67" (apx. 4'x6') 45"x95" (apx. 4'x8') 68"x68" (apx. 6'x6') 71"x96" (apx. 6'x8')	ROLLS Unavailable	Nub design: Round Durometer: 65 Type: Nitrile rubber blend Tensile strength: 1600 psi Mat thickness: 1/4" Total weight: 1.15 lbs per sq. ft.	 Molded thermo-plastic logo
CUSTOM SIZES Unavailable		WARRANTY  TOTAL CONFIDENCE WARRANTY	Click or scan code for short video 
USE AND CARE Vacuum and hot water extraction			

AUTHORIZED DISTRIBUTOR



T: 1 800 628 5463
 F: 800 544 2806
www.crown-mats.com

Products and their related details are subject to change. Please contact our Customer Service department to obtain current information.