



Controlmicro

UNLIMITED
VARIETY IN SMALL
DIMENSIONS



YOUVI Basic software package included



Open for all Windows- and web-based visualizations



Direct KNX connection



As client or stand-alone variant

Powerful equipment

The Controlmicro is ideally suited for room control due to its slim format. With its high-quality equipment the 8 inch touch panel opens up a variety of application options, depending on the software used.

Choose between different device variants. The noble aluminium frame is available in black or silver, so you can adapt it to your interior. The panel is additionally equipped with LED Ambient lighting on the frame, CO₂ sensor, proximity sensor and WiFi. You also have the option of operating the Controlmicro as a stand-alone room controller that does not depend on an external server or IP router. A KNX interface and the included YOUVI Basic software package make it possible. If you already have a control center or an external KNX server, you can connect the Controlmicro as a client variant. With Windows 10 IoT Enterprise LTSC, you have an ideal basis to run the visualization of your choice on the panel. You also benefit from features provided by Windows, e. g. night light or wipe gestures.

The entire control panel is manufactured with high-quality materials and contains the latest components, such as a 1200 x 1920 px display with ca-

pacitive touch screen, as well as loudspeaker and microphone. The panel is inherently powerful and easily integrates streams from your surveillance cameras or video door intercoms. Thanks to the fanless cooling system, it works in complete silence. Its glass front and the housing milled from aluminium make the touch panel look elegant and adapt timelessly to any living environment.

Clever Software

The hardware is rounded off with the specially adapted software YOUVI Basic. With this software you can control light, blinds, temperature or switches comfortably and centrally over the touch panel – simply via your customizable dashboard. Thanks to the intuitive interface, all functions are easily accessible and you hardly need to navigate at all.

YOUVI Basic can be extended with different modules and bridges according to your needs. With the logic module, many manual operations become obsolete. Store morning and evening routines and play them automatically. Or create message functions, presence simulations and individual scenes. You can also save electricity by regulating light, heat-

ing and other elements as required. Other Add-ons allow you to use additional functions – from video surveillance with IP camera to controlling your smart home by app or voice command. Furthermore, YOUVI allows you to access any website and integrate it into the user interface. There you can put together news or entertainment applications as you wish. The ability to connect Sonos Smart Speakers via the browser makes the Controlmicro a small multimedia device.

Open for further visualizations

In addition, it is also possible to use other visualizations that run on the Controlmicro as a web application or Windows client. There is a large selection here, such as Edomi or visualizations of the Gira HomeServer. In this way you can expand the functions of the panel according to your individual requirements.

Convenient installation

The Controlmicro can be easily mounted over a switch box with a standard screw spacing of 60 mm and a minimum depth of 35 mm, thus saving time-consuming chiseling and installation work.





YOUVI

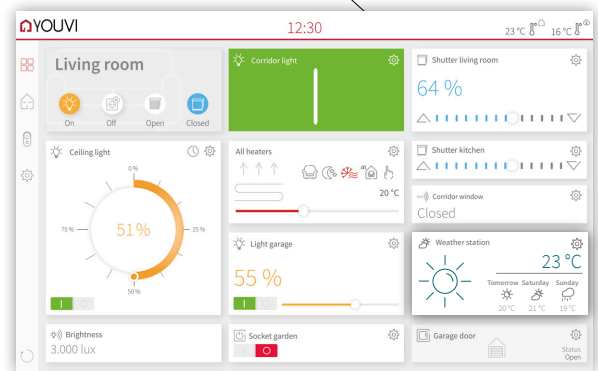
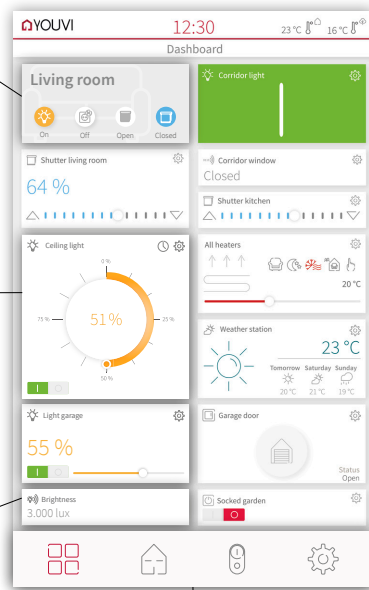
A visualization in which even new users find their way quickly and intuitively. The smart designed user interface shows you everything you need for uncomplicated building control.

Use the room buttons to go directly to the desired room and control lighting groups, shutters and more without having to navigate much.

You can use the Controlmicro and YOUVI in portrait or landscape format as you prefer.

Each tile can be displayed in two different sizes.

Various sensors for e.g. humidity, wind speed, brightness and binary sensors for window and door contacts are supported.



Use the clearly arranged navigation bar, divided into trades, floors and an individual dashboard.

In addition to controlling shutters, blinds, lights, (RGB-)dimmers, switches and heaters, the weather station can also be easily set up and integrated.



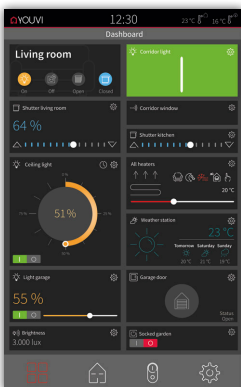
Automatic setup via ETS import function



Including iOS or Android app



Dashboard freely configurable via drag and drop






Dark Theme

You prefer darker designs? Then simply switch to Dark Mode. The dark theme not only looks elegant, it is also more gentle to your eyes in a dark environment.

AS MADE FOR YOU: THE YOUVI ADD-ON IDEA

YOUVI Basic covers the most common building control tasks. Beyond that our modular principle offers you exactly the functions you need. Just extend the functionality of your Controlmicro with additional modules and bridges according to your requirements. And best of all: You only pay for the features you really need.

	YOUVI Basic
Visualization <ul style="list-style-type: none"> ▪ Generate your visualization in just a few steps via ETS import. ▪ Look forward to simple and intuitive control, with a wide range of customization options. ▪ Already included in YOUVI Basic: Control of sockets, heating, dimmers, RGB lights and blinds. 	
Bus Monitor <ul style="list-style-type: none"> ▪ Speed up troubleshooting by using complex filters. ▪ Have the data traffic on the KNX bus logged. ▪ Import several KNX projects simultaneously. 	
IP Router <ul style="list-style-type: none"> ▪ Spare IP router hardware. ▪ Use up to 15 tunneling connections, multicast and extended frames. ▪ Benefit from KNX compatibility, e.g. for using ETS 5. 	
Connect <ul style="list-style-type: none"> ▪ Control your building by voice command with Alexa. ▪ Access the most important functions of your devices via your smartphone while on the move. 	optional
Camera <ul style="list-style-type: none"> ▪ Integrate your IP camera into the visualization. ▪ Define several streams simultaneously in one widget and use the full-screen display. 	optional
Logic <ul style="list-style-type: none"> ▪ Create individual logic: via time intervals, timers, device values or HTTP requests. ▪ Define labels for a better overview. 	optional
Intercom <ul style="list-style-type: none"> ▪ Receive visitors via your video door station. ▪ Choose your preferred SIP door intercom, for example from AGFEO, Mototix, Bird Home Automation or other manufacturers. 	coming 2021
Device Bridges <ul style="list-style-type: none"> ▪ Special functions from third-party suppliers can be integrated into YOUVI without additional hardware. ▪ For more information on device bridges, visit peaknx.com/youvi 	optional
YOUVI Basic is already included with PEAKnx hardware.	

AT A GLANCE

Technical data

Specification

- Intel Quad-Core processor
- eMMC memory with 64 GB
- 4GB main memory
- 8 inch TFT LED LCD panel
- Resolution: 1200 x 1920 pixels
- Multi-touch through PCAP touch technology
- Broadband stereo loudspeaker
- Optimized microphone
- WLAN: 2.4GHz and Bluetooth: 4.0
- Fanless cooling by convection
- Integrated CO₂ sensor
- Adaptive brightness
- Proximity sensor
- High-quality aluminium housing
- Anti-theft protection
- LED ambient lighting

Software

- Operating system: Windows 10 IoT Enterprise LTSC
- YOUVI Basic software package consisting of visualization, IP router and bus monitor (modules and bridges can be purchased separately)

Ports

- 100 Mbit Ethernet
- MicroSD card slot
- 1 x KNX

Dimensions

- Suitable switch box for mounting: Standard screw spacing: 60 mm, depth: min. 35 mm

Supply

- Supply voltage: 24 V DC 2.4 A

Compatibility

Visualizations

- Any Windows or web-based, e. g.:
- Gira: QuadClient
 - Edomi, openHAB and many more...

Cameras

IP streams in RTSP, JPG and MJPG format, e. g. from:

- Hikvision
- Axis
- Mobotix and many more...

Door communication

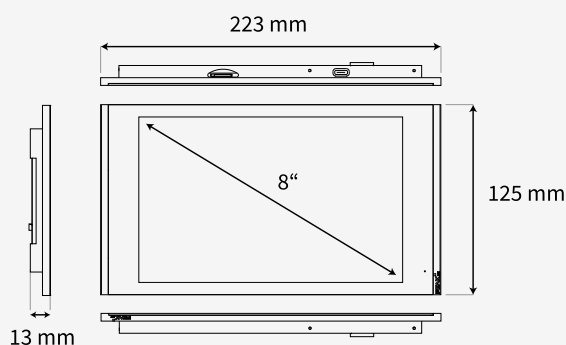
All SIP-enabled DCS, for example:

- Gira DCS incl. DCS-IP Gateway (in connection with Gira software)
- Doorbird IP Video Door station
- AGFEO IP-Video TFE
- Wantec Monolith C IP
- Mobotix T25 and many more...

Music software

Windows or web-based software:

- Apple iTunes, Spotify, Sonos and many more ...



- Reliable, noiseless operation
- Available in silver or black
- Easy surface mounting on switch box
- Can be mounted both horizontally and vertically
- Software package YOUVI Basic with visualization, IP router and bus monitor software included
- Due to KNX connection and YOUVI no additional server or IP router is required
- Compatible with many other visualizations and SIP door stations
- Easy display of surveillance cameras and other multimedia applications