



Certificate of Analysis

QA SAMPLE - INFORMATIONAL ONLY

1 of 3

ICAL ID: 20230913-024
 Sample: CA230913-012-024
 Jeeter THCA Joints: 090123BC // 090123CC // 090123DP // 090123MT // 090123WR // 090123AB
 Strain: Jeeter THCA Joints: 090123BC // 090123CC // 090123DP // 090123MT // 090123WR // 090123AB
 Category: Plant
 Type: Preroll

Urb
 Lic. #
 5511 95th Ave, Kenosha, WI, 53144
 Kenosha, WI 53144
 Lic. #

Batch#:
 Batch Size Collected:
 Total Batch Size:
 Collected: 09/15/2023; Received: 09/15/2023
 Completed: 09/15/2023

Moisture	Total THC	Total CBD	Total Cannabinoids	Total Terpenes
NT	NT	NT	NT	NT
Water Activity				
NT				

Summary	SOP Used	Date Tested	
Batch			Pass
Residual Solvents	RS-PREP-001	09/13/2023	Pass
Microbials	MICRO-PREP-001	09/15/2023	Pass
Mycotoxins	PESTMICO-LC-PREP-001	09/14/2023	Pass
Heavy Metals	HM-PREP-001	09/13/2023	Pass
Pesticides	PESTMICO-LC-PREP-001 / PEST-GC-PREP-001	09/14/2023	Pass



Scan to see results

Cannabinoid Profile

Analyte	LOQ (mg/g)	LOD (mg/g)	%	mg/g	Analyte	LOQ (mg/g)	LOD (mg/g)	%	mg/g
---------	------------	------------	---	------	---------	------------	------------	---	------

Total THC=THCa * 0.877 + d9-THC; Total CBD = CBDa * 0.877 + CBD. LOD= Limit of Detection, LOQ= Limit of Quantitation, ND= Not Detected, NR= Not Reported. Potency is reported on a dry weight basis. Instrumentation and analysis SOPs used: Cannabinoids:UHPLC-DAD(POT-INST-005),Moisture:Moisture Analyzer(MOISTURE-001),Water Activity:Water Activity Meter(WA-INST-002), Foreign Material:Microscope(FOREIGN-001). Density measured at 19-24 °C, Water Activity measured at 0-90% RH. All QA submitted by the client, All CA State Compliance sampled using SAMPL-SOP-001.

Terpene Profile

Analyte	LOQ (mg/g)	LOD (mg/g)	%	mg/g	Analyte	LOQ (mg/g)	LOD (mg/g)	%	mg/g
---------	------------	------------	---	------	---------	------------	------------	---	------

NR= Not Reported (no analysis was performed), ND= Not Detected (the concentration is less than the Limit of Detection (LOD)). Analytical instrumentation used: HS-GC-MS; samples analyzed according to SOP TERP-INST-003.



Infinite Chemical Analysis Labs
 8312 Miramar Mall
 San Diego, CA
 (858) 623-2740
 www.infiniteCAL.com
 Lic# C8-0000047-LIC

Josh M Swider
 Josh Swider
 Lab Director, Managing Partner
 09/15/2023

Confident Cannabis
 All Rights Reserved
 support@confidentcannabis.com
 (866) 506-5866
 www.confidentcannabis.com



This product has been tested by Infinite Chemical Analysis, LLC using valid testing methodologies and a quality system as required by state law. All LQC samples were performed and met the prescribed acceptance criteria in 16 CCR section 15730, pursuant to 16 CCR section 15726(e)(13). Values reported relate only to the product tested. Infinite Chemical Analysis, LLC makes no claims as to the efficacy, safety or other risks associated with any detected or non-detected levels of any compounds reported herein. This Certificate shall not be reproduced except in full, without the written approval of Infinite Chemical Analysis, LLC.



Certificate of Analysis

QA SAMPLE - INFORMATIONAL ONLY

2 of 3

ICAL ID: 20230913-024
 Sample: CA230913-012-024
 Jeeter THCA Joints: 090123BC // 090123CC // 090123DP // 090123MT // 090123WR // 090123AB
 Strain: Jeeter THCA Joints: 090123BC // 090123CC // 090123DP // 090123MT // 090123WR // 090123AB
 Category: Plant
 Type: Preroll

Urb
 Lic. #
 5511 95th Ave, Kenosha, WI, 53144
 Kenosha, WI 53144
 Lic. #

Batch#:
 Batch Size Collected:
 Total Batch Size:
 Collected: 09/15/2023; Received: 09/15/2023
 Completed: 09/15/2023

Residual Solvent Analysis

Category 1	LOQ	LOD	Limit	Status	Category 2	LOQ	LOD	Limit	Status	Category 2	LOQ	LOD	Limit	Status			
	µg/g	µg/g	µg/g	µg/g		µg/g	µg/g	µg/g	µg/g		µg/g	µg/g	µg/g	µg/g			
1,2-Dichloro-Ethane	ND	0.291	0.097	1	Pass	Acetone	ND	51.246	8.173	5000	Pass	n-Hexane	ND	0.281	0.058	290	Pass
Benzene	ND	0.048	0.015	1	Pass	Acetonitrile	ND	2.852	0.951	410	Pass	Isopropanol	ND	2.86	0.351	5000	Pass
Chloroform	ND	0.052	0.017	1	Pass	Butane	ND	4.849	0.79	5000	Pass	Methanol	ND	8.623	2.874	3000	Pass
Ethylene Oxide	ND	0.579	0.107	1	Pass	Ethanol	ND	5.729	0.703	5000	Pass	Pentane	ND	4.271	0.453	5000	Pass
Methylene-Chloride	ND	0.729	0.074	1	Pass	Ethyl-Acetate	ND	2.289	0.269	5000	Pass	Propane	ND	12.184	4.061	5000	Pass
Trichloroethene	ND	0.145	0.022	1	Pass	Ethyl-Ether	ND	2.869	0.951	5000	Pass	Toluene	ND	0.864	0.069	890	Pass
						Heptane	ND	2.859	0.264	5000	Pass	Xylenes	ND	2.572	0.303	2170	Pass

NR= Not Reported (no analysis was performed), ND= Not Detected (the concentration is less than the Limit of Detection (LOD)). Analytical instrumentation used: HS-GC-MS; samples analyzed according to SOP RS-INST-003.

Heavy Metal Screening

	LOQ	LOD	Limit	Status	
	µg/g	µg/g	µg/g	µg/g	
Arsenic	0.266	0.009	0.003	2	Pass
Cadmium	0.026	0.002	0.001	0.2	Pass
Lead	1.596	0.004	0.001	10	Pass
Mercury	ND	0.014	0.005	0.1	Pass

NR= Not Reported (no analysis was performed), ND= Not Detected (the concentration is less than the Limit of Detection (LOD)). Analytical instrumentation used: ICP-MS; samples analyzed according to SOP HM-INST-003.

Microbiological Screening

	Limit	Result	Status
	CFU/g	CFU/g	
Aspergillus flavus		Not Detected	Pass
Aspergillus fumigatus		Not Detected	Pass
Aspergillus niger		Not Detected	Pass
Aspergillus terreus		Not Detected	Pass
STEC		Not Detected	Pass
Salmonella SPP		Not Detected	Pass

ND=Not Detected. Analytical instrumentation used:qPCR; samples analyzed according to SOP MICRO-INST-001.



Infinite Chemical Analysis Labs
 8312 Miramar Mall
 San Diego, CA
 (858) 623-2740
 www.infiniteCAL.com
 Lic# C8-0000047-LIC

Josh M Swider

Josh Swider
 Lab Director, Managing Partner
 09/15/2023

Confident Cannabis
 All Rights Reserved
 support@confidentcannabis.com
 (866) 506-5866
 www.confidentcannabis.com



This product has been tested by Infinite Chemical Analysis, LLC using valid testing methodologies and a quality system as required by state law. All LQC samples were performed and met the prescribed acceptance criteria in 16 CCR section 15730, pursuant to 16 CCR section 15726(e)(13). Values reported relate only to the product tested. Infinite Chemical Analysis, LLC makes no claims as to the efficacy, safety or other risks associated with any detected or non-detected levels of any compounds reported herein. This Certificate shall not be reproduced except in full, without the written approval of Infinite Chemical Analysis, LLC.



Certificate of Analysis

QA SAMPLE - INFORMATIONAL ONLY

3 of 3

ICAL ID: 20230913-024
 Sample: CA230913-012-024
 Jeeter THCA Joints: 090123BC // 090123CC // 090123DP // 090123MT // 090123WR // 090123AB
 Strain: Jeeter THCA Joints: 090123BC // 090123CC // 090123DP // 090123MT // 090123WR // 090123AB
 Category: Plant
 Type: Pre-roll

Urb
 Lic.#
 5511 95th Ave, Kenosha, WI, 53144
 Kenosha, WI 53144
 Lic.#

Batch#:
 Batch Size Collected:
 Total Batch Size:
 Collected: 09/15/2023; Received: 09/15/2023
 Completed: 09/15/2023

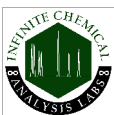
Chemical Residue Screening

Category 1	LOQ	LOD	Status	Mycotoxins	LOQ	LOD	Limit	Status		
	µg/g	µg/g	µg/g		µg/kg	µg/kg	µg/kg	µg/kg		
Aldicarb	ND	0.054	0.018	Pass	B1	ND	5	0.99	Tested	
Carbofuran	ND	0.030	0.007	Pass	B2	ND	6.05	2	Tested	
Chlordane	ND	0.075	0.025	Pass	G1	ND	10.23	3.38	Tested	
Chlorfenapyr	ND	0.075	0.025	Pass	G2	ND	5	0.78	Tested	
Chlorpyrifos	ND	0.048	0.016	Pass	Ochratoxin A	ND	19.48	6.43	20	Pass
Coumaphos	ND	0.031	0.010	Pass	Total Aflatoxins	ND		20	Pass	
Daminozide	ND	0.030	0.028	Pass						
Dichlorvos	ND	0.066	0.022	Pass						
Dimethoate	ND	0.030	0.010	Pass						
Ethoprophos	ND	0.035	0.012	Pass						
Etofenprox	ND	0.030	0.006	Pass						
Fenoxycarb	ND	0.033	0.011	Pass						
Fipronil	ND	0.051	0.017	Pass						
Imazalil	ND	0.041	0.014	Pass						
Methiocarb	ND	0.032	0.011	Pass						
Mevinphos	ND	0.039	0.013	Pass						
Paclbutrazol	ND	0.034	0.011	Pass						
Parathion Methyl	ND	0.024	0.008	Pass						
Propoxur	ND	0.035	0.012	Pass						
Spiroxamine	ND	0.030	0.008	Pass						
Thiacloprid	ND	0.033	0.011	Pass						

Category 2	LOQ	LOD	Limit	Status	Category 2	LOQ	LOD	Limit	Status		
	µg/g	µg/g	µg/g	µg/g		µg/g	µg/g	µg/g	µg/g		
Abamectin	ND	0.095	0.031	0.1	Pass	Kresoxim Methyl	ND	0.035	0.012	0.1	Pass
Acephate	ND	0.032	0.010	0.1	Pass	Malathion	ND	0.030	0.008	0.5	Pass
Acequinocyl	ND	0.072	0.024	0.1	Pass	Metalaxyl	ND	0.030	0.007	2	Pass
Acetamiprid	ND	0.030	0.009	0.1	Pass	Methomyl	ND	0.036	0.012	1	Pass
Azoxystrobin	ND	0.030	0.006	0.1	Pass	Myclobutanil	ND	0.045	0.015	0.1	Pass
Bifenazate	ND	0.030	0.010	0.1	Pass	Naled	ND	0.062	0.020	0.1	Pass
Bifenthrin	ND	0.030	0.006	3	Pass	Oxamyl	ND	0.036	0.012	0.5	Pass
Boscalid	ND	0.035	0.011	0.1	Pass	Pentachloronitrobenzene	ND	0.054	0.018	0.1	Pass
Captan	ND	0.358	0.120	0.7	Pass	Permethrin	ND	0.049	0.016	0.5	Pass
Carbaryl	ND	0.042	0.014	0.5	Pass	Phosmet	ND	0.031	0.010	0.1	Pass
Chlorantraniliprole	ND	0.037	0.012	10	Pass	Piperonyl Butoxide	ND	0.030	0.006	3	Pass
Clofentezine	ND	0.030	0.009	0.1	Pass	Prallethrin	ND	0.045	0.015	0.1	Pass
Cyfluthrin	ND	0.056	0.019	2	Pass	Propiconazole	ND	0.042	0.014	0.1	Pass
Cypermethrin	ND	0.077	0.026	1	Pass	Pyrethrins	ND	0.030	0.007	0.5	Pass
Diazinon	ND	0.030	0.003	0.1	Pass	Pyridaben	ND	0.030	0.008	0.1	Pass
Dimethomorph	ND	0.030	0.009	2	Pass	Spinetoram	ND	0.030	0.005	0.1	Pass
Etoxazole	ND	0.030	0.005	0.1	Pass	Spinosad	ND	0.030	0.003	0.1	Pass
Fenhexamid	ND	0.036	0.012	0.1	Pass	Spiromesifen	ND	0.030	0.008	0.1	Pass
Fenpyroximate	ND	0.030	0.006	0.1	Pass	Spirotetramat	ND	0.030	0.010	0.1	Pass
Flonicamid	ND	0.054	0.018	0.1	Pass	Tebuconazole	ND	0.031	0.010	0.1	Pass
Fludioxonil	ND	0.054	0.018	0.1	Pass	Thiamethoxam	ND	0.036	0.012	5	Pass
Hexythiazox	ND	0.032	0.011	0.1	Pass	Trifloxystrobin	ND	0.030	0.006	0.1	Pass
Imidacloprid	ND	0.055	0.018	5	Pass						

Other Analyte(s):

NR= Not Reported (no analysis was performed), ND= Not Detected (the concentration is less than the Limit of Detection (LOD)). Analytical instrumentation used: LC-MS-MS & GC-MS-MS; samples analyzed according to SOPs PESTMYCO-LC-INST-004 and PEST-GC-INST-003.



Infinite Chemical Analysis Labs
 8312 Miramar Mall
 San Diego, CA
 (858) 623-2740
 www.infiniteCAL.com
 Lic# C8-000047-LIC

Josh M Swider

Josh Swider
 Lab Director, Managing Partner
 09/15/2023

Confident Cannabis
 All Rights Reserved
 support@confidentcannabis.com
 (866) 506-5866
 www.confidentcannabis.com



This product has been tested by Infinite Chemical Analysis, LLC using valid testing methodologies and a quality system as required by state law. All LQC samples were performed and met the prescribed acceptance criteria in 16 CCR section 15730, pursuant to 16 CCR section 15726(e)(13). Values reported relate only to the product tested. Infinite Chemical Analysis, LLC makes no claims as to the efficacy, safety or other risks associated with any detected or non-detected levels of any compounds reported herein. This Certificate shall not be reproduced except in full, without the written approval of Infinite Chemical Analysis, LLC.