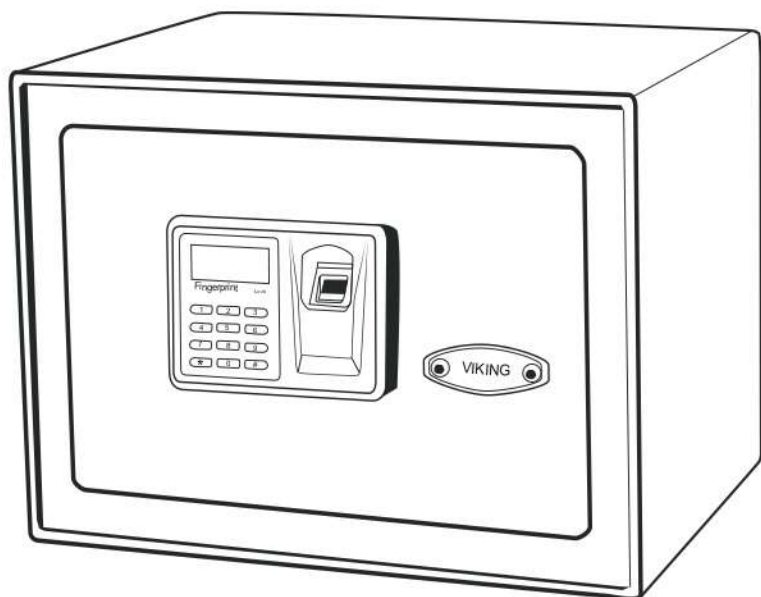




VIKING SECURITY SAFE

USER MANUAL © GREEN LIGHT VERSION **NEW**



MODELS:

- VS-12BL WALL SAFE
- VS-14BL TOP OPENING DRAWER SAFE
- VS-20BLX MINI
- VS-25BL
- VS-25DBLX (VS-25DBL*) SMALL DEPOSITORY SAFE
- VS-35BLX (VS-35BL*)
- VS-38BLX (VS-38BL*) EXTRA WIDE LAPTOP SAFE
- VS-50BLX (VS-50BL*) LARGE
- VS-52BLR (VS-52BL*) HIDDEN WALL SAFE
- VS-52BLX HIDDEN WALL SAFE LASER CUT

* Models may change name with improvements and modifications

Body Material	Steel
Can be opened by	Fingerprint / PIN code / Key
Optical Sensor	500 DPI, opens in fraction of a second
Fingerprint Entry	Stores up to 32 fingerprints,
Memory	Non-volatile memory - Registered PIN and Fingerprints are SAVED when batteries are removed.
Keypad Entry	Opens with 4-8 digits PIN code
Locking System	Motorized door, deadbolt lock
High Security Keys	4 prong cross keys. Two included.
LCD display	Battery Level indicator, OK and Error indicator, etc.
Sounds Mode	ON / OFF optional
Warning Beep	Safe beeps if door is left unlocked for more than 1 minute (*Warning Beep is disabled if the safe is unlocked with Key)
Time Out	Operation is put on HOLD for 2 minutes if multiple incorrect PIN or fingerprints are input
LED light	Build in LED light operates independently with 2 AA batteries
Warranty	One-Year Limited Warranty
Batteries	4 AA
Included Accessories	Mounting hardware and batteries
Fireproof	No
Door Thickness	5 mm
Body Thickness	2 mm

DISCLAIMER: Not recommend for age groups 55 and above. Due to thinning fingerprints ALL fingerprint readers will lose accuracy with increasing age.

VIKING SECURITY SAFE


USER'S MANUAL

IMPORTANT - READ FIRST



TEST ALL FUNCTIONS OF YOUR SAFE. THEN BOLT IT DOWN TO A PERMANENT LOCATION.

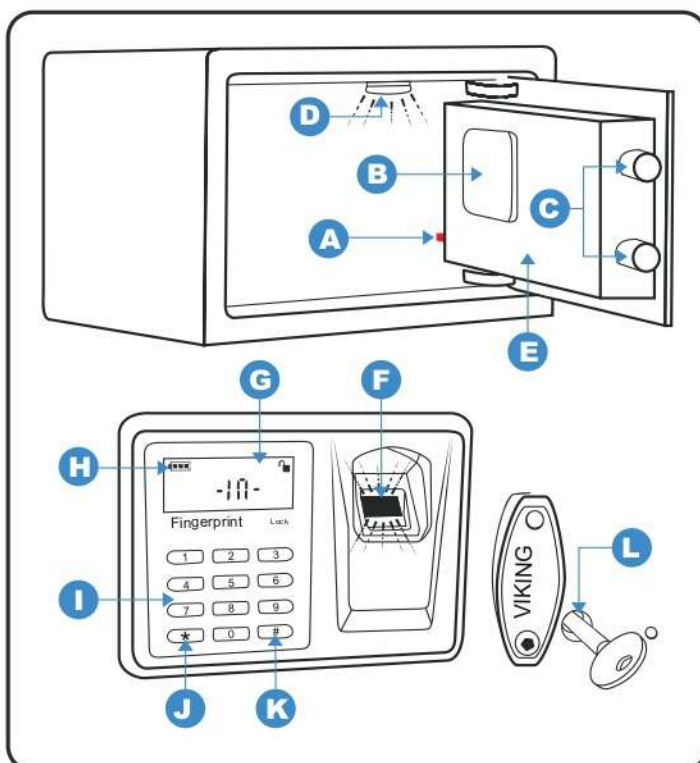
- If you used Key to UNLOCK your safe, use Key to Lock it. If you USED PIN or Fingerprint, LOCK it electronically with # button.
- When the Key is used to UNLOCK your safe ALL electronic functions are disabled, thus locking with # button will not work.
- If you used Key to UNLOCK your safe the Key cannot be removed in UNLOCKED position. Lock your safe with key and remove key. (For more information see **TIPS AND TROUBLESHOOTING**)

- When putting batteries in or replacing it MAKE SURE your safe is in LOCKED position.
- Remember to register NEW PIN, or else anyone can open your safe with Default PIN.
- In default mode fingerprint function is disabled. To activate it register at least one fingerprint.
- Remember to register the same fingerprint in multiple positions.
- You cannot remove only one set of fingerprints. You must Reset your safe and set it up again.
- When Reset to factory default mode, only Default PIN or Key can open the safe.
- When low battery is shown "  ", replace with new batteries. All registered fingerprints and PIN will be SAVED.
- Sounds can be turned ON/OFF, except Warning Beep. (*Warning Beep is disabled if the safe is unlock with Key).
- Multiple use of incorrect PIN or fingerprint will put your safe On HOLD for 2 minutes.
- When on HOLD only the Key can unlock your safe.
- Do NOT store the Keys to your safe inside the safe.

DISCLAIMER: Most all fingerprint biometric readers loose accuracy and become inconsistent due to worn out, damaged or thinning skin associated with aging.

DISCLAIMER: Functionality and Set Up of Viking safes may vary between batches. Check [Viking's website](#) for latest User's Manual and tips.

GENERAL DESCRIPTION

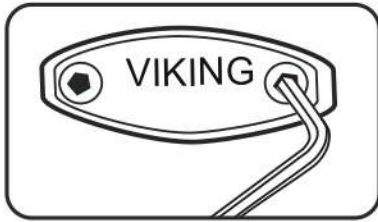


- A** Fingerprint Registration/Reset Button
- B** Battery Compartment
- C** Locking Bars
- D** LED light
- E** Motorized Door
- F** Fingerprint Reader
- G** LCD display
- H** Battery Indicator
- I** Keypad
- J** Fingerprint Activation Button *
- K** Confirm Button #
- L** Logo Plate and Key Access



NOTE

If you Unlock your safe with Key, use Key to Lock it.
If you Unlock it with PIN or Fingerprint, LOCK it electronically with #



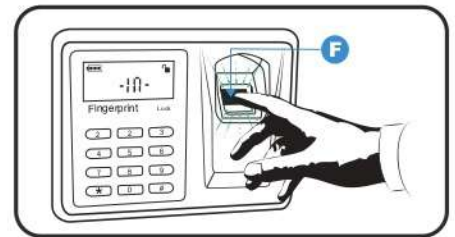
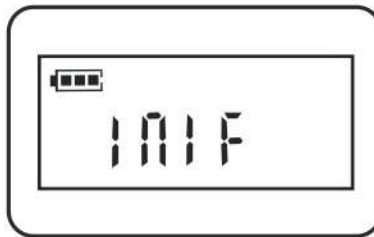
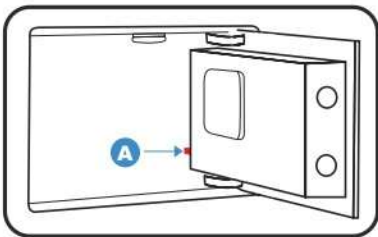
BEFORE FIRST USE

1. UNLOCK your safe with Key and open the door. (Remove Logo Plate, to access the keyhole)
2. With door open, LOCK the safe with Key and remove the Key.
3. Install batteries while the safe is in LOCKED position. Press any button on the keypad and look for the battery indicator icon on the LCD screen confirming your safe has power.

4. Then UNLOCK your safe electronically with PIN 1234 # and proceed with set up: change PIN and add fingerprints.
REMEMBER: All Electronic functions of your safe are disabled when your safe is in LOCKED position - Locking Bars Stick Out. Lock the safe with Key, Remove the Key and UNLOCK your safe electronically to proceed with Set up.
Unlock the safe electronically means using PIN or registered fingerprint. However, if the safe is new and/or in Default mode only factory default PIN 1234 # will unlock the safe. Fingerprints function is disabled in Factory Default Mode.

1. HOW TO RESET SAFE TO FACTORY DEFAULT SETTINGS

- 1.1. PRESS and HOLD down Reset Button **A** for 10 seconds or until you see "INIF" on the screen. Your safe is reset to Factory Default. All data is deleted, and you can begin with Set Up.



2. HOW TO CHANGE PIN CODE ON KEYPAD

Step 1: Enter the Default PIN 1234 and HOLD down # until (-----) shows up (1-2 seconds).

Step 2: Enter your New PIN Code and #. Wait for the Beep, and enter # AGAIN. (Do NOT hold down #). You will see OK on the screen confirming New PIN code is registered.

Note: You enter your New PIN only once, but you Enter # twice. Please, test to ensure only your New PIN will unlock the safe.

Step 3: Test. Enter the Old/Default PIN code 1234 # - it should give show ERR. Safe remains locked.

Enter your New PIN Code # - The safe should unlock.

Note: Should you need to change a Registered PIN follow the same steps using your Registered PIN instead of the Default PIN.

Note: When Reset to factory default mode, by holding down the Reset Button **A** for 10 seconds all data is erased. Only Default PIN or Key can open the safe. To change it to your New PIN Code again, follow the steps above.

3. HOW TO REGISTER FINGERPRINTS ON FINGERPRINT SCANNER

- 3.1. Unlock your safe using PIN (Do Not Use Key)

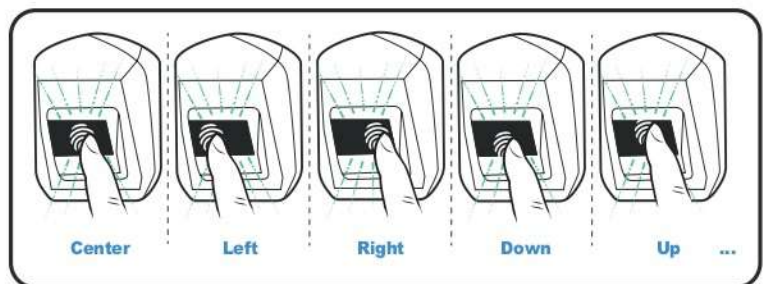
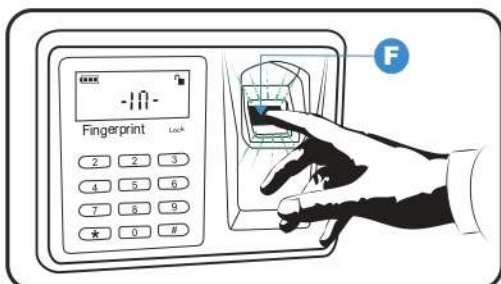
- 3.2. To register fingerprints, PRESS BRIEFLY Reset button **A**. As soon as Green Light comes on, place your fingerprint on the Glass Fingerprint Reader **F**. LCD screen will display "- IN -". **One fingerprint is registered. Repeat this step up to 32 to add more fingerprints.**

- 3.3. If the registration fails "Err" will be displayed on LCD screen. Register the same finger again by repeating Step 3.1.

- 3.4. Repeat Step 3.1 with the same fingerprint but change fingerprint position on the Glass Fingerprint Scanner - left, right, up, down, to the side.

Note: The more times and various positions you program one fingerprint the more likely it is to open in an emergency.

- 3.5. To register a completely different fingerprint, repeat 3.2.



**NOTE**

If you Unlock your safe with Key, use Key to Lock it.
 If you Unlock it with PIN or Fingerprint, LOCK it electronically with #

4. HOW TO UNLOCK AND LOCK THE SAFE WITH YOUR FINGERPRINT

4.1. **UNLOCK:** Press Fingerprint Activation Button * when Green light comes on, place registered fingerprint on the Glass Fingerprint Reader. "OPEN" will be displayed on LCD screen. Safe is Unlocked.

4.2. **LOCK:** Close the door and Press # button

Note: Do Not Use Key to lock the safe if you UNLOCKED it with fingerprint.

5. HOW TO UNLOCK AND LOCK THE SAFE WITH PIN CODE

5.1. **UNLOCK:** Enter a registered PIN and # (do not hold down #).

5.2. **LOCK:** Close the door and Press # button.

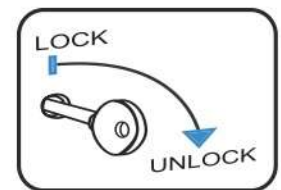
Note: Do Not Use Key to lock the safe if you UNLOCKED it with PIN.

6. HOW TO UNLOCK AND LOCK THE SAFE WITH A KEY

6.1. **UNLOCK:** Insert the key in the keyhole and rotate to the right/clockwise to unlock.

6.2. **LOCK:** Insert the key and Rotate left/anticlockwise.

Note: Do Not Use Key to lock the safe if you UNLOCKED it with PIN or Fingerprint

**7. HOW TO TURN SOUNDS ON/OFF**

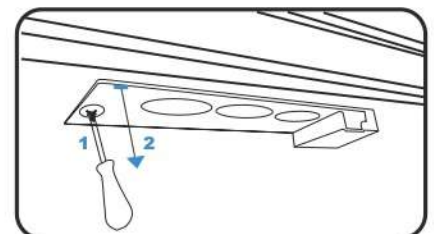
7.1. **SOUNDS ON:** Press 1 & * star button, you will hear a long beep, sound is on.

7.2. **SOUNDS OFF:** Press 0 & * star button, the sound is off.

8. HOW TO INSTALL/CHANGE BATTERIES ON LED LIGHT



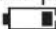
8.1. Unscrew the little screw. Carefully pull down the LED light on the screw side on the left. Put 2 fresh AA batteries on the back of the light. Put Back the LED light starting on the right side of the LED light first.

Note: 2 AA batteries are provided and have to be installed.

**9. TIPS AND TROUBLESHOOTING**

Note: If you Unlock your safe with Key, use Key to Lock it. If you Unlock it with PIN or Fingerprint, Lock it electronically with #

SCENARIOS	REASON AND SOLUTION
9.1. "I cannot remove the key from the keyhole."	If you used the Key to UNLOCK your safe the Key cannot be removed while the safe is in UNLOCKED position. Lock your safe with the key and remove the key.
9.2. Electronic functions do not work. "I cannot lock the safe with # button."	If you used Key to unlock your safe ALL Electronic functions are disabled, thus neither locking with # button, nor the Reset Button A will work. LCD screen will show "Err" when you try to LOCK with # button. Use the Key to LOCK your safe and remove the Key. UNLOCK your safe electronically (Using PIN or FINGERPRINT) and proceed using Keypad and Reset Button A.
9.3. "I just changed batteries and now the key does not rotate."	If you UNLOCKED your safe Electronically (Using PIN or FINGERPRINT) and replaced the batteries while the safe was in UNLOCKED position (with the Key in the keyhole), Key will not rotate. Lock your safe ELECTRONICALLY with # button. Then you can use the Key again.
9.4. Reset Button A does not function. "I press and hold the Reset Button A to reset my safe, but nothing appears on the LCD screen. Only battery icon." "I press briefly the Reset Button to register fingerprints, but the Fingerprint reader does not light up."	Provided your safe has power: <ul style="list-style-type: none"> If Your safe is in LOCKED position (Locking bars stick out), the Reset Button A will not function. Unlock your safe ELECTRONICALLY by using Registered Fingerprint or PIN. Reset Button A will function ONLY if the safe is in UNLOCKED position (Locking bars DO NOT stick out). If your safe is UNLOCKED with Key, Reset Button A will not function even if the safe is in UNLOCKED position. Lock the safe with the Key and UNLOCK it Electronically (Using PIN or FINGERPRINT). Proceed with using the Reset Button A.

SCENARIOS	REASON AND SOLUTION
9.5. "I only have a Key to access my safe. I do not have PIN, nor registered fingerprints. How do I reset the safe?"	<p>Unlock your safe with the Key. While your safe is in UNLOCKED position, remove 1 battery and Press any button on the keypad. Put back the battery. As soon as you put the battery back you will see the Battery Indicator Icon  on the screen. Press and Hold down the Reset Button  till you see -INIF—on the LCD screen. Your safe is reset to Default, all data is erased, and you can set it up with NEW PIN and register fingerprints.</p> <p>If the safe starts beeping while you follow steps above, UNLOCK your safe ELECTRONICALLY by using Registered Fingerprint or PIN and LOCK with #.</p>
9.6. "My safe is in UNLOCKED position, but Key cannot be removed, key does not rotate." "I unlocked my safe with Fingerprint and try to lock it with Key, but the key does not rotate."	<p>If you unlocked your safe Electronically (using Fingerprint or PIN) with the key in the keyhole, the Key will not rotate. However, all electronic functions are still available. LOCK your safe with # button and the key will start working.</p> <p>Remember: Use the Key OR ALTERNATIVELY use Keypad/Fingerprint access, but do not COMBINE the two access options.</p>
9.7. "I unlocked the safe with the Key and then pressed # button to lock it, but the safe does not lock. LCD screen shows Err. The key is still in the keyhole."	<p>If you Unlocked your safe with the Key, you must use the Key to lock it, because electronic functions will be disabled when Key is used. Lock the safe with key, then proceed with UNLOCKING with Fingerprint or PIN and LOCKING with #.</p>
9.9. "How do I check if my safe has power and what is the battery level?"	<p>To check if your safe has power, press any button and you will see battery indicator icon  on the LCD screen. If the LCD screen is blank and no battery indicator is showing, your safe does not have power. Check if the batteries are installed correctly and/or Change batteries. The Battery indicator will also show the battery charge level.</p>

MOUNTING INSTRUCTIONS

TEST ALL FUNCTIONS OF YOUR SAFE. THEN BOLT IT DOWN TO A PERMANENT LOCATION.

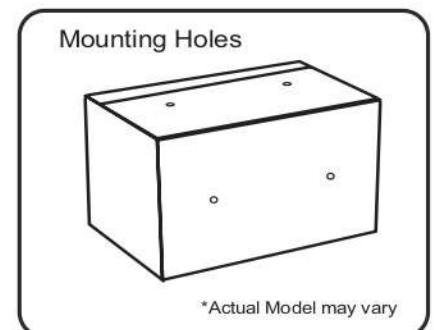
Note: The safe may be mounted to a wall or floor. Be aware of the load bearing. Failure to do so can result in personal injury and/or damage to property. Use appropriate tools when performing work and always use eye protection

• Wall Mounting

- Do not mount the safe without anchoring to the wall
- Find the studs in the wall, at your desired location. Most studs are 16 inches or 24 inches apart
- Check the wall for concealed wires or pipes
- Measure the location of the pre-set drill holes; mark their exact position onto the wall ensuring that the studs or anything else behind will not interfere
- Drill the appropriate size holes for the anchors you are using
- Carefully press the anchor into the holes at this time
- Mount the safe by running screws from inside of the safe and securing to anchors; ensure the safe is mounted securely.

• Floor Mounting

- Use proper drill tools depending on the type of floor you are mounting the safe (wood, tile, or concrete)
- Measure the location of the pre-set drill holes; mark their exact position onto the floor
- Drill the appropriate size holes for the anchors you are using
- Carefully press the anchor into the holes at this time
- Mount the safe by running screws from inside of the safe and securing to anchors; ensure the safe is mounted securely.



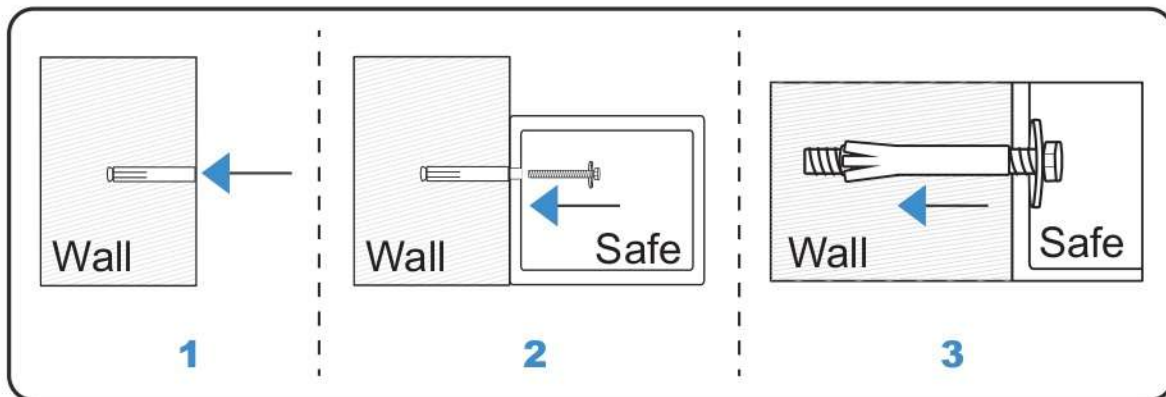
WARNING

Never store firearms and ammunition together. The safest protection against accidents involving children is to store your firearm unloaded in an approved Firearm Safety Lock Box, with ammunition stored separately.

MOUNTING METHOD

Fix the safe in the place which is not easy to move.

- Drill holes for expansion bolts (or clamping screws) in the right place.
- Turn the expansion bolts counterclockwise to separate.
- Use the expansion bolts (or clamping screws) to secure the safe to the wall.
- Make sure the safe is mounted in place as required and then tighten all screws.



CAUTION

Use the expansion bolt when there is a concrete wall surface. Use the clamping screw when there is a wooden wall surface.

CARE AND MAINTENANCE

To maximize the security and performance of the safe, keep Glass Fingerprint Scanner **F** clean

- Use a dry cloth to remove any smudges or prints off the Fingerprint Scanner after use
- Use gentle cleaning agents to clean the safe and Glass Fingerprint Scanner
- Test registered fingerprints and PIN code every 6 months
- Keep liquids away from the control panel. Spills on the control panel will cause damage and possibly electric shock
- Secure safe in a proper area to prevent from falling and causing damage or injury
- DO NOT disassemble the product. For all repairs, contact Viking Security Safe Customer Service