

TRUCKVAULT®





ONTO THE NEXT ADVENTURE

PARTING WORDS FROM OUR FOUNDER AND LEADER

Farewell, TruckVault.

My good friend, Captain Sy Iffert (1920 -2020), once told me the reason we got along so well was that we always talked about things we were going to do rather than things we had done. To the end, Sy never stopped looking forward. Like him, my focus is on things I'm going to do rather than the things I have done.

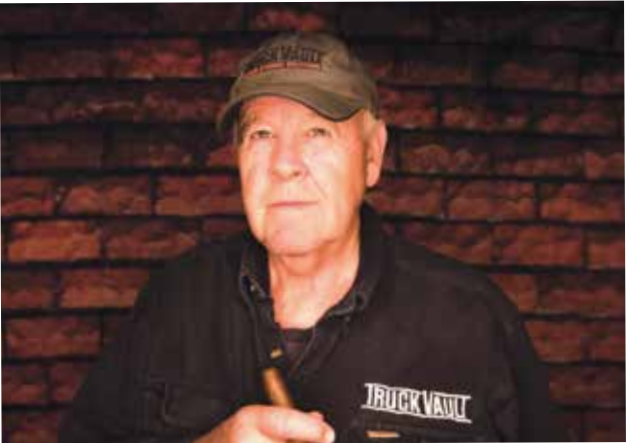
TruckVault has been a great trip, but it is time for the younger, more energetic, and most certainly smarter to take over. Fortunately, TruckVault has no shortage of incredible people with great talent and ideas. With that in mind, a new CEO

will be chosen to take the helm at TruckVault at the end of March 2022. I will be around to answer questions should I be asked.

My rocking chair will continue to collect cobwebs as there is much to do. In June my wife and I will travel to Scotland, England, France, Spain, and Portugal and will return to our duties at our farm at summer's end. Beyond that, who knows what projects come next?

My years at TruckVault have seen customers, colleagues, and vendors become life-long friends, and I thank all of you for sharing this part of my journey. Life is just one adventure after another and I am anxious to move forward to whatever new adventures await.

With gratitude,



Alan Chandler
CEO - AL CHANDLER

“LIFE IS JUST ONE ADVENTURE AFTER ANOTHER AND I AM ANXIOUS TO MOVE FORWARD TO WHATEVER NEW ADVENTURES AWAIT.”



SECURITY : IT'S OUR #1 PRIORITY

At TruckVault, we take pride in providing our customers with the peace of mind that comes from knowing their valuable gear is secure, no matter where they may leave their vehicle.



PUSH-BUTTON WITH KEY OVERRIDE LOCK

The most secure and trusted lock among law enforcement agencies.



ALL-WEATHER COMPRESSION LOCK

Heavy-duty key lock used in conjunction with All-Weather Series TruckVault Secure Storage Systems.

CUSTOM... IT'S WHAT WE DO

CUSTOM DRAWER SIZING

TruckVault can customize the size, number, and orientation of the drawers of your TruckVault Secure Storage System to create virtually any configuration.

CUSTOM BED CONFIGURATIONS

If you have tanks, tool boxes, gooseneck hitches or any other equipment in the truck bed, just provide us with the detailed measurements, and we can customize an item to fit.

MULTI-STACKED DRAWERS

Sometimes the best direction to go is up. When space is limited, or equipment is at a maximum, we can stack drawers to maximize secure storage.

DRAWER FACE FINISHES

You can even customize the look and feel of your TruckVault Secure Storage System with optional accessory drawer faces in a wide range of high-end wood grain finishes.



OFFERING ONE MORE LINE OF DEFENSE

In today's firearm sensitive culture, it is paramount that weaponry and other valuables be secured responsibly. Strike Guard Technology™ has been added to reinforce the Push Button Key Override Kaba Lock with a flanged lip, consisting of a Strike Plate and Backer Plate constructed of AISI 1020 Galvanized Steel. The Strike Plate works in unison with the Backer Plate and the primary structure of the unit to firmly lock the bolt and help prevent bolt tampering and movement.



STRIKE PLATE

Works in unison with the Backer Plate to help prevent bolt tampering and movement

BACKER PLATE

Works in unison with the Strike Plate to help prevent bolt tampering and movement

// CHEVY TAHOE



// FORD EXPLORER



BUILT FOR YOUR PURPOSE

TruckVault Secure Storage Systems are an ideal match for the Chevy Tahoe. Our specific designs maximize storage space and utilize factory lock downs for easy and secure installation. TruckVault has a wide range of designs for all generations, allowing for many aftermarket accessories, including prisoner containment and K9 units.



CHIEF
SUV - Commander Line



CUSTOM INVESTIGATOR
SUV - Commander Line



FIELD RANGER
SUV - Commander Line

EXPLORE YOUR OPTIONS

The new Ford Explorer is one of the most popular SUVs on the road today, and TruckVault has a full suite of models designed specifically for it. Utilizing an innovative bracket installation system for the ultimate in security, a TruckVault Secure Storage System is the perfect accessory to get the most out of your Explorer.



1 DRAWER MAGNUM ON LIFT SYSTEM*
SUV - Elevated Line

*See page 30 for more product details.



INVESTIGATOR
SUV - Base Line



2 DRAWER STANDARD
SUV - Base Line



ELEVATE YOUR SECURITY

Our Elevated models mount one of our industry-leading TruckVault Secure Storage Systems atop rugged, powder-coated, steel brackets to allow easy access to the spare tire in certain models of SUVs. The brackets are affixed directly to factory locations on the vehicle for a secure and sturdy install. The new elevated design also allows for storage of items that do not need to be secured under the drawer system.

PRODUCT HIGHLIGHTS

- Open space for unsecured items.
- Easy spare tire access.
- Available with a variety of drawer heights and lock options.
- Rugged, powder coated steel bracketry.
- Elevated, yet still maintains rear window line of sight.



PULL OUT RADIO TRAY FOR ELEVATED DESIGNS

Positioned directly below your secure gear storage drawer, the Radio Tray add on integrates perfectly with all Elevated Designs, providing quick and easy access to your radio and electronic gear.



QUICK ACCESS TO YOUR SPARE

Flip up the factory floor panel, or the included replacement panel on some models, to gain direct access to the spare.



RUGGED BRACKETS

Steel brackets secure directly to factory locations for a secure and tough install.



MAXIMIZE STORAGE

Preserves space underneath to store items that do not need to be secured.



SPARE TIRE ACCESS

Maintaining access to your spare tire is an important factor in finding secure storage that works for you. To achieve this, we've designed a method for maintaining access in your pursuit SUV. The Lift System allows for a full-size TruckVault Secure Storage System to be raised on a reinforced hydraulic lift to gain entry to your spare tire.



RADIO TRAY + LIFT SYSTEM
Maintain easy and quick access to your radio and electronic gear with a bottom mounted Radio Tray Lift System.
(5 7/8" of clearance for electronic equipment)



STEP ONE
Hand-loosen the two star knobs located on both sides of the TruckVault Secure Storage System.



STEP TWO
Firmly grasp the handles on the drawer face and slide the unit out to its fully extended position. Hand-tighten the outside safety locks from step one.



STEP THREE
Using the handles, lift the unit upward. The built-in air assist cylinders will help offset the weight.



***1 DRAWER MAGNUM ON LIFT SYSTEM SUV - Elevated Line**

*Only the 2011+ Ford Explorer can accept the Lift System.



SECURE YOUR GEAR



Sedan Series products have emerged from the core ideals of TruckVault's focus on security and protection. Generally constructed as single drawer units, these workhorses of the law enforcement community are geared to serve all your weapon or valuable secure storage needs while maximizing space that normally would go unused in your trunk. Custom units can be designed as well, including models with room for radio equipment and other sensitive electronics.



PRODUCT DETAILS

	WIDTH	DRAWERS	LENGTH	DEPTH
1 DRAWER //	-	-	-	-
RADIO PATROLMAN //	33" to 43"	1	16" to 30"	4.875" to 8.875"
				Top: 3.75" to 6.25" Bottom: 2.75" to 3"



RADIO PATROLMAN
Sedan - Elevated Line



STANDARD 1 DRAWER
Sedan - Elevated Line



STANDARD 1 DRAWER
Sedan - Base Line

WHY BUY TRUCKVAULT?

- 01

HEAVY-DUTY PUSH BUTTON LOCKS.

Five-button combination locks with key override for easy access provide premium protection and security.
- 02

PREVENTS HARMFUL MOISTURE

Drawers stop potentially damaging condensation brought on by the earth's elements.
- 03

PROTECTS FROM DUST AND DIRT

TruckVault Secure Storage Systems protect from dust, dirt and grit with tightly sealed drawers.
- 04

STRONGER AND LIGHTER

Constructed with extremely tough MDO, TruckVault Secure Storage Systems are stronger than metal or plastic and travel silently.
- 05

PROVEN FIRE RESISTANCE

TruckVault Secure Storage Systems insulate stowed equipment from heat and fire damage.
- 06

PROTECTION FROM THEFT & BREAK-INS

Each drawer system is engineered to resist break-ins, and low-profile models resemble the floor of your vehicle.
- 07

A FIT FOR VIRTUALLY ANY VEHICLE

TruckVault Secure Storage Systems are built to fit the vehicle they are ordered for, ensuring a perfect fit and finish every time.
- 08

SIMPLE INSTALLATION

Nearly every model of TruckVault Secure Storage System can be installed in under an hour and usually includes all hardware you'll need for the job.
- 09

CUSTOM CAPABILITIES

TruckVault's team frequently engineers custom solutions to meet individual customer needs.
- 10

LIFETIME CUSTOMER WARRANTY

Trouble-free operation guaranteed as long as you own your vehicle. Warranty may be transferred (original purchaser only) to new vehicle. Locks have a one-year limited warranty from the lock manufacturer.

MEDIUM DENSITY OVERLAY (MDO)

FEATURES

MDO is a wood substrate formed from weather-resistant resin overlays bonded to multiple layers of wood by heat and pressure. This process creates an extremely strong and durable material that is up to 40% stronger than other plywood products. Trusted in numerous industries, including home construction and concrete formwork, MDO is the perfect material to create a strong, secure, and customizable product.

BENEFITS

As one of the strongest wood materials on the market, MDO is highly dependable for security products. You'll feel the strength the moment you open the drawer. MDO also provides heat, moisture and humidity protection superior to metal enclosures. When you combine these benefits with the ability to completely customize products to a wide range of designs, you have the very best secure storage solution for vehicles on the market.



QUALITY PRODUCTS ARE MADE WITH THE BEST MATERIALS AND CRAFTSMANSHIP. TRUCKVAULT HAS FOUND THE PERFECT ONE-TWO PUNCH.

BLACK COMPOSITE



The default drawer front on every drawer system is Black Composite. This material provides a dense and consistent surface with extremely tight tolerances around the drawer face to ensure maximum security. High-grade wood grain drawer fronts are also available for those seeking a classic look.

CARPET



TruckVault Secure Storage Systems most commonly come completely carpeted inside and out with automotive-grade carpet. Color-matched to industry standards, the carpet blends the drawer system seamlessly with your vehicle's factory interior.

ALL-WEATHER COATING



Weatherproof Armour Coating comes standard with each Pickup Series All-Weather Line TruckVault Secure Storage System. The coating is sprayed on after the drawer system build is completed, ensuring supreme protection from harmful heat, fire, grit and moisture.

CARGOGLIDE

With a CargoGlide, you can access the very deepest portion of your pickup bed without having to crawl on your hands and knees every time you need your unsecured gear. Stop scuffing your knees and straining your back. Install a CargoGlide today!

- Aluminum frames with standard TuffDeck™ surface
- 100% extension, optional 70% extension
- 4.5" side rails with tie-down access
- Stock and custom sizes
- 600-pound to 2,500-pound capacity
- All units tested to 50% overstated capacity for user safety
- Sixteen liner bearings per CargoGlide
- Designed, engineered, and built in USA



CARGOGLIDE
Call For Pricing

HEAVY-DUTY PULL OUT TABLE

An additional work surface you can depend on! Perfect for the operator who needs to work right in the field. Locking heavy-duty slides can support up to 200 pounds, and the standard laminated surface will stand up to the rigors of field work. Available in both bottom table and top tray open tray versions, and carpeted or magnetic dry-erase surfaces.

- Bottom table and open top tray versions
- 200-pound capacity
- Locking heavy-duty slides
- Offered in standard laminated surface with available options of carpeted or magnetic dry erase working surface



HEAVY-DUTY PULL OUT TABLE
Call For Pricing

IN-DRAWER LIGHTING

New and improved in-drawer LED lighting provides 16–20 hours (battery dependent) of white or red light to help illuminate the interior of your drawers. Mount to the interior carpet of your drawer unit using the provided 3M Velcro strips or use the mounting bracket and corresponding screws for a more permanent fixture. Available for \$35 retail by calling today.



IN-DRAWER LIGHTS
MSRP \$35 USD

MAGNETIC MAP BOARDS

A great solution for team planning in the field. Custom and free floating on ledgers, you can either stand them up, use them as a flat writing surface, or take them with you. Installed towards the top of the drawers to preserve storage underneath. Available with or without a pencil cubby.



MAGNETIC MAP BOARDS
Call for Pricing

TRUCKVAULT DAYBOX

Due to increased customer demand, TruckVault is now manufacturing its high-quality line of Class III Dayboxes in two sizes: Standard Height and Magnum Height, both of which will fit securely into our TruckVault Secure Storage Systems. TruckVault Dayboxes meet or exceed all ATF standards for temporary supervised storage of explosives and detonators. Custom sizing is also available.

MAGNUM DAYBOX
MSRP \$445 USD
Inside Dimensions:
12.5" x 6.5" x 3.5"

STANDARD DAYBOX
MSRP \$395 USD
Inside Dimensions:
12.5" x 6.5" x 3.5"



BRACKET SYSTEM
\$110 USD

TECHNOLOGY PLATFORM

The TruckVault Technology Platform (TTP) is designed to provide power and lighting where you need it, when you need it, for as long as you need it.

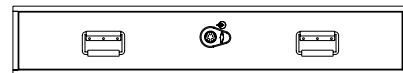
- TTP 12-volt power for charging and operating mobile devices (5v USB adapters available)
- TTP provides 120-volt power inside drawers (inverter required)
- Cubbies and table extensions for laptops and other portable gear
- Heavy-duty wiring and state-of-the-art cable handling ensure years of dependable service.
- Top, side or inside the drawer power mounting is available.



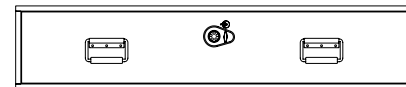
TECHNOLOGY PLATFORM
Call for Pricing

PRODUCT OPTIONS AND UPGRADES

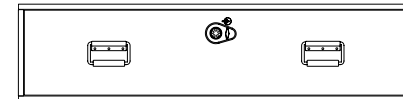
DRAWER HEIGHT



STANDARD HEIGHT : 6 1/8"
Enough vertical room for various low-profile equipment and gear.

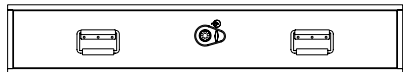


UTILITY HEIGHT : 8 1/8"
Providing additional head space for mid-size equipment and gear.

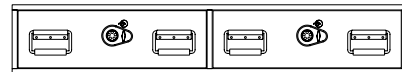


MAGNUM HEIGHT : 10 1/8"
Ample drawer depth for larger equipment and gear.

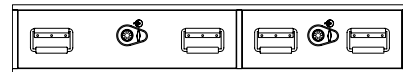
DRAWER COUNT



ONE DRAWER
Open storage space with abundant organizational options, allowing space for larger items.

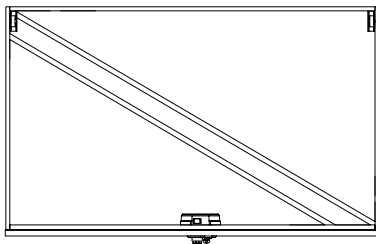


TWO DRAWERS
Splitting up your available storage space can help keep sensitive gear separated.

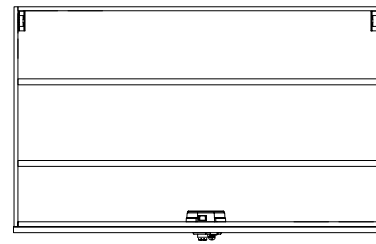


OFFSET DRAWERS
Allowing for larger sized gear to be stored separately from smaller items when needed.

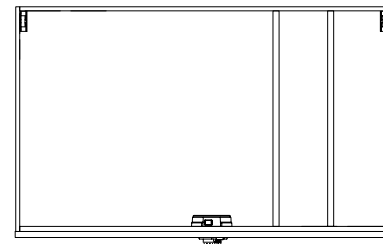
DIVIDER PACKAGES



DIAGONAL
Run from corner to corner, good for long and narrow pieces of equipment.



LONG
Run the length of your longest drawer side and can be positioned in any desired form.



SHORT
Section off the interior drawer into a number of compartments.

DRAWER LOCKS



KABA SIMPLEX COMBO LOCK



SILVER T-LOCK



SLAM LATCH



BLACK T-HANDLE

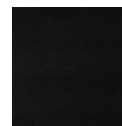


KEYLESS ENTRY FOB



FOLDING T-HANDLE (ALL-WEATHER)

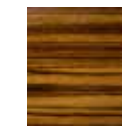
DRAWER FACES



BLACK



MAHOGANY



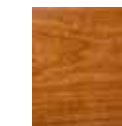
ZEBRAWOOD



WALNUT



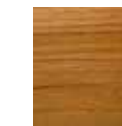
ORVIS TEAK



CHERRY

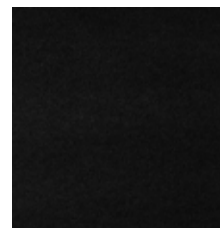


WHITE MAPLE

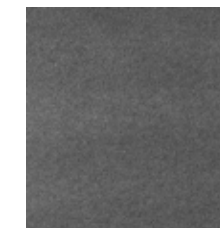


OAK

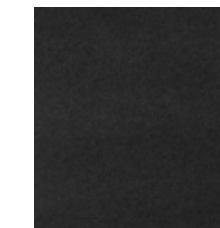
CARPET COLORS



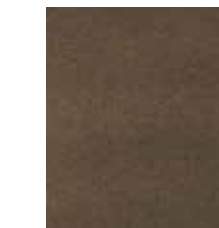
BLACK



GRAY



CINDER

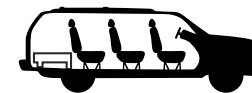


BEIGE

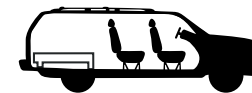


BEDRUG GRAY

VEHICLE LENGTH



SHORT : Fits snug against the 3rd row seat.

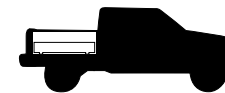


MEDIUM : For vehicles with no 3rd row seats.

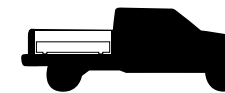


FULL : Extends all the way to the back of the 2nd row seat.

SHORT BED : Spans 5'6" of bed length.



MEDIUM BED : Spans 6'6" of bed length.



FULL BED : Spans 8' of bed length.



DRAWER WEIGHT TEST

How much weight can I put in my TruckVault Secure Storage System, you ask? The easy answer is, more than you can physically pull out! We advise customers that they can pack as much as 200 pounds into each drawer and things will function normally. But to really put our product to the test, we filled two Standard Drawers with 13 cases of shotgun shells and four sporting shotguns—a total of 379 pounds! Fearing this would be too much, we were surprised to find that the weight still didn't come close to reaching the drawers' full capacity. As a result, we're confident each drawer could handle 300 pounds.

TEST RESULTS:
As long as you can pull out and push in the drawers, they can handle more!

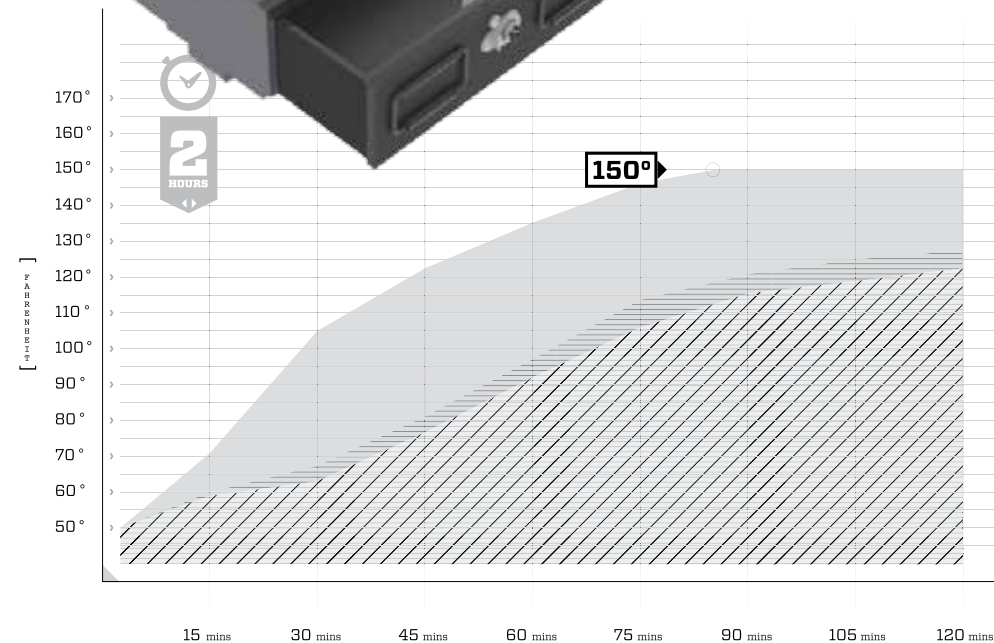
100 100 100
300
POUNDS of GEAR PER DRAWER



13	CASES OF SHOTGUN SHELLS	351 lbs.
04	SHOOTING SPORT SHOTGUNS	28 lbs.
02	STANDARD HEIGHT DRAWERS	6 1/8"

28%
MORE HEAT RESISTANT

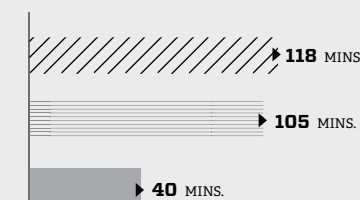
After two hours in a test oven heated to 150° F, each TruckVault remained roughly 28% cooler than the leading metal competitor.



EXTREME ALL-WEATHER TRUCKVAULT
 STANDARD CARPETED TRUCKVAULT
 LEADING METAL COMPETITOR

MINUTES TO 120°

Which products hit the 120 degree mark the fastest? Here are their times...



Test products in the controlled oven



Temperature gauges being prepped for test

DRAWER HEAT TEST

Can TruckVault Secure Storage Systems take the heat? We tracked down a truck-sized oven to find out. Our goal was to simulate punishing desert heat inside a vehicle at midday—150° Fahrenheit. The result? TruckVault products provided superior insulation and protection across the board, making them a superior choice to competing steel or plastic products for protecting sensitive electronics, plastics, food, ammunition and another heat-sensitive cargo.





QUALITY THAT'S BUILT TO LAST.

Distributed by:



SAFESandMORE.com

Text or Call: 888-717-8149
support@safesandmore.com