

# THE CATALOG



**MESA**™  
**SAFE COMPANY**

**BETTER MESA SAFE THAN SORRY!™**

**MESA**<sup>™</sup>  
**SAFE COMPANY**

BETTER MESA SAFE THAN SORRY!<sup>™</sup>





# THE MESA DIFFERENCE

## MESA SAFE COMPANY INTRODUCTION.

**Mesa Safe Company** was founded in 1981 on the premise of providing high quality safes at a competitive price.

Using his expertise as a locksmith, the founder has been designing and building safes with the knowledge that only someone who legally breaks into safes has.

## BETTER MESASAFE THAN SORRY!

With over 40 years of experience in the safe and security industry, Mesa Safes are built using high quality, all steel construction and superior locking systems. This is what we call "The Mesa Difference".

### The Mesa Difference:

**Plastic is for toys**

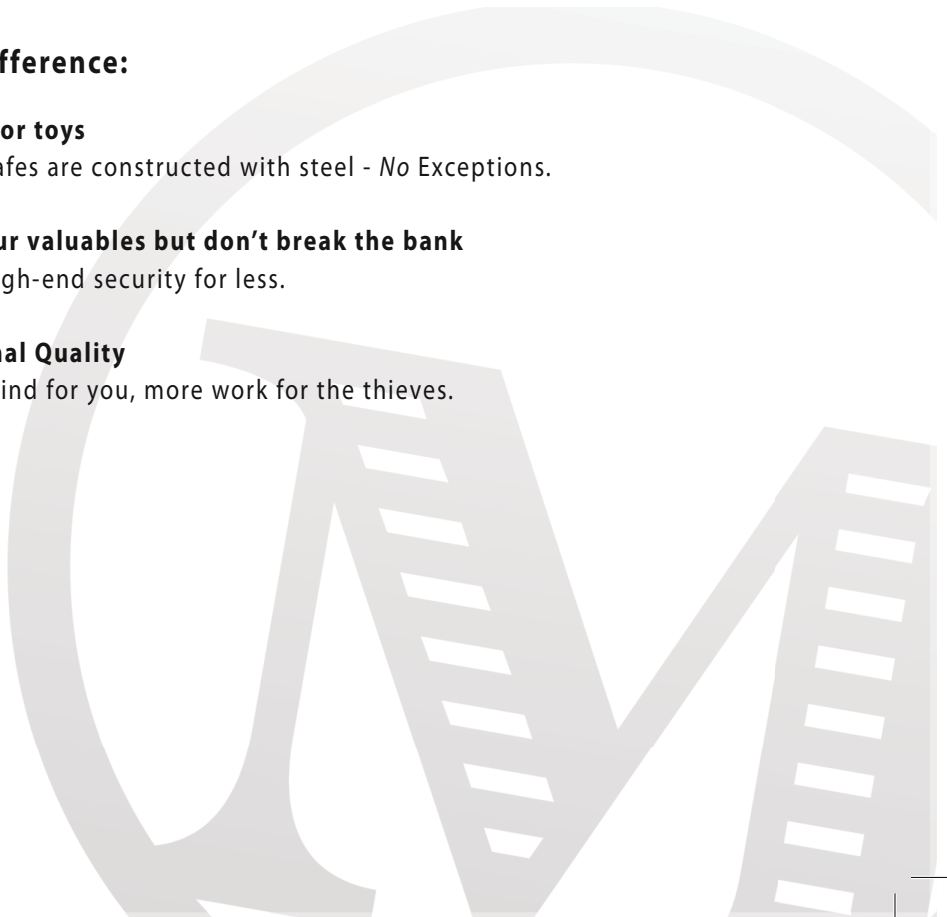
All Mesa Safes are constructed with steel - No Exceptions.

**Secure your valuables but don't break the bank**

We offer high-end security for less.

**Professional Quality**

Peace of mind for you, more work for the thieves.





## SAFE FEATURES

### BODY & DOOR

- All steel construction
- ½" thick solid steel door
- Massive 1" diameter solid steel locking bolts
- Front loading mail box style deposit door accepts larger deposits
- Anti-fish baffle helps prevent fishing through the deposit door
- Heavy-duty solid steel hinges
- Full length solid steel dead-bar
- 4 Pre-drilled anchor holes [Anchor Kit included]

### LOCK

#### Electronic

- Lock protected by a drill resistant hard plate & punch-activated reloading system
- Battery operated electronic lock [9V Battery required; *not included*]
- Programmable 01-59 minute unlocking time-delay
- Optional 2 User code entry system
- 1 Manager code & up to 5 user codes
- Multiple invalid code defense feature
- Override key system [2 Keys included]

#### Combination

- U.L. Listed Group II Combination Lock
- Lock protected by a drill resistant hard plate & punch-activated reloading system

#### Dual Key [only available on MFL2014]

- Dual Key Mechanical Lock
- Lock protected by punch-activated reloading system



MFL2014E



MFL2014E-OLK



MFL2714E



MFL2714E-ILK



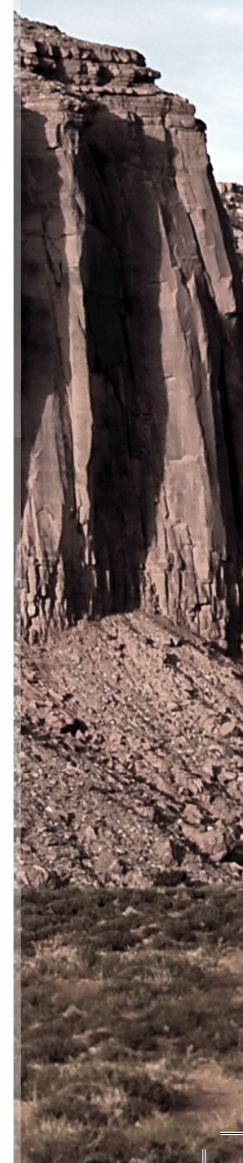
MFL3020E



MFL2731E

MODEL	EXTERIOR [HWD]	INTERIOR [HWD]	INTERIOR [CU.FT.]	SHELVING [NO.]	WEIGHT
MFL2014	20 ¼" x 14" x 14"	8 7/8" x 13 ¾" x 11"	0.8	0	86 lbs
MFL2014-OLK <sup>1</sup>	27 ¼" x 14" x 14"	8 7/8" x 13 ¾" x 11" EXTERIOR COMPARTMENT: 6 7/8" x 13 ¾" x 13 1/8"	1.5	0	110 lbs
MFL2714	27 ¼" x 14" x 14"	16 1/8" x 13 ¾" x 11"	1.4	1	114 lbs
MFL2714-ILK <sup>2</sup>	27 ¼" x 14" x 14"	9 7/8" x 13 ¾" x 11" INTERIOR COMPARTMENT: 5 7/8" x 13 ¾" x 9 7/8"	1.3	0	122 lbs
MFL2731 <sup>3</sup>	27 ¼" x 30 ¾" x 21"	L: 16 1/8" x 15 ¾" x 18" R: 27" x 14 ½" x 18"	6.7	LEFT: 1 RIGHT: 2	247 lbs
MFL3020 <sup>3</sup>	30" x 20" x 20"	T: 8 1/4" x 19 ¾" x 17 1/8" B: 10 ¼" x 19 ¾" x 17 1/8"	3.6	0	188 lbs

<sup>1</sup>Exterior Locker <sup>2</sup>Interior Locker <sup>3</sup>Double-Door Models



# Got Profits?

You need one of these.

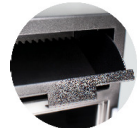
Designed for protection against robbery and internal theft, Mesa Depository Safes allow for quick deposits and secure storage for cash and valuables without requiring access into the contents of the safe - a necessity in every cash handling business.



MFL3020EE

Front loading mailbox-style drop door

A



Heavy-duty steel hinges

B



Optional battery operated electronic lock or a U.L. Listed Group II combination lock

C



1" diameter locking bolts with a 1/2" thick solid-steel door

D



4 pre-drilled anchor holes [anchor kit included]

E



## Carry Cash?

Check out the Mesa Key-Locking Security Bag. Store & Protect coins, cash, checks, documents & other valuables. Great for secure transporting.

Model MDB811T



## Lock Options



2-TONE GRAY/BLACK

**MESA**<sup>™</sup>  
**SAFE COMPANY**  
BETTER MESA SAFE THAN SORRY!<sup>™</sup>

