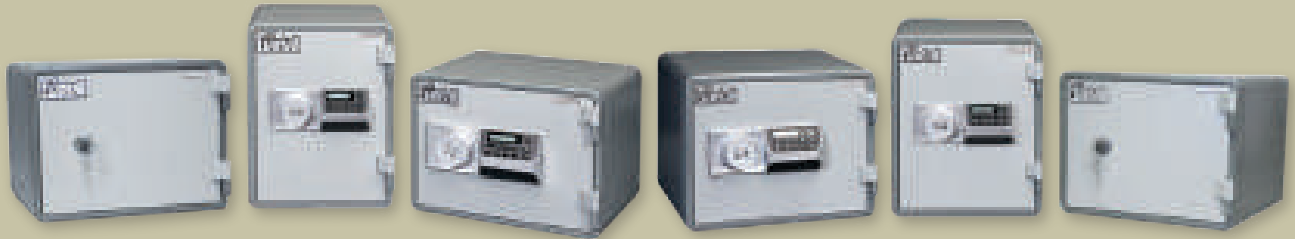


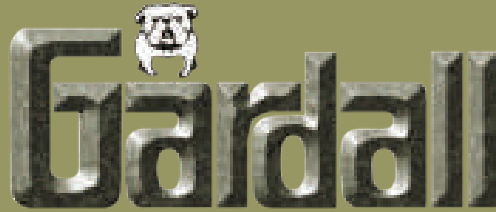


Premium Quality Safes You Can Trust



Safes for Every Application - Commercial • Residential • Small Businesses

AMERICA'S SAFE COMPANY



The Finest Fire and Burglary Protection Available Anywhere in the World!

Gardall designs and manufactures fire and burglary resistive safes to meet or exceed many different standards and specifications.

Standard Safe Classifications

To understand how our safes are classified, here is a brief explanation of the labels you'll find on them.

Fire Protection – Two-Hour 1850° or One-Hour 1700°

Gardall fire-resistive safes meet or exceed Underwriters' Laboratories specifications for explosion, fire endurance and drop tests.

Two-Hour exposure to severe fire with an exterior temperature to 1850°F, and an interior temperature that does not exceed 350°F (paper chars at 405°F) for two hours and cool down.



One-Hour exposure to severe fire with an exterior temperature to 1700°F, and an interior temperature that does not exceed 350°F (paper chars at 405°F) for one hour and cool down.



Residential Security Container Burglary Label

Gardall's 2-Hour Burglary Fire, BF and FB models have passed the U.L.-R.S.C. label test for burglary protection.



Burglary Protection

Gardall safes with the Class "B" or Class "C" Burglary Insurance Rating allow you to receive insurance coverage in accordance with the Broad Form and Mercantile Safe Insurance classifications. Pertinent insurance information is available from Insurance Service Office, 160 Water Street, New York, NY 10038.

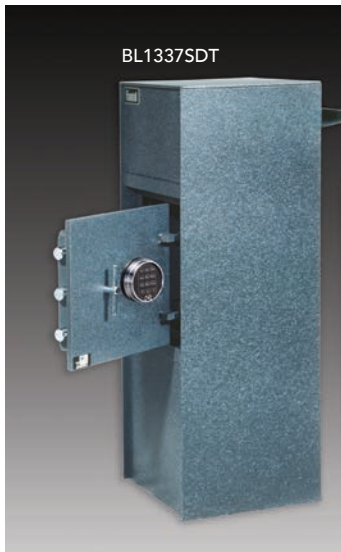
Gardall safes can be supplied with an Underwriters' Laboratory Group II combination lock, U.L. listed key-op lock, U.L. listed dual key lock or a U.L. listed push button electronic lock.

Gardall Lifetime Replacement Warranty

Gardall Safe Corporation assures to the original end consumer, replacement – free of charge – of any Gardall Fire-Resistive Record Safe damaged beyond repair by fire with a then-current production model of a comparable value. This warranty is exclusive and in lieu of any warranty of merchantability, fitness for particular purpose or other warranties of qualities, whether expressed or implied, and of all other liabilities and obligations on the manufacturer's part.

Gardall Safe Corporation reserves the right to inspect any record safe prior to replacement. Copies of insurance reports or documents pertaining to fire loss will be furnished to Gardall Safe Corporation upon request.

Gardall Safe Corporation specifically assumes no liability for installation or other charges incurred by the owner in connection with the replacement of any record safe and assumes no liability for damage to contents or personal property contained in any such file or any consequential damages of any nature or description.



Designed to protect money collection where immediate deposit is required. Deposit can be made into the safe while the door is locked. Exclusive baffle design prevents contents from being removed through the entry opening. Hopper rotor is built into safe body and cannot be removed to gain access to the safe.

Heavy Duty Depositories Standard Design Benefits

- CLASS B Insurance Rating – 1/2" steel door with punch resistant bolt and relocking device to deter forcible entry. 1/4" steel body construction.
- Dual Custody Key Locks – Requires 2 keys to open door for absolute security.
- UL listed, S&G Group II combination lock.
- Triple boltwork with independent relocking device.
- Relocking device – If back cover is knocked off of lock, the independent relock device is activated, preventing bolt withdrawal. Available on either combination or dual key operated doors.

- Rotary Hopper Capacity – 3¾" x 9" x 4" designed to fit most standard money bags and envelopes.
- Front Loading Capacity – designed to fit most large money bags – 2¾" x 10½" x 7½"
- Interchangeable Doors – 2 sizes 9" x 9" and 12" x 12".
- 4 anchoring holes in base.

Standard color: Gray

All specifications are subject to change without notice.

To Operate Front Loading Depository

Pull drop door forward, place items to be deposited inside, release the drop door. Deposited item should drop inside. Open the drop door to be certain.

Model	Outside Dimensions				Inside Dimensions			Inside Cubic Inches	Door Size	Approx. Weight (lbs.)
	H	W	D		H	W	D			
RC1237	36¾"	14½"	13"	T	15¼"	13¾"	10¾"	2180	12"x12"	220
				B	14¾"	13¾"	10¾"	2180		
*BL1337	36½"	14½"	13"	T	12"	13½"	10¾"	1742	12"x12"	215
				B	13¾"	13¾"	10¾"	2032		

Above available as (K) dual key lock (C) Group II combination lock, (KO) key-op lock or (E) S&G 6120 electronic lock. Please specify. *BL designates depository on back side of safe from door. Add 2" to outside depth for dial and handle.

IMPORTANT! These safes are built with the intent of keeping large bills and valuables out of unprotected areas, until deposits can be made. They are not meant to be used as unprotected storage safes for overnight, or lengthy periods of time.

Gardall

SAFE CORPORATION

Manufacturing Premium Quality Safes Since 1950

