



2023 PRO SERIES

DOOR STORAGE



STORAGE SOLUTIONS SO GOOD THEY'RE PATENTED

Browning Safes Pro Series safes are engineered to take full advantage of every inch of interior space. The DPX Door Storage Panel with the patented DPX Quick Access Barrel Rack allows you to store gear, valuables, handguns and long guns on the back of the door. The Quick Access Barrel Rack doubles the number of guns to which you have fast, easy access. The DPX Scope Saver uses the empty space inside the door to protect valuable optics.



DPX PISTOL POUCHES

Keep handguns easy to access and free up shelf space with the sewn-on pouches on the DPX panel.



DPX QUICK ACCESS BARREL RACK

Flexible polymer wings protect the barrel finish, secure the barrel in place and allow firearms to be easily pushed into or pulled from the rack. (U.S. patent #D643500)



DPX SCOPE SAVER

Store more long guns with optics on the DPX door rack with the DPX Scope Saver. This unique recessed panel protects scopes and increases gun capacity.

SAFE CAPACITY



COMPARING THE CAPACITY OF A COMPETITOR'S SAFE (25-28 CUBIC FEET)
TO A PRO SERIES SAFE (26 CUBIC FEET):

**54%
MORE**
GUN STORAGE

A Pro Series safe with half shelf interior holds 20 guns compared to the competitor's 13 gun capacity.

**22%
MORE**
GUN STORAGE

A Pro Series safe with all gun interior holds 33 guns compared to the competitor's 27 gun capacity.

**600%
MORE**
GUN STORAGE

A Pro Series safe with half shelf interior allows fast access to 14 guns compared to the competitor's 2 gun capacity.

**200%
MORE**
GUN STORAGE

A Pro Series safe with all gun interior allows fast access to 21 guns compared to the competitor's 7 gun capacity.

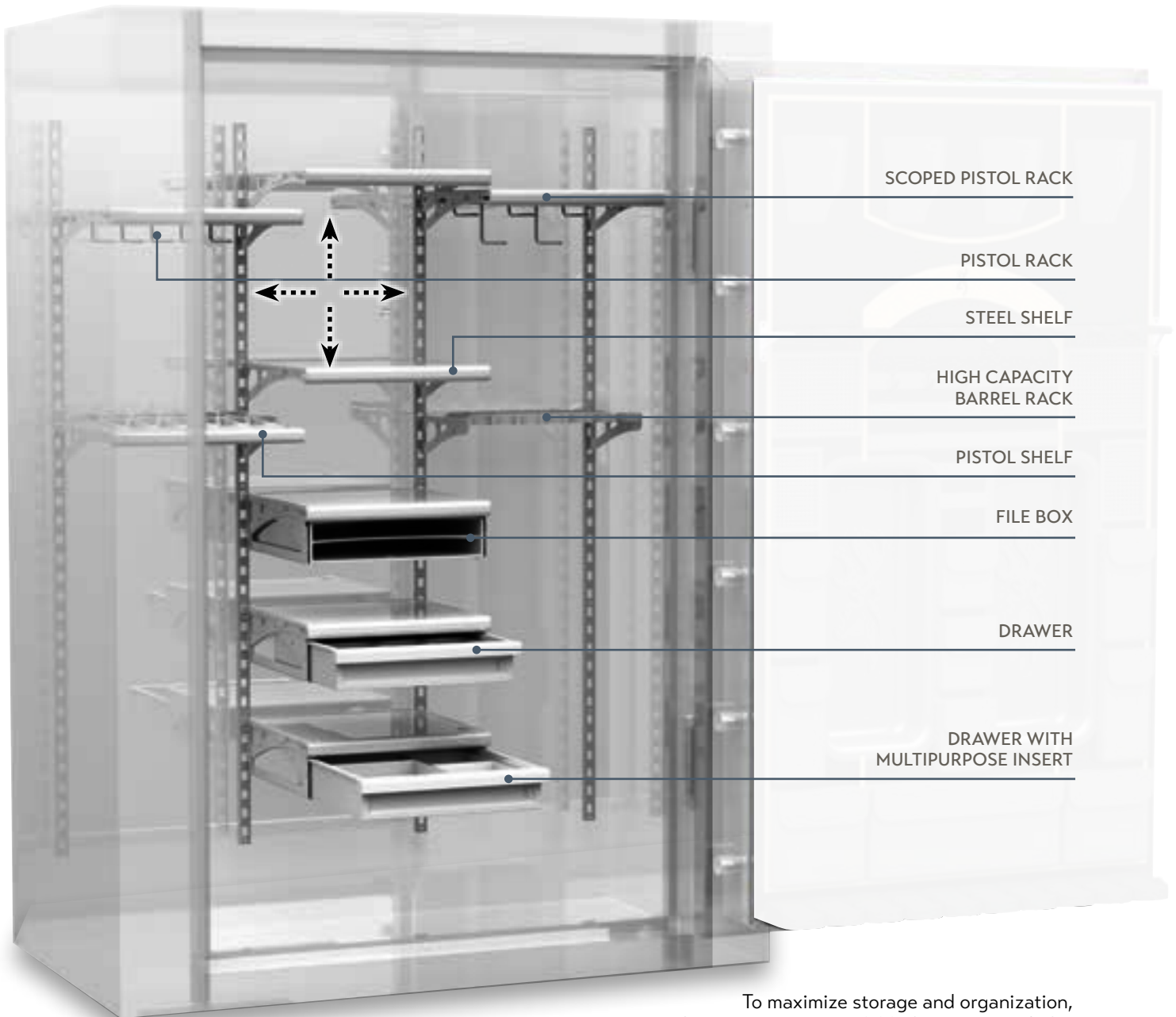
In this brochure you will see numbers such as 13/26+7 listed in the feature bullet copy for each safe series. The first number is the long gun capacity in the safe body with a half shelf interior (13 in the example). The second number is the long gun capacity in the safe body with an all gun interior (26 in the example). The "plus" number is the long gun capacity on the back of the door (+7 in the example).

AXIS SHELVING



EXCLUSIVE TOOLS FOR ORGANIZATION

No other safe interior is as versatile and convenient as the Axis Adjustable Shelving (U.S. patent #D662341) inside a Browning Safes Pro Series safe. This exclusive system offers superior adjustability, is easily changed to meet your storage needs and maximizes space for long guns, handguns, cameras, jewelry, documents, laptops and external hard drives. Accessory drawers and rugged steel shelves (not wood shelves) offer an extra level of customization that allows you to tailor the safe to meet your exact needs.



To maximize storage and organization, a variety of accessories are available for Browning Safes Pro Series safes with Axis Adjustable Shelving. Axis accessories are compatible with safes built in 2018 or later that feature CMS Adjustable Shelving and are greater than 20 cubic feet in size.



STEEL SHELF

The basic shelf is made from tough steel with a protective polymer skin.



PISTOL SHELF

Holds up to 12 handguns. The soft surface protects handguns from damage.



HIGH CAPACITY BARREL RACK

Store up to 13 long guns with this specialized design.



BARREL RACK

Store up to 11 long guns in slots that accommodate shotguns, carbines and rifles.



BOW HANGER

Lock up and protect expensive archery equipment while taking up minimal space.



PISTOL RACK

Holds 5 handguns and leaves the shelf available for other possessions and gear.



SCOPED PISTOL RACK

With a deeper drop and heavy-gauge rods, handguns with optics are easier to store.



FILE HOLDER

This File Holder makes it easier to locate and organize important documents.



DRAWER WITH JEWELRY INSERT

Protect and organize valuables such as watches, rings and necklaces.



DRAWER

This sturdy Drawer is perfect for all sorts of goods that need to be separated.



FILE BOX

Important documents are kept safe and easy to find in this handy File Box.



DRAWER WITH FOAM INSERT

Customizable pick and pluck foam isolates prized possessions inside the drawer.



DRAWER WITH MULTIPURPOSE INSERT

Keeps delicate items organized, protected and easy to find.



DRAWER WITH MONEY INSERT

Compartments are sized to organize cash, passports and other documents.



DEEP DRAWER

The Deep Drawer is perfect for storing a variety of items under a shelf.

FIRE PROTECTION



EVEN MORE PROTECTION

Protecting your guns and other valuable possessions against the ravages of fire is a primary reason to invest in a safe. Browning Safes Pro Series safes feature exclusive ThermaBlock Fire Protection that goes the extra mile with two to three times the fire protection than the competition. ThermaBlock is a multi-faceted approach that eliminates the gaps in fire insulation where damaging heat from a fire can enter into the safe. ThermaBlock relies on our external door hinge design and thicker sheets of fire insulation arranged in an interlocking pattern to minimize gaps in the insulation. Thicker steel and continuous welds minimize heat-caused flex in the body to reduce gaps from forming in the event of a fire. The chart below demonstrates that a Pro Series safe with ThermaBlock technology offers significantly greater fire protection for your guns and valuables than found among comparable safes with internal hinges and standard insulation arrangements.

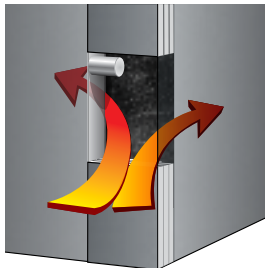
2-3X
THE FIRE PROTECTION



Browning ProSteel Safe with 1-7/8" thick insulation after 100 minutes at 1680° F.

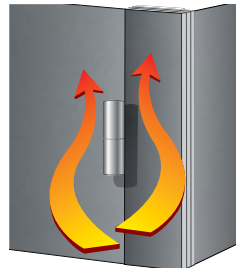


Leading U.S. built competitor safe with 1-7/8" thick insulation after 100 minutes at 1680° F.



COMPETITION'S INTERNAL HINGES

Internal hinges allow up to eight times more heat to radiate inside the safe through gaps in the fire insulation.



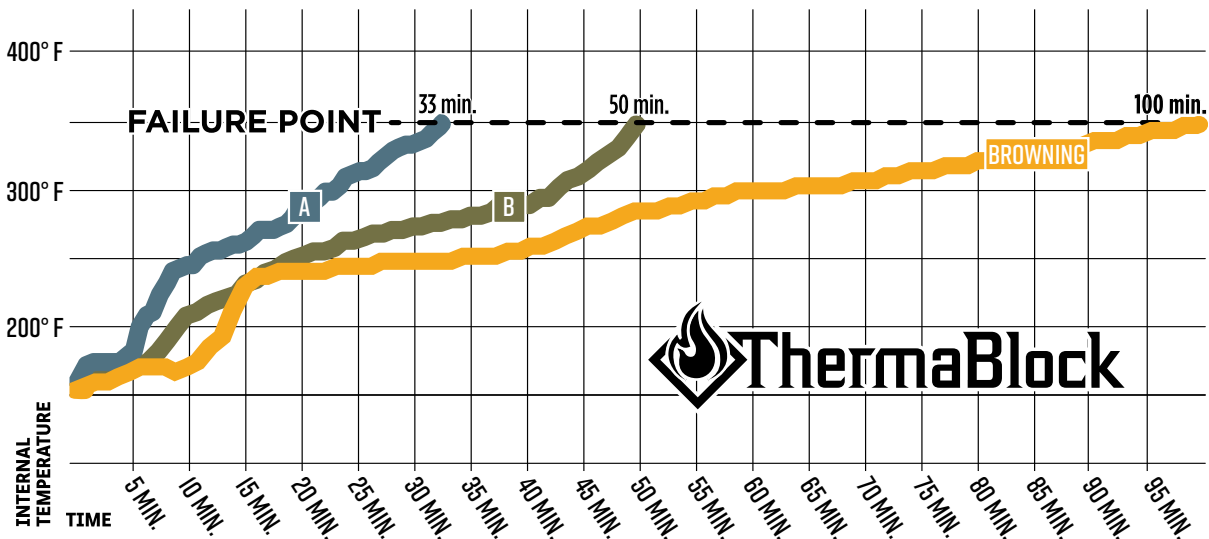
BROWNING SAFES EXTERNAL HINGES

External hinges eliminate gaps in the fire insulation, blocking heat from entering the safe.



THERMABLOCK INTERLOCKING DESIGN

Browning Safes uses interlocking fire insulation to minimize gaps. Fewer gaps reduce heat entry to keep the interior of the safe cooler.



* Competitor A safe: Rated 90 minutes at 1650° F ** Competitor B safe: Rated 90 minutes at 1200° F
Browning ProSteel safe: Rated 100 minutes at 1680° F

SECURITY

THE TOUGHEST SECURITY MEASURES AVAILABLE

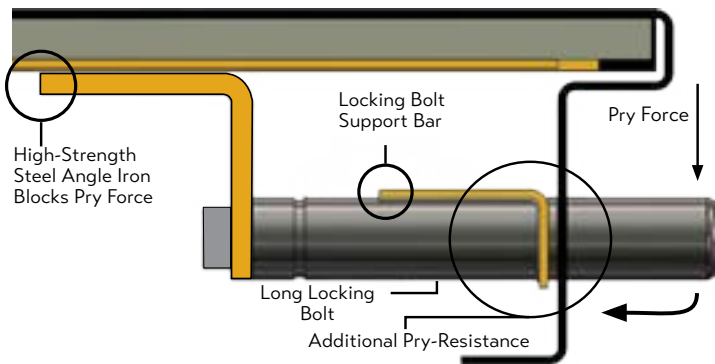
No other gun safe company can match the security found in a Browning Safes Pro Series safe. Our sturdy, formed door frames are reinforced around the entire perimeter of the door opening to create a strong, rigid structure that resists flex from prying. Solid steel MAX Locking Bolts, found on most Pro Series safes, offer up to twelve times more bolt surface area and four times the strength of regular round bolts. Our tough bolt designs, combined with Pry-Stop Corner Bolts or Pry-Stop End Bolts at the door corners give you the most pry-resistant gun safes available.

TL-30, Pinnacle and Prestige safes feature the Gear Drive Locking System that offers the security of cam and linkage systems. The hyper-smooth gear system uses 300 degrees of rotation, and is three times easier to operate than other mechanisms.

The soul of a safe's security system is its lock. That's why all Pro Series safes feature a UL® listed Group II mechanical or Type I electronic lock. The lock is protected by two 1/4" hardened steel plates and four 1/4" hardened steel pins designed to deflect or break drill bits during a drilling attack. These are just a few of the security features that earn Pro Series safes the UL® Residential Security Container Rating. From pry attacks, to punch attacks, to drill attacks and beyond, no other safe provides the security you will find in a Pro Series safe.

Second Layer of Steel

Outer Layer of Steel is Formed to a Thickness of 1-11/16"



DUO-FORMED® DOOR

The best Pro Series safe door is made from multiple layers of steel formed together, plus a full second panel to provide superior strength, pry resistance and attack protection. The door face is 1-11/16" thick.



REINFORCED DOOR FRAME

The door opening of the safe is strengthened by an integrated return flange to increase pry and attack resistance.



FORMED DOOR

The Formed Door is engineered with a rugged steel face. Inner plate and reinforcement panels provide excellent strength and attack protection compared to the competition.



180° HEAVY DUTY HINGES

Rugged exterior hinges allow the door to swing open 180° for ease of access to the safe interior. Door locking bolts maintain security if the hinges are cut off. Fire protection is better than a safe with internal hinges because fire insulation does not need to be removed to accommodate for hinges.



GEAR DRIVE™ LOCKING SYSTEM

The finest Pro Series safe locking mechanism uses robust cam locks and a large, multiple diversion bar system to prevent bolt or handle pressure from reaching the lock. Forces go to the cams and diversion bars, not the lock, for protection unmatched by other locking systems.



HARDENED PIN LOCK PROTECTION

Protecting the locking mechanism from drill attack is a number of hardened steel pins. When a drill bit attempts to breach the pins, they are designed to roll, helping prevent the bit from grabbing the material where it can bore through and eventually reach the lock.



PRY-STOP MAX END BOLTS

Pry-Stop MAX End Bolts replace the standard active locking bolts at the top and bottom of the door opposite the hinge side. Superior to other bolt designs that allow the locking bolt support bar to bend, solid steel Pry-Stop MAX End Bolts are over two and one-half times longer than a standard bolt and attach to high-strength steel angle iron that prevents the locking bolt support bar from bending in a pry attack.



PRY-STOP MAX CORNER BOLTS

Solid steel Pry-Stop MAX Corner Bolts (U.S. patent #8,276,527) provide better protection than other pry-defense designs. Innovative long locking bolts extend diagonally from a reinforced support at the vulnerable corners of the door to protect against pry attack.



FORCE DEFLECTOR™ LOCKING SYSTEM

The Force Deflector Locking System (U.S. patent #7,665,405) prevents bolt or handle forces from reaching the lock by using a rotating cam device. It prevents energy transfer to the lock better than most systems used in the safe industry.

TL-30



SIMULATED LEATHER

PISTOL POUCH

AXIS FILE BOX

AXIS SHELF

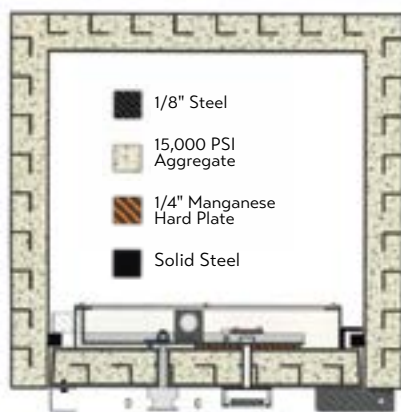
HIGH CAPACITY BARREL RACK

QUICK ACCESS BARREL RACK

DPX SCOPE SAVER

TL-30

- Outside: 68-1/2" x 43-1/2" x 26"
- Inside: 66" x 39" x 17"
- 45 Cubic Feet
- 3,090 Pounds
- Seven 1-1/2" Angled Pins (All Active)
- 52 Gun Capacity (26/39+13)



MULTI-FACETED CONSTRUCTION

High-density aggregate concrete, steel fiber and improved adhesive resins combine to make the TL-30 significantly stronger than safes made with average, construction-grade concrete.

COLOR



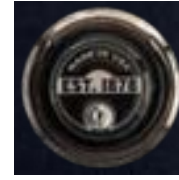
Textured Charcoal

HARDWARE



5-Spoke Black Chrome

LOCK OPTIONS



SG® Mechanical



SG® Top Lit Electronic

APPEARANCE

- Knurled 5-spoke black chrome handle
- Simulated worn leather interior

SECURITY

- 2-1/2" door thickness
- Gear Drive™ Locking System
- 1-1/2" locking bolts on four sides
- 4-way locking bolts – Hinge side protected with 1-1/4" steel bar – Other sides protected by angled pins
- SG® Mechanical or SG® Top Lit Electronic Lock
- Glass Relocker
- Solid 1/2" 3-sided, 1" hinge side fully reinforced door frame
- TL-30 UL® rating

CONVENIENCE

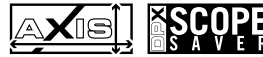
- 180° hinges with heavy duty exterior
- DPX® Door Panel with Quick Access Barrel Rack, Scope Saver and Pistol Pouches
- Axis Drawer with Multipurpose Insert and File Box
- Elevated Floor

FIRE PROTECTION

- 120 minutes at 1,750° F
- Palusol® fire seal
- Two layers of 11-Gauge steel plus 2-1/2" of high-strength aggregate concrete with L-bar reinforcement

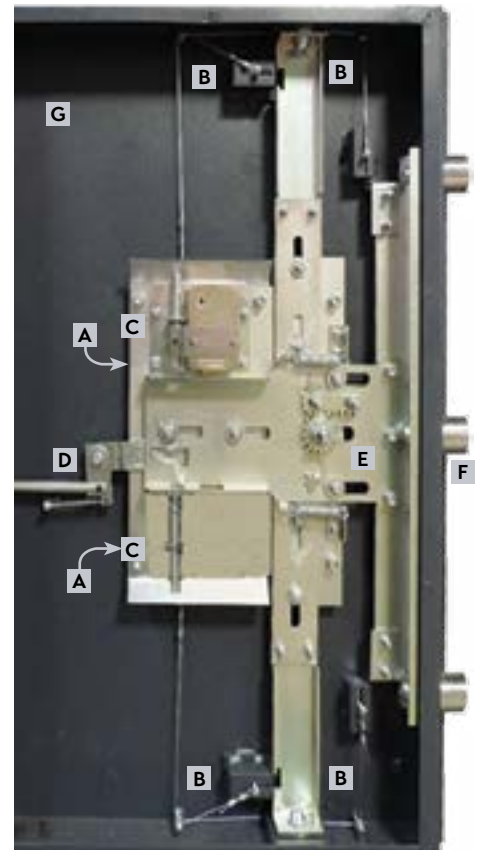


ASSEMBLED IN AMERICA



THE HIGH-STRENGTH LOCKING MECHANISM AND BOLT WORK GUARD AGAINST AGGRESSIVE BREAK-IN ATTEMPTS.

- A. Tempered glass plate** is located between the door slab and the bolt work. The glass protects the locks and central bolt work. Tempered glass is designed to shatter if there is a forced entry attempt with a drill bit, torch or hammer.
- B. Four passive relockers** are controlled by the tempered glass plate. Should the glass plate break, the relockers activate and prevent the bolt work from retracting.
- C. Two passive relockers** are attached to the back of the lock covers. A punch attack on the lock results in the associated relocker firing and blocking the bolt work from retracting.
- D. Bolt Detent** is designed to automatically extend the bolts when the door is closed. If a safe is equipped with an electronic lock, you need not worry about relocking the safe. With the TL-30, a closed door is a locked door.
- E. Rack and pinion gear drive** for smooth, vault-like operation.
- F. 1-1/2" diameter chrome bolts** are extremely resistant to pry attacks.
- G. 2-3/8" thick door** is fortified with high-density barrier materials.





BROWNING[®]

SAFES

Browning Safes • 1400 South State Street • Provo, UT 84603

Distributed in Canada by: Browning Canada Sports Ltd/Ltée
5583 Chemin St-François • St-Laurent, Quebec H4S 1W6

BROWNINGSAFES.COM • 801-373-2385