

TRUCKVAULT®





ONTO THE NEXT ADVENTURE

PARTING WORDS FROM OUR FOUNDER AND LEADER

Farewell, TruckVault.

My good friend, Captain Sy Iffert (1920 -2020), once told me the reason we got along so well was that we always talked about things we were going to do rather than things we had done. To the end, Sy never stopped looking forward. Like him, my focus is on things I'm going to do rather than the things I have done.

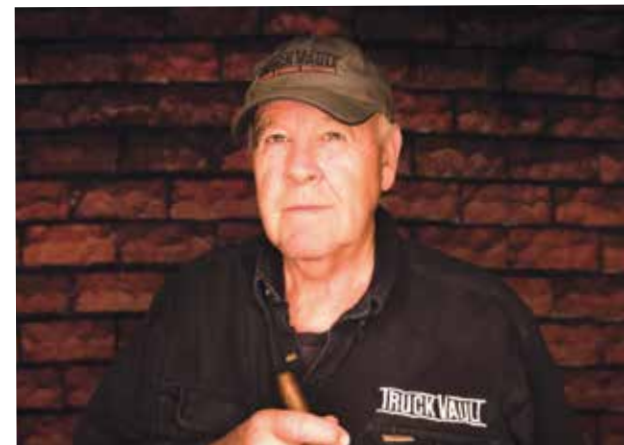
TruckVault has been a great trip, but it is time for the younger, more energetic, and most certainly smarter to take over. Fortunately, TruckVault has no shortage of incredible people with great talent and ideas. With that in mind, a new CEO

will be chosen to take the helm at TruckVault at the end of March 2022. I will be around to answer questions should I be asked.

My rocking chair will continue to collect cobwebs as there is much to do. In June my wife and I will travel to Scotland, England, France, Spain, and Portugal and will return to our duties at our farm at summer's end. Beyond that, who knows what projects come next?

My years at TruckVault have seen customers, colleagues, and vendors become life-long friends, and I thank all of you for sharing this part of my journey. Life is just one adventure after another and I am anxious to move forward to whatever new adventures await.

With gratitude,



Alan Chandler
CEO - AL CHANDLER



LIFE IS JUST ONE ADVENTURE AFTER ANOTHER AND I AM ANXIOUS TO MOVE FORWARD TO WHATEVER NEW ADVENTURES AWAIT.





SECURITY : IT'S OUR #1 PRIORITY

At TruckVault, we take pride in providing our customers with the peace of mind that comes from knowing their valuable gear is secure, no matter where they may leave their vehicle.



PUSH-BUTTON WITH KEY OVERRIDE LOCK

The most secure and trusted lock among law enforcement agencies.



ALL-WEATHER COMPRESSION LOCK

Heavy-duty key lock used in conjunction with All-Weather Series TruckVault Secure Storage Systems.

CUSTOM... IT'S WHAT WE DO

CUSTOM DRAWER SIZING

TruckVault can customize the size, number, and orientation of the drawers of your TruckVault Secure Storage System to create virtually any configuration.

CUSTOM BED CONFIGURATIONS

If you have tanks, tool boxes, gooseneck hitches or any other equipment in the truck bed, just provide us with the detailed measurements, and we can customize an item to fit.

MULTI-STACKED DRAWERS

Sometimes the best direction to go is up. When space is limited, or equipment is at a maximum, we can stack drawers to maximize secure storage.

DRAWER FACE FINISHES

You can even customize the look and feel of your TruckVault Secure Storage System with optional accessory drawer faces in a wide range of high-end wood grain finishes.



OFFERING ONE MORE LINE OF DEFENSE

In today's firearm sensitive culture, it is paramount that weaponry and other valuables be secured responsibly. Strike Guard Technology™ has been added to reinforce the Push Button Key Override Kaba Lock with a flanged lip, consisting of a Strike Plate and Backer Plate constructed of AISI 1020 Galvanized Steel. The Strike Plate works in unison with the Backer Plate and the primary structure of the unit to firmly lock the bolt and help prevent bolt tampering and movement.



STRIKE PLATE

Works in unison with the Backer Plate to help prevent bolt tampering and movement

BACKER PLATE

Works in unison with the Strike Plate to help prevent bolt tampering and movement







OFF GRID LIVING AT ITS BEST

Truck bed living is the new form of adventure, and our camping systems for pickups, SUVs and vans are designed to keep up with you wherever you go, featuring lockable storage that doubles as the perfect sleeping platform. Whether you're braving the elements or sleeping out under the stars, TruckVault gives you the peace of mind you need to kick back, knowing that your sensitive gear is completely secure and protected from any weather or any creatures you might encounter.



IT HAS PROVIDED A SECURE AND VERSATILE SPACE FOR MY EVER CHANGING WARDROBE OF EQUIPMENT. - JOHN HARRINGTON









PROTECT AGAINST WATER & GRIT

Through frigid Montana winters and blistering Texas summers, your gear is protected to the fullest. We've even taken fire hoses to the front of our TruckVault Secure Storage Systems—that's more than 100 pounds of direct water pressure—and not a drop got inside. When put to the test, TruckVault Pickup Series All-Weather products perform every time.



2 DRAWER STANDARD
Pickup // All-Weather Line



HALF-WIDTH STANDARD
Pickup // All-Weather Line



2 DRAWER UTILITY
Pickup // All-Weather Line



OFFSET UTILITY
Pickup // All-Weather Line



2 DRAWER MAGNUM
Pickup // All-Weather Line



OFFSET MAGNUM
Pickup // All-Weather Line

* The All-Weather Series™ is covered by a 3-year limited customer lifetime warranty. See page 55 for more details.



HAVE A GOOSENECK TRAILER?

If you thought your gooseneck hitch was incompatible with a TruckVault, think again. Our gooseneck build is designed to allow full access to your hitch, making secure all-weather storage an option in conjunction with whatever you need to haul. Complete with a two full length drawers and a third for smaller items, there's tons of space for your most sensitive and expensive gear.



I HAVE NO ISSUES WITH THE TRUCKVAULT IMPEDING ME FROM HOOKING UP MY TRAILER... A FEW EXTRA TURNS OR CRANKS ON THE JACKS AND I'M ABLE TO CLEAR THE VAULT. - **SPECIAL OPS OFFICER**

GOOSENECK PickUp - All Weather Line

3 drawer configuration that includes two long drawers spanning the entire length of the bed.



WHY BUY TRUCKVAULT?

- 01

HEAVY-DUTY PUSH BUTTON LOCKS.

Five-button combination locks with key override for easy access provide premium protection and security.
- 02

PREVENTS HARMFUL MOISTURE

Drawers stop potentially damaging condensation brought on by the earth's elements.
- 03

PROTECTS FROM DUST AND DIRT

TruckVault Secure Storage Systems protect from dust, dirt and grit with tightly sealed drawers.
- 04

STRONGER AND LIGHTER

Constructed with extremely tough MDO, TruckVault Secure Storage Systems are stronger than metal or plastic and travel silently.
- 05

PROVEN FIRE RESISTANCE

TruckVault Secure Storage Systems insulate stowed equipment from heat and fire damage.
- 06

PROTECTION FROM THEFT & BREAK-INS

Each drawer system is engineered to resist break-ins, and low-profile models resemble the floor of your vehicle.
- 07

A FIT FOR VIRTUALLY ANY VEHICLE

TruckVault Secure Storage Systems are built to fit the vehicle they are ordered for, ensuring a perfect fit and finish every time.
- 08

SIMPLE INSTALLATION

Nearly every model of TruckVault Secure Storage System can be installed in under an hour and usually includes all hardware you'll need for the job.
- 09

CUSTOM CAPABILITIES

TruckVault's team frequently engineers custom solutions to meet individual customer needs.
- 10

LIFETIME CUSTOMER WARRANTY

Trouble-free operation guaranteed as long as you own your vehicle. Warranty may be transferred (original purchaser only) to new vehicle. Locks have a one-year limited warranty from the lock manufacturer.

MEDIUM DENSITY OVERLAY (MDO)

FEATURES

MDO is a wood substrate formed from weather-resistant resin overlays bonded to multiple layers of wood by heat and pressure. This process creates an extremely strong and durable material that is up to 40% stronger than other plywood products. Trusted in numerous industries, including home construction and concrete formwork, MDO is the perfect material to create a strong, secure, and customizable product.

BENEFITS

As one of the strongest wood materials on the market, MDO is highly dependable for security products. You'll feel the strength the moment you open the drawer. MDO also provides heat, moisture and humidity protection superior to metal enclosures. When you combine these benefits with the ability to completely customize products to a wide range of designs, you have the very best secure storage solution for vehicles on the market.



QUALITY PRODUCTS ARE MADE WITH THE BEST MATERIALS AND CRAFTSMANSHIP. TRUCKVAULT HAS FOUND THE PERFECT ONE-TWO PUNCH.

BLACK COMPOSITE



The default drawer front on every drawer system is Black Composite. This material provides a dense and consistent surface with extremely tight tolerances around the drawer face to ensure maximum security. High-grade wood grain drawer fronts are also available for those seeking a classic look.

CARPET



TruckVault Secure Storage Systems most commonly come completely carpeted inside and out with automotive-grade carpet. Color-matched to industry standards, the carpet blends the drawer system seamlessly with your vehicle's factory interior.

ALL-WEATHER COATING



Weatherproof Armour Coating comes standard with each Pickup Series All-Weather Line TruckVault Secure Storage System. The coating is sprayed on after the drawer system build is completed, ensuring supreme protection from harmful heat, fire, grit and moisture.

CARGOGLIDE

With a CargoGlide, you can access the very deepest portion of your pickup bed without having to crawl on your hands and knees every time you need your unsecured gear. Stop scuffing your knees and straining your back. Install a CargoGlide today!

- Aluminum frames with standard TuffDeck™ surface
- 100% extension, optional 70% extension
- 4.5" side rails with tie-down access
- Stock and custom sizes
- 600-pound to 2,500-pound capacity
- All units tested to 50% overstated capacity for user safety
- Sixteen liner bearings per CargoGlide
- Designed, engineered, and built in USA



CARGOGLIDE
Call For Pricing

HEAVY-DUTY PULL OUT TABLE

An additional work surface you can depend on! Perfect for the operator who needs to work right in the field. Locking heavy-duty slides can support up to 200 pounds, and the standard laminated surface will stand up to the rigors of field work. Available in both bottom table and top tray open tray versions, and carpeted or magnetic dry-erase surfaces.

- Bottom table and open top tray versions
- 200-pound capacity
- Locking heavy-duty slides
- Offered in standard laminated surface with available options of carpeted or magnetic dry erase working surface



HEAVY-DUTY PULL OUT TABLE
Call For Pricing

IN-DRAWER LIGHTING

New and improved in-drawer LED lighting provides 16–20 hours (battery dependent) of white or red light to help illuminate the interior of your drawers. Mount to the interior carpet of your drawer unit using the provided 3M Velcro strips or use the mounting bracket and corresponding screws for a more permanent fixture. Available for \$35 retail by calling today.



IN-DRAWER LIGHTS
MSRP \$35 USD

MAGNETIC MAP BOARDS

A great solution for team planning in the field. Custom and free floating on ledgers, you can either stand them up, use them as a flat writing surface, or take them with you. Installed towards the top of the drawers to preserve storage underneath. Available with or without a pencil cubby.



MAGNETIC MAP BOARDS
Call for Pricing

TRUCKVAULT DAYBOX

Due to increased customer demand, TruckVault is now manufacturing its high-quality line of Class III Dayboxes in two sizes: Standard Height and Magnum Height, both of which will fit securely into our TruckVault Secure Storage Systems. TruckVault Dayboxes meet or exceed all ATF standards for temporary supervised storage of explosives and detonators. Custom sizing is also available.

MAGNUM DAYBOX
MSRP \$445 USD
Inside Dimensions:
12.5" x 6.5" x 3.5"

STANDARD DAYBOX
MSRP \$395 USD
Inside Dimensions:
12.5" x 6.5" x 3.5"



BRACKET SYSTEM
\$110 USD

TECHNOLOGY PLATFORM

The TruckVault Technology Platform (TTP) is designed to provide power and lighting where you need it, when you need it, for as long as you need it.

- TTP 12-volt power for charging and operating mobile devices (5v USB adapters available)
- TTP provides 120-volt power inside drawers (inverter required)
- Cubbies and table extensions for laptops and other portable gear
- Heavy-duty wiring and state-of-the-art cable handling ensure years of dependable service.
- Top, side or inside the drawer power mounting is available.



TECHNOLOGY PLATFORM
Call for Pricing





ENGINEERED FOR SECURITY

Q+A WITH TRUCKVAULT'S ENGINEERING MANAGER

Sheahan McCulla is TruckVault's Engineering Manager, which means he oversees the intricacies of TruckVault builds and is constantly creating new and improved designs. We chatted about his firearm getting stolen, product testing, and the importance of customizability.

Q: You had an experience with gun theft. Tell us a little more about that.

A: On my sixteenth birthday, my parents surprised me with a Savage 308. It was the best present I can ever remember. I loved that gun. A few years later when I was in college, my dad called me and told me that our guns were stolen, including mine, and

I remember I was devastated. That was my baby. That could never be replaced - it was special to me."

Q: How does that experience affect your work?

A: It drives making sure our product is secure. I'd hate for anyone else to have that feeling - something special to them stolen. It drives what we do, how we test, making sure our product is the most secure out there.

Q: How important is product testing to TruckVault's mission?

A: It's important for us to get out and test how it's locked down - make sure these locks function correctly after these bumpy roads. Some of our users use these day in day out and it's gotta be reliable.

Q: Why is customizability a major feature for TruckVault?

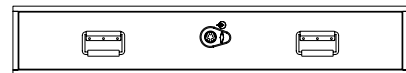
A: By having the core of the TruckVault similar for makes and models, we just need to redesign the wings to fit the contours and the height so the drawers clear. If we can measure it, we can build it.



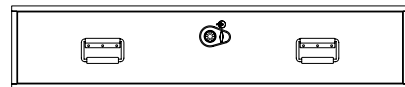
“IT DRIVES WHAT WE DO, HOW WE TEST, MAKING SURE OUR PRODUCT IS THE MOST SECURE OUT THERE. - SHEAHAN McCULLA

PRODUCT OPTIONS AND UPGRADES

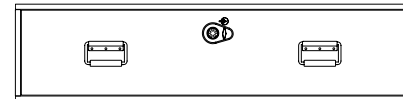
DRAWER HEIGHT



STANDARD HEIGHT : 6 1/8"
Enough vertical room for various low-profile equipment and gear.

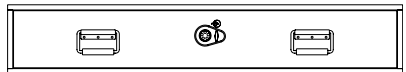


UTILITY HEIGHT : 8 1/8"
Providing additional head space for mid-size equipment and gear.

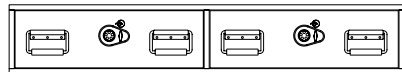


MAGNUM HEIGHT : 10 1/8"
Ample drawer depth for larger equipment and gear.

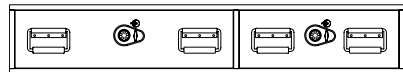
DRAWER COUNT



ONE DRAWER
Open storage space with abundant organizational options, allowing space for larger items.

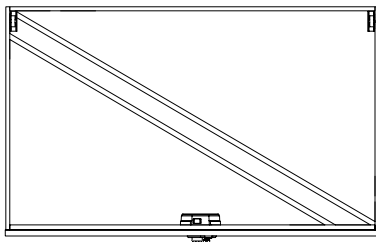


TWO DRAWERS
Splitting up your available storage space can help keep sensitive gear separated.

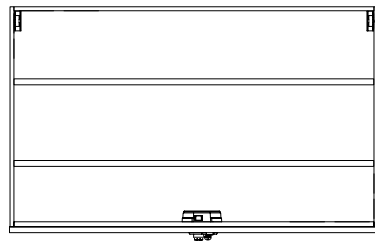


OFFSET DRAWERS
Allowing for larger sized gear to be stored separately from smaller items when needed.

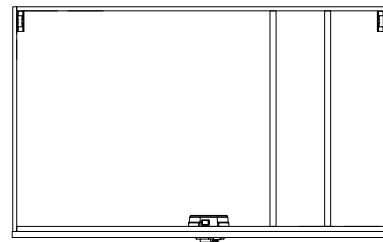
DIVIDER PACKAGES



DIAGONAL
Run from corner to corner, good for long and narrow pieces of equipment.



LONG
Run the length of your longest drawer side and can be positioned in any desired form.



SHORT
Section off the interior drawer into a number of compartments.

DRAWER LOCKS



KABA SIMPLEX COMBO LOCK



SILVER T-LOCK



SLAM LATCH



BLACK T-HANDLE

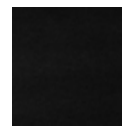


KEYLESS ENTRY FOB



FOLDING T-HANDLE (ALL-WEATHER)

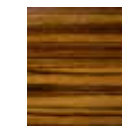
DRAWER FACES



BLACK



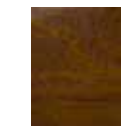
MAHOGANY



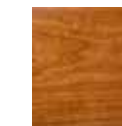
ZEBRAWOOD



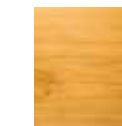
WALNUT



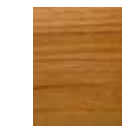
ORVIS TEAK



CHERRY

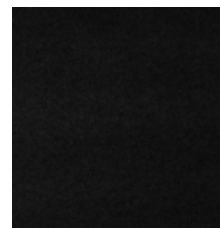


WHITE MAPLE

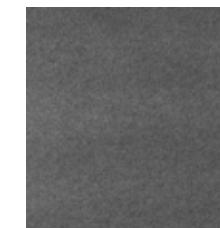


OAK

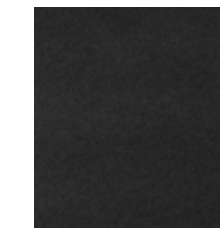
CARPET COLORS



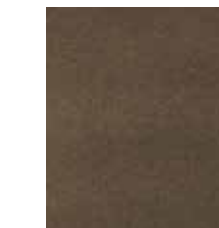
BLACK



GRAY



CINDER

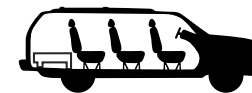


BEIGE

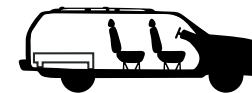


BEDRUG GRAY

VEHICLE LENGTH



SHORT : Fits snug against the 3rd row seat.

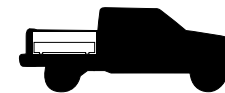


MEDIUM : For vehicles with no 3rd row seats.

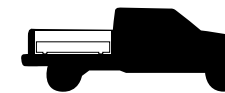


FULL : Extends all the way to the back of the 2nd row seat.

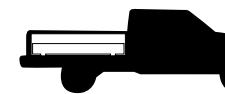
SHORT BED : Spans 5'6" of bed length.



MEDIUM BED : Spans 6'6" of bed length.



FULL BED : Spans 8' of bed length.



DRAWER WEIGHT TEST

How much weight can I put in my TruckVault Secure Storage System, you ask? The easy answer is, more than you can physically pull out! We advise customers that they can pack as much as 200 pounds into each drawer and things will function normally. But to really put our product to the test, we filled two Standard Drawers with 13 cases of shotgun shells and four sporting shotguns—a total of 379 pounds! Fearing this would be too much, we were surprised to find that the weight still didn't come close to reaching the drawers' full capacity. As a result, we're confident each drawer could handle 300 pounds.

TEST RESULTS:
As long as you can pull out and push in the drawers, they can handle more!

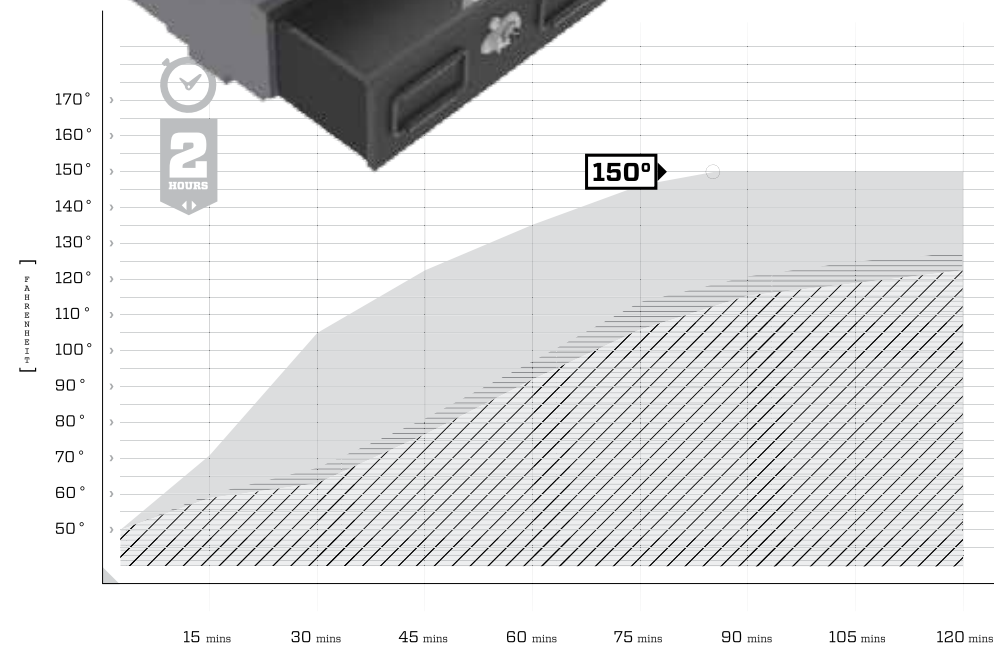
100 100 100
300
POUNDS of GEAR PER DRAWER



13	CASES OF SHOTGUN SHELLS	351 lbs.
04	SHOOTING SPORT SHOTGUNS	28 lbs.
02	STANDARD HEIGHT DRAWERS	6 1/8"

28%
MORE HEAT RESISTANT

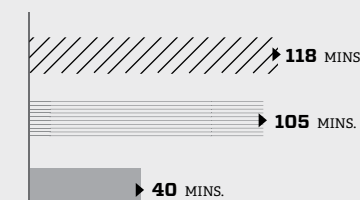
After two hours in a test oven heated to 150° F, each TruckVault remained roughly 28% cooler than the leading metal competitor.



EXTREME ALL-WEATHER TRUCKVAULT | STANDARD CARPETED TRUCKVAULT | LEADING METAL COMPETITOR

MINUTES TO 120°

Which products hit the 120 degree mark the fastest? Here are their times...



Test products in the controlled oven



Temperature gauges being prepped for test

DRAWER HEAT TEST

Can TruckVault Secure Storage Systems take the heat? We tracked down a truck-sized oven to find out. Our goal was to simulate punishing desert heat inside a vehicle at midday—150° Fahrenheit. The result? TruckVault products provided superior insulation and protection across the board, making them a superior choice to competing steel or plastic products for protecting sensitive electronics, plastics, food, ammunition and another heat-sensitive cargo.







QUALITY THAT'S BUILT TO LAST.

Distributed by:



SAFESandMORE.com

Text or Call: 888-717-8149
support@safesandmore.com