

Spacer Slings



Available in comfort recline, comfort recline with head support and hammock. They are made using Spacer fabric; a two way stretch warp knitted polyester with a monofilament “spacer” yarn separating the 2 sides of the cloth. This unique design means the fabric is breathable and contributes to an improved microclimate and therefore improved pressure mapping when seated on the sling.

Practice guidelines suggest that lifting slings should be removed between lifts but this often does not happen due to time constraints, difficulties refitting the sling or specific requests to avoid unnecessary handling. Spacer slings now offer an alternative fabric that doesn't impact negatively on air and moisture permeability and can help eliminate shear.

Two way stretch warp knitted polyester with monofilament spacer yarn

Air and moisture permeable

Range of sizes - Jr | S | M | L | XL

Choice of comfort recline, comfort recline with head support & hammock

Comfort, strength and durability

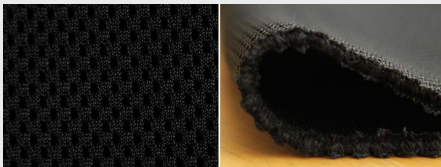
Breathable spacer all day slings



Hammock Sling



Comfort Recline Sling



Spacer fabric cross-section

	Jr (W x L)	Small (W x L)	Medium (W x L)	Large (W x L)	XL (W x L)	S.W.L.
Comfort Recline	70cm x 76cm	78cm x 96cm	88cm x 107cm	106cm x 121cm	118cm x 131cm	250kg