

Bottle Warmer User Manual

Product Name:	Bottle Warmer
Warranty:	12 Months
Product Model:	N2T
US Version:	120V~60Hz
Rate Power:	400W
Recommended Temperature:	15~30 °C
Recommended Humidity:	50~80%
Package:	1pc
Recommended Environment:	Indoor
Product Capacity:	200ml

3

Warning

- o Please check all parts of this bottle warmer to ensure safety and cleanliness before using.
- o Put the bottle warmer on a horizontal place.
- o Make sure that the bottle warmer has been filled with appropriate amount of distilled water to avoid dry burning before plug in. (Bottle should not be floating after adding water).
- o After you plug in the power, the bottle warmer will "beep" prompts that the power is connected.
- o Press the power button, Power light is on.
- o Before connecting the power supply, make sure that the supply voltage is the same as the required voltage for the bottle warmer.
- o Transformer is needed for different voltage.

Explanation of settings



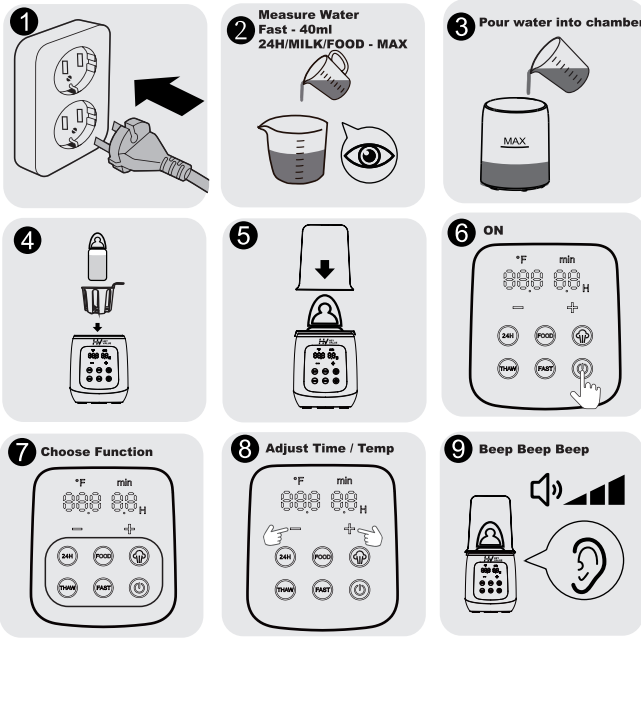
ON/OFF:
Press this button to turn on the appliance and the light is on. Press again to turn off and the light is off.



Choose Function:
The appliance has 5 functions:

5

Below operation diagram is for "FAST/ 24H / THAW / FOOD" only. For " " function, please refer to detail explanation as followed.



7

FAST - Fast Warming



1. Pour 40ml distilled water into the bottle warmer (It is recommended to use distilled water to prevent scaling)
2. Place the bottle and lift-out basket into the bottle warmer.
3. Press the power button, then choose "FAST" function button. The "FAST" icon will start flashing. Screen shows default target milk temperature 37°C/98.6°F and default heating time 3 minutes flashing. You can adjust time while timer is flashing according to reference chart as followed.
The bottle warmer will start working after the time indicator flashes twice. The "FAST" indicator light keeps flashing and timer indicator is counting down while this function is working.
Note: The adjustable range of time is 1-10 minutes.
4. The bottle warmer will beep 5 times at the end of countdown. It will automatically switch to the "24H" mode. The default 24H setting is 37°C/98.6°F, 24 hours. The "FAST" indicator light returns to steady on, while the "24H" indicator light begin flashing.
5. Before feeding, gently shake the bottle and check the temperature of the milk by sprinkling a few drops on the inside of your wrist.

9

FAST - Fast Warming



1. This reference sheet DO NOT provide accurate time due to different initial temp/bottle material/ ambient temp etc will affect final milk temp.
2. Take out bottle in time to avoid overheating. If you find the milk is not warm enough, please place the bottle back into the appliance for a maximum of 0.5-1 minute of extra warming.

Reference Chart Only For Fast Warming Function

Bottle	Initial Temp	Add Water	Milk Volume			
			60mL/2oz	120mL/4oz	180mL/6oz	240mL/8oz
Glass	41°F / 5°C	40ml / 1.4oz	2 min	3.5 min	4.5 min	5.5 min
	68°F / 20°C		1.5 min	2.5 min	3 min	3.5 min
Plastic	41°F / 5°C	40ml / 1.4oz	3.5 min	5 min	6 min	7 min
	68°F / 20°C		2.5 min	3.5 min	4.5 min	5 min

Tips: Please put lid on while fast warming

11

THAW - Defrosting



1. Pour distilled water into the bottle warmer to the maximum scale line (The Max scale line is on the bottle warmer).
2. Place the bottle and lift-out basket into the bottle warmer.
3. Press the power button, then choose "THAW" function button. The "THAW" icon will start flashing. Screen shows default temperature 37°C/98.6°F flashing and default heating time 24 hours steady on. You can adjust temperature while it's flashing. If you want to adjust time, Press "THAW" again, timer indicator will start flashing and you can adjust as desired.
The bottle warmer will start working after the temp/time indicator flashes twice. The "THAW" indicator light keeps flashing and timer indicator is counting down while this function is working.
Note:
-The adjustable range of temperature is 90-108°F.
-The adjustable range of time is 2-59 minutes, 1-24 hours.
-How to adjust time: press "THAW" again, the timer indicator will flash, adjust the time while it's flashing. If you press "THAW" third time, the temp indicator will flash, and you can adjust temp again. Press "THAW" button to switch between temp/time.
4. After the countdown is over, the bottle warmer will beep 5 times, device enters the standby mode.
5. The temperature indicator light always shows the real time WATER temperature while the product is working.

13

Sterilizing



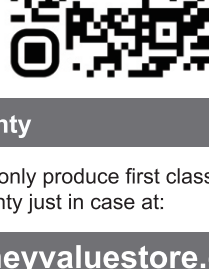
1. Pour 100-150ml distilled water into the warmer (It is recommended to use distilled water to prevent scaling).
2. Place the lift-out basket into the bottle warmer first, then put the bottle and nipple upside down into the bottle warmer. Close the top lid.
3. Press the power button, then choose "Sterilize" function button. The "Sterilize" icon will start flashing. Screen shows default temperature 100°C/212°F steady on and default sterilize time 10 minutes flashing. You can adjust time while timer is flashing as desired.
The bottle warmer will start working after the time indicator flashes twice. The "Sterilize" indicator light keeps flashing and timer indicator is counting down while this function is working.
Notice:
-The temperature of the "Sterilize" function is not adjustable, and the temperature indicator light always shows the actual WATER temperature while the product is working.
-The adjustable range of time is 5-20 minutes.
-The water volume cannot exceed the maximum scale line.
4. After the countdown is over, the bottle warmer will beep 5 times and enter the standby mode.
5. Be careful not to get burned when taking out the bottle after disinfection.
6. If water dry out, the product will shut down due to high temperature detected (you can not turn on the bottle warmer by press the power button at this time). Wait 10 minutes or add 6 OZ room temperature water into the chamber and wait for 3 minutes to cool down the milk warmer, then press the power button to restart.

15

Warranty & Customer service

HEYVALUE strives for user friendly products for newborn and household items. We aim not only to create a product, but also an item that is filled with care love from us to our customers. If you have any issues at all, please contact us directly at (support@heyvaluestore.com) and we will help you out.

Or SMS HEYVALUE to (833)524-0498



Registry Warranty

At HEYVALUE we only produce first class level products, but please registry your warranty just in case at:

<https://heyvaluestore.com/warranty>



17

HEARTFELT THANK YOU

Thank you so much for purchasing from us and placing your trust in our brand.

Heyvalue - designed with everyday value Heyvalue committed to creating modern and thoughtful baby products. We are always passionate and devote to making the ideal products show care and love. Choose HEYVALUE, enjoy your parenthood.

For any questions or issues, please email us:

Support@heyvaluestore.com

Or SMS HEYVALUE to (833)524-0498

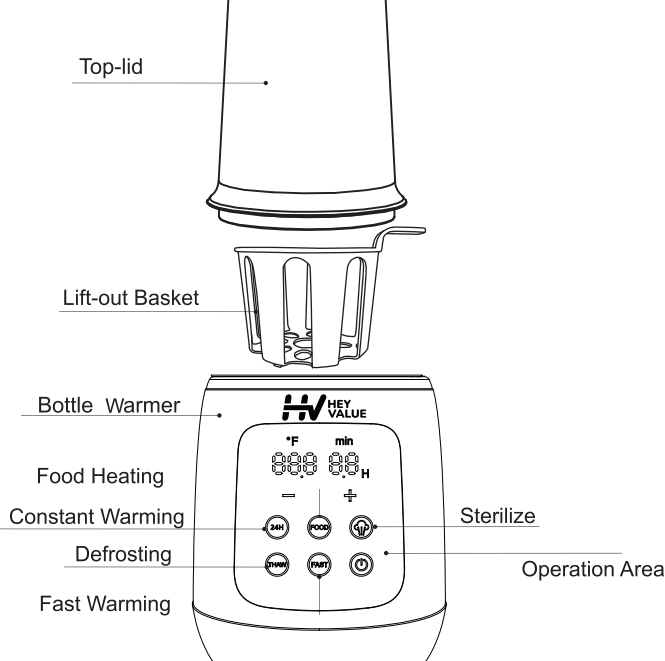
We will go above and beyond to resolve any customer issue within 24 hours.



Best Regards,
Jessie
Founder of HEYVALUE

2

Instruction



*Note:
Don't touch the device while it's working to prevent burns.

4

Explanation of settings



FAST: (add 40ml distilled water into warming chamber)
Select this function to warm milk or water quickly in 2-6 minutes. The device will switch to 24H constant warming mode automatically when timer run out.
Screen shows target milk temperature and remaining warming time.
* Take the bottle out immediately after timer run out to avoid overheating. If you overheat breast milk, valuable nutrients and vitamins may be lost.
* Remember to put lid on while use this function.



24H: (add distilled water to MAX into warming chamber)
Select this function to keep warm milk slowly and keep in certain temperature for up to 24 hours.
Screen shows real time WATER temp (not milk/food) temp and remaining heating time.



THAW: (add distilled water to MAX into warming chamber)
Select this function to defrost frozen milk slowly.
Screen shows real time WATER temp (not milk/food) temp and remaining heating time.



FOOD: (add distilled water to MAX into warming chamber)
Select this function to heat baby food and keep it in certain temperature for up to 24 hours.
Screen shows real time WATER temp (not milk/food) temp and remaining heating time.



STERILIZE: (add 100-150ml distilled water into warming chamber)
Select this function to sterilize baby bottles or pacifiers.
Screen shows real time WATER temp and remaining sterilize time.



Restore Factory Settings:
In standby mode (Power button flashes breathing light), press and hold the "+" button for about 2 seconds until device emit a "beep" sound. The product will be restored to factory settings.

6



1. This bottle warmer has smart memory function, it will remember last time setting to save your trouble to set again for next time using.

2. If water dry out, the product will shut down to prevent dry burning (you can not turn on the bottle warmer by press the power button at this time). Wait 10 minutes or add 6 OZ room temperature water into the chamber and wait for 3 minutes to cool down the milk warmer, then press the power button to restart.

8

Notice:

1. The temperature of the "FAST" function is not adjustable, this setting helps to warm milk to "37°C/98.6°F" by steady, screen shows the target final milk temp.
2. Screen shows real-time WATER temp in 24H setting, don't worry if screen shows high temp at this time, it's not equal to milk temperature. Higher temp water is for warming faster in FAST setting. The water temperature will decrease and stabilize at body temperature in 24H mode for keeping milk warm 24 hours.
3. After the product starts working, the corresponding function indicator keeps flashing.
4. The speed of warming milk depends on the milk volume, it's initial temperature, i.e. room temperature or fridge temperature.
- When you find the milk is not warm enough, you can place the bottle back into the appliance for a maximum of 0.5-1 minutes of extra warming. This will create a slightly warmer result but without overheating.
- If you leave the bottle in the bottle warmer longer than the time indicated in the setting table, the milk may become overheated.
5. If water dry out, the product will shut down due to high temperature detected (you can not turn on the bottle warmer by press the power button at this time). Wait 10 minutes or add 6 OZ room temperature water into the chamber and wait for 3 minutes to cool down the milk warmer, then press the power button to restart.

Caution: The water in the bottle warmer might be hot after finishing warming milk/baby food. Be careful that hot water can cause serious burns.

10

24H - Constant Warming



1. Pour distilled water into the bottle warmer to the maximum scale line (The Max scale line is on the bottle warmer).
2. Place the bottle and lift-out basket into the bottle warmer.
3. Press the power button, then choose "24H" function button. The "24H" icon will start flashing. Screen shows default temperature 37°C/98.6°F flashing and default heating time 24 hours steady on. You can adjust temperature while it's flashing. If you want to adjust time, Press "24H" again, timer indicator will start flashing and you can adjust as desired.
The bottle warmer will start working after the temp/time indicator flashes twice. The "24H" indicator light keeps flashing and timer indicator is counting down while this function is working.
Note:
- The adjustable range of temperature is 35-60°C (95-104°F).
- The adjustable range of time is 2-59 minutes, 1-24 hours.
4. When the temperature reaches and stabilizes at 37°C/98.6°F or other temp you set, the bottle warmer will beep 5 times to remind you to check whether your milk is ready.
5. The temperature indicator light always shows the real time WATER temperature while the product is working.

Caution:
It is normal that temperature on screen will fluctuate before stabilize at target temperature, it may be higher than set temperature. Do worry this function will not overheat the milk. The device is built with smart sensor which will self-regulating and find a fastest heating mode to reach target temperature. The temperature will remain solid after half an hour and by that time your milk is ready. The time may be longer or shorter depends on the milk volumes and it's initial temperature.

12

FOOD - Food Heating



1. Pour distilled water into the bottle warmer to the maximum scale line (The Max scale line is on the bottle warmer).
2. Place the baby food container and lift-out basket into the bottle warmer.
3. Press the power button, then choose "FOOD" function button. The "FOOD" icon will start flashing. Screen shows default temperature 70°C/158°F flashing and default heating time 6 hours steady on. You can adjust temperature while it's flashing. If you want to adjust time, Press "FOOD" again, timer indicator will start flashing and you can adjust as desired.
The bottle warmer will start working after the temp/time indicator flashes twice. The "FOOD" indicator light keeps flashing and timer indicator is counting down while this function is working.
Note:
-The adjustable range of temperature is 50-80°C (122-176°F).
-The adjustable range of time is 2-59 minutes, 1-24 hours.
-Press "FOOD" button again to switch between temp/time.
-The temperature indicator light always shows the real time WATER temperature while the product is working.
4. After the countdown is over, the bottle warmer will beep 5 times, device enters the standby mode.
5. Make sure to stir the baby food during warming as it does not circulate automatically. Before feeding, please remember to stir the food well and make sure the food is heated evenly.

14

Cleaning

- Unplug the bottle warmer and make sure it cooling down before cleaning.
- Do not immerse the working base for cleaning.

It is recommended to use distilled water to prevent scale. Acetic acid or other descalers can help you clean the scale efficiently.

Descaling

It is recommended to descale the bottle warmer every four weeks to ensure it continues to work efficiently.

1. Mix 10g citric acid cleaner with 200ml/3.4oz of cold water to descale the bottle warmer. Turn on the bottle warmer, select the STERILIZING FUNCTION then wait for 2-3 minutes after boiling, the descaling is completed.
2. Mix 50ml/1.7oz of white vinegar with 100ml/3.4oz of cold water to descale the bottle warmer. Switch on the bottle warmer, select the MILK WARMING FUNCTION and wait for 10 minutes. Leave the solution in the bottle warmer until all scale has dissolved.

*Note:

1. Never dry out
2. Do not use other types of descalers

16