



forté  
HEALTHCARE



# SOVEREIGN S4

High Care Ventraflow Pressure Care Mattress

# SOVEREIGN S4

High Care Ventraflow Pressure Care Mattress

Advanced High-Risk Foam Support Surface incorporating Ventraflow and Airoform Technology, suitable for superior long-term care, comfort and pressure redistribution

The Sovereign S4 mattress provides trusted and proven care for clients requiring a high-risk foam surface that balances immersion, breathability, postural support, superior comfort, and outstanding performance.

Deep immersion and micro-climate are achieved through the Ventraflow multi-zone Inner core technology designed and manufactured by Forté Healthcare. High-performances foams used in the construction of the mattress, combined with the Premiflex Ultra Premium Breathe Pressure Care cover ensures ultimate longevity and consistency of care.



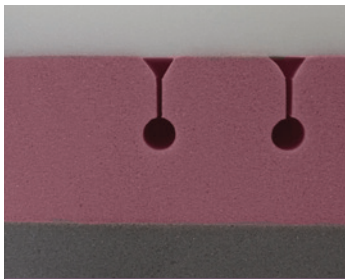
# FOAM CORE FEATURES

---



## AIROFORM MEMORY IMMERSION INTERFACE LAYER

- » High Temperature Stability to deliver consistent immersion, performance and comfort
- » Maximises Patient contact with Support Surfaces Providing Pressure
- » Alleviates localised pressure points
- » Depth calibrated to maximise functionality and patient mobility
- » Prevents collapse, tearing and side-ways twisting of second layer to ensure patient receives full immersion benefit
- » Unique Airoform Breathe ventilation system minimises heat entrapment and enhances core circulation providing a cooler sleep surface
- » Visco-elastic/Memory Foam cell structure provides low-shear surface
- » Firmness: Soft



## VENTRAFLOW® MULTI-ZONE INNER CORE TECHNOLOGY

- » Individual profiled castellations within the immersion region cradle the patient and conform to bony prominences.
- » Lateral and longitudinal air channels facilitate free movement of air throughout foam core improving internal micro-climate and reducing 'hot-spots'
- » Zoned to provide maximum patient support and immersion.
- » Provides exceptional comfort and support for repositioning



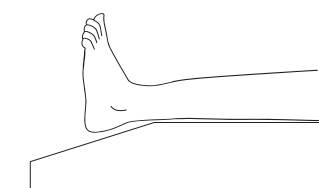
## PREMIUM FIRM FOUNDATION LAYER

- » Provides protection against 'bottoming-out' during transfer, repositioning and whilst in the inclined/fowler position
- » Provides exceptional comfort, support for repositioning and patient care



## HINGED STRENGTHENED SIDES

- » Increase lateral stability of support surface
- » Improves patient safety and encourages central patient positioning
- » Make patient transfers easier
- » Unique hinge profile reduces foam fatigue and allows the mattress to easily conform to varied bed positions
- » Enables ease of primary patient care



## SLOPED HEEL PRESSURE TRANSFER ZONE

- » Enhances pressure redistribution & protection for critical at-risk heel region
- » Offloads pressure from the patients heels and transfers it to calf area
- » Unobtrusive, does not require any adjustment

# COVER FEATURES

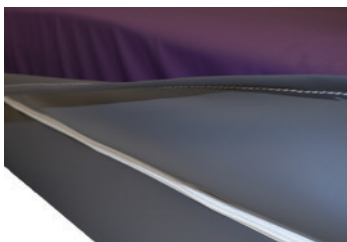
---



## OUTER COVER

### PREMIFLEX PREMIUM PFPU1100 POLYURETHANE PRESSURE CARE UPPER MATERIAL

- » High Performance, Single Sided Polyurethane
  - » 4-Way/Bi-Directional stretch for shear protection, immersion & envelopment
  - » Vapour permeable and breathable
  - » Resistant to patient body fluids
  - » Flexible and gentle to the skin
  - » Superior resistance to cleaning agents
  - » Standard Colour: Purple/Grape
-



### DOUBLE COATED POLYURETHANE BASE

- » Durable
  - » Protects foam core against the bed base
  - » Provides exceptional conformity and profiling to medical bed surfaces
  - » Superior resistance to cleaning agents
  - » Standard Colour: Deep Grey
- 



### CLEANING & CARE

- » 10,000ppm disinfection chemical suitability
  - » Wipe clean
  - » Stain Resistant
  - » Anti-microbial protected
- 



### COMPLIANCE

- » Fire retardant, meets BS 6807 ignition source 5 and BS 7175 ignition source 5 standards
  - » Anti-microbial protected
  - » All seams high frequency welded, no exposed sewn seams
  - » Meets and exceeds facility requirements
  - » Material manufactured in Belgium, to Forté specification
- 



### FULL VAPOUR PERMEABILITY

- » Allows vapour to travel right through the cover at a controlled rate
  - » Reduces risk of internal infection entrapment and optimises core micro-climate
- 



### CONSTRUCTION

- » All seams high frequency sealed & welded
  - » 180° / two-sided integrated zipper
  - » Waterfall Fluid Penetration Flap
  - » TGA Compliant Product Labelling
- 



### WATERFALL ZIPPER PROTECTION FLAP

- » Protects additional protection against fluid ingress through zipper
  - » Meets infection control guidelines
-

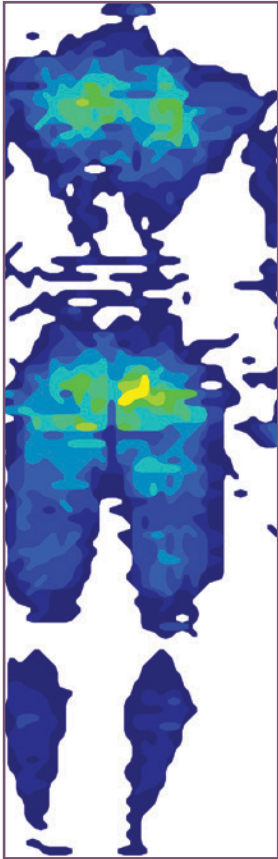
# SPECIFICATIONS



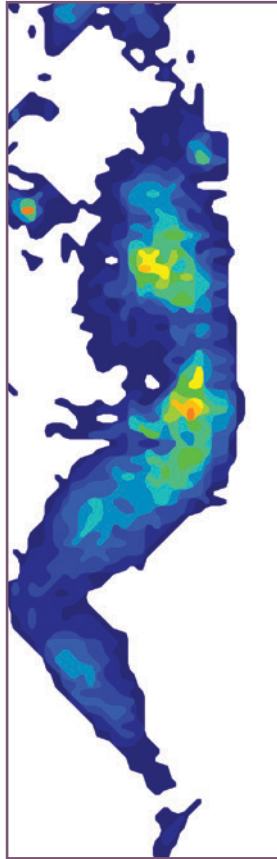
Code	Dimensions (L x W x D mm)	Size	Product Ratings	
<b>S4S1000</b>	1980x880x150	Single	Shear & Friction	0 ———●———— 5
<b>S4SL1000</b>	2030x880x150	Single, Long		
<b>S4KS1000</b>	1980x1050x150	King Single	Repositioning	0 ———●———— 5
<b>S4KSL1000</b>	2030x1050x150	King Single, Long		
<b>S4EW1000</b>	1980x1150x150	Extra-Wide	Infection Control	0 ———●———— 5
<b>S4EWL1000</b>	2030x1150x150	Extra Wide, Long		
<b>S4D1000</b>	1980x1350x150	Double	Firmness	0 ———●———— 5
<b>S4DL1000</b>	2030x1350x150	Double, Long		
<b>S4Q1000</b>	1980x1530x150	Queen	Moisture & Microclimate	0 ———●———— 5
<b>S4QL1000</b>	2030x1530x150	Queen, Long		
<b>S4K1000</b>	1980x1850x150	King	Performance & Longevity	0 ———●———— 5
<b>S4KL1000</b>	2030x1850x150	King, Long		
-	Customise	To suit any bed platform	Mobility & Function	0 ———●———— 5
<b>Cover</b>		<b>Warranty</b>		
Premiflex Ultra		5 Year Foam 4 Year Cover (Premiflex Ultra)	Pressure Care Rating	MEDIUM - HIGH RISK
<b>Therapeutic Weight Range</b>			<b>Applications</b>	
25 - 150kg			» Hospital Wards » Aged Care » Palliative Care » Homecare	

# CLINICAL PRESSURE MAPPING

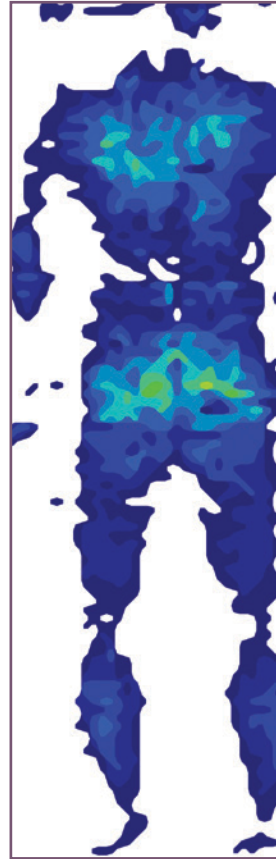
FOWLER - Elevated Legs



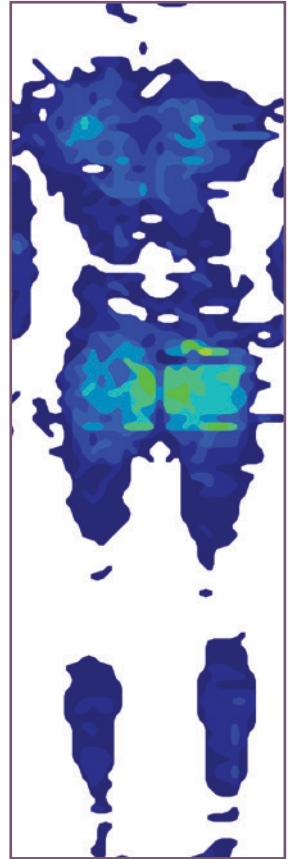
LATERAL RECUMBENT



SUPINE - Elevated Legs



SUPINE



Tekscan Pressure Measurement System 7.20C  
SENSOR\_TYPE 5400D  
ROWS 104  
COLS 34  
SENSEL\_AREA 2.89008 cm<sup>2</sup>  
SECONDS\_PER\_FRAME 0.010319  
MICRO\_SECOND 0  
UNITS mmHg

## NOTES

### PRESSURE MAPPING PARAMETERS

**Bed Surface:** Alrick, 5 Function Electric Hospital/Homecare Bed

**Ambient Temperature:** 21°C

**Duration:** Pressure Mapping was captured after 6 hours of subject laying upon support surface

**Subject:** 98kg, Male, Height: 188cm



GLOBAL TECHNOLOGY  
AUSTRALIAN MADE

All mattresses are made by  
Forté Healthcare in Armidale  
NSW in accordance with all  
Australian manufacturing  
and clinical standards.