



forté
HEALTHCARE

ZEPHAIR Lite

Gentle Critical Care Air Mattress System

FEATURES

The Zephair Lite Gentle Critical Care Air mattress system provides true leadership when patient care demands unprecedented comfort alongside outstanding care for lightweight users.

The Zephair Lite, manufactured by Forté Healthcare, is specifically designed to deliver the best possible care for young and lightweight patients. Adjusted air pressure levels and softer Airoform Immersion layers create a tailored critical care Air Mattress System catering to users 12-90 kg. The Zephair can be customised to fit any bed platform, including cots.

Tried and trusted by facilities and homecare alike, the Zephair provides Gentle Critical Care, Pressure Injury Prevention, Pain Management, Comfort & Compliance, Stability and Safety and mitigation of Falls Risk



Foam Core & Air Cells »



PATIENT INTERFACE - UPPER LAYER

- » Airoform Response Soft Immersion Interface
- » High open-cell elasticity for patient immersion
- » Anti-microbial treatment applied to foam maximises longevity and core micro-climate
- » Conforms to EPUAP, NPUAP & PPIA Guidelines for quality and comfort.



PATIENT INTERFACE - LOWER LAYER

- » Airoform Memory Extra-Soft Breathe Immersion Layer
- » High Temperature Stability to deliver consistent immersion, performance and comfort
- » Maximises Patient contact with Support Surfaces Providing Pressure Redistribution
- » Alleviates localised pressure points
- » Depth calibrated to maximise functionality and patient mobility
- » Prevents collapse, tearing and side-ways twisting of second layer to ensure patient receives full immersion benefit
- » Increases lateral shear relief by connecting cells within second layer together
- » Unique Airoform Breathe ventilation system minimises heat entrapment and enhances core circulation providing a cooler sleep surface
- » Visco-elastic/Memory Foam cell structure provides low-shear surface
- » Firmness: Extra-Soft



PREMIUM FIRM FOUNDATION LAYER

- » Provides protection against 'bottoming-out' during transfer, repositioning and whilst in the inclined/fowler position
- » Provides exceptional comfort, support for repositioning and patient care
- » Provides protection to air system from bed base
- » Provides patient protection should a prolonged power outage occur.



22 CELL, ALTERNATING AIR SYSTEM

- » 125mm depth facilitates immersion
- » TPU Material - Ultra-flexible, soft-touch material. Deflects easily for better immersion and envelopment. No sound of 'crackling' when alternating.
- » 22 cell system. Narrow cell design minimises patient disturbance yet provides full air system
- » Available in Single or King Single Width. Wider sizes are manufactured with pressure care & comfort infill panel / mattress.



EASY TO ACCESS CPR

- » Positioned on air supply tubes
- » Access is not impeded by bed linen or side rails.



MODULAR DESIGN

- » Every component is modular and replaceable for low ongoing operational costs
- » 360° access zipper for ease of maintenance.



SILENT ERGONOMIC PUMP

- » Designed to suit a light-weight user
- » Silent operation minimising patient disturbance
- » Intuitive, simple operation
- » One-touch quick-change air filter for ease of maintenance
- » Mounts to wide variety of beds
- » Quality componentry
- » Full after-sales backup and support
- » Low pressure indication & power failure alert.



POWER CORD SAFETY RETENTION SYSTEM

- » Integrated loops enable the power cord to be fastened to the side of the mattress
- » Prevents trip hazards and power cord entrapment by adjustable bed surface
- » Press-stud closure allows easy fitment.

COVER FEATURES

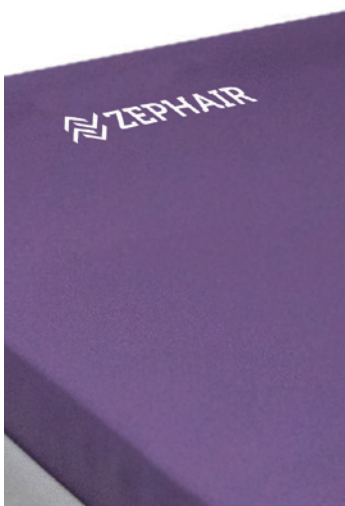


« Permiflex Ultra Cover & Pump



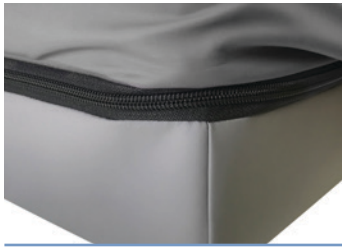
SUPER SHEAR INNER COVER

- » Low friction, Anti-Shearing Inner cover compartmentalised to segregate the modular regions of the Zephair in turn delivering a series of shear reduction levels
- » Dramatically reduces shearing forces at the patient interface
- » Fine stretch Lycra based material is wrinkle free and conforming to varied bed positions
- » Provides additional protection to the foam core.



PREMIFLEX PREMIUM PFPU1100 POLYURETHANE PRESSURE CARE UPPER MATERIAL

- » Premiflex PFPU1100 Pressure Care Polyurethane Upper Material: 4-Way Stretch, Vapour Permeable, Purple
- » Double Coated Premiflex PFPU1200 Polyurethane Base Material: Robust, vapour permeable, Deep Grey
- » Full vapour permeability
- » Infection Control & Compliance: 10,000ppm Chlorine Based cleaning agent concentration suitability, inherent anti-microbial protection, fire retardant, high frequency sealed and welded seams
- » Construction: Four-sided / 360° high frequency welded zipper, Zipper Waterfall Protection Flap, High Frequency Sealed and Welded Seams, Integrated Carry Handles
- » Fine Stretch Lycra Based Material is wrinkle free and conforming to varied bed positions
- » Provides additional protection to the foam core.



DOUBLE COATED POLYURETHANE BASE

- » Durable
- » Protects foam core against the bed base
- » Provides exceptional conformity and profiling to medical bed surfaces
- » Superior resistance to cleaning agents
- » Standard Colour: Deep Grey



CLEANING & CARE

- » 10,000ppm disinfection chemical suitability
- » Wipe clean
- » Stain Resistant
- » Anti-microbial protected



COMPLIANCE

- » Fire retardant, meets BS 6807 ignition source 5 and BS 7175 ignition source 5 standards
- » Anti-microbial protected
- » All seams high frequency welded, no exposed sewn seams
- » Meets and exceeds facility requirements
- » Material manufactured in Belgium, to Forté specification



FULL VAPOUR PERMEABILITY

- » Allows vapour to travel right through the cover at a controlled rate
- » Reduces risk of internal infection entrapment and optimises core micro-climate



CONSTRUCTION

- » All seams high frequency sealed & welded
- » 180° / two-sided integrated zipper
- » Waterfall Fluid Penetration Flap
- » TGA Compliant Product Labelling

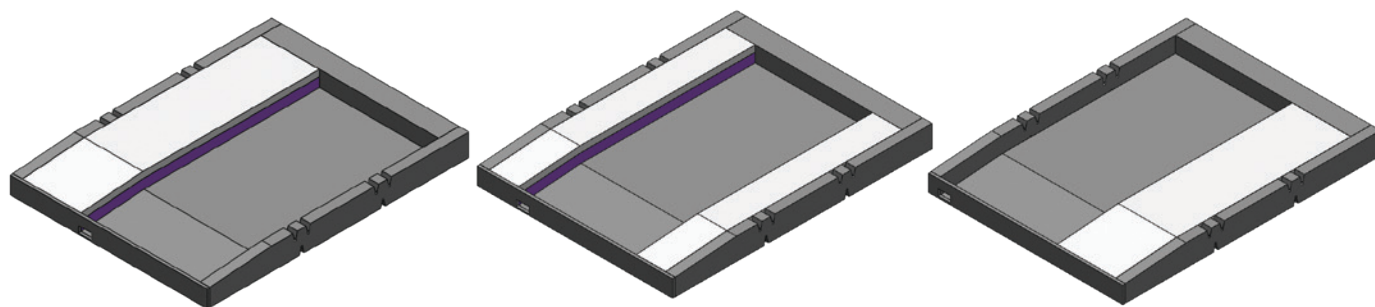


WATERFALL ZIPPER PROTECTION FLAP

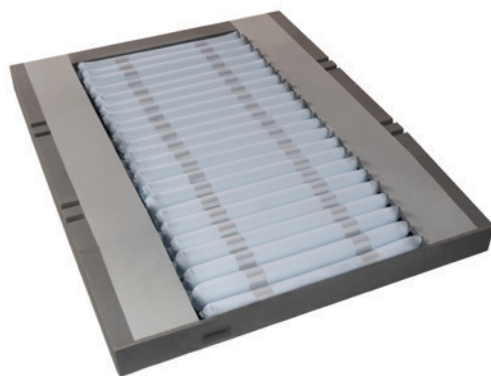
- » Protects additional protection against fluid ingress through zipper
- » Meets infection control guidelines

SPECIFICATIONS

Code	Dimensions (L x W x D mm)	Size	Product Ratings	
ZAPS1000	1980x880x215	Single	Shear & Friction	0 ———— 5
ZAPSL1000	2030x880x215	Single, Long		
ZAPKS1000	1980x1050x215	King Single	Repositioning	0 ———— 5
ZAPKSL1000	2030x1050x215	King Single, Long		
ZAPEW1000	1980x1150x215	Extra-Wide	Infection Control	0 ———— 5
ZAPEWL1000	2030x1150x215	Extra-Wide, Long		
ZAPD1000	1980x1350x215	Double	Firmness	0 ———— 5
ZAPDL1000	2030x1350x215	Double, Long		
ZAPQ1000	1980x1530x215	Queen	Moisture & Microclimate	0 ———— 5
ZAPQL1000	2030x1530x215	Queen, Long		
ZAPK1000	1980x1850x215	King	Performance & Longevity	0 ———— 5
ZAPKL1000	2030x1850x215	King, Long		
-	Customise	To suit any bed platform	Mobility & Function	0 ———— 5
Cover		Warranty		
Premiflex Ultra		5 Year Foam Core / 4 Year Cover 2 Year Air Cell & 1 Year Pump	Pressure Care Rating	HIGH - VERY HIGH RISK
Therapeutic Weight Range			Applications	
30 - 180kg			» Hospital Wards » Aged Care » Palliative Care » Homecare	



« Foam Core Diagram - Queen

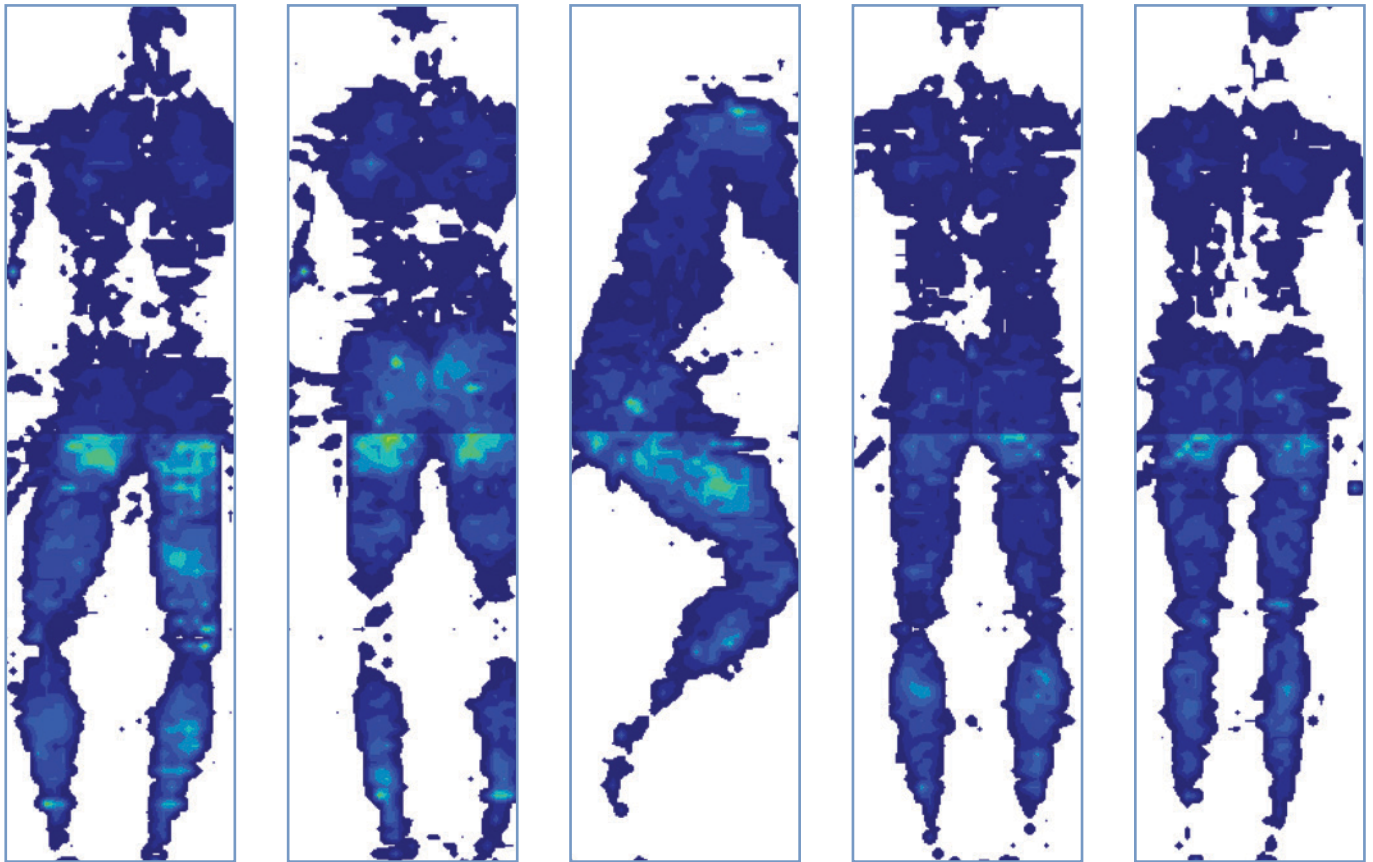


« Foam Core & Air Cells - Queen



« Premiflex Ultra Cover - Queen

CLINICAL PRESSURE MAPPING



FOWLER
Elevated Legs

FOWLER

LATERAL
RECUMBANT

SUPINE
Elevated Legs

SUPINE



TEKSCAN PRESSURE MEASUREMENT

System: 7.20C	Rows: 104	Sensel Area: 2.89008cm ²	Micro Second: 0
Sensor Type: 5400D	Cols: 34	Seconds per Frame: 0.010319	Units: mmHg

PRESSURE MAPPING PARAMETERS

Bed Surface: Icare Medical King Single	Subject: 98kg, Male	Height: 188cm
Duration: Pressure Mapping was captured after 6 hours of subject laying upon support surface		Ambient Temperature: 21°C



GLOBAL TECHNOLOGY
AUSTRALIAN MADE

All mattresses are made by
Forté Healthcare in Armidale
NSW in accordance with all
Australian manufacturing
and clinical standards.