

A black Catalina Spas hot tub is the central focus, with water jets spraying upwards. It is situated on a stone patio next to a swimming pool. In the background, a large, two-story house with a covered porch and columns is visible. The sky is filled with dramatic, golden clouds from a setting or rising sun, casting a warm glow over the scene.

The Best Seat *Out Of The House* Since 1978

**Catalina Spas™**  
*The World's Finest Spas*  
SINCE 1978

# Welcome....

When you buy a Catalina Spa, you are not buying any old hot tub, or an over used brand name, you are buying the culmination of over 40 years experience of producing the worlds finest spas.

Catalina have perfected the art of combining the healing power of warm water and massage therapy which means that Catalina can offer you some of the most advanced and beneficial Spas and Swimspas on the market.

A Catalina Spa is not only hand built in a state of the art manufacturing facility in Tennessee, each and every one is finished to the highest possible standard making it one of the most beautiful spas in the world. Incorporating contemporary designs with comfort, our spas are produced using only the finest materials.



## Did You Know?

Over the years Catalina Spas are proud to introduce a number of firsts into the industry, these include:

- Multi Point Colour Changing Lighting
- Integrated Music Systems
- Built In Televisions
- Swimspas

*Follow The Leader!*

## *The British Connection*

Catalina Spas Ltd is a family business that was established in the United Kingdom in 1997 and has been importing Catalina Spas from America ever since, making us the longest established spa importer in the UK still selling the same brand.

With over 23 years of experience in the industry we offer an unrivalled product knowledge and aftercare second to none.



*Tennessee*

## Efficiency

Making a spa as thermally efficient as possible is our priority, all of our spas come as standard with the latest Balboa control systems, utilising digital heating technology accurate temperature readings, as well as thermal insulating covers and class leading insulation.

## Massage Therapy

The massage experience is key to a quality hot tub, and no other spa is quite like a Catalina, our jet locations are expertly positioned according to the body's pressure zones and reflex areas to give you the best massage possible.

## Performance

More is not always better, the number of jets in a spa must be matched to the power available from the pumps, and every Catalina has been designed to provide optimum jet water pressure, with the added bonus of venturi air on every seat.

## Longevity

A hot tub is one of the most expensive lifestyle purchases that many people will make and it is crucial that your spa is built to last to provide years of trouble free use. A key component to longevity is our ABS Sealed Base, just like a house, a spa needs a solid foundation, and our base system provides support, insulation, and prevents ingress from moisture and rodents. Standard on Plug and Play, Premium and Aquadynamic models.

## Attention To Detail

All of our spas and swimspas are hand crafted by a skilled workforce, but then all of life's luxuries are! It's not the cheapest way of manufacturing in a modern age, but it keeps skilled workers in employment!

## Our Commitment To The Planet

We are committed to the efficiency of our products and the day to day operation of our business. We recycle all of the packaging from our spas, and what's more, we plant a tree for every spa sold.



*One Spa Sold = One Tree Planted*



*....to 42 Years of perfecting the art.*

# Plug and Play



Our plug and play range makes a fantastic first hot tub, or the ideal solution when a larger power supply isn't available. All of our plug and play models come fitted with a power lead and a 16Amp Cee form plug as standard.

## Shell Options



Sterling Silver

Tuscan Sun

Midnight Canyon

## Cabinet Options



Mocha

Coastal Grey

*Our Synthawood cabinets are designed to give the beauty of wood, with the benefit of low maintenance.*

Plug and Play spas come fitted with a 16 Amp Cee form Plug and 5 meters of cable.



## Warranty

2 Years Shell & Structure  
2 Years Equipment & Plumbing

# Avalon



<b>Dimensions</b>	1930 x 1770 x 760mm
<b>Seats</b>	5
<b>Jets</b>	12
<b>Pumps</b>	1
<b>Heater</b>	2kW
<b>Filter</b>	25 sqft
<b>Water Capacity</b>	852 Litres
<b>Dry Weight</b>	230 kg

## Features

Balboa™ Controls  
LED Underwater Light  
Synthetic Cabinet  
ABS Sealed Base

Heat Wrap Insulation  
Ozone  
Insulation Cover  
Chemical Starter Kit

# El Camino



<b>Dimensions</b>	2130 x 1670 x 860mm
<b>Seats</b>	3
<b>Jets</b>	21
<b>Pumps</b>	1
<b>Heater</b>	2kW
<b>Filter</b>	25 sqft
<b>Water Capacity</b>	889 Litres
<b>Dry Weight</b>	230 kg

## Features

Balboa™ Controls	HeatWrap Insulation
LED Underwater Light	Synthetic Cabinet
LED Perimeter Lights	Ozone
Headrests	Insulation Cover
ABS Sealed Base	Chemical Starter Kit

# Bel Air



<b>Dimensions</b>	2130 x 1830 x 810mm
<b>Seats</b>	5
<b>Jets</b>	20
<b>Pumps</b>	1
<b>Heater</b>	2kW
<b>Filter</b>	25 sqft
<b>Water Capacity</b>	1049 Litres
<b>Dry Weight</b>	310 kg

## Features

Balboa™ Controls	HeatWrap Insulation
LED Underwater Light	Synthetic Cabinet
LED Perimeter Lights	Ozone
Headrests	Insulation Cover
ABS Sealed Base	Chemical Starter Kit

# Signature



Signature spas offer outstanding value for money, packed full with features, including LED lighting, waterfalls, and **Bluetooth**® music systems\* they become the focal point of any garden. Available in a variety of different shapes and sizes to suit any installation.

## Shell Options



Sterling Silver



Tuscan Sun



Midnight Canyon

## Cabinet Options



Mocha



Coastal Grey

*Our Synthawood cabinets are designed to give the beauty of wood, with the benefit of low maintenance.*

## Warranty

5 Years Shell & Structure  
2 Years Equipment & Plumbing

\*except CS-3

# CS-3



<b>Dimensions</b>	1600 x 2030 x 810mm
<b>Seats</b>	3
<b>Jets</b>	25
<b>Pumps</b>	1
<b>Heater</b>	3kW
<b>Filter</b>	50 sqft
<b>Water Capacity</b>	760 Litres
<b>Dry Weight</b>	220 kg

## Features

Balboa™ Controls  
LED Underwater Light  
LED Perimeter Lights  
LED Fountains  
HeatWrap Insulation

Headrests  
Synthetic Cabinet  
Ozone  
Insulation Cover  
Chemical Starter Kit

# CS-4



<b>Dimensions</b>	2030 x 1780 x 860 mm
<b>Seats</b>	5
<b>Jets</b>	25
<b>Pumps</b>	1
<b>Heater</b>	3kW
<b>Filter</b>	50 sqft
<b>Water Capacity</b>	852 Litres
<b>Dry Weight</b>	280 kg

## Features

- Balboa™ Controls
- LED Underwater Light
- LED Perimeter Lights
- LED Fountain
- Bluetooth Music System
- HeatWrap Insulation
- Headrests
- Synthetic Cabinet
- Ozone
- Insulation Cover
- Chemical Starter Kit

# CS-5



<b>Dimensions</b>	2030 x 2030 x 860 mm
<b>Seats</b>	5
<b>Jets</b>	29
<b>Pumps</b>	1
<b>Heater</b>	3kW
<b>Filter</b>	50 sqft
<b>Water Capacity</b>	1,325 Litres
<b>Dry Weight</b>	330 kg

## Features

- Balboa™ Controls
- LED Underwater Light
- LED Perimeter Lights
- LED Fountain
- Bluetooth Music System
- HeatWrap Insulation
- Headrests
- Synthetic Cabinet
- Ozone
- Insulation Cover
- Chemical Starter Kit

# CS-6



<b>Dimensions</b>	2080 x 2080 x 910 mm
<b>Seats</b>	6
<b>Jets</b>	47
<b>Pumps</b>	2
<b>Heater</b>	3kW
<b>Filter</b>	50 sqft
<b>Water Capacity</b>	1,400 Litres
<b>Dry Weight</b>	380 kg

## Features

Balboa™ Controls  
LED Underwater Light  
LED Perimeter Lights  
LED Fountains  
Bluetooth Music System

Headrests  
Synthetic Cabinet  
Ozone  
Insulation Cover  
Chemical Starter Kit

# CS-7



<b>Dimensions</b>	2080 x 2080 x 910 mm
<b>Seats</b>	7
<b>Jets</b>	50
<b>Pumps</b>	2
<b>Heater</b>	3kW
<b>Filter</b>	50 sqft
<b>Water Capacity</b>	1,500 Litres
<b>Dry Weight</b>	380 kg

## Features

Balboa™ Controls  
LED Underwater Light  
LED Perimeter Lights  
LED Fountains  
Bluetooth Music System

Headrests  
Synthetic Cabinet  
Ozone  
Insulation Cover  
Chemical Starter Kit



# Premium



Premium range spas feature everything you need to create an unforgettable hot tub experience. Whether you are looking for a tranquil garden sanctuary to ease away aches and pains, or for that wow factor, the centrepiece to any garden party. Stunning designs combined with leading massage therapy, featuring our new *Edge* cabinet, which includes black cabinet corners with integrated LED lighting.

## Shell Options



Sterling Silver



Tuscan Sun



Midnight Canyon

## Cabinet Options



Mocha



Coastal Grey

*Our Synthawood cabinets are designed to give the beauty of wood, with the benefit of low maintenance.*

## Warranty

5 Years Shell & Structure  
2 Years Equipment & Plumbing

# P-300



**Dimensions** 1980 x 2130 x 860mm

**Seats** 5

**Jets** 31

**Pumps** 1

**Heater** 3kW

**Filter** 50 sqft

**Water Capacity** 1,300 Litres

**Dry Weight** 320 kg

## Features

Balboa™ Controls

LED Underwater Light

LED Perimeter Lights

LED Fountains

LED Cup Holders

Bluetooth Music System

CatalinaBlue Insulation

ABS Sealed Base

Headrests

Synthetic Cabinet

Ozone

Insulation Cover

Chemical Starter Kit

# P-400



<b>Dimensions</b>	2130 x 2130 x 910mm
<b>Seats</b>	6
<b>Jets</b>	55
<b>Pumps</b>	2
<b>Heater</b>	3kW
<b>Filter</b>	50 sqft
<b>Water Capacity</b>	1,550 Litres
<b>Dry Weight</b>	380 kg

## Features

- |                         |                      |
|-------------------------|----------------------|
| Balboa™ Controls        | ABS Sealed Base      |
| LED Underwater Light    | Headrests            |
| LED Perimeter Lights    | Synthetic Cabinet    |
| LED Fountains           | Ozone                |
| LED Cup Holders         | Insulation Cover     |
| Bluetooth Music System  | Chemical Starter Kit |
| CatalinaBlue Insulation |                      |

# P-500



<b>Dimensions</b>	2130 x 2130 x 910mm
<b>Seats</b>	7
<b>Jets</b>	52
<b>Pumps</b>	2
<b>Heater</b>	3kW
<b>Filter</b>	50 sqft
<b>Water Capacity</b>	1,650 Litres
<b>Dry Weight</b>	380 kg

## Features

- |                         |                      |
|-------------------------|----------------------|
| Balboa™ Controls        | ABS Sealed Base      |
| LED Underwater Light    | Headrests            |
| LED Perimeter Lights    | Synthetic Cabinet    |
| LED Fountains           | Ozone                |
| LED Cup Holders         | Insulation Cover     |
| Bluetooth Music System  | Chemical Starter Kit |
| CatalinaBlue Insulation |                      |

# P-600



<b>Dimensions</b>	2310 x 2310 x 910mm
<b>Seats</b>	6
<b>Jets</b>	64
<b>Pumps</b>	2
<b>Heater</b>	3kW
<b>Filter</b>	50 sqft
<b>Water Capacity</b>	1,650 Litres
<b>Dry Weight</b>	410 kg

## Features

- |                         |                      |
|-------------------------|----------------------|
| Balboa™ Controls        | ABS Sealed Base      |
| LED Underwater Light    | Headrests            |
| LED Perimeter Lights    | Synthetic Cabinet    |
| LED Fountains           | Ozone                |
| LED Cup Holders         | Insulation Cover     |
| Bluetooth Music System  | Chemical Starter Kit |
| CatalinaBlue Insulation |                      |

# P-700



<b>Dimensions</b>	2310 x 2310 x 910mm
<b>Seats</b>	7
<b>Jets</b>	57
<b>Pumps</b>	2
<b>Heater</b>	3kW
<b>Filter</b>	50 sqft
<b>Water Capacity</b>	1,720 Litres
<b>Dry Weight</b>	410 kg

## Features

- |                         |                      |
|-------------------------|----------------------|
| Balboa™ Controls        | ABS Sealed Base      |
| LED Underwater Light    | Headrests            |
| LED Perimeter Lights    | Synthetic Cabinet    |
| LED Fountains           | Ozone                |
| LED Cup Holders         | Insulation Cover     |
| Bluetooth Music System  | Chemical Starter Kit |
| CatalinaBlue Insulation |                      |

# Aquadynamic



The Aquadynamic range is the flagship of the Catalina Spas line up. The height of Luxury, each spa is packed with unique features including; LED Crystal Spheres, Tiled Mosaic accents, LED Jets and epitomises the essence of Catalina.

## Shell Options



Sterling Silver



Tuscan Sun



Midnight Canyon

## Cabinet Options



Chestnut



Driftwood



Graphite

*Our Synthawood cabinets are designed to give the beauty of wood, with the benefit of low maintenance.*

## Warranty

Catalina Aquadynamic include a 10 Year Warranty on all major components including; shell, structure, plumbing and electrical equipment.



# Nebula



**Dimensions** 2030 x 2030 x 970mm

**Seats** 5

**Jets** 37

**Pumps** 1 + circ pump

**Heater** 3kW

**Filter** 100 sqft

**Water Capacity** 1,400 Litres

**Dry Weight** 360 kg

## Features

Balboa™ Controls

LED Underwater Light

LED Jets

LED Crystal Spheres

LED Fountains

LED Cup Holders

Bluetooth Music System

ABS Sealed Base

LED Headrests

Synthetic Cabinet

Ozone

Insulation Cover

Chemical Starter Kit

# Aurora



<b>Dimensions</b>	2130 x 2130 x 970mm
<b>Seats</b>	6
<b>Jets</b>	50
<b>Pumps</b>	2 + circ pump
<b>Heater</b>	3kW
<b>Filter</b>	100 sqft
<b>Water Capacity</b>	1,600 Litres
<b>Dry Weight</b>	440 kg

## Features

Balboa™ Controls	ABS Sealed Base
LED Underwater Light	LED Headrests
LED Jets	Synthetic Cabinet
LED Crystal Spheres	Ozone
LED Fountains	Insulation Cover
LED Cup Holders	Chemical Starter Kit
Bluetooth Music System	

# Lunar



<b>Dimensions</b>	2130 x 2130 x 970mm
<b>Seats</b>	7
<b>Jets</b>	47
<b>Pumps</b>	2
<b>Heater</b>	3kW
<b>Filter</b>	100 sqft
<b>Water Capacity</b>	1,600 Litres
<b>Dry Weight</b>	440 kg

## Features

Balboa™ Controls	ABS Sealed Base
LED Underwater Light	LED Headrests
LED Jets	Synthetic Cabinet
LED Crystal Spheres	Ozone
LED Fountains	Insulation Cover
LED Cup Holders	Chemical Starter Kit
Bluetooth Music System	

# Constellation



<b>Dimensions</b>	2340 x 2340 x 970mm
<b>Seats</b>	6
<b>Jets</b>	60
<b>Pumps</b>	2 + Circulation Pump
<b>Filter</b>	100 sqft
<b>Heater</b>	3kW
<b>Water Capacity</b>	1,700 Litres
<b>Dry Weight</b>	480 kg

## Features

Balboa™ Controls	ABS Sealed Base
LED Underwater Light	LED Headrests
LED Jets	Synthetic Cabinet
LED Crystal Spheres	Ozone
LED Fountains	Insulation Cover
LED Cup Holders	Chemical Starter Kit
Bluetooth Music System	

# Comet



<b>Dimensions</b>	2340 x 2340 x 970mm
<b>Seats</b>	7
<b>Jets</b>	57
<b>Pumps</b>	2 + Circulation Pump
<b>Filter</b>	100 sqft
<b>Heater</b>	3kW
<b>Water Capacity</b>	1,700 Litres
<b>Dry Weight</b>	480 kg

## Features

Balboa™ Controls	ABS Sealed Base
LED Underwater Light	LED Headrests
LED Jets	Synthetic Cabinet
LED Crystal Spheres	Ozone
LED Fountains	Insulation Cover
LED Cup Holders	Chemical Starter Kit
Bluetooth Music System	

# Features

## HeatWrap Insulation

Our tried and tested Heat wrap is used in conjunction with a layer of foam insulation applied to the back of the spa shell. This forms a perimeter of insulation between the cabinet and support frame of your spa, preventing heat migration through the frame. Standard on Plug and play, and Signature models.

## CatalinaBlue Insulation

Our CatalinaBlue Insulation is made from recycled blue jeans and has excellent insulation properties. All spas fitted with CatalinaBlue also include our HeatWrap insulation (see above) as an additional layer of insulation, resulting in some of the most energy efficient spas available. Standard on Premium and Aquadynamic models.

## Bluetooth Music System

A built in Bluetooth music system gives you the ability to stream music direct to your hot tub, crystal clear sound is delivered through 2 marine grade shell speakers and a subwoofer fitted inside the cabinet delivers punchy bass tones.

## Heavy Duty Timber Frame

The benefits of a timber support frame have been accepted for over 40 years in hot tub manufacturing. Just like the roof trusses and floor joints in a house, sometimes timber is just the best option. Our heavy duty frame uses 2" x 4" pressure treated timber, a wooden frame also helps with the insulation of your hot tub as it doesn't conduct heat out to the cabinet of your spa!

## ABS Moulded Base

The foundation of our hot tubs, a moulded ABS base, provides additional support under the shell of our spas, as well as sealing heat inside the it, while keeping moisture and pests outside. Standard on Plug and Play, Premium and Aquadynamic models.

# Accessories

To compliment your hot tub installation we offer a range of helpful accessories, designed to make hot tub ownership a stress free experience. These include steps, hand rails and cover lifters, as well as lifestyle accessories and heating options to reduce running costs. Full information and prices on our accessories can be found in our price list.

- Steps
- Cover Lifters
- Chemical Dosing
- Heat Exchangers
- Heat Pumps



*Bluetooth Music System*



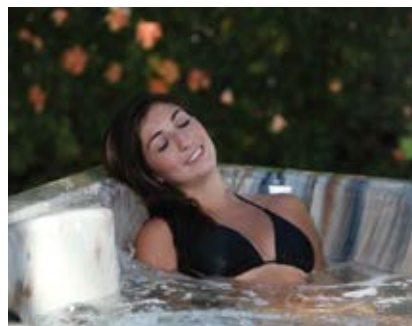
*ABS sealed base*

# Model Comparison

	Avalon	El Carmino	Bel Air	CS-3	CS-4	CS-5	CS-6	CS-7	P300	P400	P500	P600	P700	Nebula	Aurora	Lunar	Constellation	Comet
Pumps	1	1	1	1	1	1	2	2	1	2	2	2	2	1	2	2	2	2
Circ Pump	-	-	-	-	-	-	-	-	-	-	-	-	-	✓	✓	✓	✓	✓
Seats	5	3	5	3	5	5	6	7	5	6	7	6	7	5	6	7	6	7
Jets	12	21	20	25	25	29	47	50	31	55	52	64	57	37	50	47	60	57
Power	13	13	13	20	20	20	32	32	20	32	32	32	32	20	32	32	32	32
Ozone Generator	✓	✓	✓	✓	✓	✓	✓	✓	✓	✓	✓	✓	✓	✓	✓	✓	✓	✓
ABS Moulded Base	✓	✓	✓	-	-	-	-	-	✓	✓	✓	✓	✓	✓	✓	✓	✓	✓
HeatWrap	✓	✓	✓	✓	✓	✓	✓	✓	✓	✓	✓	✓	✓	✓	✓	✓	✓	✓
Catalina Blue	-	-	-	-	-	-	-	-	✓	✓	✓	✓	✓	✓	✓	✓	✓	✓
Bluetooth Music System	-	-	-	-	✓	✓	✓	✓	✓	✓	✓	✓	✓	✓	✓	✓	✓	✓
LED Cabinet Lights	-	-	-	-	-	-	-	-	✓	✓	✓	✓	✓	✓	✓	✓	✓	✓
LED Underwater Light	✓	✓	✓	✓	✓	✓	✓	✓	✓	✓	✓	✓	✓	✓	✓	✓	✓	✓
LED Perimeter Lights	-	✓	✓	✓	✓	✓	✓	✓	✓	✓	✓	✓	✓	✓	✓	✓	✓	✓
LED Water Features	-	-	-	✓	✓	✓	✓	✓	✓	✓	✓	✓	✓	✓	✓	✓	✓	✓
LED Cup Holders	-	-	-	-	-	-	-	-	✓	✓	✓	✓	✓	✓	✓	✓	✓	✓
Wifi App	-	-	-	-	-	-	-	-	Opt	Opt	Opt	Opt	Opt	Opt	Opt	Opt	Opt	Opt

We also have a selection of other products available including:

- Swimspas
- Heat Pumps
- BBQ Huts
- Auto Dosing
- Saunas
- Camping Pods



**Aqua Design and Leisure**  
Downs Farm, Gomeldon, Salisbury, SP4 6JZ

[www.aquadesignandleisure.com](http://www.aquadesignandleisure.com)  
[sales@aquadesignandleisure.com](mailto:sales@aquadesignandleisure.com)

01980 611555 • 0800 731 4601

Aqua Design and Leisure is a trading name of Catalina Spas Ltd.  
Specifications subject to change without notice.  
E&OE. Terms and Conditions apply.