

# THE HEN HOUSE

PACKING & TRAVEL GUIDE



# CONGRATULATIONS ON PURCHASING THE WORLD'S GREATEST BICYCLE TRAVEL CASE, THE HEN HOUSE BY RÜSTER SPORTS.

This booklet contains travel tips and packing instructions for the Rüster Sports Hen House.

Thank you for your purchase. If you have any questions please connect with us on Facebook, Twitter or email.

Cheers!

*TJ Tollakson*  
Founder and CEO



## THINGS TO KNOW:



### **62 LINEAR INCHES=NO EXCESS OR OVERSIZE BAGGAGE FEES.**

The Hen House is the only bicycle travel case to meet the airlines standard of 62 linear inches to avoid excess and oversize baggage fees, which means you can save thousands of dollars simply by traveling with your bicycle in the Hen House.



### **STEP-BY-STEP VIDEO PACKING INSTRUCTIONS ARE AVAILABLE 24/7.**

We're here for you.

**[www.rustersports.com/videoinstructions](http://www.rustersports.com/videoinstructions)**



### **CASE ACCOMMODATES ROAD, MOUNTAIN, CX, AND TRI BIKES.**

The Hen House is made of 1000 denier ballistic nylon and is built to withstand even the toughest conditions, protecting most any bike.



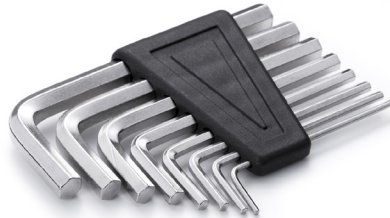
### **EASILY FITS IN MOST VEHICLES AND CAN STORE UNOBTRUSIVELY IN MOST HOTEL ROOMS.**

The Hen House fits in most standard vehicles and collapses down for storage under hotel room beds or inside the closet.

# GETTING STARTED

## BOX CONTENTS/PARTS LIST:

**MAIN FRAME BAG**  
**WHEEL BAG**  
**10 VELCRO STRAPS**  
**PIPE INSULATION**  
**2 SHOULDER STRAPS** - NOT INCLUDED WITH THE ARMORED HEN HOUSE  
**DERAILLEUR BAG**  
**AXLE/SKEWER**  
**3 FRAME BAG INSERTS**  
**WHEEL BAG INSERT**



## TOOLS NEEDED:

**SET OF ALLEN KEYS**  
**(TYPICALLY 3,4,5,6,8MM)**

**SCISSORS OR BOX KNIFE**

**TORQUE WRENCH**  
**(RECOMMENDED FOR ASSEMBLY PRIOR TO RACE)**

**GREASE FOR RE-LUBING THE BOLTS WHEN ASSEMBLING**

**FOR ADDITIONAL ASSISTANCE, VISIT [RUSTERSPORTS.COM](http://RUSTERSPORTS.COM) FOR AN INSTRUCTIONAL VIDEO AND STEP-BY-STEP PHOTO INSTRUCTION**



# STEP-BY-STEP GUIDE FOR PACKING YOUR HEN HOUSE

1. Remove seat post
2. Remove pedals
3. Remove front wheel
4. Remove front brake from fork
5. Remove stem face plate
6. Remove headset cap
7. Remove stem

You may need to loosen front brake cable

8. Remove fork, (place bearings and headset cap back on fork)

*Please see #8.5 on Figure 1 for forks **with** an integrated headset. You must remove both the top and bottom bearing with the fork. It is important that the orientation of these bearings are kept the same as originally installed.*

9. Remove rear wheel

Do this by shifting onto the smallest chainring in front and back.

10. Remove rear derailleur and place derailleur in bag provided

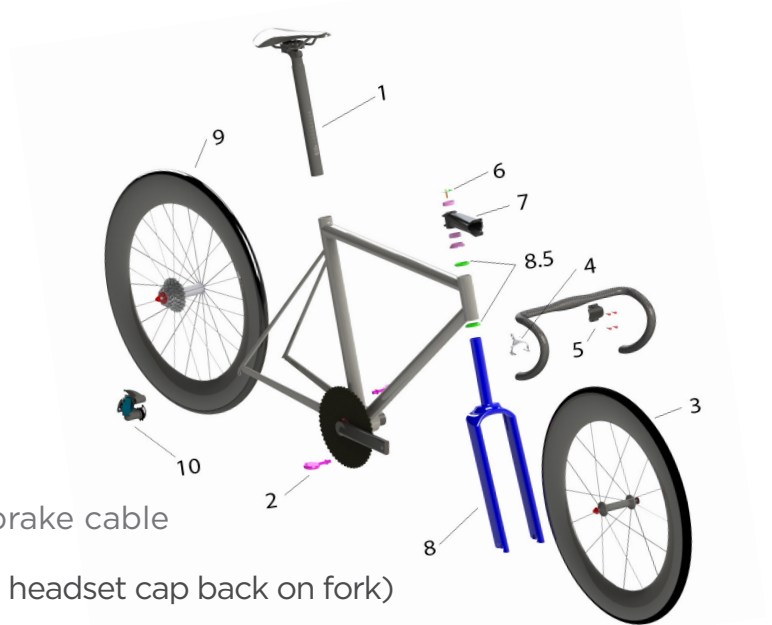


Figure 1.

11. Lay bike on side (drive side up)
12. Insert axle/skewer into rear drops
13. Wrap pipe insulation around entire frame
  - Cut pipe insulation into pieces to fit around all tubes
  - Slide pipe insulation over the fork legs
  - Label the pieces of foam so you know which piece correlates with each part on the frame
14. Attach derailleur bag to frame with attached buckle
15. Use velcro straps to secure bike
  - Velcro left crank arm to left chainstay
  - Velcro fork to the base of the frame
  - Velcro handlebars to inside of frame
  - Velcro down all pipe insulation

\*\*\*If one strap is two short, attach two straps together\*\*\*

**Step-By-Step Guide Continues on the next page.**

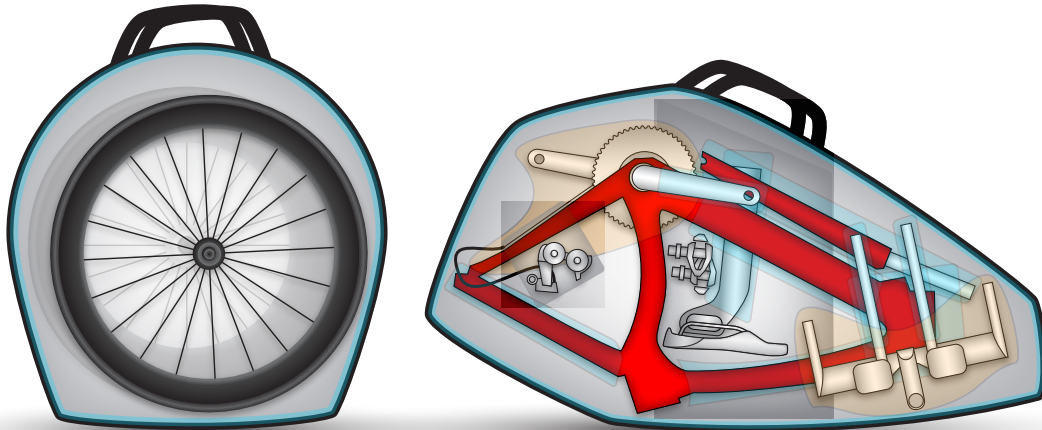


## Step-By-Step Guide Continued.

16. Load bike into case with top tube down, crank up

- Chain ring should be away from the logo side of bag

17. Store seat post, pedals, and any additional items in the interior pockets of frame and wheel bag



Packing complete.

### **If you are traveling with a disc wheel it is recommended that:**

- You use cardboard discs to protect the disc wheel  
*Each cardboard disc should be roughly the same diameter as the wheel, with a hole cut in the center for the hub*
- You install wheel shipping blocks on each side of the hub
- You use the manufacturer's setting on torque
- When reassembling, be careful not to damage carbon on the stem, faceplate, handlebars, etc.

# TIPS FOR FLYING WITH YOUR BIKE IN THE HEN HOUSE

**American Airlines and Southwest** both have policies that allow you to travel with your bike in the Hen House with no additional excess luggage fees.

Other airlines have more ambiguous policies so here are some tips to help make sure you never pay excess luggage fees:

1. **Never say the bag contains a “Bike” or “Bicycle”**, some airline gate agents hear the word “bike” and automatically want to charge excess luggage fees regardless of the size or weight of the case.
2. **Some terms I like to use** when asked **“What is inside the case?”**:
  - **Ergometer** – a scientific device for measuring torque (ie. Power Meter)
  - **Exercise Equipment**
  - **The frame of a bicycle or just a carbon frame**
3. **Use the additional space for your gear.** Since the Hen House is a two bag system, I suggest you pack both the wheel bag and frame bag with most of your gear and toiletries. Pack an additional carry-on bag like a roller-board to carry any additional luggage. You will check two bags at a minimum, one frame bag and one wheel bag.



**Disclaimer:**

Rüster Sports is not responsible for damage caused to equipment. These are packing suggestions and methods that have proven to be effective for normal travel conditions. It is the end users responsibility to adequately pack equipment in the bag. Rüster Sports cannot guarantee you will not pay excess luggage fees with this bag. The frame bag is roughly a parallelogram that measures 30" on the ground, 24" high, and 8" wide = 62 linear inches.

**Warranty:**

All bicycle cases manufactured by Rüster Sports are warranted against defects in material and workmanship for the lifetime of the original owner within North America, and for a period of ten (10) years from the date of shipment to a location outside of North America. Defects in Rüster Sports' products will be determined solely by Rüster Sports, LLC and not by any representative, distributor, dealer of, or for the company. If you believe any Rüster Sports bicycle travel case you have purchased has a defect in material or workmanship or has failed during normal use within the warranty period, please contact [info@rustersports.com](mailto:info@rustersports.com) for assistance. If product repair or replacement is necessary, the Customer will be solely responsible for all shipping charges, freight, insurance and proper packaging to prevent breakage in transit, whether or not the product is covered by this warranty. **The luggage wheel assembly is not protected by a lifetime warranty. Damage to luggage wheels can be repaired for an additional cost.**

**Limitations:**

Rüster Sports will NOT warrant defects resulting from any Customer actions, such as mishandling, improper use, operation outside of design limits, misapplication, improper repair, or unauthorized modification. No other warranties are expressed or implied. Rüster Sports specifically disclaims any implied warranties of merchantability or fitness for a specific purpose. Rüster Sports' liability shall be limited to product repair or replacement of any defective unit or units of equipment to which a claim is made, and shall in no event include the Customer's manufacturing costs, lost profits or goodwill, or any other direct, indirect, special, incidental or consequential damages whether based on contract, tort or other legal theory. Rüster Sports shall not be liable for normal manufacturing defects or customary variances from specifications not affecting the normal use of the product.

**Return Policy:**

Purchases from inventory may be returned within 15 days of the date of purchase in their original package and in new condition. All returns require prior authorization and must include a return authorization (RA) number on the package. Special order items are final sales and cannot be returned or exchanged. We reserve the right to not accept a return. All returns require a minimum payment of outbound and return shipping charges as well as a 15% restocking fee. Returns lost in return shipping will not be refunded.

**Connect with us on:**

[Facebook.com/rustersports](https://www.facebook.com/rustersports)

[Twitter.com/@rustersports](https://twitter.com/rustersports)

[Youtube.com/rustersports](https://www.youtube.com/rustersports)

Des Moines, IA 50309

515-343-7143

[www.rustersports.com](http://www.rustersports.com)

