

joyami



joyami Smart Rice Cooker L1 Operation Manual

Please read this instruction carefully before starting the product,
and save it for future use.

Important Safeguards

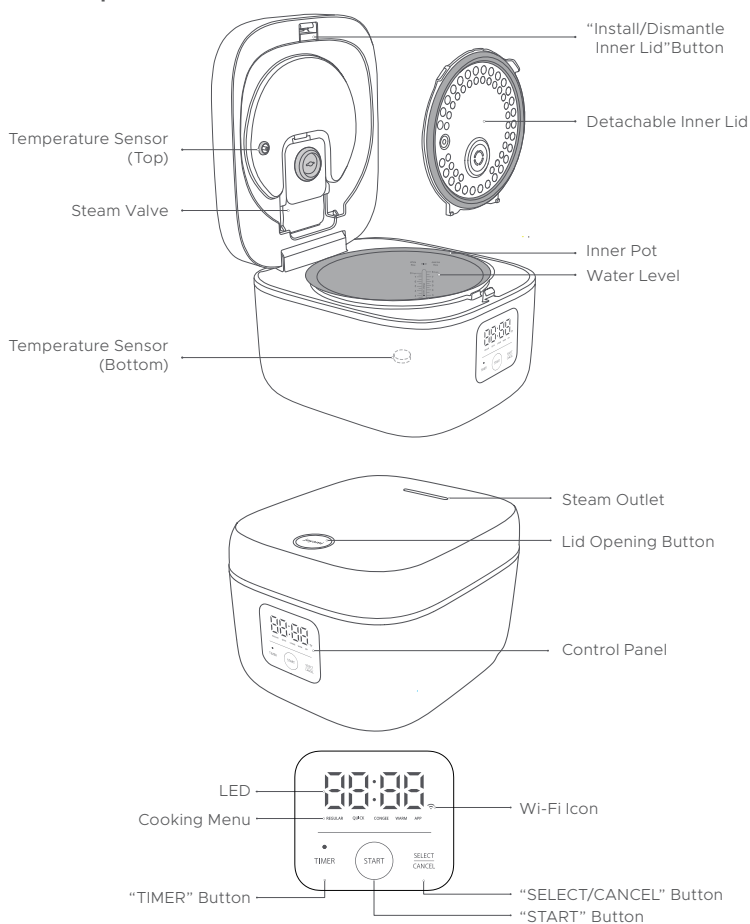
Service Restrictions	<ul style="list-style-type: none">· The normal working altitude of the product ranges from 0 m to 2,000 m.· The product should not be placed in an unbalanced or humid place or one close to a fire or heat source (such as a stove), but preferably at a distance of more than 30cm from them.· Do not use any non-specific or deformed inner pot to avoid burns or injuries due to overheating.· This appliances is not intended for use by persons (including children) with reduced physical, sensory or mental capabilities or lack of experience and knowledge, unless they have been given supervision or instruction concerning use of the appliance by a person responsible for their safety. Children should be supervised to ensure that they do not play with the appliance.
Cleaning and Maintenance	<ul style="list-style-type: none">· Do not immerse any part of the rice cooker in water or spray water on any part of the rice cooker .· Do not use steel wool or other hard items to clean or scrub the inner pot.· Use soft cloth to clean the product.
AC Power Cord	<ul style="list-style-type: none">· Only use the supporting AC power cord.· Disconnect the AC power cord from the AC power socket before maintenance or moving.· If the power cord is damaged, replace it with specific power cord or original one purchased from the manufacturer or maintenance department.· Do not over-pinch, bend, or twist the AC power cord, or its core may be exposed or broken.· Do not use the supplied AC power cord on any other device.
Precautions on Electric Power	<ul style="list-style-type: none">· It is prohibited to adopt power supplies other than 220V-240V, to avoid electric shock or fire disaster.· Be sure to disconnect the power cord by holding the plug firmly with your hand to avoid electric shock or fire caused by short circuit.· Do not pull the AC power cord excessively to avoid electric shock or fire caused by short circuit.· Do not allow children to operate the rice cooker alone. Keep it out of reach of infants and young children to avoid the occurrence of electric shock, scald, and other accidents.· Do not insert or pull out the power plug with wet hands to avoid electric shock or injury.· Use an independent power socket with its ground wire and at a rated current above 10A to avoid fire hazard and other accidents.
Environment	<ul style="list-style-type: none">· Steam and heat will cause damage, discoloration and deformation to walls and furniture, so please keep the rice cooker more than 30cm away from walls and furniture during use.· When operating the rice cooker in a kitchen cabinet or other similar places, please ensure s sufficient ventilation.
In Use	<ul style="list-style-type: none">· Do not heat the inner pot on any other heat sources such as induction cooker and gas stove.· Do not insert anything into the steam outlet or gap to avoid electric shock or injury.· Do not touch the inner pot during use or immediately after use of the rice cooker, to avoid scald due to high temperature.· Do not be close to the steam outlet during use or immediately after use of the cooker.· Do not move or shake the rice cooker while it is cooking.· Do not use this rice cooker for food materials which may cause blockage of the steam outlet, such as seaweed and kelp.· Do not cover the top of the rice cooker with other items, to avoid steam against from releasing.· Cooked rice may have bad smell if the temperature holding time exceeds 24h.· Do not add ingredients to the pot beyond the water level to avoid leakage of liquid to the connector.
After Use	<ul style="list-style-type: none">· Be sure to power off and disconnect the power plug when the rice cooker is not used.· Be sure to check the steam discharge pipe regularly to ensure that it is not clogged.· If the rice cooker is abnormal or there is a fault, stop using it immediately and disconnect the power plug. Open the lid and take out the inner pot until the rice cooker cools sufficiently.
Other Precautions	<ul style="list-style-type: none">· Please do not drop the product or bump it against hard objects, to avoid injury or faults.· Do not use the product when the structure of its inner lid is damaged, to avoid scald or injury caused by leaked steam or boiling liquid.· Do not modify the product. Non-maintenance technicians shall not disassemble or repair the product to avoid fire, electric shock, or injury.· If the product is abnormal or there is a fault, stop using it immediately to avoid fire, electric shock or injury.· Do not operate the product through an external controller or an independent remote control system.· The silicone parts on the product should avoid contact with alcoholic beverages containing more than 50% ethanol.
Abnormality or Fault	<ul style="list-style-type: none">· Abnormal heating of the power cord or power plug in use.· Smoke and a burning smell come out of the rice cooker.· Part of the rice cooker cracks, looses or there is an abnormal noise.· The inner pot is deformed.· Other faults and abnormalities.

Thank you for purchasing and using joyami Smart Rice Cooker L1.

joyami Smart Rice Cooker L1 is for home use ONLY.

The illustrations of product, components and user interface herein are all schematic diagrams for reference only. Due to possible upgrades of the product, there may be differences between the actual product and the schematic diagram included herein.

Product Description



The illustrations of product, components and user interface are all schematic diagrams for reference only. Due to possible upgrades of the product, there may be differences between the actual product and the schematic diagram included herein.

Accessories



Congee Scoop ×1



Rice Scoop ×1



Measuring Cup×1



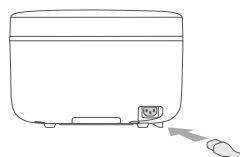
Power Cord×1

Start to Use

Start joyami Smart Rice Cooker L1 after the power cord is connected.

Connect Power Cord

Connect one end of the power cord to the power socket at the bottom of the main body, and then the power plug to the AC power socket.



Connect with Mijia App

This product works with Mijia app. Control your device, and interact it and other smart home devices with Mijia app.

Scan the QR code to download and install the app. You will be directed to the connection setup page if the app is installed already. Or search "Mijia" in the app Store to download and install it.

Open Mijia app, tap "+" on the upper right, and then follow prompts to add your device.

Note: The version of Mijia app might have been updated, please follow the instructions based on the current app version.



Connect to Wi-Fi

The Wi-Fi icon blinks when joyami Smart Rice Cooker L1 is powered on for the first time. Search joyami Smart Rice Cooker L1 with Mijia APP and then you may link it cooker to the APP. After connection, the Wi-Fi icon is on constantly and goes off when the screen turns off.



Reset Wi-Fi

Simultaneously press down the button "TIMER" and "SELECT/CANCEL" for 3 seconds and then reset Wi-Fi. The screen displays a marquee tool for resetting Wi-Fi settings. After a successful reset, the Wi-Fi icon blinks on the screen and joyami Smart Rice Cooker L1 becomes ready for connection.



Start to Cook Rice

1. Open the lid

Press down the lid opening button.

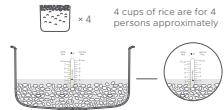
Note 1: To take out the inner pot, gently push the lid to open it fully. Avoid touching the inner lid when taking out the inner pot.

Note 2: Before starting the product for the first time, boil water 2 to 3 times with the mode "QUICK", 40min each time.



2. Put in rice and water

Put in 4 cups of Jasmine Rice and add water to the water level "4", for example. When adding water, do not exceed the corresponding water level; otherwise, overflow, short circuit or other fault may be caused.



3. Set the menu

After powering on joyami Smart Rice Cooker L1, press down the button "SELECT/CANCEL" and select a mode from "REGULAR", "QUICK", "CONGEE", and etc. joyami Smart Rice Cooker L1 will cook automatically for 60min when REGULAR is selected or 40min when QUICK.



4. Start to cook rice

Press down the "START" button to enter the state of cooking rice.

Warning: "REGULAR" and "QUICK" are applicable to rice ONLY. It may cause burns and damage product performance to use them for cooking other raw materials.



Operating Guide

Switch the menu

Press down the "SELECT/CANCEL" button and select a mode you intend to use. Every time you press down the button, the menu is switched in the order of "REGULAR", "QUICK", "CONGEE", "WARM" and "APP".



1. REGULAR

After joyami Smart Rice Cooker L1 is powered on, its default mode is "REGULAR", and the cooking time for this mode is automatically adjusted according to the programs for different cups of rice (it is expected to be about 1h).



2. QUICK

Its cooking time is automatically adjusted according to the programs for different amounts of rice (it is expected to be about 40min).



3. CONGEE

The default cooking time is 1.5h for this mode.

Note: The cooking time, ranging from 40min to 4h, may be adjusted through Mijia APP.



4. WARM

After the cooking is completed, joyami Smart Rice Cooker L1 automatically enters the mode "WARM" automatically, to maintain the temperature at about 73C. Or the mode "WARM" may be selected manually.

Note 1: Please limit the holding time within 12h. In case of more than 24h, the mode "WARM" is automatically canceled and enters the standby status;

Note 2: You may set whether to hold the temperature through Mijia APP after the cooking is completed;

Note 3: joyami Smart Rice Cooker L1 does not automatically enter the mode "WARM" for some modes selected in Mijia APP that are not suitable for holding the temperature (such as Baking Cake).



5. APP

Mijia APP recommends various cooking modes, and you may select one of them as a custom function for cooking through Mijia APP.

Note 1: The default function of APP is stewing.

Note 2: Mijia APP provides options for cooking functions such as Baking Cake.



6. TIMER

1) After selecting the cooking mode "REGULAR", for example, press down the button "TIMER" to set the reservation time for completing the cooking. For instance, if the meal is expected to be served in 2 hours, you need to set the reservation time to 02:00.

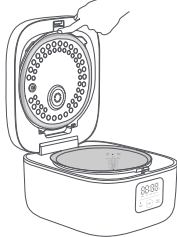
Note: A reservation is set successfully only when the time from now to the reserved time of completion is longer than the cooking cycle of the selected mode. Otherwise, joyami Smart Rice Cooker L1 will start cooking immediately.



2) The initial reservation interface displays the cooking time required by the selected mode. Every time you press down the button "TIMER", the reservation time extends by 15min. Press down the button "START" to start the reserved cooking.

Maintenance

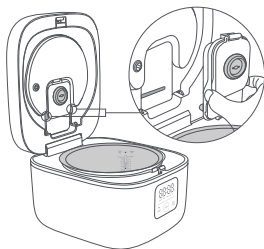
1. Dismantle the inner lid



A. Push upwards the inner lid latch until the inner lid pops out automatically.

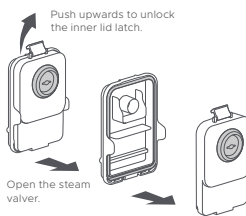


B. Hold the inner lid with hands and remove it.



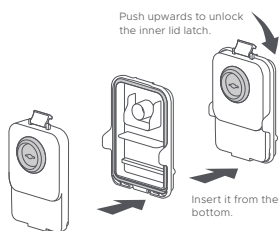
C. After removing the inner lid, the steam valve can be seen. Hold two sides of the steam valve with one hand and pull it out to one side by translation.

Note: Wash the inner lid and steam valve after use.

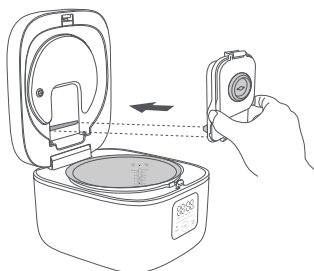


D. Unlock the upper latch of the steam valve to open it and then take out the sealing strip from the steam valve.

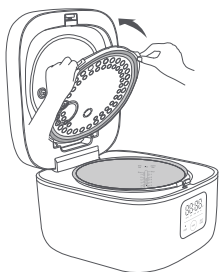
2. Install the inner lid



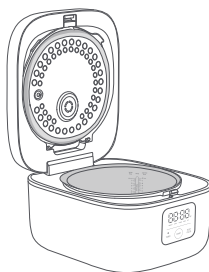
A. Insert the sealing strip into the slot on the lower cover of the steam valve, and press the upper latch into the buckle after the bottom of the inner lid is aligned.



B. Align the steam valve port with the installation position of the steam outlet and then press it slowly.



C. Insert the inner lid support ring into the slot, and then slowly press inwards the inner lid along its bottom as the axis.



D. Fasten the inner lid with the upper latch.

Note: The steam valve and inner lid must be installed; otherwise, the lid cannot be closed.

Troubleshooting

Fault	Cause & Solution
The upper lid can't be closed.	Check whether the inner lid is installed.
Button doesn't work.	Check whether the cooker is in the mode cooking, "TIMER" or "WARM", and press down the button "SELECT/CANCEL" to exit if yes.
Steam leaks.	Check whether any rubber sealing part ages or is deformed or damaged.
Rice is half cooked (not fully cooked).	Check whether the rice-to-water ratio matches with the water line indicated. (Water is insufficient.)
	Check whether the production date of rice exceeds 6 months.
	Check whether there is foreign body on the contacting surface between the bottom of the inner pot and the top of the sensor.
	Check whether the surface of the aluminum cover for the pot bottom sensor is deformed.
Overflows during cooking.	Check whether the bottom of the inner pot is deformed.
	Check whether the rice-to-water ratio matches with the water line indicated. (Water is excessive.)
	Check whether there is foreign body on the contacting surface between the bottom of the inner pot and the top of the sensor.
	Check whether the surface of the aluminum cover for the pot bottom sensor is deformed.
Cooked rice is in lump.	Check whether the bottom of the inner pot is deformed.
	Check whether the rice-to-water ratio matches with the water line indicated. (Water is excessive.)
	Check whether the temperature holding time exceeds 12h.
There is bad smell during cooking.	Check whether there is food or water left on the inner lid from last cooking.
	Check whether there is bad smell from the sealing ring of the inner lid.
	Before starting the product for the first time, boil water 2 to 3 times with the mode "REGULAR", 40min each time, to reduce bad smell effectively.
The bottom of cooked rice is brown.	Ensure that rice is cleaned properly before cooking.
	Check whether there is foreign body on the contacting surface between the bottom of the inner pot and the top of the sensor.
	Check whether the surface of the aluminum cover for the pot bottom sensor is deformed.
	Check whether the bottom of the inner pot is deformed.
Cooked rice becomes hard or there is bad smell during "WARM".	Check whether the temperature holding time exceeds 12h.
	Check whether there is foreign body on the contacting surface between the bottom of the inner pot and the top of the sensor.
	Check whether the surface of the aluminum cover for the pot bottom sensor is deformed.
	Check whether the bottom of the inner pot is deformed.
"TIMER" doesn't work as required.	Check whether the time from now to the reserved time of completion is shorter than the cooking cycle of the mode selected;
	Check whether the button "START" is not pressed down after the reservation time is set.
	Check whether Wi-Fi linkage is normal when reservation is set on mobile phone.
Wi-Fi linkage fails.	Check whether the version of APP is the latest version.
	Check whether the Wi-Fi intensity is strong enough.
Firmware can't be upgraded.	Check whether the rice cooker is in the cooking process.
	Check whether Wi-Fi connection is normal.

Fault Code

Code	Description	Remark
E-09	The top sensor is damaged	Please contact the specific after-sales service for repair
E-10	The bottom sensor is damaged	Please contact the specific after-sales service for repair
E-11	Communication fault	Please contact the specific after-sales service for repair

Basic Parameter

Product Name	Rice Cooker	Product Model	JFB02M
Heating Way	Electric Heating Plate	Material of Inner Pot	Aluminium Alloy
Rated Voltage	220-240V~	Rated Power	890-1060W
Rated Frequency	50-60Hz	Capacity	1.6L
Dimensions	328×222×281mm		

After-sale Service

Please visit the official website at joyami.tokitglobal.com, if you need after-sales service, operation manual or other information, or encounter any problem.

joyami



joyami 智能电饭煲L1使用说明书

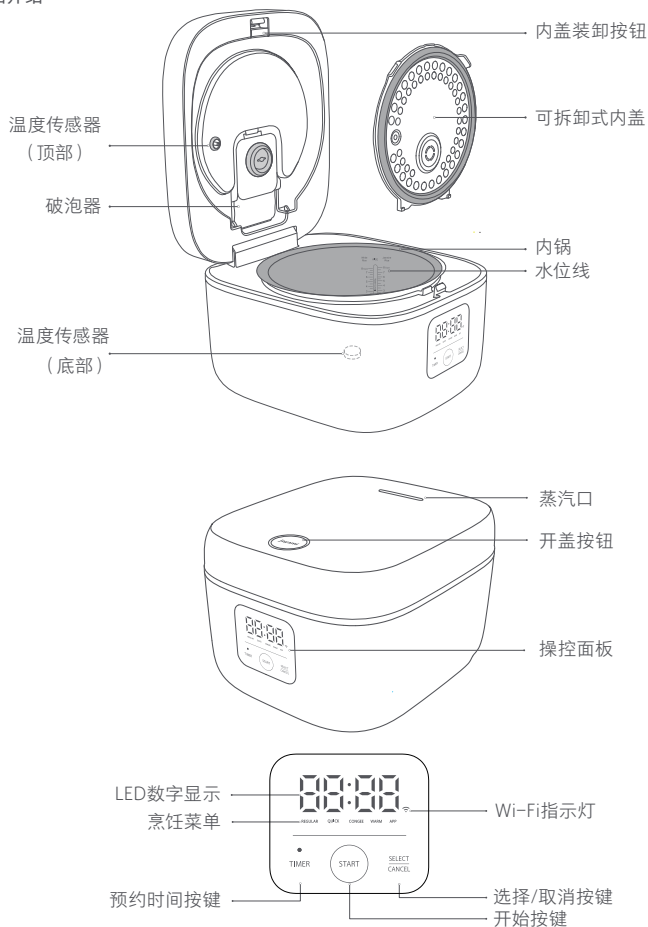
使用产品前请仔细阅读本说明书，并妥善保管

注意事项

- 使用限制**
- 产品正常工作海拔范围高度为0米~2000米。
 - 产品不应放在不平衡、潮湿或者靠近其他火源、热源（如炉具）的地方，距离最好是30cm以上。
 - 请勿使用非专用内锅或变形后的内锅，以免因过热导致烫伤或受伤。
 - 本设备不适合身体、感官或精神能力有缺陷或缺乏经验和知识的人（包括儿童）使用，除非负责他们安全的人员对他们进行有关使用设备的监督或指导。应监督儿童以确保他们不会玩耍本产品。
- 清洁保养时**
- 器具不得浸入水中或淋水。
 - 请勿使用钢丝球等硬质物品清洗或擦洗内锅。
 - 请使用软布进行清洗。
- 交流电源线**
- 请仅使用配套提供的交流电源线。
 - 在进行维护作业或移动之前，请从交流电源插座上断开交流电源线的连接。
 - 如果电源软线损坏，必须用专用软线或从其制造商或维修部买到的专用组件来更换。
 - 请勿过度拧捏、弯曲或扭转交流电源线，否则线芯可能会暴露在外或折断。
 - 请勿在任何其他装置上使用所提供的交流电源线。
- 电源注意事项**
- 本产品禁止用于220V-240V以外的电源，以免造成火宅触电。
 - 断开交流电源线连接时，务必手持电源插头部分拔下电源。请勿拉扯交流电源线，以免造成触电或短路起火。
 - 请勿让儿童单独操作使用，要放在婴幼儿不能触及的地方，以避免触电、烫伤等危险事故发生。
 - 请不要用潮湿的手插入或拔出电源插头，以免造成触电或受伤。
 - 请单独使用额定电流10A以上的带接地线插座，以免引起火灾等危险。
- 关于环境**
- 因蒸汽和热量会导致墙壁及家具受损、变色、变形，因此使用时请距离墙壁和家具30cm以上。
 - 放入厨房壁柜等地方使用时，应注意保持通风。
- 使用中**
- 请勿将内锅放置到其他热源上加热（如电磁炉、燃气炉）。
 - 请勿在排气孔或缝隙间插入任何物件，以免触电或受伤。
 - 使用中或刚使用结束，请勿用手直接接触内锅，以免高温烫伤。
 - 使用中或刚使用结束，切勿将身体靠近蒸汽口处，特别要注意不要让婴幼儿靠近，以免导致烫伤。
 - 产品工作中，请勿移动或晃动。
 - 切勿用此煲做可能引起排气孔堵塞的食物（如紫菜、海带等片状食物）。
 - 严禁使用时用其他物品覆盖电饭煲顶盖，以免蒸汽无法释放。
 - 如果保温时间超过24小时，米饭会出现异味。
 - 不要向锅中添加超过水位的配料，以避免液体漏到连接器上。
- 使用结束**
- 不使用时，切记关闭电源并拔下电源插头。
 - 必须对蒸汽排出管道做定期检查，以确保其不被堵塞。
 - 如产品发生异常或故障时，请立即停止使用，并拔掉电源插头。需等到冷却后才能开盖取出内锅。
- 其他注意事项**
- 请不要摔落本产品或碰撞坚硬物，以免造成受伤或故障。
 - 请勿在内盖结构损坏的情况下使用，以免因蒸汽、煮沸泄露造成烫伤或受伤。
 - 请勿改造。非维修技术人员，不可拆卸修理，以免造成火灾、触电及受伤。
 - 发生异常或故障时，立即停止使用，以免造成火灾、触电及受伤。
 - 器具不能在外接控制器或独立的遥控控制的系统下运行。
 - 产品上的硅胶件避免与乙醇含量大于50%的酒精饮料接触。
- 异常或故障**
- 使用中电源线、电源插头异常发热。
 - 电饭煲中有烟雾冒出、有烧焦的异味。
 - 电饭煲某部分发生裂开、松动或有异响。
 - 内锅变形。
 - 以及其他的异常或故障。

感谢选择使用joyami 智能电饭煲L1。本产品仅限于家庭使用。
 说明书中的产品、配件、用户界面等插图均为示意图，仅供参考。
 由于产品的更新与升级，产品实物与示意图可能略有差异，请以实物为准。

产品介绍



说明书中的产品、配件、用户界面等插图均为示意图，仅供参考。由于产品的更新与升级，产品实物与示意图可能略有差异，请以实物为准。

配件清单图示

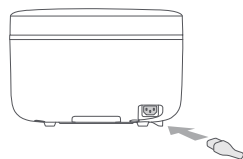


使用

连接电源线后，即可开始使用。

连接电源线

将电源线连接至主机底部的电源接口，然后将电源线另一端插入交流电插座。



连接米家APP

本产品已接入米家，可通过米家APP操控，并与其他产品互联互通。

扫描二维码，下载并安装米家APP，已安装米家APP的用户将直接进入设备连接页。或在应用商店搜索“米家”，下载并安装米家APP。打开米家APP首页，在页面右上角点击“+”，根据APP提示方式添加设备。

提示：由于米家APP的升级与更新，实际操作可能与以上描述略有差异，请按照当前米家APP内指引进行操作。



Wi-Fi连接

首次开机Wi-Fi灯闪烁，用米家APP搜索设备，即可连接。连接后Wi-Fi灯长亮，熄屏状态时熄灭。



重置Wi-Fi

同时按下“TIMER”和“SELECT/CANCEL”键3秒，可重置Wi-Fi。屏幕显示环形动画，重置成功后，Wi-Fi图标闪烁，电饭煲进入等待连接状态。



开始煮饭

1. 开盖

按开盖按钮打开上盖。

提示1：如需取出内锅，请轻推上盖使其充分打开。取出内锅时，请避免碰撞到内盖。

提示2：首次使用产品前，请使用“QUICK”模式煮清水2至3次，每次40分钟。



2. 放米放水

以煮4杯泰国香米为例，加水至相应刻度4。加水时不能超过相应水位刻度线，否则可能引起溢锅、短路等故障。



3. 设置菜单

电饭煲通电后，按“SELECT/CANCEL”按钮，选择“REGULAR”、“QUICK”或“CONGEE”等模式。精煮饭约60分钟，快煮饭约40分钟。



4. 开始煮饭

按“START”按钮进入烹饪状态。

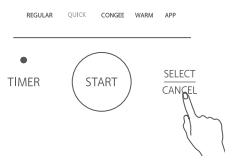
警告：“REGULAR”和“QUICK”挡仅适用于烹饪米饭，用于其他烹饪将可能导致烫伤及损害产品性能。



操作指引

菜单切换

按下“SELECT/CANCEL”按钮，选择想使用的模式。每按一次，菜单便按“REGULAR”、“QUICK”、“CONGEE”、“WARM”、“APP”顺序依次切换。



1. 精煮饭

开机默认“REGULAR”模式，烹饪时长根据不同米量程序自动进行调整（预计时长约1小时）。



2. 快煮饭

烹饪时长根据不同米量程序自动进行调整（预计时长约40分钟）。



3. 煮粥

默认时长1小时30分钟。

提示：可通过米家APP调节烹饪时长，调节范围40分钟—4小时。



4. 保温

烹饪完成后，电饭煲自动进入保温模式，保温温度维持在73℃左右。可手动选择保温模式。

提示1：建议保温时间不超过12小时。超过24小时，自动取消保温进入待机模式；

提示2：可通过米家APP设置烹饪完成是否保温；

提示3：在米家APP中选择的部分不适宜保温的模式（如：蛋糕），在烹饪完成后不会自动进入保温模式。



5. 自选

APP中推荐有多种美食制作模式，可利用APP设定其中一种作为自选功能进行烹饪。

提示1：产品出厂时自选档默认为炖煮功能。

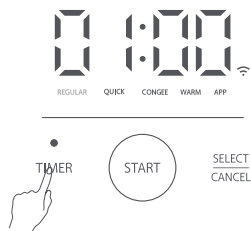
提示2：APP中含有蛋糕等烹饪功能。



6. 预约

1) 选择好烹饪模式后（选择“REGULAR”为例），按“TIMER”按钮设置预约完成时间。例如：预计两小时后开饭，则需将预约时间设置为02:00。

提示：当前时间到预约完成时间比烹饪周期时间要长，才能预约成功。否则会立即开始烹饪。

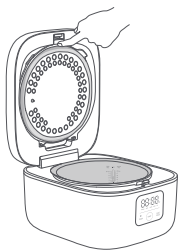


2) 预约初始界面显示所选模式烹饪所需时长。每按一下“TIMER”按钮，预约时长增加15分钟，按“START”按钮开始预约烹饪。



维护与保养

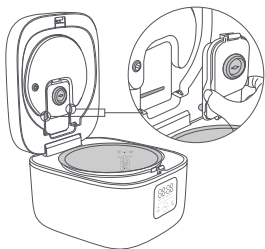
1. 拆卸



a. 向上推动内盖锁扣使内盖自动弹出

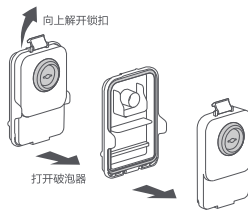


b. 双手捏住内盖将其取下



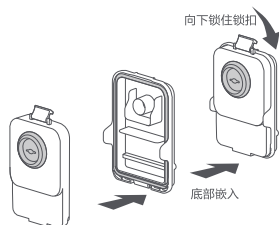
c. 拆除内盖后可见破泡器，单手捏破泡器两侧平移拉出

提示：请每次烹饪结束后清洗内盖和破泡器。

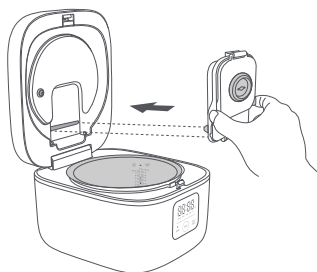


d. 破泡器上方锁扣解锁后打开破泡器，将密封条从破泡器下盖中取出

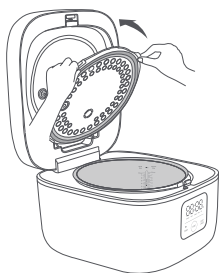
2. 安装



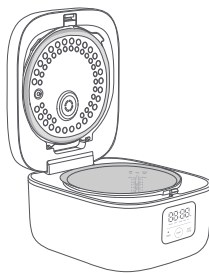
a. 密封条压入破泡器下盖卡槽中，底部对准后将上方锁扣压入扣口



b. 破泡器口对准蒸汽口安装位置向安装口慢慢压入



c. 内盖支撑环插入饭煲内盖卡槽后，以内盖底部为轴向内慢慢按入



d. 上方锁扣把内盖扣住

提示：破泡器和内盖必须安装，否则无法关盖。

故障排除

故障类型	故障判断及解决
上盖无法合上	请检查内盖是否安装
按键无反应	电饭煲是否在烹饪、预约或保温模式, 按“SELECT/CANCEL”按钮退出
煮饭漏气	上盖各硅胶密封件是否有老化、变形或破损漏气
煮饭夹生 (未煮熟)	米水比是否按要求刻度匹配(水偏少)
	米的生产日期是否超过六个月
	内锅锅底、传感器配合的顶面是否有异物
	锅底传感器铝盖表面是否变形
煮饭煮粥溢出	内锅锅底是否变形
	米水比是否按要求刻度匹配(水偏多)
	内锅锅底、传感器配合的顶面是否有异物
	锅底传感器铝盖表面是否变形
煮饭呈块状烂饭	内锅锅底是否变形
	米水比是否按要求刻度匹配(水偏多)
	保温时间是否超过12小时
煮饭过程有异味	内盖组件是否残留上次烹饪的食物和积水
	内盖密封圈是否有异味
	首次使用产品前, 请使用“QUICK”模式煮清水2至3次, 每次40分钟, 可有效减少异味。
煮饭底部焦黄	米是否淘干净
	内锅锅底、传感器配合的顶面是否有异物
	锅底传感器铝盖表面是否变形
	内锅锅底是否变形
保温变硬或异味	保温时间是否超过12小时
	内锅锅底、传感器配合的顶面是否有异物
	锅底传感器铝盖表面是否变形
	内锅锅底是否变形
预约功能不能 按要求进行	当前时间到预约完成时间比烹饪周期时间是否要短
	设置完预约时间后, 是否未按开始按钮
	手机预约时Wi-Fi是否正常
Wi-Fi连不上	用户APP版本是否为最新
	电饭煲位置Wi-Fi强度是否足够
无法更新固件	是否处于煮饭过程中
	Wi-Fi是否正常

故障代码

代码	故障描述	备注
E-09	顶部传感器损坏	请联系售后服务进行维修
E-10	底部传感器损坏	请联系售后服务进行维修
E-11	通讯故障	请联系售后服务进行维修

基本参数

产品名称	电饭煲	产品型号	JFB02M	容 积	1.6L
加热方式	电热盘加热	内锅材质	铝合金	额定功率	890-1060W
额定电压	220-240V~	额定频率	50-60Hz	产品尺寸	328×222×281mm

售后服务

如果您需要售后服务、下载电子说明书或其他信息, 或者当您遇到任何问题时, 请登录joyami.tokitglobal.com 进行咨询。