



*HYDROSTREAM 1990*



The 8-panel "STRIPER" stripe pattern - multicolor option.

## HST

Introduced in 1988, the HST has since ignited the fantasies of ultra-high performance outboarders everywhere. The design is incredibly aerodynamic, and unmistakably HydroStream. Here is a boat that truly fits the phrase "form follows function". The cambered deck plays an integral role in conjunction with the trimaran hull to provide low drag, precise handling, and the smoothest riding performance boat on the market today. *Powerboat Magazine* says "Recreational boaters with a bent for speed will find it exciting, easy to drive and amazingly forgiving". Choose from a virtually limitless color spectrum and options list to outfit your HST for your brand of excitement: tournament-style skiing, all-out performance, general cruising - OR the perfect combination of all three!

### SPECIFICATIONS:

- Length: 20'
- Beam: 88"
- Transom height: 27"\*
- Approximate weight: 900 lbs.
- Recommended HP: 175 - 235
- Hull type: AT Trimaran
- Fuel capacity: 24 gallons
- Seating: 2 buckets & rear couch

\*6" - 10" setback recommended for best performance.  
Vertically adjustable setback recommended for "perfect combination performance".

### STANDARD FEATURES:

- Dual mechanical steering
- Stowaway running lights
- 3-color gelcoat
- Built-in fuel tank with gauge
- Battery hold-down
- Custom brushed-aluminum steering wheel
- Custom heavy-duty vinyl insert rubrail
- Color coordinated marine carpeting

**NOTICE:** The HST was originally designed for marathon racing conditions and has proven its ability to handle rough, choppy water. However, extreme caution should be used when operating this boat in large swells or cruiser wakes.



The "SABRE" stripe pattern - multicolor option.



## VIRAGE/VIRAGE TURBO

These two exciting modified-vee runabouts are destined to revolutionize the under 20-foot sportboat market. The standard Virage offers premium performance in a spacious, stable, affordable package. The Turbo option adds a cuddy cabin, custom plicated interior, stereo, instrument package, and the Stage III hull configuration for improved acceleration and better load-carrying capacity. Another HydroStream original, this sleek performer has the other manufacturers scrambling to catch up. The boat shines in any situation - slow or fast, loaded or unloaded, in calm water or rough. The Virage met with success at the *Powerboat Magazine* Performance Trials, where interior expert Dick DeBartolo said, "HydroStream has done a marvelous job with the Virage's interior design. The stitch work is outstanding... All wood components are properly sealed and attention to detail is excellent... Without question, this is the most practical interior I've ever seen in a sub-20 foot air-entrapment hull."

### SPECIFICATIONS AND DIMENSIONS —

#### VIRAGE / VIRAGE TURBO:

- Length: 18'
- Beam: 90"
- Transom height: 22"
- Approximate weight: 925 lbs.
- Recommended HP: 150 - 185
- Fuel capacity: 24 gallons
- Seating: 2 buckets & rear couch, (cabin mattress on Turbo)
- Hull type: ZT Modified-Vee

#### STANDARD FEATURES:

- Running lights & switch panel
- Dual mechanical steering
- 2-color gelcoat
- Built-in fuel tank with gauge
- In-floor storage locker
- Battery hold-down
- Custom brushed-aluminum steering wheel
- Custom vinyl-insert rubrail
- Color coordinated marine carpeting
- Bilge pump
- Beverage holders
- Locking glovebox
- Simulated windscreen
- Side cockpit storage ports
- Driver's seat slide/passenger swivel

#### ADDITIONAL STANDARD FEATURES — VIRAGE TURBO:

- Stage III ZT hull design
- Formulating steering wheel with anodized hub
- Six-gauge pre-wired dash layout with anodized bezels
- Anodized grab rail
- Custom plicated upholstery with coaming pads
- 6' + under cabin berth with cabin lighting, side pads, mattress, locking forward storage, custom headliner
- Marine stereo system with weather cover
- Multicolor Turbo graphics package



*Multicolor Turbo graphics package.*



## VENUS XT

This mainstay in the HydroStream line has been continually refined so that today, we can offer the discerning boater a true high-performance cuddy with all the comforts of home. From the little touches, like padded cabin sides, plush mattress, custom headliner and soft cabin lighting, to the obvious extras such as swivel and slide seats, deck hatch, bow railings and high-performance patented HydroStream hull design, the Venus truly fits the description, "performance cruiser". One thing's for sure: no one on the lake will have anything like it. As *Trailer Boats* magazine says, "Quite possibly the quickest cuddy on the water".

### SPECIFICATIONS:

- Length: 20'
- Beam: 89"
- Transom height: 23"
- Approximate weight: 950 lbs.
- Recommended HP: 115 - 235
- Fuel capacity: 24 gallons
- Seating: 2 buckets & rear couch; cabin mattress
- Hull type: XT Modified-Vee

### STANDARD FEATURES:

- Running lights & switch panel
- Dual mechanical steering
- 3-color gelcoat
- Built-in fuel tank with gauge
- In-floor storage locker
- Battery hold-down
- Custom brushed-aluminum steering wheel
- Custom vinyl-insert rubrail
- Color coordinated marine carpeting
- Driver's seat slide/passenger swivel
- Bilge pump
- Beverage holders
- Tinted safety-glass windshield
- Deck railings/hardware
- Custom taak appointments
- Padded dash panel
- Custom headliner
- Cabin lighting
- Cabin mattress & side pads
- Locking forward storage



The "STRIPE" stripe pattern - multicolor option.

The "PANEL" stripe pattern - multicolor option.





## VISA

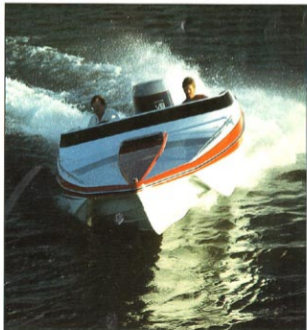
HydroStream charts new waters with our largest boat ever, the revolutionary new 24' Visa. The response from our customers has been nothing short of tremendous! Why? They know that the new hull, (based on our patented XT modified-vee design) features stability, handling, and a rough-water ride quality unmatched in the marine industry. The sleek deck design is a definite head-turner, while the richly appointed interior and plush cabin will delight the boater who likes the ultimate luxuries to go with the performance. Available from mild (single small-block V8 sterndrive) to wild (twin V6 outboards or V8 sterndrives), the Visa creates instant and lasting excitement.

### SPECIFICATIONS:

- Length: 24'
- Beam: 102"
- Transom height - O/B: 25"
- Recommended HP - O/B: 150 - 350
- Seating: 2 forward buckets and rear couch; forward cabin accommodations
- Hull type: XT Modified-Vee

### STANDARD FEATURES:

- Recessed deck clasts
- Integral deck rails
- Flush mount cabin hatch
- (Gas-shock assisted)
- Padded rear sun platform
- Running lights
- Dash tray with molded grab rail
- Locking glovebox
- In-floor locker
- Side/rear storage
- Under-platform (rear) molded-in refreshment area with self-draining well, 2-48 quart coolers, two-tier bottle and beverage rack
- Forward under-deck playpen cabin with locking storage, mattress, drink holders, headliner, soft lighting
- Cockpit lighting
- Full instrumentation
- Fuel tank
- Hi-power marine stereo
- Bilge pump
- Halon fire extinguisher
- Horn
- (I/O) 5.7L V8 OMC/Merc/Yamaha sterndrive (optional engines available - contact your dealer)





## VEGAS XT, VEGAS I/O, VEGAS XL

For the boater who wants exhilarating performance but needs more room, the Vegas fits the bill! Rated for up to 235 outboard horsepower, this modified-vee sportboat provides lake-dominating performance with a plush, accommodating interior and abundant storage space. Ride? The patented XT hull affords top-notch handling and a knack for smoothing out the nastiest chop. If you are located in coastal areas and freeboard is a concern, check out the V-bottom Vegas XL designed for extra long shaft (25") motors. If you're a sterndrive buff, check out the Vegas I/O. Available with V6 or all-out 320 EFI V8 power, it's tough to beat! "This is a boat that is forgiving, extremely spirited, very fast and one that will make virtually any driver feel at ease behind the wheel!"—Jim Youngs, *Trailer Boats*.

### SPECIFICATIONS:

- Length: 20'
- Beam: 89"
- Transom height - XT: 23"  
- XL: 29"
- Approximate weight - XT: 875 lbs.  
- XL: 1,100 lbs.
- Recommended HP: 115 - 235
- Fuel capacity - O/B: 24 gallons  
- I/O: 30 gallons
- Seating: 2 buckets & rear couch
- Hull type: - XT: Modified-Vee  
- XL: Pad-Vee  
- I/O: Pad-Vee

### STANDARD FEATURES:

- Running lights & switch panel
- Dual mechanical steering (O/B)
- 3-color gelcoat
- Built-in fuel tank with gauge
- In-floor storage locker
- Battery hold-down
- Custom brushed-aluminum steering wheel
- Custom vinyl-insert rubrail

### I/O ENGINE OPTIONS:

- 4.3L Merc/OMC/Yamaha V6
- 5.7L Merc/OMC/Yamaha V8
- 350 Merc Magnum/350 OMC Cobra

- Color coordinated marine carpeting
- Driver's seat slide/passenger swivel
- Tinted safety-glass windshield
- Bilge pump
- Beverage holders
- Locking storage compartment
- Full instrumentation (I/O)
- Bilge Blower (I/O)

- 320 EFI Merc/Bravo
- 320 EFI Merc/Alpha One S.S.



# VASSERET (VASS-ER-AY)

The Vasseret took top honors as *Powerboat Magazine's* "OUTBOARD BOAT OF THE YEAR". This quick family outboard offers performance similar to the Valero and Viking, while incorporating an open bow deck configuration for maximum space utilization. The result is an incredible value for the performance-oriented family boater. *Powerboat's* Mark Spencer best sums up the Vasseret by saying, "It is fast, quick, controllable, well made, nicely appointed and reasonably priced. What more could you want?"

## SPECIFICATIONS:

- Length: 17' 9"
- Beam: 89"
- Transom height - YT: 24"  
- V-bottom: 22½"
- Approximate weight - YT: 800 lbs.  
- V-bottom: 750 lbs.
- Recommended HP - YT: 150 - 175  
- V-bottom: 85 - 175
- Fuel capacity - YT: 24 gallons  
- V-bottom: 16 gallons
- Seating: 2 buckets & rear couch; forward bowrider seating
- Hull type - YT: Modified-Vee  
- V-bottom: Pad-Vee

## STANDARD FEATURES:

- Running lights & switch panel
- Dual mechanical steering
- 3-color gelcoat
- Built-in fuel tank with gauge
- In-floor storage locker (not on V-bottom)
- Battery hold-down
- Custom brushed-aluminum steering wheel
- Custom vinyl-insert rubrail
- Color coordinated marine carpeting
- Bilge pump
- Beverage holders
- Locking gloveboxes (2)
- Driver's seat slide/passenger swivel
- Custom teak appointments
- Deck railings/hardware
- Tempered-glass walk-thru windshield
- Snap-in vinyl walk-thru curtain



## VOYAGER XT, VOYAGER I/O



Perhaps our most versatile boat, the Voyager is fast becoming one of America's best-known performance bowriders because it does so many things so well! Seating? Bring your family and friends. Storage? Plenty. Handling? It handles fantastically and goes through rough water like a freight train. Outfit it with a convertible top set and bow cover for foul-weather protection; the optional stereo systems and ski-tow complete the package. "HydroStream has come up with a combination that's ideal for the boater who likes to take the entire family, but still wants a little extra performance left over" - *Powerboat Magazine*.

### SPECIFICATIONS:

- Length: 20'
- Beam: 89"
- Transom height - XT: 23"
- Approximate weight: 950 lbs.
- Recommended HP - XT: 115 - 235
- Fuel capacity - O/B: 24 gallons  
- I/O: 25 gallons
- Seating: 2 buckets & rear couch; forward  
- 2 body contoured loungers
- Hull type - XT: Modified-Vee  
- I/O: Pad-Vee

### STANDARD FEATURES:

- Running lights & switch panel
- Dual mechanical steering
- 3-color gelcoat
- Built-in fuel tank with gauge
- In-floor storage locker
- Battery hold-down
- Custom brushed-aluminum steering wheel
- Custom vinyl-inset rubrail
- Custom teak appointments
- Color coordinated marine carpeting
- Driver's seat slide/passenger swivel
- Bilge pump
- Beverage holders
- Bilge blower (I/O only)
- Full instrumentation (I/O)
- Safety-glass windshield
- Deck railings
- Locking glovebox
- Snap-in vinyl walk-thru curtain

### I/O: ENGINE OPTIONS

- 4.3L Merc/OMC/Yamaha V6
- 5.7L Merc/OMC/Yamaha V8
- 350 Merc Magnum/350 OMC Cobra

- 320 EFI Merc/Bravo
- 320 EFI Merc/Alpha One S.S.





# VISTA

The Vista represents a breakthrough in performance bowrider design. It boasts the superior ride, handling, comfort and at-rest stability of the ZT modified-vee hull. In addition, it claims the largest interior offered in an 18' bowrider! The Vista must be experienced firsthand. Its spacious, comfortable interior coupled with its amazing smoothness and handling will delight you for many years to come.

#### SPECIFICATIONS:

- Length: 18'
- Beam: 90"
- Transom height: 22"
- Approximate weight: 950 lbs.
- Recommended HP: 120 - 185
- Fuel capacity: 24 gallons
- Seating: 2 buckets and rear couch, forward bowrider seating
- Hull type: ZT Modified-Vee



#### STANDARD FEATURES:

- Running lights & switch panel
- Dual mechanical steering
- 3-color gelcoat
- Built-in fuel tank with gauge
- In-floor storage locker
- Battery hold-down
- Custom brushed-aluminum steering wheel
- Custom heavy-duty vinyl insert rubrail
- Color coordinated marine carpeting
- Bilge pump
- Beverage holders
- Locking glovebox
- Driver's seat slide/passenger swivel
- Custom teak appointments
- Deck railings/hardware
- Tempered-glass walk-thru windshield
- Snap-in vinyl walk-thru curtain
- Beverage cooler

## VALERO and VIKING

The Viking and Valero differ only in exterior styling and interior room. The Viking offers the traditional HydroStream "look", while the Valero gains some rear seat room with a more conventional deck design. These two mid-sized sportboats are perfect for today's smaller V6 engines. If economy is a factor, opt for the V-bottom hull configuration and obtain strong performance from a V4 or in-line outboard. Either way, you'll be at the head of the pack! Both race and pleasure proven, they have stood the test of time and are available to delight performance enthusiasts everywhere.



The "TRIDENT" stripe pattern.



### SPECIFICATIONS:

- Length: 17' 9"
- Beam: 89"
- Transom height - YT: 24"  
- V-bottom: 22½"
- Approximate weight - YT: 675 lbs.  
- V-bottom: 625 lbs.
- Recommended HP - YT: 150 - 175  
- V-bottom: 85 - 175
- Fuel capacity - YT: 24 gallons  
- V-bottom: 16 gallons
- Seating: 2 buckets and rear couch
- Hull type - YT: Modified-Vee  
- V-bottom: Pad-Vee

### STANDARD FEATURES:

- Running lights & switch panel
- Dual mechanical steering
- 3-color gelcoat
- Built-in fuel tank with gauge
- In-floor storage locker (not on V-bottom)
- Battery hold-down
- Custom brushed-aluminum steering wheel
- Custom vinyl insert rubrail
- Color coordinated marine carpeting
- Bilge pump
- Beverage holders
- Driver's seat slide/passenger swivel (Valero only)
- Tinted windshield



## HOOKER SC/DC

Here are two fishing machines that are truly "state of the art". The Hooker SC (single-console) and DC (dual-console) offer HydroStream's patented ZT modified-vee hull, which provides superior cornering ability, room, ride, and all-rest stability. The performance outshines all other competitors. The interior seating is a new design that closely resembles the Picaro-style seating available in many line sportscars. Both boats are serious fishing machines, either model gives the tournament fisherman that extra edge during competition. Whether you're a professional angler or a recreational fisherman, you can put to use the extra gear and maneuvering room, and the Hooker SC or DC will give you years of first-rate performance. If you don't want to see only our transom, choose a Hooker!

### SPECIFICATIONS:

- Length: 18'
- Beam: 90"
- Transom height: 22"
- Approximate weight: 1,050 lbs.
- Recommended HP: 150 - 185
- Fuel capacity: 24 gallons (optional 40 gallon available)
- Seating: 4 bucket seats, 1 bicycle seat
- Hull type: ZT Modified-Vee
- 5" - 6" setback recommended for best performance.

### STANDARD FEATURES:

- Running lights
- Dual mechanical steering
- 3-color gelcoat
- Built-in fuel tank with gauge
- Custom brushed-aluminum steering wheel
- Color coordinated marine carpeting
- Bilge pump
- Dashboard instrumentation
- Dual switch panels
- 12/24 volt chargeback panel
- #6-gauge trolling motor wiring harness
- Locking glovebox and rod storage (lighted)
- Locking deck hatches
- Carpeted storage bins
- Courtesy lights
- Battery tray
- Deck cleats
- Rear 58" aerated livewell (baffled)
- Aerated front livewell
- Livewell timer
- Remote fill/drain controls
- Insulated cooler
- Heavy duty vinyl insert rubrail
- Tackle box storage trays
- Tinted windshield (2 on DC)
- Custom bolster-bucket seats
- Bicycle seat
- Power pedestals
- Extended casting platform (DC only)



# HYDROSTREAM CLASSICS

These "classic hot outboard" runabouts have stood the test of time, so unlike other boat companies who regularly discontinue models in favor of new ones, we offer these favorites as "HydroStream Classics". Back in the 1970's, the "boat to beat" was a HydroStream vee-pad sportboat. If you owned one of the original 'Streams, you were a force to be reckoned with. Each model features the same exotic styling, exhilarating performance, superior ride, and precise handling that won accolades a decade ago. Each Classic has been updated to 1990's specs with the addition of new graphics and a wide variety of standard and optional features, each designed to add comfort and convenience for the Classic owner of today. Our claims of performance such as "Runs like a 115 with your 85", "Minimum weight attained through the use of contoured, skin-stressed surfaces", and "Every component of style is an active additive to performance" still hold true today. If your idea of boating excitement involves all these attributes, then a Classic is the right boat for you. The new HydroStream Classics...a fresh alternative to today's "copycat" boating market!

## STANDARD FEATURES — CLASSICS:

- Built-in fuel tank with gauge (not on Hustler)
- Mechanical steering (dual cable on Vulture XT)
- 3-color gelcoat
- Battery hold-down (not on Hustler)
- Custom brushed-aluminum steering wheel
- Custom vinyl insert rubrail
- Color coordinated marine carpeting
- Stowaway running lights
- Stowaway beverage holders
- Bilge pump (not on Hustler)
- Tinted windscreen (not on Hustler)

## HUSTLER

### SPECIFICATIONS:

- Twin-hull or Vee-pad
- Boat type: 2-seat sportabout
- Length: 11' 6"
- Beam: 62"
- Transom height - Twin-hull: 15"  
- Vee-pad: 20"
- Recommended HP - Twin-hull: 15 - 25  
- Vee-pad: 20 - 30
- Seating: 2 person bucket
- Approximate weight: 300 lbs.



## VERADO

### SPECIFICATIONS:

- Boat type: 4-passenger, Vee-pad runabout
- Length: 16' 6"
- Beam: 84"
- Transom height: 22"
- Recommended HP: 50 - 140
- Seating: 2 buckets & rear couch
- Approximate weight: 600 lbs.

## VULTURE XT

### SPECIFICATIONS:

- Boat type: 5-passenger, Modified-Vee runabout
- Length: 20'
- Beam: 89"
- Transom height: 23"
- Recommended HP: 115 - 235
- Seating: 2 buckets & rear couch, padded rear sun deck
- Approximate weight: 875 lbs.



The "TRIDENT" stripe pattern - multicolor option.



## VIPER

### SPECIFICATIONS:

- Boat type: 4-passenger, Vee-pad runabout
- Length: 15'
- Beam: 89"
- Transom height: 21 1/4"
- Recommended HP: 50 - 120
- Seating: 2 buckets & rear couch
- Approximate weight: 570 lbs.

# WHY SHOULD YOU OWN A HYDROSTREAM?

When shopping for a new boat, you will undoubtedly read many boat brochures that make exaggerated claims concerning superior quality. At HydroStream, our goal is not to bore you with outrageous claims, but to provide you with enough information to help you make intelligent, informed choices when making your next performance boat purchase. We think there are at least four good reasons for you to buy a HydroStream.

## 1. ENGINEERING

HydroStream leads the industry in the field of hydraulic and aero design as it applies to performance pleasure boats.

V



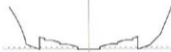
Famous throughout the 70's, HydroStream "V"-hulls won more championships and set more records than any other boats. Their performance was so notable that today the majority of the high-performance vee-hull Bass Boats available utilize some form of HydroStream's time-tested designs.

XT



Five years of customer satisfaction prove the superiority of the XT modified-vee design. It is the only air-trapping hull that efficiently carries weight. In addition, its zero-impact sponsons ensure the softest and smoothest ride in the industry.

YT



Both hulls are full-sponsored and offer unmatched stability and maneuverability. YT hulls, offered on the Valero, Viking and Vasseret, feature vee-bottom quickness combined with venturi-hull handling characteristics. The ZT hull, featured on Virage, Vista and Hooker hulls, is the smoothest riding, most stable 18' hull on the market. Plus, it has tremendous room for passengers and gear!

ZT

AT



Used exclusively on the HST, the AT is a twin-venturi trimaran design for light-to-medium loads. This hull extracts maximum performance from an outboard powerplant. To say that it turns as if on rails is a drastic understatement.

Four completely different HydroStream all-original designs, and each one a winner. Don't find yourself in someone else's wake - choose a HydroStream for your next performance boat. Your informed decision will reward you for many years to come.

## WHAT DO THE EXPERTS SAY?

"Nobody will ever accuse Howard Pipkorn of copying anything or following conventional design methods. The man has always beat to the tune of his own drum and it's about time he was given credit for being one of the most innovative minds in the business." - Bob Nordskog, *Powerboat Magazine*

## 2. *DISTINCTIVE STYLING*



Since their inception, HydroStream boats have had their own profile; from across the lake, it has always been easy to pick out the boat that stands apart from the "me too" designs. If you are a boater with highly individualized tastes, then your obvious choice is a HydroStream all-original design.

### WHAT DO THE EXPERTS SAY?

"HydroStream boats have always been unconventional rather than just an interpretation of another fast boat or a refresh of existing performance products." - *Tailer Boats Magazine*



## 3. *RACE PROVEN HULLS*



All HydroStream hull designs have been put to the ultimate test - the proving ground of Outboard Performance Craft racing. The grueling rigors of OPC closed-course and marathon racing provide the supreme test for stability, physical structure, cornering ability and many other facets of design. The final test of HydroStream boats is racing, and the records point out again and again the superiority of HydroStream.

### WHAT DO THE EXPERTS SAY?

"...HydroStream creations have held just about every V-bottom closed-course, straightaway and marathon record at one time or another." - *Powerboat Magazine*



## 4. *GRAPHICS QUALITY*

HydroStream painstakingly masks the molds and sprays each element of every complex graphic pattern to ensure the gloss, durability and appeal our customers expect. The result is a true custom boat, without the hassles, disappointing taped-on graphics, high prices and delays often encountered when dealing with the so-called "custom boatbuilders."

### WHAT DO THE EXPERTS SAY?

"Despite the fact that the company is a high-volume, mass-production shop, its mold detail and gelcoat workmanship is on a par with the best in the custom industry....HydroStream is refuting the age-old claim by the major manufacturers that tape trim is the only affordable way to mass-produce boats...HydroStream does gelcoat graphics as well as Southern California's finest." - *Powerboat Magazine*



O Standard  
 O Optional  
 - Not available  
 OR Not  
 Applicable

	OPTIONAL EQUIPMENT											GRAPHICS OPTIONS											
	Modular Concept Group	Custom Cockpit Group	Stereo	Upgrade Stereo	Pre-Rig	Upgrade Pre-Rig	Ski Tow Bar	Swim Platform	Custom Paint Upholstery	Heavy Duty Battery Box	Trim Tabs	Moorng Cover	Convertible Top Set	Windshield	Dual Steering	In-Dash Locator	Surface Temp. Gauge	3-Color Gel or Flake	Additional Colors/Stripes	"Singer" Stripe Pattern	"Pacer" Stripe Pattern	"Trident" Stripe Pattern	"Subie" Stripe Pattern
HUSTLER	-	-	-	-	-	-	-	-	-	-	-	-	-	-	-	-	-	-	-	-	-	-	-
VIPER	O	O	O	-	O	O	O	O	O	O	O	O	O	O	O	O	O	O	O	O	O	O	O
VERADO	O	O	O	O	O	O	O	O	O	O	O	O	O	O	O	O	O	O	O	O	O	O	O
VIKING	O	O	O	O	O	O	O	O	O	O	O	O	O	O	O	O	O	O	O	O	O	O	O
VALERO	O	O	O	O	O	O	O	O	O	O	O	O	O	O	O	O	O	O	O	O	O	O	O
VASSERET	O	O	O	O	O	O	O	O	O	O	O	O	O	O	O	O	O	O	O	O	O	O	O
VIRAGE	O	O	O	O	O	O	O	O	O	O	O	O	O	O	O	O	O	O	O	O	O	O	O
VIRAGE TURBO	-	O	O	O	O	O	O	O	O	O	O	O	O	O	O	O	O	O	O	O	O	O	O
HOOKER SC	S	-	-	-	O	O	O	-	O	-	-	-	-	-	-	-	-	-	-	-	-	-	-
HOOKER DC	S	-	-	-	O	O	O	-	O	-	-	-	-	-	-	-	-	-	-	-	-	-	-
VISTA	O	O	O	O	O	O	O	O	O	O	O	O	O	O	O	O	O	O	O	O	O	O	O
VEGAS XT	O	O	O	O	O	O	O	O	O	O	O	O	O	O	O	O	O	O	O	O	O	O	O
VEGAS XL	O	O	O	O	O	O	O	O	S	-	-	-	-	-	-	-	-	-	-	-	-	-	-
VENUS	O	O	O	O	O	O	O	O	O	O	O	O	O	O	O	O	O	O	O	O	O	O	O
VOYAGER	O	O	O	O	O	O	O	O	O	O	O	O	O	O	O	O	O	O	O	O	O	O	O
VULTURE XT	O	O	O	O	O	O	O	O	O	O	O	O	O	O	O	O	O	O	O	O	O	O	O
VEGAS I/O	S	O	O	S	-	S	O	O	O	-	-	-	-	-	-	-	-	-	-	-	-	-	-
VOYAGER I/O	S	O	O	S	-	S	O	O	O	O	-	-	-	-	-	-	-	-	-	-	-	-	-
HST	-	O	O	O	O	O	O	O	O	O	O	O	O	O	O	O	O	O	O	O	O	O	O
VISA	-	S	-	S	O	O	S	O	S	-	-	-	-	-	-	-	-	-	-	-	-	-	-
VISA I/O	-	S	-	S	S	-	S	O	S	-	-	-	-	-	-	-	-	-	-	-	-	-	-

**NOTES:** An important note about the information in this catalog... Every effort has been made to insure that the information contained in the catalog is complete and accurate. However, HydroStream's continuing program of product improvement makes specifications, standard equipment, and optional equipment subject to change without notice. Also, some equipment shown on HydroStream's boats in this catalog is available only at extra cost. We suggest that you check with your HydroStream dealer for current and complete information.

In some instances, photographs in this catalog show experienced drivers operating HydroStream boats in an extreme manner with special equipment and under optimum conditions. HydroStream does not recommend such use of its products by the inexperienced driver without special equipment and/or under less than optimum conditions. We at HydroStream continually stress safety and recommend the wearing of personal flotation devices (PFDs) and the use of other safety equipment, such as emergency ignition cutout devices, during all boating activities. Further, we encourage all drivers to exercise such prudence and caution in the operation of any boat warranted by their level of experience and the conditions present at that time.

## HYDROSTREAM'S LIMITED WARRANTY

HydroStream warrants (only to the original purchaser) its new HydroStream boats to be free from defects in material and workmanship under normal use for a period of one year from the date of sale to the original purchaser. A complete copy of the HydroStream Limited Warranty can be obtained from any HydroStream dealer or from the HydroStream factory.

**WARNING:** Extreme caution should be used when operating performance boats, especially when engines are installed in excess of 75% of the rated horsepower capacity. In instances where the horsepower exceeds 75% of the rated horsepower capacity, we strongly recommend the installation of heavy duty mounts on engines not so equipped, and the installation of dual steering, foot-actuated throttle, and remote trim controls on boats not so equipped. In addition, always be sure maximum and minimum trim limits are properly adjusted, as improper adjustment could cause injury.

FOR MORE INFORMATION CONTACT:

### PICK'S BOATHOUSE

4410 MANCHESTER RD. (RT. 93)  
 AT TURKEYFOOT LAKE RD. (RT619)  
 AKRON, OHIO 44312 (216) 544-4711

**HydroStream**  
 2059 White Bear Avenue  
 Maplewood, Minnesota 55109  
 Phone (612) 777-4802