



HydroStream '80

HydroStream

It is our purpose at HydroStream to provide the buyer with the most innovative engineering available to achieve a performance and styling unique to itself. The elements of HydroStream design are more than style, they are additions to performance. Intensive use of sculptured skinstressed surfaces reduce weight and increase strength. Superiority, however, is not attained by design alone. Craftsmanship and quality construction materials are a necessity. All prototypes of our models and materials undergo many hours of developing, testing, proving, correcting and retesting. HydroStream is continually researching and testing new concepts and materials to achieve a higher degree of performance and styling.

1977 World Racing Champion, Howard Pipkorn, member of the American Power Boat Association "Hall of Champions", and several time National Champion, uses his racing experience coupled with engineering skills to design HydroStream products. His winning record is positive documentation of HydroStream performance and endurance.

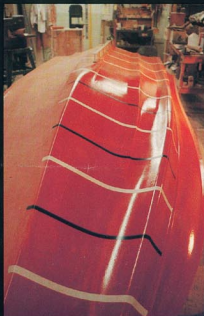


NOTE:

In some instances, photographs in this catalog show experienced drivers operating HydroStream boats in an extreme manner with special equipment and under optimum conditions. HydroStream does not recommend such use of its products by the inexperienced driver under any circumstances or by the average or experienced driver without special equipment and/or under less than optimum conditions. We at HydroStream continually stress safety and recommend the use of life preservers and other safety equipment during all boating activities. Further, we encourage all drivers to exercise such prudence and caution in the operation of any boat warranted by their level of experience and the conditions present at the time.

WARNING

Extreme caution should be used when operating performance boats, especially when engines are installed in excess of 75% of the rated horsepower capacity. In instances where the horsepower exceeds 75% of the rated horsepower capacity, we strongly recommend the purchase and use of optional dual steering on models not so equipped and the installation of heavy duty mounts on engines not so equipped. In addition, always be sure maximum and minimum trim limits are properly adjusted, as improper adjustment could cause injury.



Vandal

Spirit, performance and economy are all elements of the Vandal's personality. Styling with a racey flair and seating for four team up to make the Vandal functional, efficient and affordable.

SPECIFICATIONS:

Length — 14'6" (442 CM)

Beam — 73" (185 CM)

Transom Height — 21½" (55 CM)

Maximum H.P. — 80

STANDARD FEATURES:

- Deep-pile marine carpeting
- Mechanical steering
- Low profile, tinted windscreen
- Recessed, wrap around instrument panel
- Convenient passenger side storage tray
- Back to back black bucket seats
- Red, blue or apricot metallflake finish

OPTIONS:

- Special Edition two-tone color schemes*
- Deluxe color-coordinated 2 plus 2 interior
- Limited Edition Vandalizer Package — steel blue metallflake deck with trichromatic phaser shearline stripes and black hull, black anodized grab rails, and black 2 plus 2 seating
- Dual steering
- Stowaway running lights
- Mooring cover

*See Special Edition color scheme descriptions on page 15.



The "Vandalizer" color scheme

The "Daredevil" color scheme



Viper

The Viper represents the finest 15 feet of ski, pleasure or performance available. Ultimate efficiency has been united with superior control to yield a boat you will never tire of.

SPECIFICATIONS:

- Length — 15' (457 CM)
- Beam — 86" (218 CM)
- Transom Height — 21 3/4" (55 CM)
- Maximum H.P. — 120

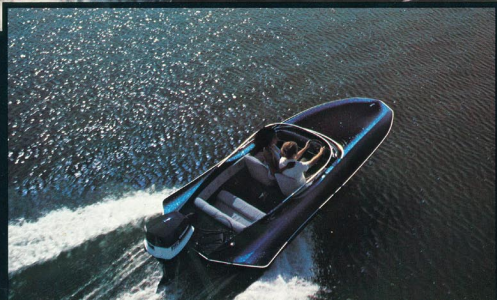
STANDARD FEATURES:

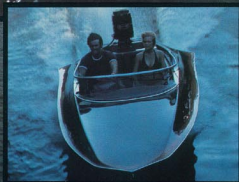
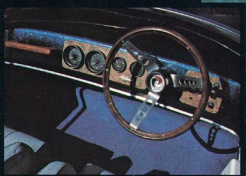
- Deep-pile marine carpeting
- Mechanical steering
- Low profile, tinted wind-screen
- Two forward facing buckets and rear bench seat
- Red, blue or apricot metallflake finish with standard black interior.

OPTIONS:

- Deluxe Special Edition Package including Special Edition two-tone color scheme*, deluxe color-coordinated interior, illuminated gauge panel, fused switch panel, stowaway running lights, and teak grab rail
- Dual steering
- 16 gallon fuel tank
- Mooring cover

*See Special Edition color scheme descriptions on page 15.





The "Bruiser" color scheme

The "Silver Streak" color scheme

Ventura

This super ski boat is truly a top performer in all respects. NEW, 2 plus 2 seating and deep-pile marine carpeting appoint the Ventura's spacious cockpit. Its renowned handling and distinctive ride have accounted for its unchallenged reputation in the field of performance boating.

SPECIFICATIONS:

- Length - 16'6" (503 CM)
- Beam - 84" (213 CM)
- Transom Height - 22" (56 CM)
- Maximum H.P. - 140

STANDARD FEATURES:

- Deep-pile marine carpeting
- Mechanical steering
- New, 2 plus 2 standard black interior
- Red, blue or apricot metallflake finish

OPTIONS:

- Deluxe Special Edition Package including Special Edition two-tone color scheme*, deluxe color-coordinated interior, illuminated gauge panel, fused switch panel, stowaway running lights, and teak grab rail
- Low profile, tinted windscreen
- Dual steering
- Mooring cover

*See Special Edition color scheme descriptions on page 15.

The "Moonshadow" color scheme



Vector

The mid-sized performance sport run-about, tailored for today's mid-sized outboards. For breathtaking styling and exceptional performance, Vector is your key to independent excitement.

SPECIFICATIONS:

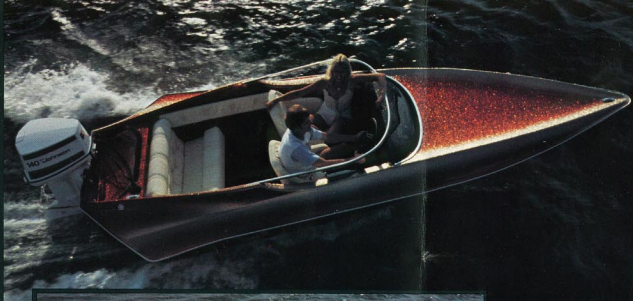
Length - 17'1" (521 CM)
Beam - 89" (226 CM)
Transom Height - 23" (58 CM)
Maximum H.P. - 145

STANDARD FEATURES:

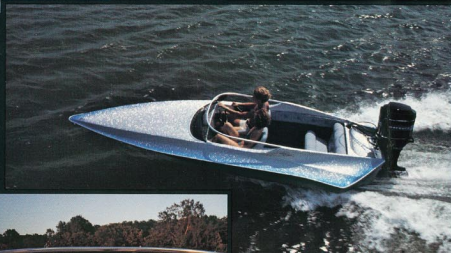
- Deep-pile marine carpeting
- Mechanical steering
- Low profile, tinted windscreen
- Two forward facing buckets and rear bench seat
- Red, blue or apricot metallflake finish with standard black interior

OPTIONS:

- Deluxe Special Edition Package including Special Edition two-tone color scheme*, deluxe color-coordinated interior, illuminated gauge panel, fused switch panel, stow-away running lights and teak grab rail
- Dual steering
- 16-gallon fuel tank
- Mooring cover



The "Blue Streak" color scheme



*See Special Edition color scheme descriptions on page 15.

The "Autumn Mist" color scheme



Vamp

Unique aptly describes the Vamp . . . from its roomy main cockpit with reclining buckets . . . through the body contoured forward chaise lounges . . . up the plushly carpeted companionway steps, the Vamp is truly unparalleled.

SPECIFICATIONS:

- Length — 16'6" (503 CM)
- Beam — 84" (213 CM)
- Transom Height — 20½" (52 CM)
- Maximum H.P. — 140

STANDARD FEATURES:

- Deep-pile marine carpeting
- Mechanical steering
- Low profile, walkthrough windscreen
- Aluminum grab rails
- Fused switch Panel
- Running lights
- Teak appointments
- Deck cleats
- Body contoured forward lounges
- Reclining back to back bucket seats
- Special Edition Autumn Mist, Coco Loco or Sunset color schemes*

OPTIONS:

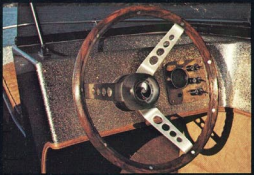
- Dual Steering
- Conventional height clear walkthrough windshield for use with optional convertible top
- Convertible top
- Side and aft curtains
- Bow cover
- Mooring cover

*See Special Edition color scheme descriptions on page 15.



The "Sunset" color scheme





Viking

For the serious performance enthusiast the Viking is well established as ruler of the lake. Viking is the climax in the search for the "classic hot outboard". Let this year's Viking take you from the 70's into the 80's.

SPECIFICATIONS:

Length - 17'9" (541 CM)

Beam - 89" (226 CM)

Transom Height - 22½" (57 CM)

Maximum H.P. - 175

STANDARD FEATURES:

● Deep-pile marine carpeting ● Dual mechanical steering ● Low profile, tinted windscreen ● Two forward facing buckets and rear bench seat ● Red, blue or apricot metalflake finish with standard black interior.

OPTIONS:

● Deluxe Special Edition Package including Special Edition two-tone color scheme*, deluxe color-coordinated interior, illuminated gauge panel, fused switch panel, stowaway running lights, and teak grab rail ● 16 gallon fuel tank ● Mooring cover

The "Elite" color scheme

The "Desert Brown" color scheme

**See Special Edition color scheme descriptions on page 15.*



Vulture

This 6.1 meters of luxury, beautifully appointed inside and out, will more than accommodate six adults. Its long keel and gullwing design offer you the smoothest ride on the lake.

SPECIFICATIONS:

Length — 20' (610 CM)

Beam — 89" (226 CM)

Transom Height — 21" (53 CM)

Maximum H.P. — 200

STANDARD FEATURES:

- Deep-pile marine carpeting
- Dual mechanical steering
- Low profile, tinted windscreen
- Back to back bucket seats and rear wrap around lounge seat
- Deck cleats
- Ultra spacious interior
- Red, blue or apricot metalflake finish with black interior

OPTIONS:

- Deluxe Special Edition Package including Special Edition two-tone color scheme*, color-coordinated interior, illuminated gauge panel, fused switch panel, stowaway running lights and teak grab rail
- 20 gallon fuel tank
- Mooring cover

The "Coco Loco" color scheme

*See Special Edition color scheme descriptions on page 15.



Venus

Peruse your favorite cove. Challenge the local flotilla. Let the waves rock you to sleep in the spacious forward cabin. Sunbathe on the rail-bounded upper deck. Lead the fleet back to port with an abundance of pride. This could be your day in the Venus.

SPECIFICATIONS:

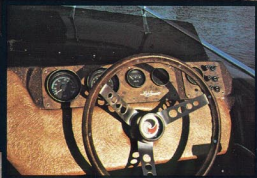
- Length — 20' (610 CM)
- Beam — 89" (226 CM)
- Transom Height — 21" (53 CM)
- Maximum H.P. — 200

STANDARD FEATURES:

- Deep-pile marine carpeting ● Dual mechanical steering ● Fused switch panel ● Running lights ● Tinted windscreen ● Aluminum railings ● Deck cleats ● Side cabin windows ● Plush headliner ● Cabin mattress ● Locking beverage cabinet ● Interior light ● Lockable forward storage area ● Special Edition Coco Loco metallflake finish and gold laser deck striping

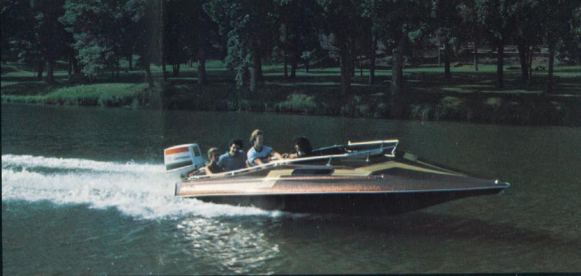
OPTIONS:

- Illuminated gauge panel ● Cabin hatch ● 20 gallon fuel tank ● Mooring cover





Optional Cabin Hatch



Accessories

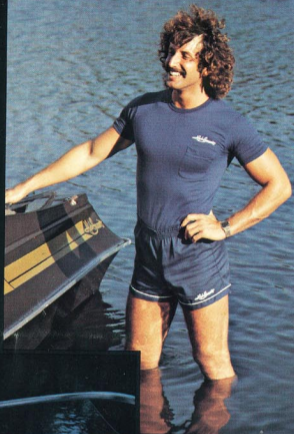
See your HydroStream dealer for these and other HydroStream accessories.



HydroStream Water Ski —
available in 65", 67" and 69"



HydroStream Cap —
available in S—M and L—XL



HydroStream T-Shirt and
Shorts —
available in S—M—L and XL



HydroStream Jacket —
available in S—M—L and XL

WHAT IS PERFORMANCE?

To many people it means only speed . . . however, since additional speed can be gained by merely adding power, any boat with abundant rated horsepower could be labeled a performance boat. Moreover, performance is a total package including ride, handling and acceleration. At HydroStream, performance means MAXIMIZING these attributes using a given amount of power. To accomplish this we, among other things, concentrate on weight and drag. Drag, the friction between your boat and the water, is the major factor in determining efficiency and economy. Strake size and placement, lift surface contours and entry and attack angles, all contribute to minimizing drag in HydroStream boats. Reducing weight further reduces drag. Minimum weight is attained through the use of contoured, skin-stressed surfaces and lightweight reinforcing members to achieve the strength and durability of boats weighing much more. This means that a HydroStream boat will run like a 115 with your 85.

What is performance and how does it relate to what boat you buy? The bottom line is that performance is efficiency and economy, and when energy is precious, the boat you buy should have the highest energy efficiency possible.

For the Record . . .

A. P. B. A. RECORDS CURRENTLY HELD

DRIVER	DATE SET	CLASS	BOAT MODEL	TYPE OF RECORD
Ron Baker	6-11-72	FE	Viper	2 Hr. Marathon
Bill Johnson	8-19-72	FJ	Ventura	2 Hr. Marathon
Howard Pipkorn	2-18-74	FS	Ventura	Kilo
Dick Hunter	6-16-74	FJ	Ventura	1 Hr. Marathon
Jim Stagg	7-26-75	FS	Ventura	5 Mile
Ransom Tilton, Jr.	6-19-76	GP	Viper	1 Hr. Marathon
Tom Chandler	6-19-76	FS	Ventura	1 Hr. Marathon
Ransom Tilton, Jr.	7-25-76	GP	Viper	5 Mile
Jay Scheffler	9-25-76	EP	Vandal	Kilo
Jay Scheffler	9-25-76	GP	Vandal	Kilo
Todd Peterson	6-4-77	DP	Vandal	Kilo
Howard Pipkorn	6-4-77	JP	Viper	Kilo
Chris Bush	6-4-77	SE	Tiger	Kilo
Howard Pipkorn	9-16-78	SF	Tiger	Kilo
Chris Bush	9-16-78	SH	Tiger	Kilo
Wayne Weeks	10-1-78	VX	Vector	N.O.A. 1/8 Mile Straightaway (110.927 mph)

HYDROSTREAM ONE YEAR LIMITED WARRANTY TO ORIGINAL PURCHASER

HydroStream offers a limited warranty to the original purchaser on its new production hulls against defects in materials and workmanship under normal use for the period of one year from the date of delivery by an authorized HydroStream dealer. This warranty does NOT apply to gelcoat, windshields, carpeting, upholstery or hardware supplied by other manufacturers. Similarly, it does NOT apply to failure of the hull due to product abuse such as operating the boat with an engine exceeding the maximum rated horsepower or other misuses, abuses, or causes other than defective workmanship or material. Competition boats are expressly excluded from coverage under this Limited Warranty and are not warranted by HydroStream under any circumstances.

HydroStream agrees to repair or replace any defective production hull without cost to the original purchaser. No repairs shall be made without the prior consent and approval of HydroStream personnel. Any transportation, de-rigging or re-rigging costs shall be paid by the original purchaser.

THE EXPRESS WARRANTIES SET FORTH HEREIN ARE IN LIEU OF ALL OTHER WARRANTIES, EXPRESS OR IMPLIED, INCLUDING WITHOUT LIMITATION ANY WARRANTIES OF MERCHANTABILITY OR FITNESS FOR A PARTICULAR PURPOSE AND ALL SUCH OTHER WARRANTIES, TO THE EXTENT PERMITTED BY LAW, ARE HEREBY DISCLAIMED AND EXCLUDED BY HYDROSTREAM. ANY LIMITED WARRANTIES WHICH ARE NOT EXCLUDED HEREBY DUE TO OPERATION OF LAW ARE LIMITED IN DURATION TO THE DURATION OF THE EXPRESS WARRANTY PROVIDED HEREIN FOR THE PRODUCT WARRANTED.

THE REMEDIES SET FORTH ABOVE ARE THE SOLE AND EXCLUSIVE REMEDIES PROVIDED HEREUNDER AND HYDROSTREAM SHALL NOT BE LIABLE FOR ANY FURTHER LOSS, DAMAGES OR EXPENSES, INCLUDING INCIDENTAL OR CONSEQUENTIAL DAMAGES, DIRECTLY OR INDIRECTLY

ARISING FROM THE USE OF ITS PRODUCTS.

Some states do not allow limitation on how long an implied warranty lasts, so the above limitation on the duration of any implied warranties not excluded hereby due to operation of law may not apply to you. Some states do not allow the exclusion or limitation of incidental or consequential damages, so the above exclusion of incidental and consequential damages may not apply to you. This warranty gives you specific legal rights, and you may also have other rights which vary from state-to-state.

ANY OBLIGATION ON THE PART OF HYDROSTREAM TO PERFORM ACCORDING TO THE TERMS OF THIS LIMITED WARRANTY IS SPECIFICALLY CONDITIONED UPON THE ORIGINAL PURCHASER'S COMPLETION AND RETURN OF THE HYDROSTREAM OWNER WARRANTY REGISTRATION CARD WITHIN 15 DAYS OF THE DATE OF PURCHASE, FAILURE TO COMPLETE AND RETURN THE WARRANTY REGISTRATION CARD AS SPECIFIED WILL PRECLUDE COVERAGE UNDER THIS WARRANTY.

To make claim under this Limited Warranty, contact the authorized HydroStream dealer from whom the boat was purchased or, if this person is not known, write:

Customer Service Manager
HydroStream
180 First Street S.E.
New Brighton, Minnesota 55112

Provide the following information to the person contacted:

- Your name, address, and telephone number;
- Description of the product for which the claim is made, including:
 - model name and year; and
 - serial number;
- Date of purchase of product;
- Name of HydroStream dealer from whom purchased and
- Nature of product failure.

SEE YOUR LOCAL HYDROSTREAM DEALER: