

neo
for iwata



Article no. 200070 (N4500)
0.35mm flow system



Article no. 200071 (N2000)
0,5 mm Saupsystem

General use Connect the device

to a suitable source of compressed air using a hose. A variety of combinations are possible, please ask your specialist dealer. The air pressure should be between 1.0 and 2.5 bar. Depending on the nozzle strength, all common airbrush paints are suitable; the paint may need to be diluted accordingly. Please spray the gun briefly with the appropriate cleaning agent before using it for the first time.

Narrow Lines Spraying

1. Press down the main lever to start air flow.
2. Hold the airbrush gun close to the target object, ideally between 0.15 cm and 1.25 cm away.
3. Pull the main lever back slightly to start the paint flow.

The thickness of the lines can be changed by changing the distance from the gun to the target as well as by changing the lever position and thus the amount of paint.

Wide lines and backgrounds spray

1. Press down the main lever.
2. Hold the airbrush gun slightly further away from the target object, usually between 2.5cm and 15cm.
3. Pull the main lever far back so that a lot of paint sprays out of the gun and larger areas can be covered.

Air pressure

Depending on what work is to be done and what textures are desired, the air pressure is between 1.0 bar and 2.5 bar. The fluidity of the paint used and its desired spray properties must be taken into account when choosing the air pressure. As a rule, the thicker the paint used, the higher the air pressure should be.

Color preparation

For ideal working conditions with non-airbrush-ready colors, appropriate preparation of the colors including filtering the colors through a nylon sieve is recommended. Colors should only be diluted with the recommended medium. It is best to prepare the colors relatively thinly so that color gradations are easier to achieve and the nozzle does not clog as quickly. This should not only improve their quality of work, but also reduce the amount of cleaning required after use.

Cleaning the Neo BCN airbrush gun

1. Remove the paint bottle.
2. Connect a bottle of the appropriate cleaner to the suction system.
3. Spray until the cleaner leaves the nozzle completely clear.
4. Remove the cleaner bottle from the spray gun.
5. Spray air until the spray gun sprays dry air.
6. Connect the bottle with the next color.
7. Repeat the cleaning process before changing colors and before finishing your work.

Cleaning the Neo CN airbrush gun

1. Remove the remaining paint from the paint cup.
2. Rinse the cup with the appropriate cleaner.
3. Wipe the paint residue out of the cup with a paper towel.
4. Pour some cleaner into the cup and spray until the cleaner leaves the nozzle completely clear.
5. Spray air until the spray gun sprays dry air.
6. Fill the next color into the paint cup.
7. Repeat the cleaning process before changing color and before finishing work.

Cleaning the needle of the Neo BCN and Neo CN

Before cleaning the needle, you should have cleaned the airbrush gun as described in the steps previously described.

1. Unscrew the handle of the airbrush gun.
2. Loosen the needle locking screw.
3. Pull the needle out carefully and straight.
4. Place a cloth moistened with cleaner around the needle and rotate it carefully to remove the paint residue from the needle.

5. Carefully reinsert the needle into the airbrush gun until it is complete. rests on the nozzle.

Caution: The most common way to damage the needle is when it passes the main lever. If the needle can no longer be pushed any further, pull it out again and inspect the lever mechanism for correct assembly. If this is correct, insert the needle again.

6. Tighten the needle locking screw. Move the main lever back and forth to check the movement of the needle.

7. Screw the handle back onto the airbrush gun.

Before each use

Spray water or a suitable cleaning solution through the airbrush gun to ensure that the airbrush gun is working properly.

After each use

(or every time the airbrush gun gets clogged):

1. Increase air pressure.
 2. Shortly spray a little cleaner.
 3. If necessary, clean the needle.
- Cleaning the airbrush gun in this way helps keep the paint channel, needle and nozzle clean.

Periodically

To maintain the gliding ability of the needle, you should, if necessary, oil the needle and the main lever mechanism.

1. Unscrew the handle.
2. Loosen the needle locking screw.
3. Remove the needle.
4. Lubricate the needle where the rejuvenation begins with a high-quality lubricant such as Medea Super Lube.
5. Distribute the lubricant (small amount) with a soft, clean cloth so that a light lubricating film remains.
6. Carefully reinsert the needle.
7. Tighten the needle locking screw.
8. Screw the handle back onto the airbrush gun.

Replacing parts The nozzle

The nozzle can age or become damaged over time and may need to be replaced.

1. Unscrew the handle.
2. Loosen the needle locking screw.
3. Gently pull out the needle (does not need to be pulled out all the way).
4. Unscrew the needle nozzle cap and old nozzle counterclockwise using the included wrench.
5. Carefully insert the new nozzle into the airbrush body.
6. Carefully screw the nozzle tight with the included wrench. Attention: do not over-tighten!
7. Screw the needle cap and nozzle cap back on.
8. Insert the needle again until it rests against the new nozzle.
9. Tighten the needle locking screw again.
10. Screw the handle back onto the airbrush gun

Tip: Always have a spare nozzle handy in case of unforeseen accidents.

The needle

Not only is the needle very susceptible to physical damage, but it can also damage other parts of the spray gun. If the needle tip is bent too much, it will need to be straightened before pulling it out through the nozzle. Otherwise, the bent needle as it passes through the nozzle can damage it

Tip: Always have a spare needle ready in case of unforeseen accidents.

Problems and remedies:

Grainy spray pattern/spitting: First check whether the needle is bent or the nozzle is damaged. If the paint is too thick, dilute it with the appropriate medium. The air pressure or air volume of your air source may also be too low. Splashes or blobs may also be caused if the finger lever is suddenly released and the needle snaps forward. Always let the finger lever slide forward very slowly.

Also check the needle and nozzle and/or nozzle head for contamination from any dried paint.

Bubbles forming in the ink tank or pulsating: The needle or nozzle cap may be turned out too far, the head or nozzle may be loose, or the needle seal screw may be missing or defective.

safety instructions

Always spray in well-ventilated areas

Never spray paint containing solvents near open flames

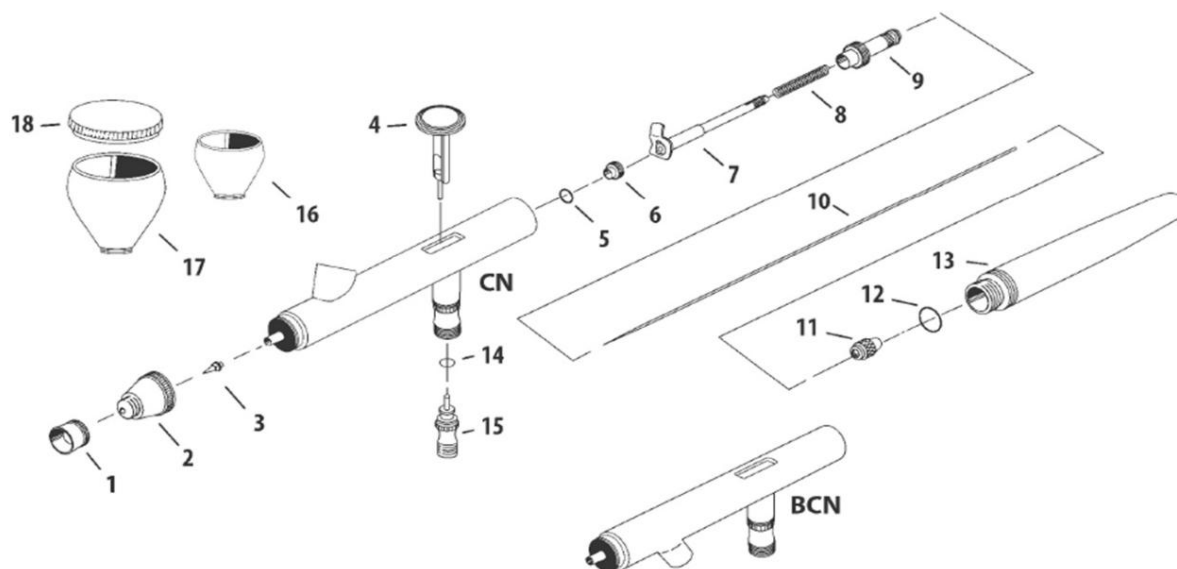
Always use a respiratory mask suitable for the respective color to filter the paint particles from the air

Use safety glasses to protect your eyes from contact with the paint.

Never spray with more than 3.0 bar

neo
for iwata

Exploded drawing



Artikel-Nr.	Iwata-Nr.	Description	Model	Ref.
200740 N		(everything)		
110 1		98532700 Needle cap 98532710	HP-CN/BCN	1
200741	N 140 1	Nozzle cap 0.35 mm 98532900	HP-CN	2
200742	N 140 2	0.5 mm 98532720 Nozzle set 0.35 mm	HP-BCN	2
200743	N 080 1	98532910 Nozzle set 0.5 mm 98532770	HP-CN	3
200744	N 080 2	Finger lever 98532730 O ring 98532740	HP-BCN	3
200746	N 100 1	Needle seal screw 98532 780	HP-CN/BCN	4
200747	N 150 1	needle guide 98532790	HP-CN/BCN	5
200748	N 125 1	needle spring	HP-CN/BCN	6
200749	N 115 1		HP-CN/BCN	7
200750	N 135 1		HP-CN/BCN	8
200751	N 170 1	98532800 Spring Guide 98532810	HP-CN/BCN	9
200752	N 075 1	Needle Set 0.35 Mm	HP-CN	10
200753	N 075 2	98532920 Needle set 0.5 mm 98532820	HP-BCN	10
200754	N 120 1	Needle locking screw	HP-CN/BCN	11
200761	N 105 1	98532830 O Ring	HP-CN/BCN	12
200762	N 090 1	98532840 Handle	HP-CN/BCN	13
200756	N 150 2	98532750 O Ring	HP-CN/BCN	14
200767	N 020 1	98532760 Air Valve Set	HP-CN/BCN	15
200763	N 070 1	98532850 Becher 1/4 Oz.	HP-CN	16
200764	N 070 4	98532860 Becher 1/2 Oz.	HP-CN	17
200725	I 470 1	Bottle 28ml	HB-BCN	
200766	N 095 4	98532880 Lid cup	HP-CN	18

Import and distribution

**Createx Handels GmbH
Kirchhoffstraße 7
D-24568 Kaltenkirchen**

**Tel.: +49 (0) 4191 88277 e-^{*} Fax.: +49 (0) 85912
mail: info@createx.de
www.createx.de**

**You can find our complete delivery program at www.createx.de We
only supply specialist retailers**

11.11.2016