



2023

HARDWARE INTERNATIONAL

www.HardwareInternational.com



Coastal
BRONZE

A Coastal Bronze Product Line

www.CoastalHardware.com

Bronze Finish Options

Available for SKU's starting with: 01 to 04

Available for SKU's starting with: 05 to 17

Platinum (Base) | Espresso (Accent) | **(PE)**



Champagne (Base) | Espresso (Accent) | **(CE)**



Espresso (Base) | Platinum (Accent) | **(EP)**



Espresso (Base) | Champagne (Accent) | **(EC)**



Espresso | **(E)**



Champagne | **(C)**



Platinum | **(P)**



See Page 18 for our Appliance Pull Collection

Brass Finish Options

All Single Tone products are also available in Brass in the finishes below, SKU's starting with: 05 to 17

Brass Finishes are not available for Two-Tone Products (01 to 04)

Satin Nickel | **(SN)**



Polished Nickel | **(PN)**



Polished Chrome | **(PC)**



New 2022 Finishes

Satin Brass | **(SB)**



Black | **(BL)**



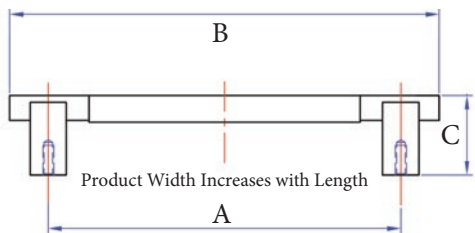
See our Coastal Bronze Combined Price List for Pricing & Terms

P: 1-877-227-6603 | **E:** Orders@CoastalBronze.com | **F:** 1-888-778-7889

EDGE TWO-TONE COLLECTION



Contemporary Square Base Handle



A	B	C
3"	3-3/4"	1-3/8"
4"	5-1/4"	1-3/8"
3-3/4"	5-1/8"	1-3/8"
6"	8"	1-3/8"
9"	10-7/8"	1-1/2"
12"	14-3/8"	1-1/2"

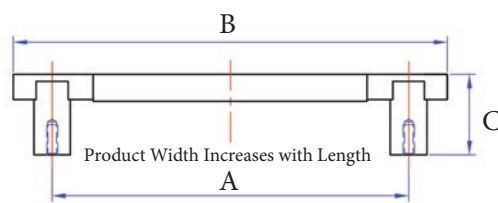
Part #	Finishes	Size	Size mm
01-103	PE/CE/EP/EC	3"	76mm
01-104	PE/CE/EP/EC	4"	102mm
01-196	PE/CE/EP/EC	3-3/4"	96mm
01-106	PE/CE/EP/EC	6"	153mm
01-109	PE/CE/EP/EC	9"	229mm
01-112	PE/CE/EP/EC	12"	305mm

12" Pulls Available in Back to Back

Contemporary Round Base Handle

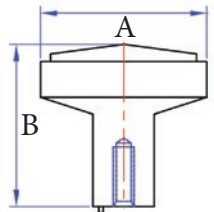
Part #	Finishes	Size	Size mm
01-203	PE/CE/EP/EC	3"	76mm
01-204	PE/CE/EP/EC	4"	102mm
01-296	PE/CE/EP/EC	3-3/4"	96mm
01-206	PE/CE/EP/EC	6"	153mm
01-209	PE/CE/EP/EC	9"	229mm
01-212	PE/CE/EP/EC	12"	305mm

A	B	C
3"	4-3/8"	1-3/8"
4"	5-5/8"	1-3/8"
3-3/4"	5-3/8"	1-3/8"
6"	7-3/8"	1-3/8"
9"	11-1/4"	1-1/2"
12"	14-3/8"	1-1/2"



12" Pulls Available in Back to Back

Contemporary Square Pyramid Knob



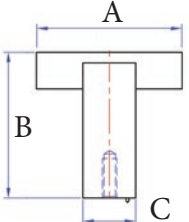
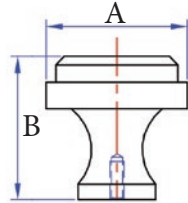
A	B
1"	1-3/8"
1-1/4"	1-3/8"
1-1/2"	1-3/8"

Part #	Finishes	Size	Size mm
01-501	PE/CE/EP/EC	1"	26mm
01-502	PE/CE/EP/EC	1-1/4"	32mm
01-503	PE/CE/EP/EC	1-1/2"	38mm

Contemporary Round Knob

Part #	Finishes	Size	Size mm
01-601	PE/CE/EP/EC	1"	26mm
01-602	PE/CE/EP/EC	1-1/4"	32mm
01-603	PE/CE/EP/EC	1-1/2"	38mm

A	B
1"	1"
1-1/4"	1-1/4"
1-1/2"	1-1/2"



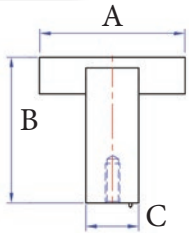
A	B	C
1-1/2"	1-1/2"	1/2"

Part #	Finishes	Size	Size mm
01-701	PE/CE/EP/EC	1-1/2"	38mm

Contemporary T-Knob Round Base

Part #	Finishes	Size	Size mm
01-801	PE/CE/EP/EC	1-1/2"	38mm

A	B	C
1-1/2"	1-1/2"	5/8"



Add any finish to the end of any Part #

All Contemporary Two-Tone Collections available in all combinations shown below

Top Finish - Accent Finish **Bottom Finish** - Base Finish



(PE)



(CE)



(EP)



(EC)

CURVE TWO-TONE COLLECTION

04-601-EP



04-601-PE



04-601-EC



04-701-EC



04-702-CE



04-703-EP



04-501-PE



04-501-CE



04-501-EP



04-112-CE



04-109-EP



04-106-EC



04-104-EP



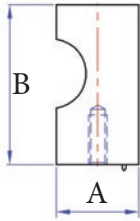
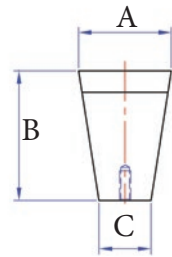
04-103-CE



Contemporary Cone Knob

Part #	Finishes	Size	Size mm
04-701	PE/CE/EP/EC	7/8"	22mm
04-702	PE/CE/EP/EC	1-1/8"	29mm
04-703	PE/CE/EP/EC	1-3/8"	36mm

A	B	C
7/8"	1-1/8"	3/8"
1-1/8"	1-1/8"	5/8"
1-3/8"	1-1/4"	5/8"



A	B
3/4"	1-1/2"

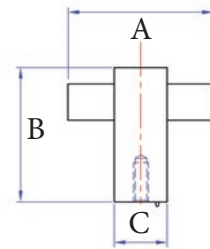
Contemporary Finger Pull

Part #	Finishes	Size	Size mm
04-601	PE/CE/EP/EC	3/4"	19mm

Contemporary Round T-Knob

Part #	Finishes	Size	Size mm
04-501	PE/CE/EP/EC	1-1/2"	38mm

A	B	C
1-1/2"	1-1/2"	1/2"

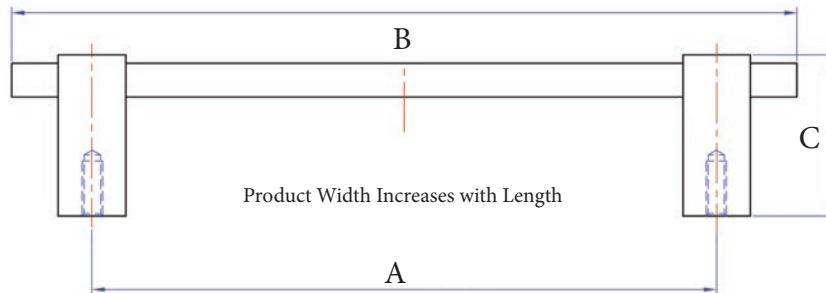


Contemporary Bar Handle

A	B	C
3"	3-5/8"	1-1/2"
4"	5"	1-1/2"
3-3/4"	4-3/4"	1-1/2"
6"	6-3/4"	1-1/2"
9"	11"	1-5/8"
12"	14-1/2"	1-5/8"

Part #	Finishes	Size	Size mm
04-103	PE/CE/EP/EC	3"	76mm
04-104	PE/CE/EP/EC	4"	102mm
04-196	PE/CE/EP/EC	3-3/4"	96mm
04-106	PE/CE/EP/EC	6"	153mm
04-109	PE/CE/EP/EC	9"	229mm
04-112	PE/CE/EP/EC	12"	305mm

12" Pulls Available in Back to Back



Add any finish to the end of any Part #

All Contemporary Two-Tone Collections available in all combinations shown below

Top Finish - Accent Finish

Bottom Finish - Base Finish



(PE)



(CE)



(EP)



(EC)

ANGLE TWO-TONE COLLECTION

02-112-EP



02-109-CE



02-106-EC



02-104-PE



02-103-CE



02-501-EC



03-206-PE



03-204-EC



03-203-CE



03-502-EC



02-503-EP



02-502-CE



03-502-CE



02-603-EC



02-601-EP



03-103-CE



03-104-EP



03-502-EP



02-602-PE



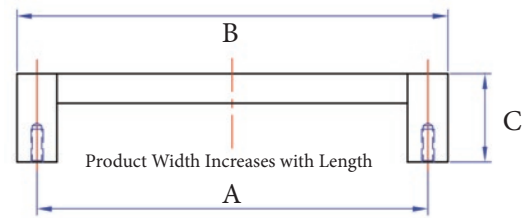
03-106-PE



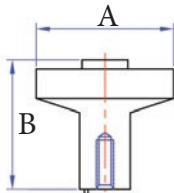
Contemporary Banded Handle

Part #	Finishes	Size	Size mm
02-103	PE/CE/EP/EC	3"	76mm
02-104	PE/CE/EP/EC	4"	102mm
02-196	PE/CE/EP/EC	3-3/4"	96mm
02-106	PE/CE/EP/EC	6"	153mm
02-109	PE/CE/EP/EC	9"	229mm
02-112	PE/CE/EP/EC	12"	305mm

A	B	C
3"	3-1/2"	1-3/8"
4"	4-1/2"	1-3/8"
3-3/4"	4-3/8"	1-3/8"
6"	6-3/4"	1-1/2"
9"	9-3/4"	1-1/2"
12"	13"	1-5/8"



12" Pulls Available in Back to Back



A	B
1"	1-1/8"
1-1/4"	1-1/8"
1-1/2"	1-1/3"

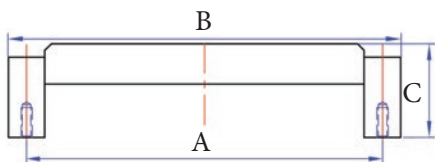
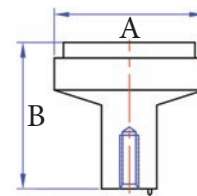
Contemporary Banded Knob

Part #	Finishes	Size	Size mm
02-501	PE/CE/EP/EC	1"	26mm
02-502	PE/CE/EP/EC	1-1/4"	32mm
02-503	PE/CE/EP/EC	1-1/2"	38mm

Contemporary Square Flat Knob

Part #	Finishes	Size	Size mm
02-601	PE/CE/EP/EC	1"	26mm
02-602	PE/CE/EP/EC	1-1/4"	32mm
02-603	PE/CE/EP/EC	1-1/2"	38mm

A	B
1"	1-1/8"
1-1/4"	1-1/4"
1-1/2"	1-1/4"



A	B	C
3"	3-3/8"	1"
4"	4-1/4"	1-1/8"
3-3/4"	4-1/8"	1-1/8"
6"	6-1/2"	1-1/8"

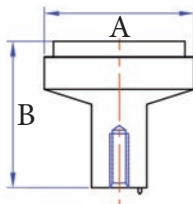
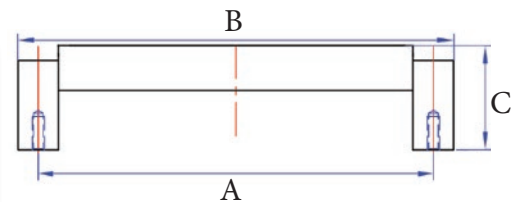
Contemporary Bevel Top Handle

Part #	Finishes	Size	Size mm
03-103	PE/CE/EP/EC	3"	76mm
03-104	PE/CE/EP/EC	4"	102mm
03-196	PE/CE/EP/EC	3-3/4"	96mm
03-106	PE/CE/EP/EC	6"	153mm

Contemporary Flat Top Handle

Part #	Finishes	Size	Size mm
03-203	PE/CE/EP/EC	3"	76mm
03-204	PE/CE/EP/EC	4"	102mm
03-296	PE/CE/EP/EC	3-3/4"	96mm
03-206	PE/CE/EP/EC	6"	153mm

A	B	C
3"	3-3/8"	1"
4"	4-1/4"	1-1/8"
3-3/4"	4-1/8"	1-1/8"
6"	6-1/2"	1-1/8"



A	B
1-1/2" x 3/4"	1-1/2"

Contemporary Rectangular Knob

Part #	Finishes	Size	Size mm
03-502	PE/CE/EP/EC	1-1/2"	38mm

Add any finish to the end of any Part #

All Contemporary Two-Tone Collections available in all combinations shown below

Top Finish - Accent Finish

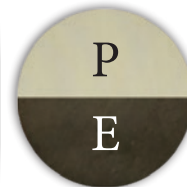
Bottom Finish - Base Finish



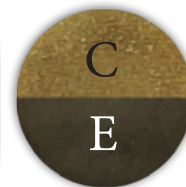
(PE)



(CE)



(EP)



(EC)

NATURAL COLLECTION



10-108-C



10-105-E



10-103-P



11-109-P



11-106-E



11-104-C



12-108-P



12-105-C



12-103-E



11-502-E

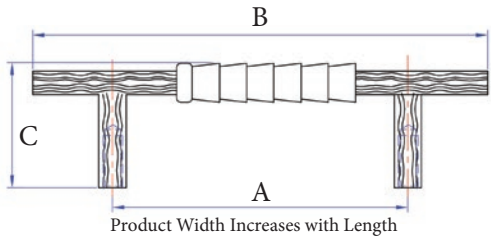


11-503-P



11-501-C

Available in All Bronze & Brass Finishes - See Page 2



A	B	C
3"	4-3/8"	1-1/4"
3-3/4"	5-3/8"	1-1/4"
5"	6-3/8"	1-1/2"
8"	10"	1-7/8"
12"	14-5/8"	2-1/4"

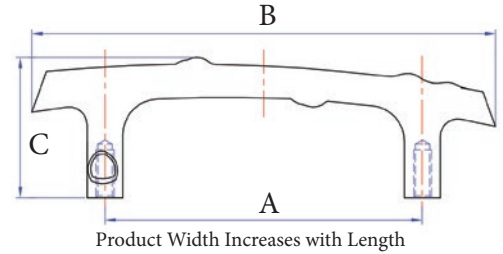
Ridged Handle

Part #	Finishes	Size	Size mm
10-103	P/C/E	3"	76mm
10-196	P/C/E	3-3/4"	96mm
10-105	P/C/E	5"	127mm
10-108	P/C/E	8"	203mm
10-112	P/C/E	12"	305mm

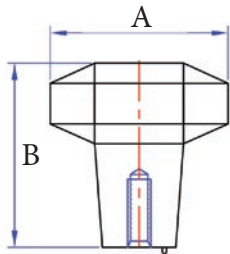
Twig Handle

Part #	Finishes	Size	Size mm
12-103	P/C/E	3"	76mm
12-196	P/C/E	3-3/4"	96mm
12-105	P/C/E	5"	127mm
12-108	P/C/E	8"	203mm
12-112	P/C/E	12"	305mm

A	B	C
3"	4-5/8"	1-3/8"
3-3/4"	5-1/2"	1-3/8"
5"	7-7/8"	1-7/8"
8"	10-5/8"	2"
12"	15-3/8"	3"



12" Pulls Available in Back to Back



Octagon Knob

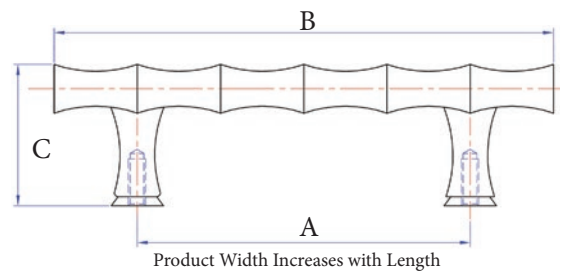
A	B
1"	1-1/8"
1-1/4"	1-1/8"
1-1/2"	1-3/8"

Part #	Finishes	Size	Size mm
11-501	P/C/E	1"	26mm
11-502	P/C/E	1-1/4"	32mm
11-503	P/C/E	1-1/2"	38mm

Bamboo Handle

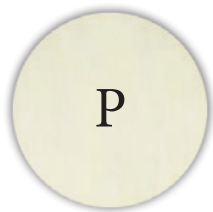
Part #	Finishes	Size	Size mm
11-103	P/C/E	3"	76mm
11-104	P/C/E	4"	102mm
11-196	P/C/E	3-3/4"	96mm
11-106	P/C/E	6"	153mm
11-109	P/C/E	9"	229mm
11-112	P/C/E	12"	305mm

A	B	C
3"	4-1/4"	1-1/2"
4"	5-5/8"	1-5/8"
3-3/4"	5-3/8"	1-5/8"
6"	8-1/2"	1-7/8"
9"	11-3/8"	2"
12"	15"	2-1/8"



12" Pulls Available in Back to Back

Add any finish to the end of any SKU - All bronze products available in finishes below



RENAISSANCE COLLECTION

07-502-C



07-601-P



07-602-E



07-603-C



07-501-P



08-103-E



08-104-C



08-106-P



08-109-E



08-112-C



07-112-P



07-109-C



07-106-E



07-104-C



07-103-E

08-502-P



08-501-E



08-503-C



08-603-P



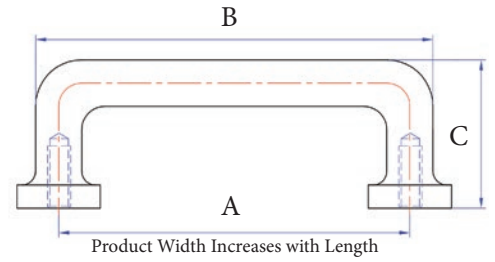
08-602-E

Available in All Bronze & Brass Finishes - See Page 2

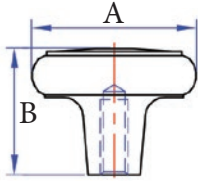
Flared Base Round Handle

Part #	Finishes	Size	Size mm
08-103	P/C/E	3"	76mm
08-104	P/C/E	4"	102mm
08-196	P/C/E	3-3/4"	96mm
08-106	P/C/E	6"	153mm
08-109	P/C/E	9"	229mm
08-112	P/C/E	12"	305mm

A	B	C
3"	3-5/8"	1-1/8"
4"	4-3/4"	1-1/4"
3-3/4"	4-1/2"	1-1/8"
6"	7"	1-3/8"
9"	10-1/4"	1-5/8"
12"	13-3/8"	2"



12" Pulls Available in Back to Back



A	B
1"	1-1/4"
1-1/4"	1-1/4"
1-1/2"	1-1/4"

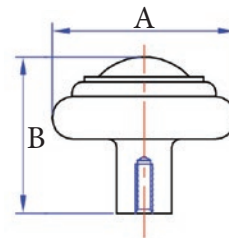
Stepped Round Knob

Part #	Finishes	Size	Size mm
08-501	P/C/E	1"	26mm
08-502	P/C/E	1-1/4"	32mm
08-503	P/C/E	1-1/2"	38mm

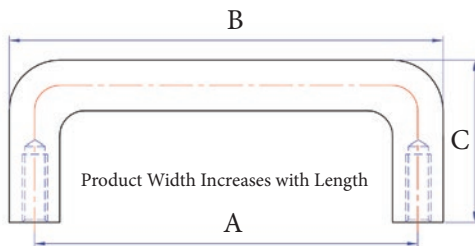
Button Round Knob

Part #	Finishes	Size	Size mm
08-602	P/C/E	1-1/4"	32mm
08-603	P/C/E	1-1/2"	38mm

A	B
1-1/4"	1-1/4"
1-1/2"	1-1/4"



Round Handle



A	B	C
3"	3-3/8"	1-1/4"
4"	4-3/8"	1-1/4"
3-3/4"	4-1/8"	1-1/8"
6"	6-3/8"	1-3/8"
9"	9-1/2"	1-5/8"
12"	12-5/8"	2-1/8"

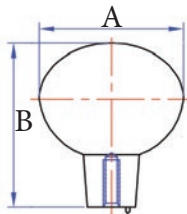
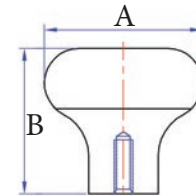
Part #	Finishes	Size	Size mm
07-103	P/C/E	3"	76mm
07-104	P/C/E	4"	102mm
07-196	P/C/E	3-3/4"	96mm
07-106	P/C/E	6"	153mm
07-109	P/C/E	9"	229mm
07-112	P/C/E	12"	305mm

12" Pulls Available in Back to Back

Mushroom Knob

Part #	Finishes	Size	Size mm
07-601	P/C/E	1"	26mm
07-602	P/C/E	1-1/4"	32mm
07-603	P/C/E	1-1/2"	38mm

A	B
1"	1-1/8"
1-1/4"	1-1/8"
1-1/2"	1-1/4"

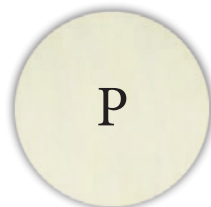


A	B
1-1/8" x 7/8"	1-1/2"
1-1/4" x 1"	1-1/2"

Egg Knob

Part #	Finishes	Size	Size mm
07-501	P/C/E	1-1/8"	29mm
07-502	P/C/E	1-1/4"	32mm

Add any finish to the end of any SKU - All bronze products available in finishes below



DECO COLLECTION

13-502-C



13-602-C



14-103-E



13-602-E



14-102-P



13-503-E



13-603-P



14-115-C



13-502-P



16-502-E



16-501-C



13-115-E



16-502-P



16-501-E



13-102-C



16-502-C



16-501-P



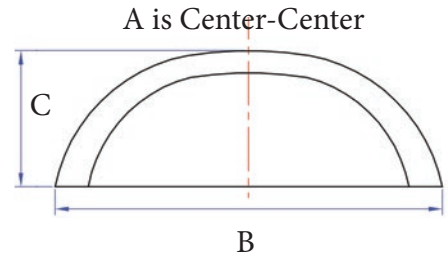
13-103-P



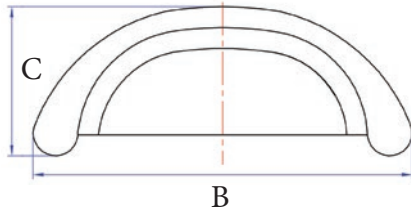
Circular Bin Pull

Part #	Finishes	Size	Size mm
16-501	P/C/E	3-1/2"	89mm

A	B	C
2-3/8"	3-1/2"	1-1/2"



Flat Round Bin Pull



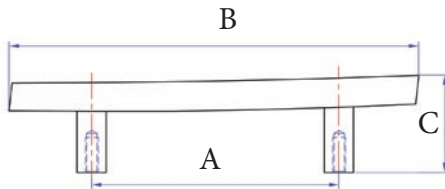
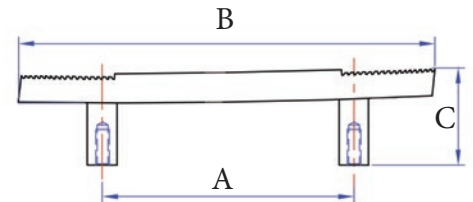
A	B	C
3"	4-1/4"	1-1/2"

Part #	Finishes	Size	Size mm
16-502	P/C/E	4-1/4"	114mm

Ridged Handle

Part #	Finishes	Size	Size mm
14-115	P/C/E	1-1/2"	38mm
14-102	P/C/E	2"	51mm
14-103	P/C/E	3"	76mm

A	B	C
1-1/2"	3"	1-1/8"
2"	4"	1-1/4"
3"	6"	1-3/8"



Textured Handle

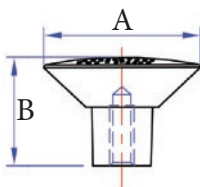
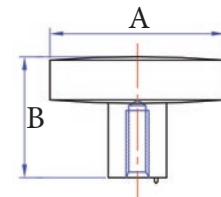
Part #	Finishes	Size	Size mm
13-115	P/C/E	1-1/2"	38mm
13-102	P/C/E	2"	51mm
13-103	P/C/E	3"	76mm

A	B	C
1-1/2"	3"	1"
2"	3-7/8"	1-1/4"
3"	5-7/8"	1-1/4"

Textured Square Knob

Part #	Finishes	Size	Size mm
13-502	P/C/E	1-1/4"	32mm
13-503	P/C/E	1-1/2"	38mm

A	B
1-1/4"	7/8"
1-1/2"	1-1/8"



Textured Round Knob

A	B
1-1/4"	1"
1-1/2"	1-1/8"

Part #	Finishes	Size	Size mm
13-602	P/C/E	1-1/4"	32mm
13-603	P/C/E	1-1/2"	38mm

Add any finish to the end of any SKU - All bronze products available in finishes below



MISSION COLLECTION

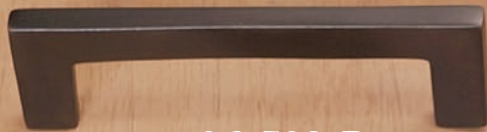
06-109-P



06-106-C



06-104-E



06-503-P



06-502-C



06-502-E



05-109-E



05-106-C



05-104-P



05-503-C



05-501-P



09-502-E



09-108-E



05-501-E



09-501-P



09-501-C



09-105-P

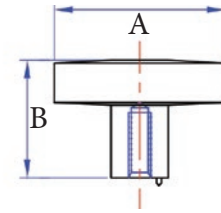


09-196-C

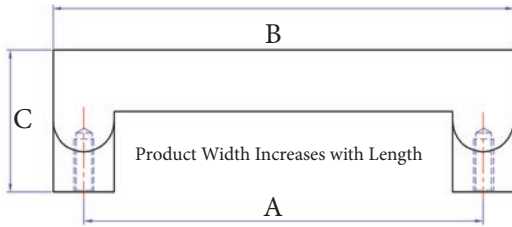
Flat Square Knob

Part #	Finishes	Size	Size mm
05-501	P/C/E	1"	26mm
05-502	P/C/E	1-1/4"	32mm
05-503	P/C/E	1-1/2"	38mm

A	B
1"	1-1/8"
1-1/4"	1-1/8"
1-1/2"	1-1/8"



Flared Flat Handle



A	B	C
3"	3-1/2"	1-3/8"
4"	4-1/2"	1-1/4"
3-3/4"	4-3/8"	1-1/4"
6"	6-1/2"	1-1/2"
9"	9-5/8"	1-5/8"
12"	12-5/8"	1-5/8"

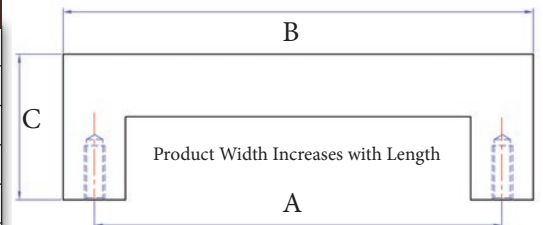
Part #	Finishes	Size	Size mm
05-103	P/C/E	3"	76mm
05-104	P/C/E	4"	102mm
05-196	P/C/E	3-3/4"	96mm
05-106	P/C/E	6"	153mm
05-109	P/C/E	9"	229mm
05-112	P/C/E	12"	305mm

12" Pulls Available in Back to Back

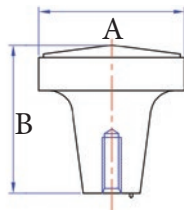
Flat Handle

Part #	Finishes	Size	Size mm
06-103	P/C/E	3"	76mm
06-104	P/C/E	4"	102mm
06-196	P/C/E	3-3/4"	96mm
06-106	P/C/E	6"	153mm
06-109	P/C/E	9"	229mm
06-112	P/C/E	12"	305mm

A	B	C
3"	3-3/8"	1-3/8"
4"	4-1/2"	1-3/8"
3-3/4"	4-1/2"	1-3/8"
6"	6-1/2"	1-3/8"
9"	9-1/2"	1-5/8"
12"	12-1/2"	1-5/8"



12" Pulls Available in Back to Back



A	B
1"	1"
1-1/4"	1"
1-1/2"	1-1/8"

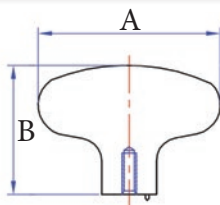
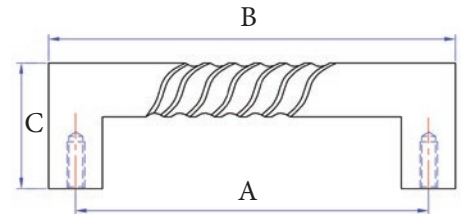
Pyramid Knob

Part #	Finishes	Size	Size mm
06-501	P/C/E	1"	26mm
06-502	P/C/E	1-1/4"	32mm
06-503	P/C/E	1-1/2"	38mm

Twist Handle

Part #	Finishes	Size	Size mm
09-103	P/C/E	3"	76mm
09-196	P/C/E	3-3/4"	96mm
09-105	P/C/E	5"	127mm
09-108	P/C/E	8"	203mm
09-112	P/C/E	12"	305mm

A	B	C
3"	3-3/8"	1-1/4"
3-3/4"	4-1/8"	1-1/4"
5"	5-3/8"	1-1/2"
8"	8-3/8"	1-5/8"
12"	12-3/8"	1-3/4"

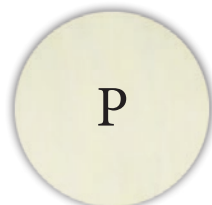


A	B
1-3/8" x 7/8"	1-1/4"
1-7/8" x 1"	1-1/4"

Oblong Knob

Part #	Finishes	Size	Size mm
09-501	P/C/E	1-3/8"	35mm
09-502	P/C/E	1-7/8"	48mm

Add any finish to the end of any SKU - All bronze products available in finishes below





HARDWARE
INTERNATIONAL





HARDWARE
INTERNATIONAL

Bronze Appliance Pulls

02-118-EC-A

02-118-CE-A

02-118-PE-A

02-118-EP-A



Available in Bronze Finishes Only - See Page 2

Dimensions: 18-5/8" L x 3/4" W

Projection & Grip: 2-3/8" H - 1-1/2" H

Center-Center: 18" - 457mm

Screw: 1/4-20 | Truss Head

P: 1-877-227-6603 | **E:** Orders@CoastalBronze.com | **F:** 1-888-778-7889

05-118-E-A



05-118-C-A



05-118-P-A



05-118-BL-A



Available in All Bronze & Brass Finishes - See Page 2

Dimensions: 18-7/8" L x 5/8" W

Projection & Grip: 2-3/8" H - 1-5/8" H

Center-Center: 18" - 457mm

Screw: 1/4-20 | Truss Head

P: 1-877-227-6603 | **E:** Orders@CoastalBronze.com | **F:** 1-888-778-7889

06-118-E-A

06-118-C-A

06-118-P-A

06-118-BL-A



Available in All Bronze & Brass Finishes - See Page 2

Dimensions: 19" L x 5/8" W

Projection & Grip: 2-1/2" H - 1-5/8" H

Center-Center: 18" - 457mm

Screw: 1/4-20 | Truss Head

P: 1-877-227-6603 | **E:** Orders@CoastalBronze.com | **F:** 1-888-778-7889

08-118-E-A



08-118-C-A



08-118-P-A



08-118-BL-A



Available in All Bronze & Brass Finishes - See Page 2

Dimensions: 19-1/2" L x 3/4" W

Projection & Grip: 2-1/4" H - 1-5/8" H

Center-Center: 18" - 457mm

Screw: 1/4-20 | Truss Head

P: 1-877-227-6603 | **E:** Orders@CoastalBronze.com | **F:** 1-888-778-7889

15-118-E-A

15-118-C-A

15-118-P-A

15-118-BL-A



Available in All Bronze & Brass Finishes - See Page 2

Dimensions: 19-1/4" L x 3/4" W

Projection & Grip: 2-3/8" H - 1-5/8" H

Center-Center: 18" - 457mm

Screw: 1/4-20 | Truss Head

P: 1-877-227-6603 | **E:** Orders@CoastalBronze.com | **F:** 1-888-778-7889

17-118-E-A



17-118-C-A



17-118-P-A



17-118-BL-A



Available in All Bronze & Brass Finishes - See Page 2

Dimensions: 20" L x 1-1/2" W

Projection & Grip: 1-5/8" H - 1-1/4" H

Center-Center: 18" - 457mm

Screw: 1/4-20 | Truss Head

P: 1-877-227-6603 | **E:** Orders@CoastalBronze.com | **F:** 1-888-778-7889