



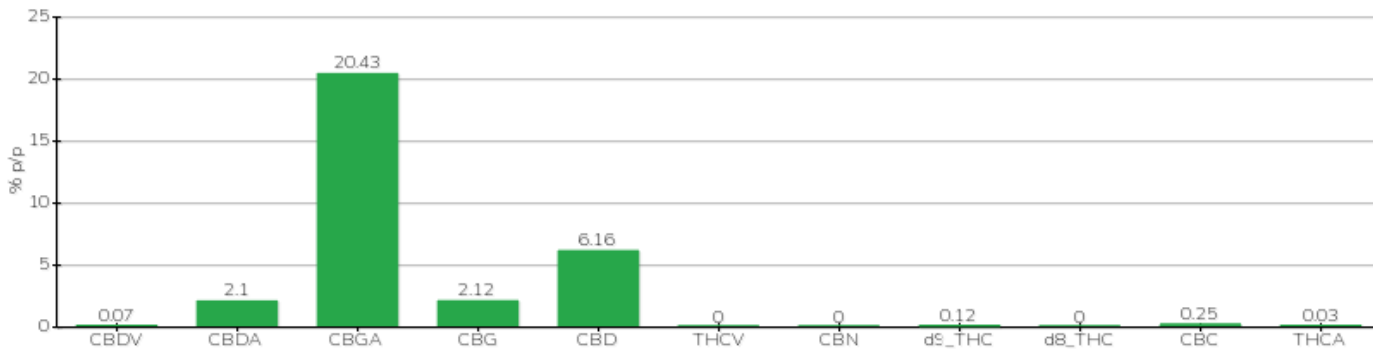
## TECHNICAL REPORT

<b>Etichetta</b>	Nepalese Charas
<b>Tipologia campione</b>	semilavorato
<b>varietà</b>	NA
<b>N. Cartellino</b>	NA
<b>Campionamento</b>	a cura del cliente

### Note

Parametro	% p/p	Metodo
CBDV	0.07%	HPLC-UV
CBDA	2.10%	HPLC-UV
CBGA	20.43%	HPLC-UV
CBG	2.12%	HPLC-UV
CBD	6.16%	HPLC-UV
THCV	<0.01%	HPLC-UV
CBN	<0.01%	HPLC-UV
d9_THC	0.12%	HPLC-UV
d8_THC	<0.01%	HPLC-UV
CBC	0.25%	HPLC-UV
THCA	0.03%	HPLC-UV
<b>CBD TOTALE</b>	<b>8.00%</b>	<b>CALCOLATO</b>
<b>CBG TOTALE</b>	<b>20.06%</b>	<b>CALCOLATO</b>
<b>THC TOTALE</b>	<b>0.14%</b>	<b>CALCOLATO</b>

CAMPIONE ANALIZZATO: NA(3.00gr)



Pineto