

# HYDROPATH



**HYDROPATH Technology** | The home of *HydroFLOW*®

**HYDROPATH provides the ultimate in water care technology to global business, industry and consumers – reducing limescale, preventing biofouling and offering chemical-free solutions with a difference.**

**We do this by applying the very best in scientific understanding and discovery, leading product innovation, proven application and unrivalled service, tailored to our customers.**

With almost 25 years of experience, we manufacture electronic water conditioners for the prevention and removal of hard limescale, the treatment of bacteria and algae, and the improvement of filtration.

Our technology, manufactured in the UK, offers cost savings and environmental benefits for a wide range of applications, from the HVAC and swimming pool industries to the agricultural sector and heavy industry.

HYDROPATH's range of water conditioners operate by use of a unique, chemical-free, patented ferrite technology that applies an electrical field to the pipe and the water contained within.

The units are easy to install, require no cutting of pipework and are suitable for all pipe materials. Units are available to treat pipes up to 200mm as standard, and larger

units suitable for pipes from 220mm to several meters in diameter are available in our "custom range". Limescale reduces the efficiency and longevity of boilers, increasing energy costs and incurring a cost to the environment too.

Limescale forms when there is a pressure or temperature change, causing it to adhere to the boiler's heat exchanger or heating element. HYDROPATH technology works by emitting a varying electric field into the water, causing limescale to form in suspension, which is then washed away with the flow.

In addition to protecting against limescale, HYDROPATH provides units that improve water quality by controlling biofouling and improving filtration. This ensures that heating surfaces remain free of biofouling and maintain their efficiency, and that water and energy wasted due to backwash are minimised.



**COMMERCIAL**



LIMESCALE



## **C RANGE**

Designed for limescale protection for heating, ventilation and plumbing services in offices, schools, hotels and other commercial buildings.

The c Range is designed to address the effects of new and existing hard limescale encrustation on commercial boilers, heat exchangers and cooling systems. The applied signal can travel to protect the cold services as well, meaning other equipment is protected and deposits on sinks, taps etc, are easier to clean.

 UP TO 200MM

- New Limescale
- Existing Limescale
- Suitable for commercial boilers, heat exchangers and cooling systems
- Standard units available for pipes up to 200mm in outside diameter



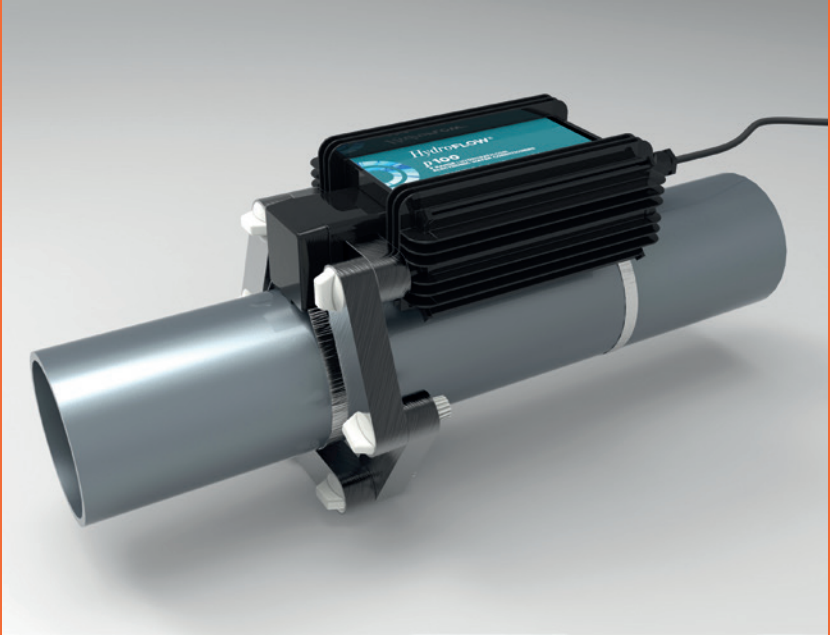
BIOFOULING



LIMESCALE



FLOCCULATION



## **p AQUAKLEAR**

Designed to improve water quality in both swimming pools and cooling towers. Flocculating material improves filtration and reduces backwashing, leading to lower energy usage, water and effluent charges, and (in pools) also reduces chloramine levels and the associated smell. Preventing and removing limescale on heat exchangers and the tower itself can reduce maintenance costs and improve their overall efficiency.

 UP TO 200MM

- Improved Filtration
- Biofouling Control
- Suitable for commercial pools and cooling towers
- Standard units available for pipes up to 200mm in outside diameter



**COMMERCIAL**



LIMESCALE



STEAM



## **S RANGE**

Designed specifically to deal with limescale in high pressure steam boilers. The s Range enables the use of untreated water for the steam boiler - straight from the mains or the bore hole. Limescale on boiler tubes very quickly leads to a large drop in efficiency and requires the use of expensive and onerous chemical treatment.

The s Range is designed to address the effects of new and existing hard limescale encrustation and is suitable for high pressure steam boilers. Standard units are available up to 120mm in diameter.

 UP TO 120MM

- New Limescale
- Existing Limescale
- Suitable for high pressure steam boilers
- Units available for pipes up to 120mm in outside diameter



LIMESCALE



BIOFOULING



FLOCCULATION

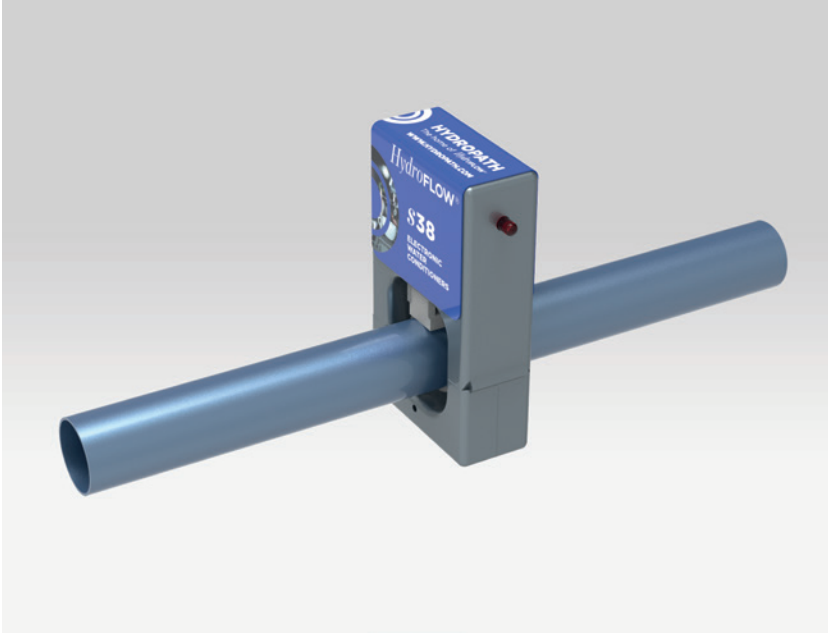


## **i** INDUSTRIAL RANGE

Designed for challenging applications in industrial environments. The i Range provides a range of water treatment benefits, including limescale protection, flocculation and biofouling control. The Industrial Range is more powerful than the standard commercial unit. It features an integrated power supply, is fully waterproofed, and is designed for ease of connection to mains power and building management systems.

 UP TO 200MM

- Water Quality
- Limescale
- Higher power for challenging industrial environments
- Standard units available for pipes up to 200mm in outside diameter



## **S38**

The s38 is used in low-pressure steam boilers, steam ovens, steam rooms, humidifiers and evaporators. It protects these appliances from limescale build-up and removes existing limescale.

The s38 fits around pipes of up to 38mm, is suitable for all types of pipe material and works independent of flow rate.

 UP TO 38MM

- New Limescale
- Old Limescale
- Suitable for small commercial applications
- Fits on pipe size up to 38mm outside diameter





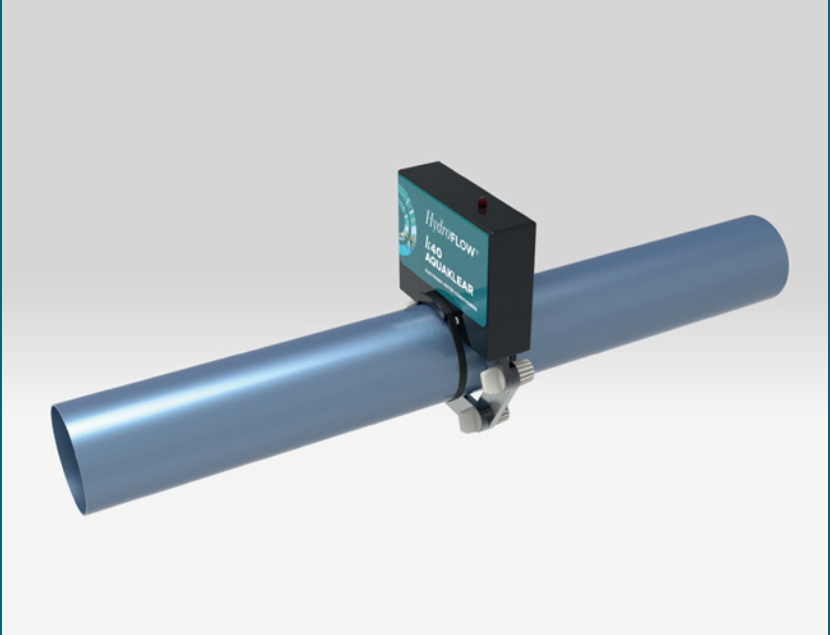
LIMESCALE



BIOFOULING



FLOCCULATION



## **k40 AQUAKLEAR**

The k40 is designed to improve the water quality of pools, hot tubs, spas, water features, and other related applications. Reducing bacterial levels and improving filtration in pools etc. leads to clearer and more pleasant water and a reduction in maintenance regimes and associated costs and a reduction in backwash.

The k40 has a range of benefits designed to make your system cheaper and easier to maintain, and more pleasant to use.

 UP TO 63MM

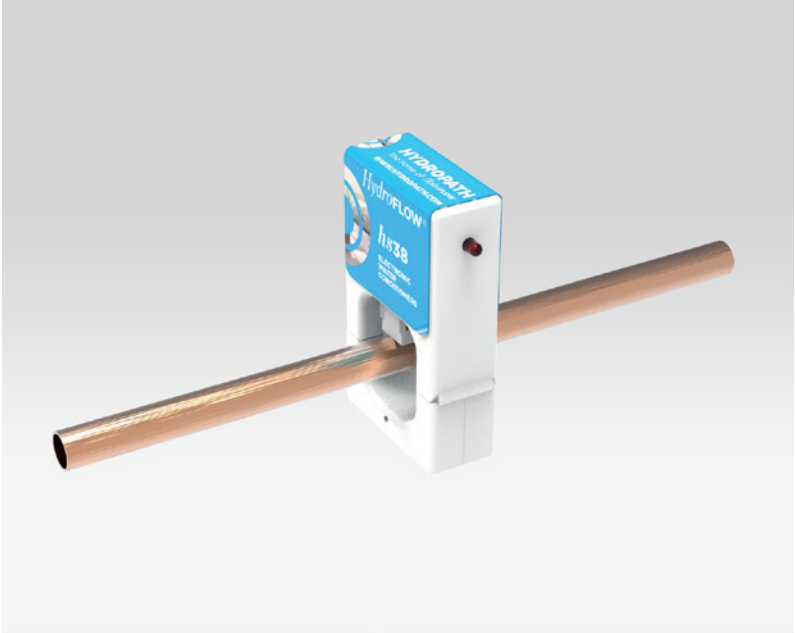
- Water Quality
- Chlorine Reduction
- Small pools and spas
- Fits on pipe size up to 63mm outside diameter



DOMESTIC



LIMESCALE



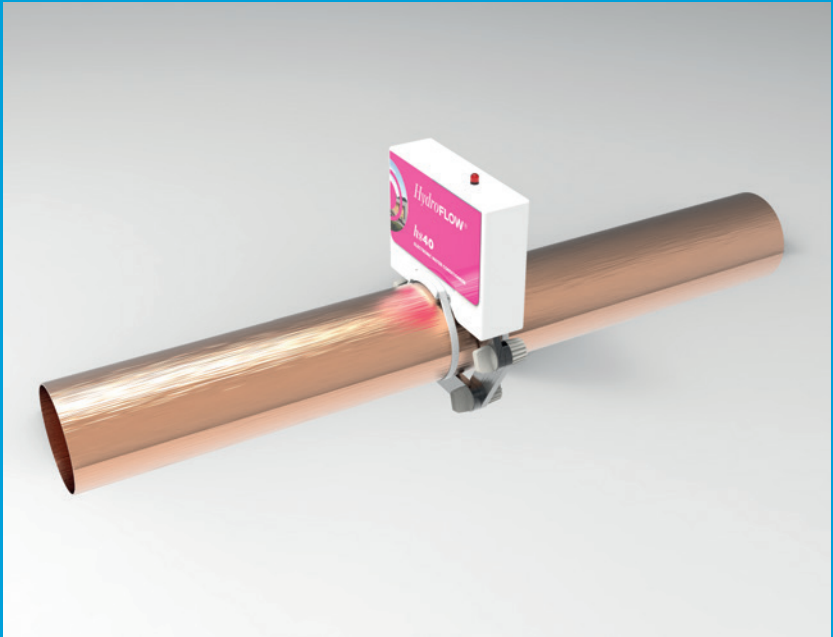
## hs38

Designed to protect domestic plumbing systems against limescale build up. The HydroFLOW hs38 is suitable for houses of up to four bedrooms, and for combination boilers as well as vented and unvented cylinders.

The hs38 is designed to protect against hard limescale deposits in domestic pipelines and on heating elements and surfaces, to protect appliances such as dishwashers and washing machines, and to make limescale-stained taps, sinks and bathtubs easier to clean.

 UP TO 38MM

- New Limescale
- Existing limescale
- Suitable for the average two to four-bedroom sized home
- Fits on pipe size up to 38mm outside diameter



## hs40

The HydroFLOW hs40 is designed for domestic systems and is especially suitable for multi bath-roomed homes. Similar to its cousin the hs38, the larger and more powerful hs40 is designed to offer a chemical-free alternative in addressing the effects of new and existing hard limescale encrustation on plumbing systems and the impact that this hard limescale has on the efficiency of and longevity of boilers and their increased energy usage.

The unit can fit around a pipe of any material with no plumbing required.

 UP TO 63MM

- New Limescale
- Existing limescale
- Suitable for the average two to four-bedroom sized home
- Fits on pipe size up to 63mm outside diameter



**CUSTOM**



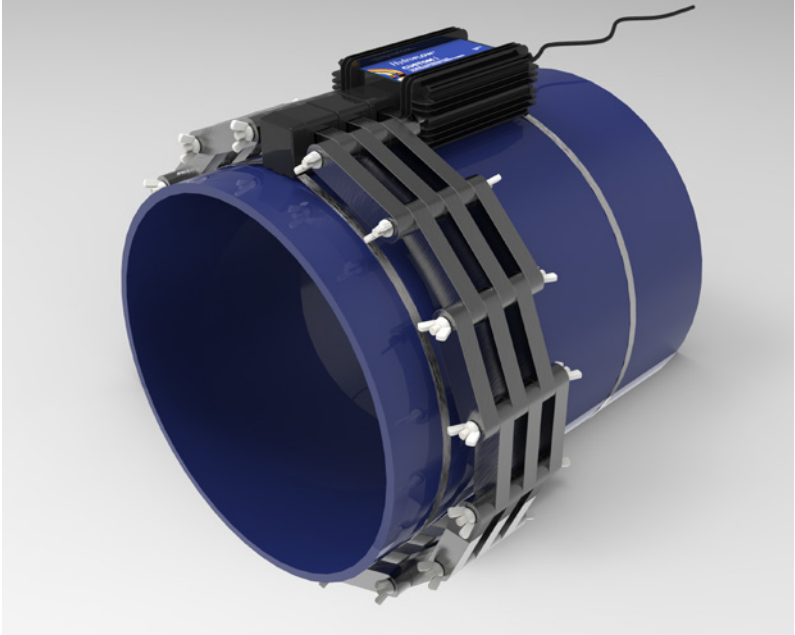
LIMESCALE



BIOFOULING



FLOCCULATION



## CUSTOM RANGE

 CUSTOM SIZES

Standard commercial units are available to fit pipes up to 200mm OD. However for a larger pipe size, HYDROPATH can design a unit specifically for your requirements

in any of our commercial ranges. Custom units are installed around the world in an array of challenging environments and applications including aquaculture, waste water treatment, the mining industry.

Whether it's a 10 inch unit for a cooling tower, or a unit for a power station meters in diameter, HYDROPATH can meet your needs.

- Water quality
- Limescale
- Versions corresponding to all commercial ranges
- Units available for pipes from 220mm to several meters in outside diameter

From the most challenging of industrial environments to the smallest household, HYDROPATH provides 24-hour protection for water systems all over the world.



*HydroFLOW*®



## FROM TEXAS TO TOKYO

**“One of the best long term measures for the reduction and prevention of the continual scale problem...within 48 hours of operation the water pressure and heating controls had significantly improved and within 7 days the shower unit performance had returned to near 95% of its original condition”**

Residential Housing Installation, UK

**“I have fought with hard water for years and have spent a lot of money on chemicals...this technology worked well beyond my expectations. I just saved \$300 in pool chemicals that I normally have to buy to get the pool adjusted correctly”**

Domestic Pool Installation, USA

**“The s38 treats the water via radio-frequency electric field. After 8 weeks we still don't have to clean this container. Without the s38 we had to clean it 26 times a year.. this has been reduced to six to seven times - a reduction of 75%”**

Printing Press Installation, Netherlands

**“Before the installation, the heat exchanger had to be cleaned every 15 days...since installing the HydroFLOW, the heat exchangers and valves have been free of scale and the water pressure is unchanged. No further chemical treatment was required”**

Paper Mill Installation, China

**“I have tested it in every possible way, by leaving water residue lying in the sink and leaving a dripping tap...the only thing remaining in the sink and tub was a thin smear which promptly wiped off with a dry cloth and left no mineral residue whatsoever”**

Caravan Site Installation, Australia

1. Office Tower, Hong Kong
2. Brewery, Ukraine
3. Hospital, Taiwan
4. Shopping Mall, Hungary
5. Power Station, Russia
6. Copper Mine, Chile
7. Municipal Pool, USA





## HYDROPATH TECHNOLOGY HQ

Unit C1, Crossgate Drive,  
Queens Drive Industrial Estate,  
Nottingham, NG2 1LW,  
United Kingdom.

T +44(0) 1159 869 966  
F +44(0) 1159 869 944  
E [sales@hydropath.com](mailto:sales@hydropath.com)  
W [www.hydropath.com](http://www.hydropath.com)

📍 [hydropath\\_tech](#)  
🐦 [@hydropathtech](#)  
🌐 [@hydropath](#)

## YOUR LOCAL CONTACT

