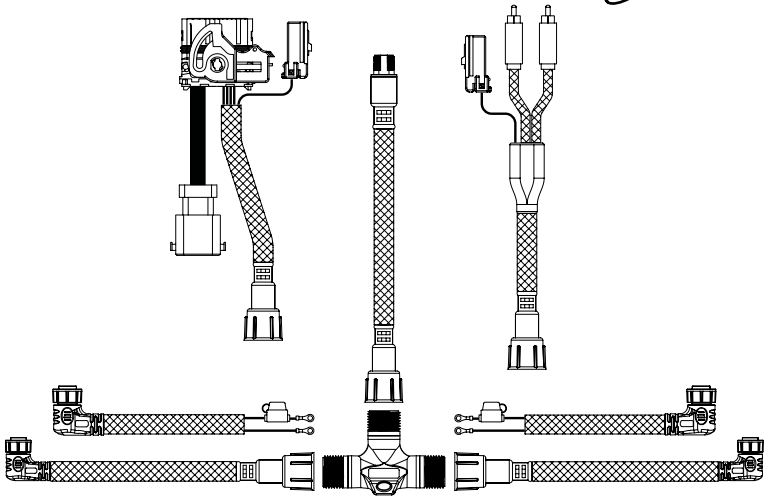
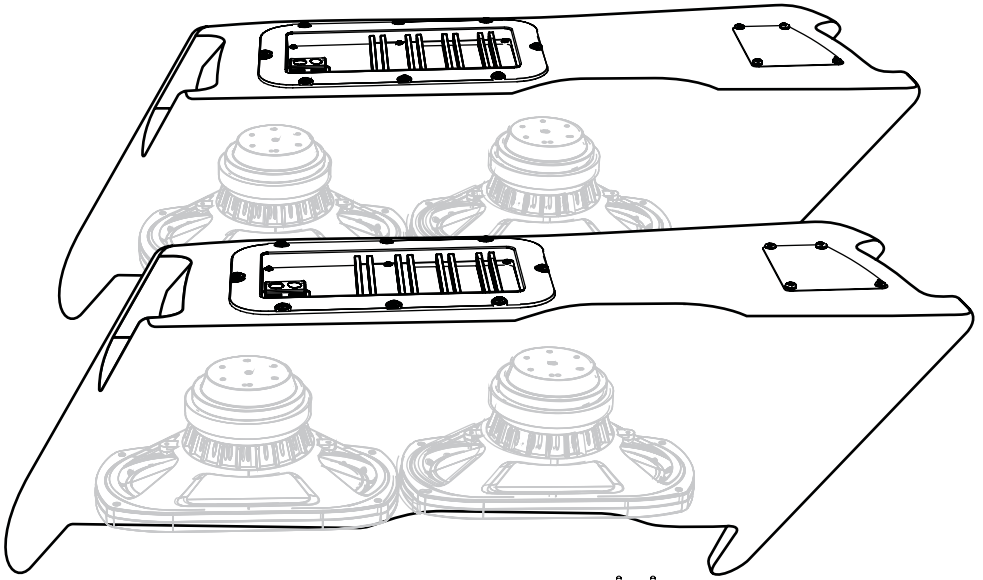


PrecisionPower®

Absolutely State of the Art Mobile Audio™

**POWERED SUBWOOFER FOR HARLEY-
DAVIDSON® TOURING MOTORCYCLES**



Preparing the Saddlebag

1. Remove the saddlebag lid(s) from the saddlebag(s) by first removing two T15 Torx screws that attach the soft hinge to the saddlebag. Then, remove two more T15 screws for the inner metal hinge. Set the saddlebag lid(s) aside.



2. Remove the saddlebag(s) and side cover(s) from the motorcycle and set on a convenient, protected working surface.

3. Turn each saddlebag over and set the clear plastic template over the bottom of the saddlebag. Using the provide 30mm drill bit, drill a hole thru the bottom of the saddlebag at each location indicated on the template.

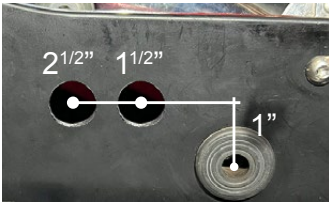
Tip: Pre-drill each hole location on the template with a small drill bit & trace each location onto the bottom of the saddlebag.



4. Install a hydrophobic vent into each hole. Install each vent so the hydrophobic fabric is outside of the saddlebag. Tighten the ring for each vent hand tight inside the saddlebag.



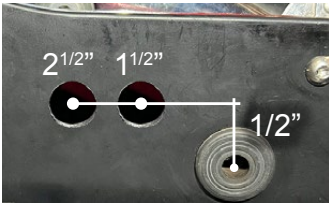
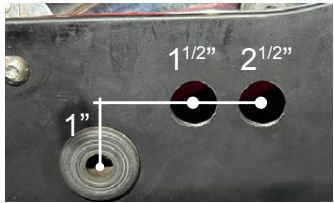
5. Measure out the amplifier cabling hole locations using the center of the saddlebag mounting hole as reference. Use the provided 16mm drill bit to drill the two holes thru the saddlebag.



1998-2013

clutch side

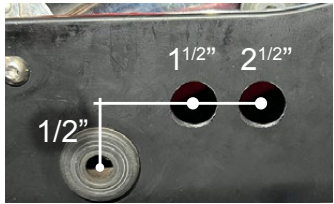
brake side



2014+

clutch side

brake side



Fairing Removal

2014+ Street Glide & Ultra Outer Fairing Removal

1. Remove three outer fairing bolts using a T27 Torx screw driver. The three outer fairing bolts are located below the windshield. Remove the windshield, store it and the screws removed in a safe place for re-installation later.



TIP: Reinstalling the center screw after removing the windshield will prevent the outer fairing from falling during the next step. A few turns by hand will be sufficient.

2. Remove four inner fairing bolts using a T27 Torx screw driver. The four inner fairing bolts are located adjacent to each turn indicator mounting bracket and below each speaker. Store these screws in a safe place for re-installation later.



3. While straddling the front wheel fender, grasp the outer fairing, remove the center outer fairing bolt from the previous step, then gently pull the fairing apart from the bike. With the fairing slightly pulled away from the bike, disconnect wire harness for the headlamp and any other accessories. Lay the fairing on a protected flat surface to prevent damage.

2014+ Road Glide Outer Fairing Removal

1. Remove four windshield bolts using a 1/8" hex driver or Phillips screw driver and remove the windshield. Also remove factory vent by pulling straight up on the vent. The vent comes snapped in place. Store the screws in a safe place for installation later.



2. After removing the vent, locate and unplug the 3-pin wire harness for the left and right side turn signal indicator. These harnesses are adjacent to each side of the head unit.



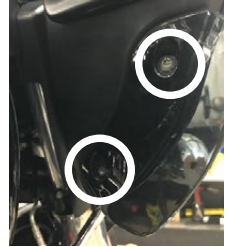
Fairing Removal

2014+ Road Glide Outer Fairing Removal (cont.)

3. Detach each turn signal / indicator light by removing the adjacent hex socket screw, using a 3/16" hex head driver. Store these screws in a safe place for re-installation later.



4. Remove four inner fairing bolts using a T25 Torx driver. Two inner fairing bolts are located below each glove box, adjacent to each wind deflector. Store these screws in a safe place for installation later.



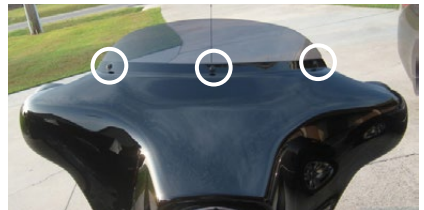
5. Remove an additional inner fairing bolt with a T27 Torx or 5/32" hex driver, one behind each speaker grill. Remove the speaker grill by wedging a plastic/nylon pry tool between the inner fairing and grill edge, popping it outward. Once these bolts are removed, the outer fairing will be detached from the inner fairing. Store these screws in a safe place for installation later.



6. While straddling the front wheel fender, grasp the outer fairing. Gently pull the fairing apart from the bike. With the fairing slightly pulled away from the bike, disconnect wire harness for the headlamp or any other accessories. Lay the fairing on a protected flat surface to prevent damage.

1998-2013 Street Glide & Ultra Outer Fairing Removal

1. Remove three outer fairing bolts using a T27 Torx screw driver. The three outer fairing bolts are located below the windshield. Remove the windshield, store it and the screws removed in a safe place for re-installation later.



TIP: Reinstalling the center screw after removing the windshield will prevent the outer fairing from falling during the next step. A few turns by hand will be sufficient.

Fairing Removal

1998-2013 Street Glide & Ultra Outer Fairing Removal (cont.)

2. Remove four inner fairing bolts using a T27 Torx screw driver. Two inner fairing bolts are located adjacent to each mirror. Two additional screws are adjacent to the forks. Store these screws in a safe place for re-installation later.



Tip: Note the length of each screw set at the mirror and fork locations.

3. While straddling the front wheel fender, grasp the outer fairing, remove the center outer fairing bolt from the previous step, then gently pull the fairing apart from the bike. With the fairing slightly pulled away from the bike, disconnect wire harness for the headlamp and any other accessories. Lay the fairing on a protected flat surface to prevent damage.

1998-2013 Road Glide Outer Fairing Removal

1. Remove each turn indicator by removing 2 bolts for each between the forks/handlebar & inner fairing wall. Use a 1/2" open-end/box-end wrench, ratcheting wrench, or short 1/2" socket and ratchet. The bolt might not unthread from the turn signal housing, however the acorn nut might instead. It will be easier to reinstall the indicator later if the bolt remains on the indicator housing. Set the bolts &/or acorn nuts aside and tuck the indicators aside.



2. Remove six inner fairing bolts using a T25 Torx screw driver. Two screws are adjacent to the fuel & battery voltage gauges. Two more are located at the outside corner of each speaker grill. The last two screws are below each storage compartment hinge. Store these screws in the storage compartments for re-installation later.

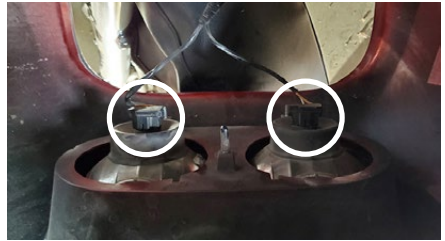


Tip: Note the length of each screw set for each section.

Fairing Removal

1998-2013 Road Glide Outer Fairing Removal (cont.)

3. While straddling the front wheel fender, grasp the outer fairing & gently pull it away from the inner fairing. With the fairing slightly pulled away from the bike, disconnect wire harness for the headlamp(s) and any other accessories. Lay the fairing on a protected flat surface to prevent damage.

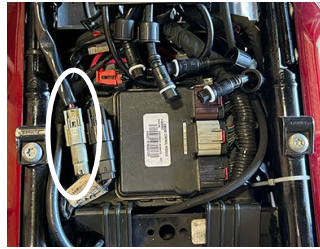


Fuel Tank & Seat Removal

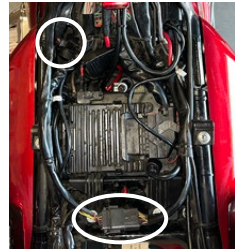
All Years, All Models

1. Remove the seat strap & seat screws with a phillips screw driver. Store the seat and the screws removed in a safe place for re-installation later.

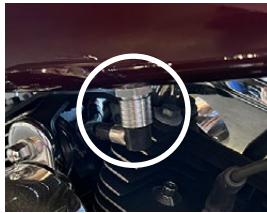
2. Disconnect the wire harness(s) from the gas tank, & pull the vent tubes out from behind the tank. Fold them aside.



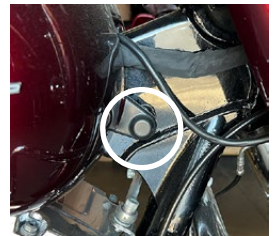
2014+



1998-2013



3. Disconnect the fuel line from the fuel tank by pressing up on the sleeve & gently pulling the line out.



4. Remove two tank mounting bolts near the forks using a 1/2" socket. One bolt is on each side of the tank under a rubber cover. Set the bolts & rubber cover aside for re-installation later.



5. Remove two additional two tank mounting bolts at the back of the tank using a 1/2" socket. Set the bolts aside for re-installation later.

6. Remove the gas tank by lifting up. Set it aside in a safe place for re-installation later.

Cable Routing

Power Cable Installation & Routing

1. Set aside the ECM tray by removing its two screws with a 1/2" socket. Additional harnesses/connectors that are attached to the tray may need to be removed to set the tray aside. Set the bolts aside for re-installation later.



2. Remove the power & ground cable bolt & cables from the battery with a 10mm socket. Set the bolts aside for re-installation later.

3. Route the power/ground cable from within the battery compartment to the back corner of the saddlebag, just in front of the rear latch screw hole. The end with ring terminals stays in the battery compartment. Use the supplied cable ties to loosely secure the power/ground wire to the frame or adjacent cables in the fairing. Be sure to avoid the belt and any other moving parts.



4. Add the amplifier's power cable ring terminal with all other power cable ring terminals & re-install them with the bolt removed in step two to the battery's positive post using a 10mm socket.

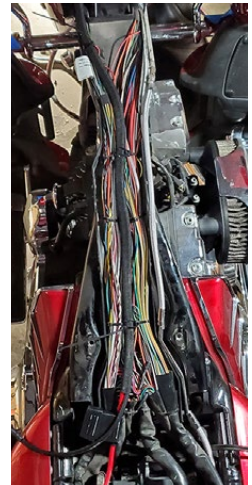
5. Add the amplifier's ground cable ring terminal with all other ground cable ring terminals & re-install them with the bolt removed in step two to the battery's negative post using a 10mm socket.

4. Reinstall the ECM tray removed in step 1.

Backbone Cable Routing

1. Remove the plastic cover over the wire chase by pressing in on the various holding tabs on either side using a flat head screw driver. Cut any wire/cable ties that may also be used. Set the wire chase cover aside for re-installation later.

2. Route the male threaded end of the backbone cable thru the wire chase and into the fairing to the head unit location. Route the female threaded end down the wire chase to the battery compartment. Use cable ties to secure the backbone cable in the fairing & wire chase. Re-install the wire chase cover by snapping it into the locking tabs on either side of the wire chase.



Re-install the wire chase cover by snapping it into the locking tabs on either side of the wire chase.

Cable Routing

Backbone Cable Routing (cont.)

3. Route a saddlebag cable from the back corner of the saddlebag just in front of the rear latch screw hole into the battery compartment. The 900 connector should remain at the fender. Be sure to avoid the belt and any other moving parts. Secure the cable to other cables and/or cable tie points along the wheel well/fender.



4. Connect the female threaded end of the backbone cable to the T-connector input. Then, attach a saddlebag cable to the corresponding Lch. or Rch. output of the T-connector. (*if installaing only one subwoofer, use the 90° angle connector instead of the T-connector*)

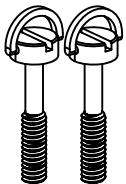
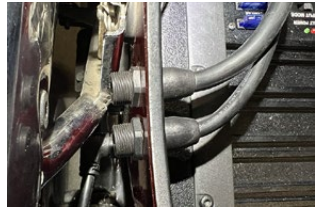


Subwoofer Installation & Cable Connections

1. Install the subwoofer enclosure into the saddlebag. Place the threaded end of the power/ground cable (4pin) & signal cables (5pin) from the subwoofer amplifier into the holes drilled into the side of the saddlebag. Secure each with it's plastic threaded nut.



TIP: *The saddlebag lid latches may need to be removed for initial installation of the saddlebag enclosure(s).*



2. Reinstall the saddlebag with enclosure onto the motorcycle, only hand tight. *For model year 2017 and newer motorcycles, the saddlebag lever-mounts will not be used. Use the provided threaded D-ring studs to secure the saddlebag to the motorcycle.*

3. Thread the saddlebag cable from the battery compartment onto the threaded end connector on the saddlebag. Thread the power/ground cable from the battery compartment onto the threaded end connector on the saddlebag. The connectors are keyed, so be sure to properly align them together.



TIP: *Loosten the saddlebag and tilt it away from the fender to secure the cable connectors. Reattach the saddlebag to the fender after each connector is secure.*

Head Unit Connections

OEM Head Unit

1. Disconnect the wire harness from the head unit by pressing in on the locking lever catch pin, then slide the lever open to unlock the connector from the head unit.
2. Using the included OEM T-harness, insert the male connector removed from the head unit into the female connector of the OEM T-harness. Slide the locking level of the OEM male connector over until the catch pins lock the two connectors together.
3. Insert the male connector of the OEM T-harness into the female connector of the head unit. Slide the locking level of the male connector over until the catch pin locks onto the female connector of the head unit.
4. Connect the blue turn-on wire to an available female P&A connector in the fairing. If only male connectors are available in the fairing, use the included female-female adapter.
5. Attach the female threaded end of the OEM T-harness to the male threaded end of the backbone cable previously installed. The connectors are keyed, so be sure to properly align them together.

Aftermarket Head Unit with RCA

1. Using the included aftermarket RCA adapter cable, connect the white male RCA to the left subwoofer channel output of the head unit. Connect the red male RCA to the right subwoofer channel output.
2. Connect the blue turn-on wire to an available female P&A connector in the fairing. If only male connectors are available in the fairing, use the included female-female adapter.
3. Attach the female threaded end of the OEM T-harness to the male threaded end of the backbone cable previously installed. The connectors are keyed, so be sure to properly align them together.

Initial Power-up

Turn the ignition on to turn on the head unit. Verify the subwoofer amplifier are turning on and music is playing. If the amplifiers are not turning on or playing music, verify all connections are complete before proceeding to the next steps.

Fairing Installation

2014+ Street Glide & Ultra Outer Fairing Installation

1. While holding the outer fairing & straddling the front wheel fender, reconnect the wire harnesses for the headlight and any other accessories previously disconnected.
2. Hold the outer fairing together to the inner fairing and install the center windshield bolt hand tight. Tuck away any loosely hanging cables inside the fairing.
3. Reinstall the 4 inner fairing bolts using a T27 Torx screw driver. The four inner fairing bolts are located adjacent to each turn indicator mounting bracket and below each speaker. The longer bolt goes below the speaker, the shorter bolt goes adjacent to the turn indicator mounting bracket.



4. Remove the center windshield bolt and reinstall the windshield. Secure the windshield to the inner fairing by installing the three bolts previously removed using a T27 Torx screw driver.



2014+ Road Glide Outer Fairing Installation

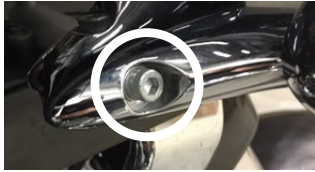
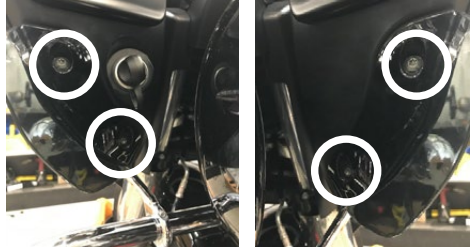
1. While holding the outer fairing & straddling the front wheel fender, reconnect the wire harnesses for the headlight and any other accessories previously disconnected.
2. Realign the outer fairing to the inner fairing and attach them together using the 5/32" hex screws removed at the speaker location. Tuck away any loosely hanging cables inside the fairing. Set the grills aside and reinstall them after the final step.



Fairing Installation

2014+ Road Glide Outer Fairing Installation (cont.)

3. Reinstall the four inner fairing bolts using a T25 Torx driver. Two inner fairing bolts are located below each glove box, adjacent to each wind deflector.



4. Reinstall each turn signal / indicator light using the 3/16" hex socket screws previously removed.

5. Reconnect the 3-pin wire harnesses for the left and right side turn signal indicator. These harnesses are on either side of the head unit.



6. Reinstall the air vent into place and reattach the windshield to the fairing using the 1/8" hex or phillips screws previously removed.

7. If all screws are tight and the fairing is secure, reinstall the speaker grills.

1998-2013 Street Glide & Ultra Outer Fairing Installation

1. While holding the outer fairing & straddling the front wheel fender, reconnect the wire harnesses for the headlight and any other accessories previously disconnected.

2. Hold the outer fairing together to the inner fairing and install the center windshield bolt hand tight. Tuck away any loosely hanging cables inside the fairing.

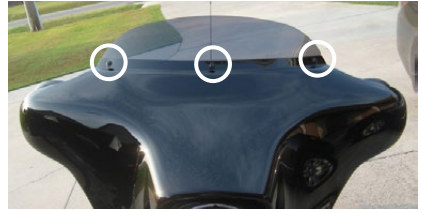
3. Reinstall four inner fairing bolts using a T27 Torx screw driver. Two inner fairing bolts are located adjacent to each mirror. Two additional screws are adjacent to the forks.



Fairing Installation

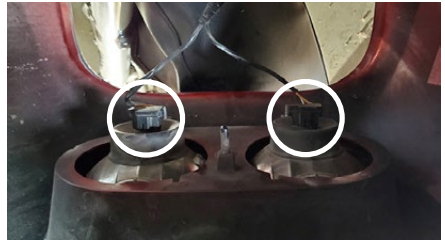
1998-2013 Street Glide & Ultra Outer Fairing Installation (cont.)

4. Remove the center windshield bolt and reinsert the windshield. Secure the windshield to the inner fairing by installing the three bolts previously removed using a T27 Torx screw driver.



1998-2013 Road Glide Outer Fairing Installation

1. While holding the outer fairing & straddling the front wheel fender, reconnect the wire harnesses for the headlight and any other accessories previously disconnected.



2. While holding the outer fairing together to the inner fairing, reinstall the six T27 Torx screws to hold the outer fairing to the inner fairing. Two screws are adjacent to the fuel & battery voltage gauges. Two more are located at the outside corner of each speaker grill. The last two screws are below each storage compartment hinge. Tuck away any loosely hanging cables inside the fairing.



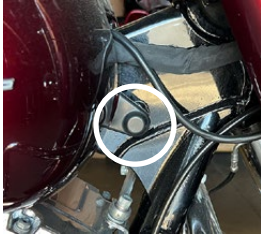
3. Reinstall each turn indicator with the two bolts previously removed between the forks/handlebar & inner fairing wall. Use a 1/2" open-end/box-end wrench, ratcheting wrench, or short 1/2" socket and ratchet.



Fuel Tank & Seat Installation

All Years. All Models

1. Reinstall the gas tank and secure it to the frame using the two 1/2" mounting bolts at the back of the tank.

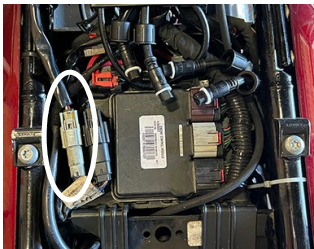


2. Reinstall two 1/2" mounting bolts at the front of the gas tank, near the forks. One bolt is on each side of the tank.



3. Reconnect the fuel line from the fuel tank by pressing up on the collar & gently inserting the line. Pull the collar back down after inserting the fuel line. Verify no fuel is leaking before proceeding.

4. Reconnect the gas tank wire harnesses previously disconnected and tuck the vent tubes between the tank and battery compartment.



2014+



1998-2013

5. Reinstall the seat and seat strap with the phillips screws previously removed.