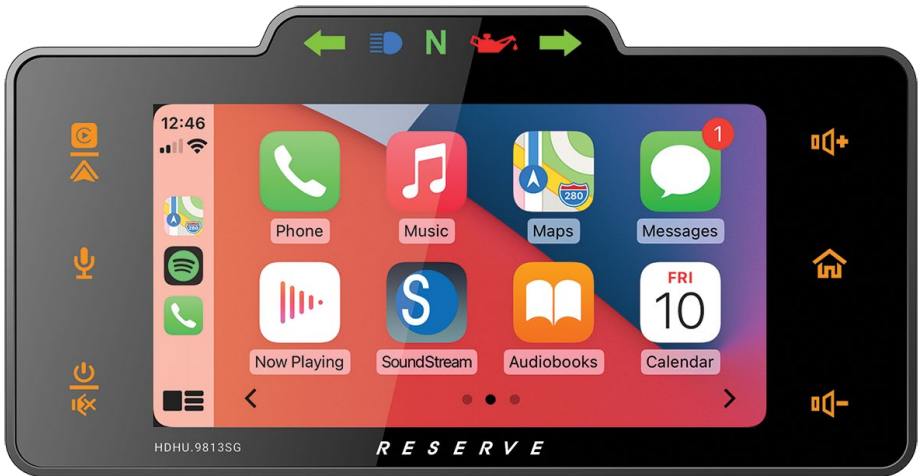


RESERVE

by SOUNDSTREAM®

**DEM UPGRADE HEAD UNIT FOR
'98-'13 HARLEY-DAVIDSON® ELECTRA GLIDE®,
ULTRA®, & STREET GLIDE® MOTORCYCLES**

INSTALLATION GUIDE



androidauto

Works with
Apple CarPlay

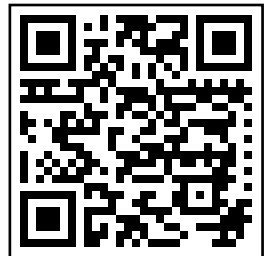
SiriusXM
READY

PLUG-n-PLAY
INSTALLATION

**To print a complete owners manual, visit us
online at motorcycleaudio.com/hdhu9813SG**

- or -

**scan this QR code with your phone's
camera to download the complete
owners manual to your phone.**



Removal of the Fairing & Original Head Unit

To prevent accidental vehicle start-up, which could cause death or serious injury, remove main fuse before proceeding.

1. Remove four fairing screws holding the outer fairing to the inner fairing using a T27 Torx driver. The first two screws are located under the fairing adjacent to each fork:



Tip: Turn the handlebar for better access to the screws.

The second pair of screws are below/adjacent to each speaker:



2. Remove three screws that attach the windshield & outer fairing to the inner fairing using a T27 Torx driver. Remove the windshield & set aside. Reinstall the center screw by hand to hold the outer fairing in place. Set remaining screws aside for installation later.

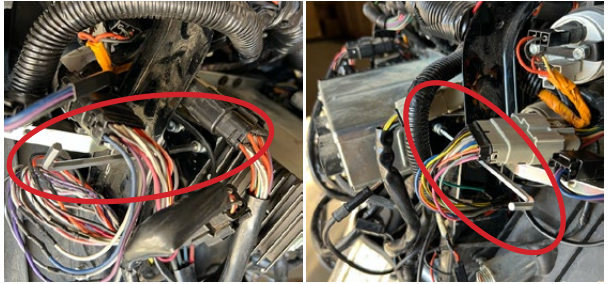
3. While straddling the front wheel fender, grasp the outer fairing. Remove the center windshield screw. Gently pull the fairing apart from the bike. With the fairing slightly pulled away from the bike, disconnect wire harness for the headlight or any other accessories. Lay the fairing on a protected flat surface to prevent damage.



4. Disconnect all wire harnesses from the OEM radio. Use a pry tool, flat-head screwdriver, or pick tool to lift up on the locking tab, then pull the male connector(s) out from the female connector(s). Also, unplug the FM antenna & disconnect the CB antenna (if equipped). If the OEM SiriusXM tuner is installed, disconnect & remove its antenna, it will not be used.

Removal of the Fairing & Original Head Unit (cont.)

5. Remove the OEM head unit by removing 4 screws from the head unit support bracket. Use a 3/16" hex/allen key tool to remove 2 screws from each side. An access hole in the fairing support brackets accommodates a hex/allen tool. Set these four screws aside for reinstallation.



6. Gently pull the OEM radio out and up, away from the support bracket. No other parts from the OEM radio are needed.

7. Take a moment to clean the surfaces of the inner fairing surrounding the cutout for the radio & around the rectangle recess using a damp micro-fiber cloth. Any debris or residue left on these surfaces can affect the water-tight seal around HDHU.9813SG.

Installation of HDHU.9813SG Head Unit

1. The ignition switch needs to be removed for initial installation. Turn the handlebars to the far left, then turn the ignition switch counterclockwise to FORK LOCK.

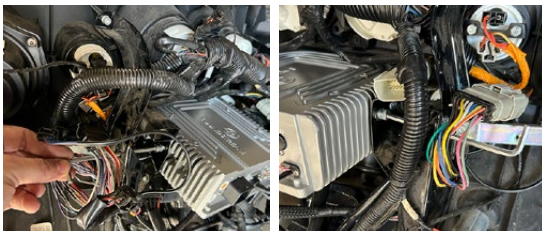
2. Insert the key & press the unlock pin under the switch, on the left side. While pressing the unlock pin under the switch, turn the key counterclockwise slightly beyond the UNLOCK position.



3. The ignition switch should be free. Remove the ignition switch with spring and set aside.



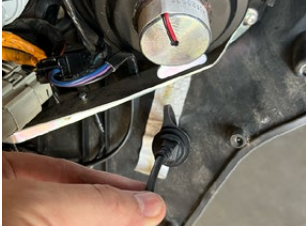
4. Route the USB cable, antenna extension, & RCA camera input w/ trigger into the cutout of the inner fairing. Pull the chassis of HDHU.9813SG thru the rectangular recess, aligning the mounting screw holes with the holes of the fairing support bracket.



5. Secure HDHU.9813SG to the radio support bracket with the 4 screws set aside during removal of the original head unit (step 5) using the same hex/allen key tool.

Installation of HDHU.9813SG Head Unit (cont.)

6. Insert and lock the male OEM head unit wire harness connector(s) to the female socket(s) of the included wire harness. Then, insert and lock the male connector of the included wire harness into the corresponding female socket on the back of HDHU.9813SG. Swivel the latch into place, locking the male connector into the female receptacle.

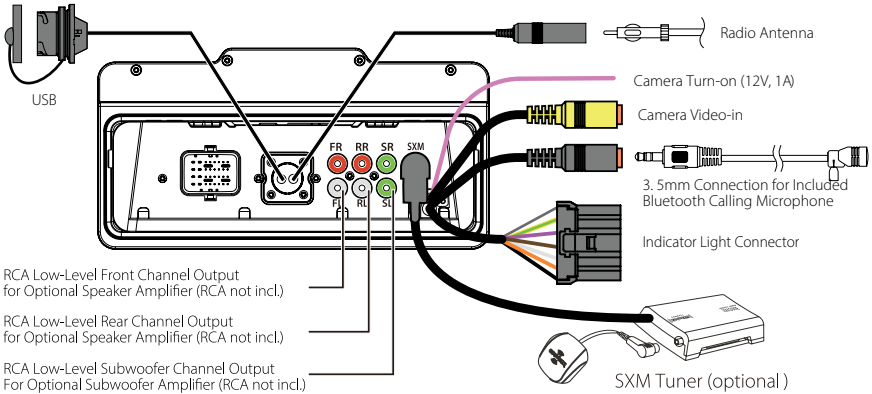


7. Identify the location you wish to have the CarPlay/Android Auto USB connector. Drill a hole at the location using a 13/16" or 7/8" spade bit or step bit. Route the USB cable from the head unit to the USB location.

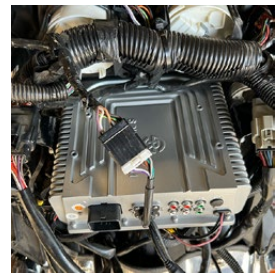


8. Remove the USB port cap, unthread the plastic nut and remove the gasket for the USB port cap. Be sure the secondary gasket ring remains. Insert the threaded end of the USB port thru the hole drilled during the previous step. Slip the gasket ring of the USB port cap over the threaded USB port. Thread the plastic nut down the USB port to secure it to the fairing surface. Finally, reattach the USB port cap.

9. Connect the FM radio antenna to the female receptacle extension, and any accessory added to this installation; SiriusXM tuner, Bluetooth calling microphone, camera video-in & trigger, amplifier audio RCA's etc. The wire harness of HDHU.9813SG also includes a blue remote turn-on wire for amplifier(s).



10. Disconnect the indicator lamp wire harness, located between the speedometer and tachometer. Connect the female OEM connector to the corresponding male connector of HDHU.9813SG. Tuck away the unused portion of the OEM indicator lamp cable and excess cable.



Installation of HDHU.9813SG Head Unit (cont.)

11. Reinstall the ignition switch pointing towards FORK LOCK with the key inserted and turned to the position beyond UNLOCK. Turn the key back to the UNLOCK position. a click sound should be heard, confirming the ignition switch has been installed correctly. If the switch is loose and comes out, repeat this step.



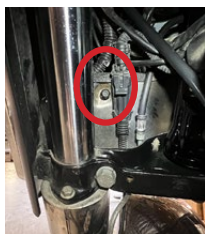
12. Take a moment to reinstall the main fuse if it was removed. At this point, HDHU.9813SG should turn-on when the ignition switch is in the IGNITION position. Verify all speakers are playing and the head unit is functioning. If successful, tie any loosely hanging cable/wires that might impede reinstallation of the fairing.

Reinstallation of the Fairing

1. While straddling the front wheel fender and holding the outer fairing, reconnect the wire harness for the headlight or any other accessories. Hold the outer fairing against the inner fairing and loosely thread the three windshield screws hand tight using a T27 Torx driver.



2. Tuck away any loosely hanging cables/wires and loosely secure the 4 inner fairing screws using a Torx T27 driver. The first two screws are located under the fairing adjacent to each fork:



Tip: Turn the handlebar for better access to the screws.

The second pair of screws are below/adjacent to each speaker:



3. Remove the three windshield screws and insert the windshield into place between the inner and outer fairing. Thread the windshield screws thru the outer fairing & windshield into the inner fairing.

4. Finally, tighten all the screws into place.

LIMITED 90-DAY CONSUMER WARRANTY
LIMITED TWO-YEAR CONSUMER WARRANTY WITH PURCHASE AND INSTALLATION BY A
SOUNDSTREAM OR PRECISIONPOWER AUTHORIZED SELLER

Soundstream promises to the original purchaser, to repair or replace this product with a new or refurbished unit (at Soundstream's sole and absolute discretion) should it prove to be defective in workmanship or material under normal use, for a period of *two-years from the date of purchase from the Soundstream or PrecisionPower authorized seller, PROVIDED the product was purchased and installed by a Soundstream or PrecisionPower authorized seller. During this *two-year period, there will be no charge for product repair or replacement, PROVIDED the unit is returned to Soundstream, return shipping pre-paid, along with the required proof of installation, the bill of sale or other dated proof of purchase, and the consumer's contact information.

If the unit is installed by anyone other than a Soundstream or PrecisionPower authorized seller, the warranty period will be 90-days from the date of purchase. This warranty is non-transferable and does not apply to any unit that has been modified or used in a manner contrary to its intended purpose, and does not cover damage to the unit caused by installation or removal of the unit. During this 90-day period, there will be no charge for the repair or replacement PROVIDED the unit is returned to Soundstream, return shipping prepaid, along with the bill of sale or other dated proof of purchase and the consumer's contact information.

This warranty is void if the product has been damaged by accident or unreasonable use, neglect, improper service or other causes not arising out of defects in materials or construction. This warranty does not cover the elimination of externally generated static or noise, or the correction of antenna problems or weak reception, damage to speakers, accessories, electrical systems, cosmetic damage or damage due to negligence, misuse, failure to follow operating instructions, accidental spills or customer applied cleaners, damage due to environmental causes such as floods, airborne fallout, chemicals, salt, hail, lightning or extreme temperatures, damage due to accidents, road hazards, fire, theft, loss or vandalism, damage due to improper connection to equipment of another manufacturer, modification of existing equipment, or Product which has been opened or tampered for any reason. Units which are found to be damaged by abuse resulting in thermally damaged voice coils are not covered by this warranty but may be replaced at the absolute and sole discretion of Soundstream. Unit must be returned to Soundstream, postage pre-paid, with bill of sale or other dated proof of purchase bearing the following information: consumer's name, telephone number, and address, authorized dealer's name and address, and product description. Please contact Soundstream warranty office at 800-724-1377 or repairs@soundstream.com to obtain a Return Authorization number prior to shipping the product.

Note: This warranty does not cover labor costs for the removal and reinstallation of the unit. IN ORDER FOR THE TWO-YEAR WARRANTY TO BE VALID, YOUR UNIT MUST BE SHIPPED WITH PROOF OF INSTALLATION BY A SOUNDSTREAM OR PRECISIONPOWER AUTHORIZED SELLER. ALL UNITS RECEIVED BY SOUNDSTREAM FOR WARRANTY REPAIR WITHOUT PROOF OF SOUNDSTREAM OR PRECISIONPOWER AUTHORIZED DEALER INSTALLATION AND PURCHASE WILL BE COVERED BY THE LIMITED 90-DAY WARRANTY.

BY PURCHASING THIS PRODUCT, ALL WARRANTIES INCLUDING BUT NOT LIMITED TO EXPRESS WARRANTY, IMPLIED WARRANTY, WARRANTY OF MERCHANTABILITY, FITNESS FOR PARTICULAR PURPOSE, AND WARRANTY OF NON-INFRINGEMENT OF INTELLECTUAL PROPERTY ARE EXPRESSLY EXCLUDED TO THE MAXIMUM EXTENT ALLOWED BY LAW, AND SOUNDSTREAM NEITHER ASSUMES NOR AUTHORIZES ANY PERSON TO ASSUME FOR IT ANY LIABILITY IN CONNECTION WITH THE SALE OF THE PRODUCT. SOUNDSTREAM HAS ABSOLUTELY NO LIABILITY FOR ANY AND ALL ACTS OF THIRD PARTIES INCLUDING ITS AUTHORIZED DEALERS OR INSTALLERS. BY PURCHASING THIS PRODUCT, THE CONSUMER AGREES AND CONSENTS THAT ALL DISPUTES BETWEEN THE CONSUMER AND SOUNDSTREAM SHALL BE RESOLVED IN ACCORDANCE WITH CALIFORNIA LAWS IN LOS ANGELES COUNTY, CALIFORNIA. Some states do not allow limitation on how long an implied warranty lasts. In such states, the limitation or exclusions of this Limited Warranty may not apply. Some states do not allow the exclusion or limitation of incidental or consequential damages. In such states, the exclusion or limitation of this Limited Warranty may not apply to you. This Limited Warranty gives you specific legal rights, and you may have other rights which vary from state to state.

THIS PAGE INTENTIONALLY LEFT BLANK

THIS PAGE INTENTIONALLY LEFT BLANK